



# Uniden D1685 front panel and keypad replacement

If you have a stuck button or the keypad is not working, this step-by-step guide will show how to access and clean keypad buttons to address the problem.

Written By: William Mullens



---

# INTRODUCTION

Outline what you are going to teach someone how to do.



## TOOLS:

- [Mako Driver Kit - 64 Precision Bits](#) (1)
  - [iFixit Opening Tools](#) (1)
-

## Step 1 — Front Panel and Keypad



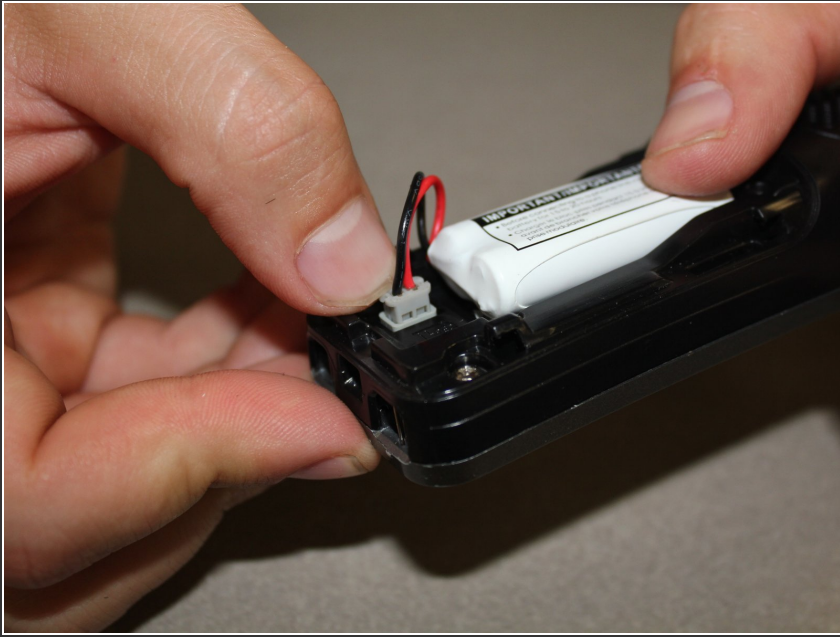
- Turn the phone over with the back facing upwards.

## Step 2



- Press your thumb down on the top of the cover and push downwards.

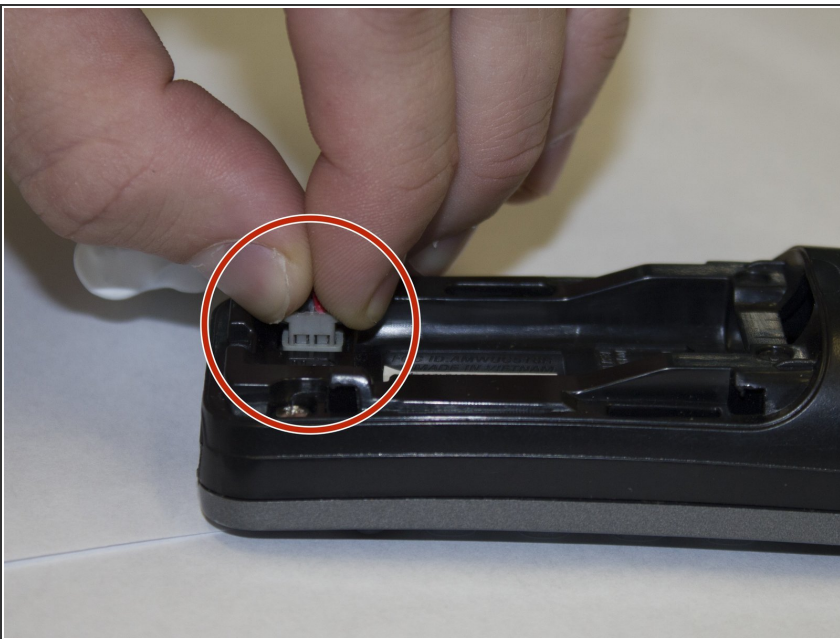
### Step 3



- Once removed the battery will be connected by 2 wires.

⚠ Do not pull the red and black wires.

### Step 4



- Pull the small, grey connector that is connected to the phone to disconnect the battery pack.



## Step 5



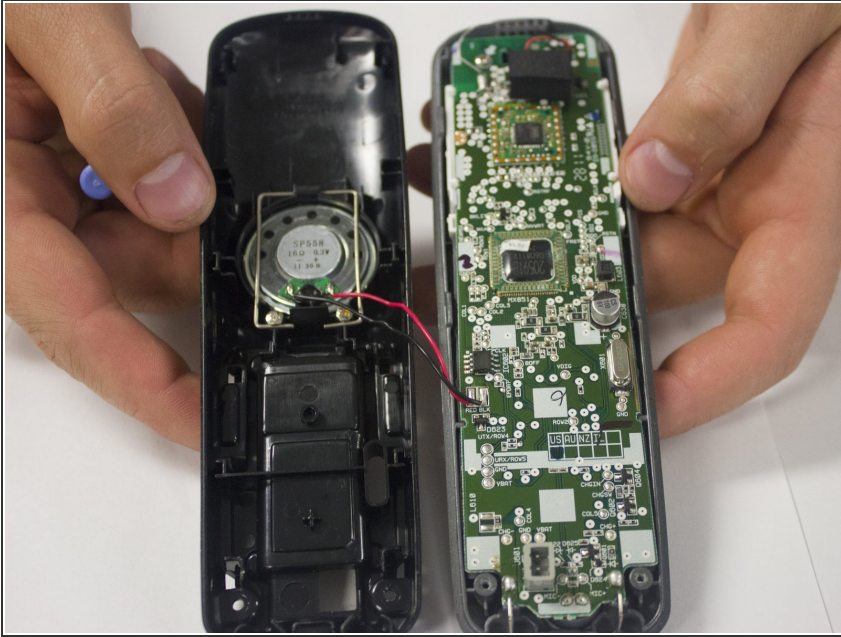
- Remove the two 3.175 mm screws with the small Phillips head (PH1) screwdriver on the bottom of the phone next to where the battery was removed.

## Step 6



- Once removed, use plastic opening tool to pull the back and front apart in 3 different locations; the bottom and both sides.

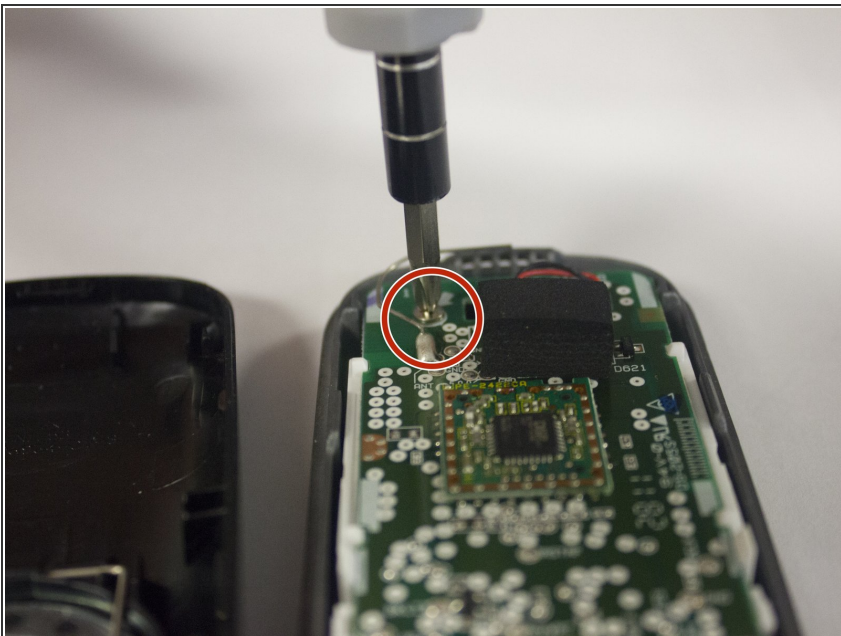
## Step 7



- After splitting the phone there will be 2 wires that connect the phone's circuit board with the speaker on the back.

⚠ Do not pull the red and black wires.

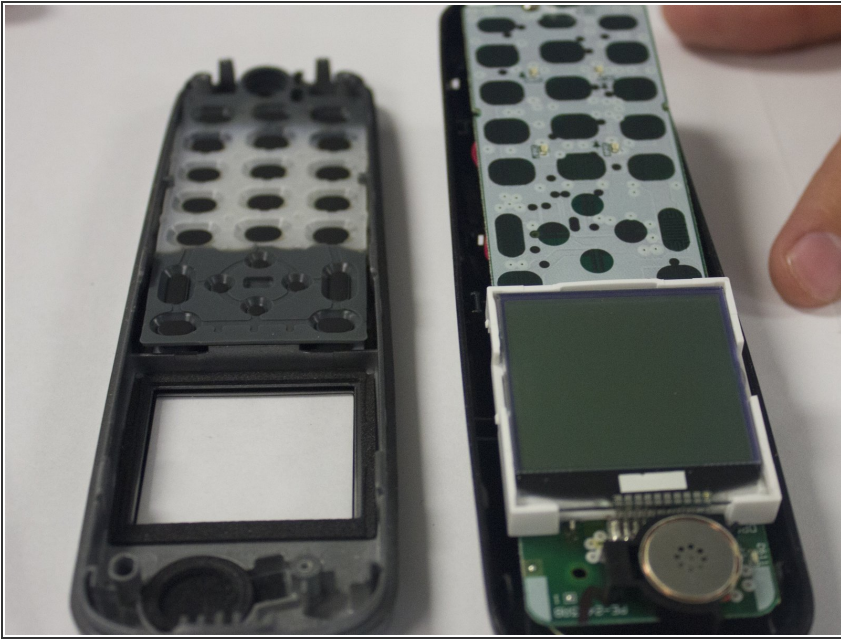
## Step 8



- The circuit board (Large Green) is attached by 1 3.175mm screw in the top, left corner.
- Remove this screw using a small Phillips head screwdriver (PH!) from the iFixit toolkit.

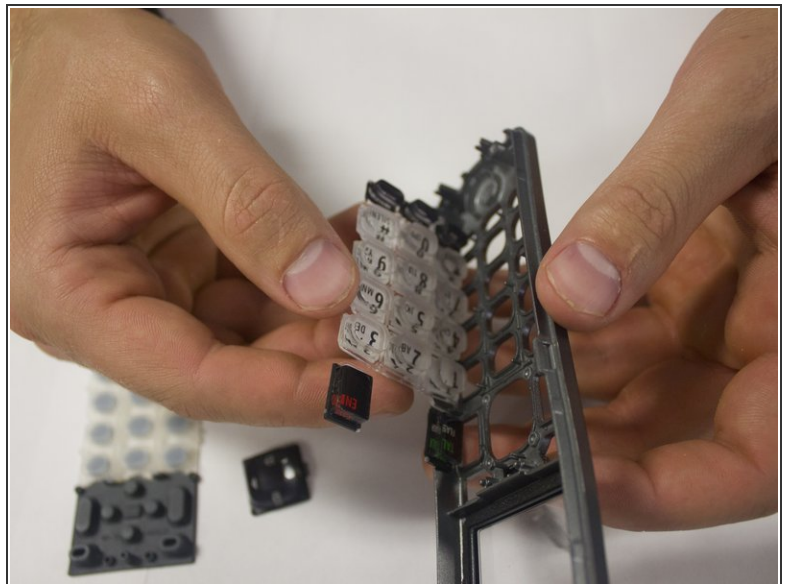
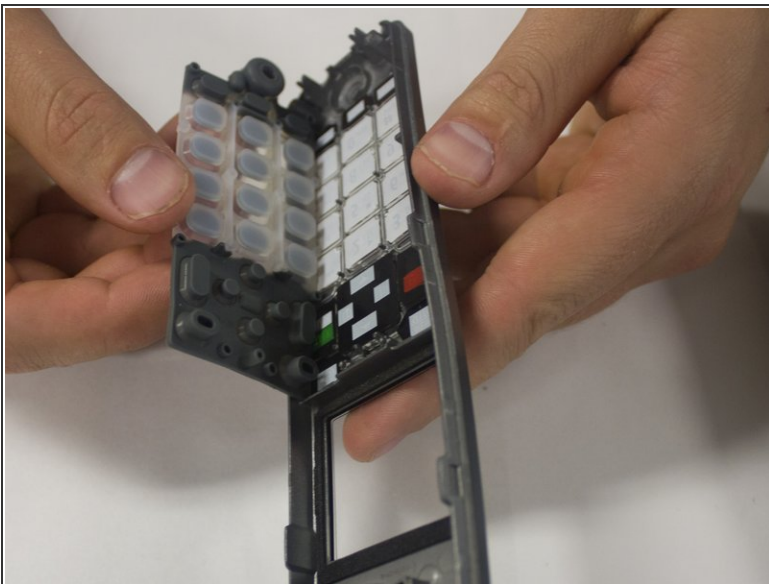


## Step 9



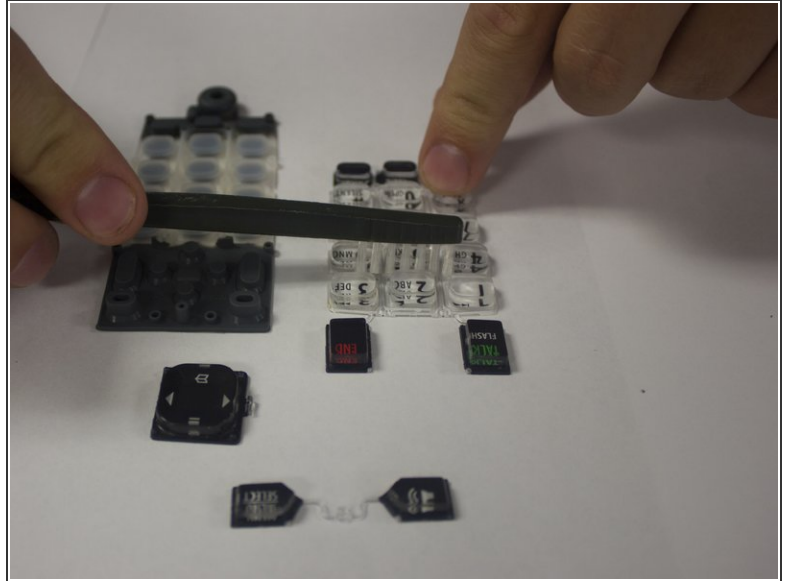
- Once the screw has been removed, the circuit board will be removable.
- Gently remove the circuit board and place it on the back of the phone.

## Step 10



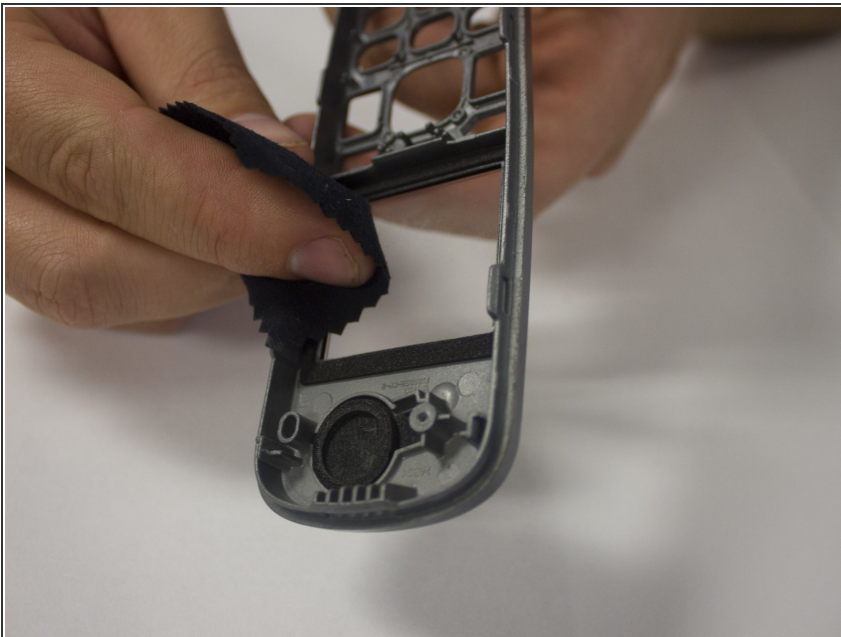
- The keyboard will now be accessible. Remove the Bumper Pad (rubber pad behind actual keypad).
- Remove the keypad.

## Step 11



- Clean the pad with cleaning spray and/or a brush.

## Step 12



- Once cleaned, make sure to dry off all of the components entirely.

To reassemble your device, follow these instructions in reverse order.