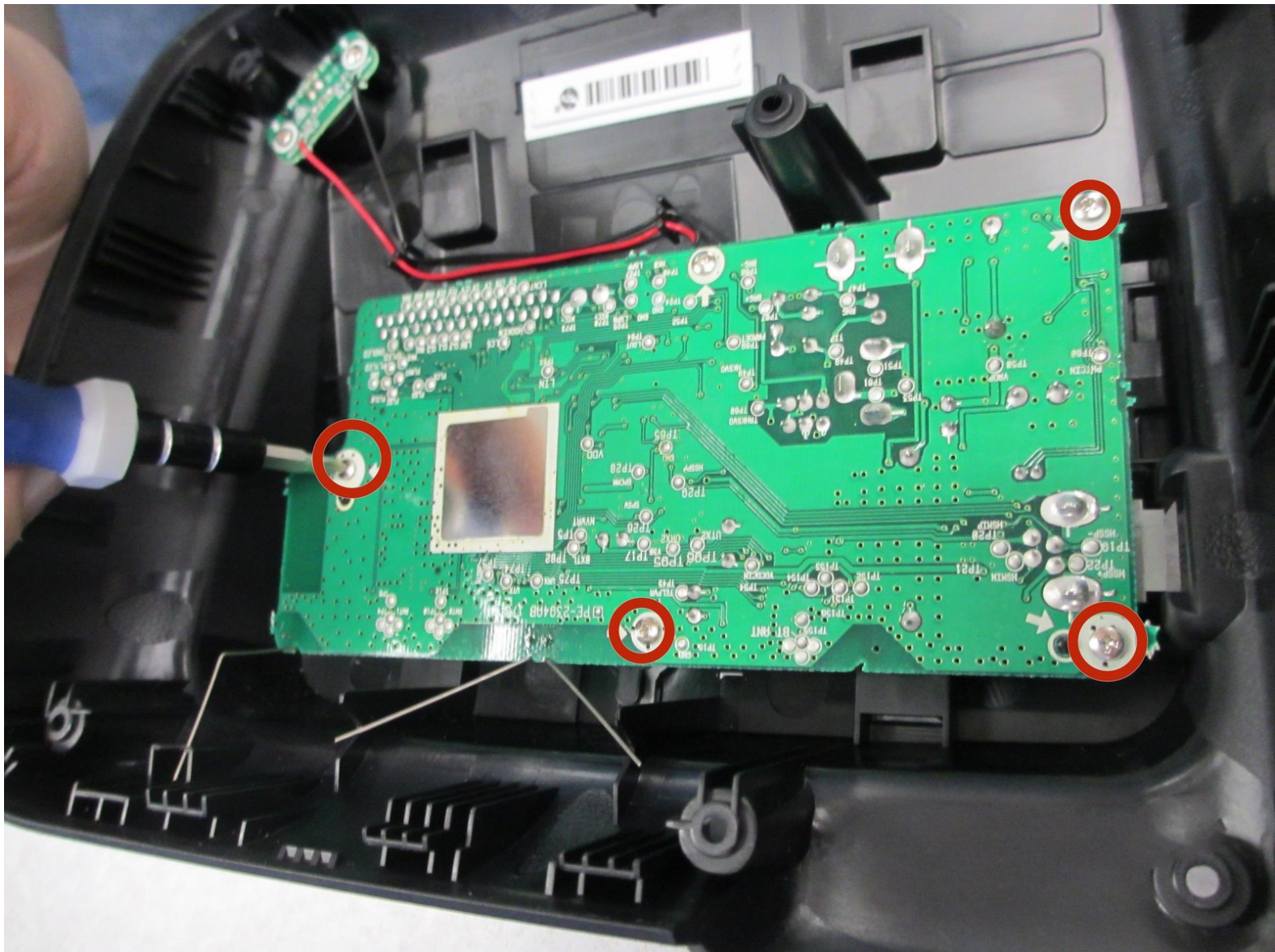




Uniden D1688 Bottom Circuit Board Replacement

Detailed summary of how to remove bottom shell circuit board.

Written By: justin



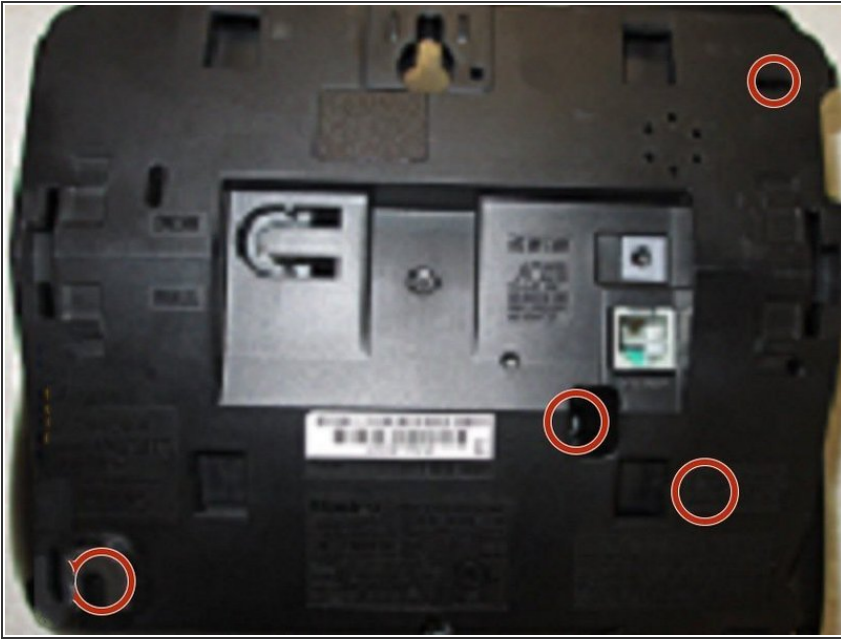
INTRODUCTION

We are going to teach you how to remove bottom shell circuit board. By removing this, you will learn how to disassemble the speaker.

TOOLS:

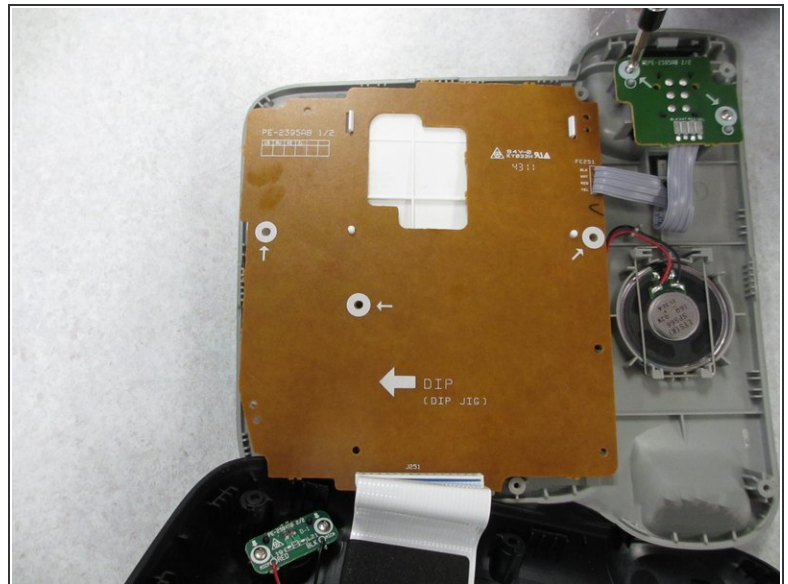
- [Spudger](#) (1)
 - [Phillips #1 Screwdriver](#) (1)
-

Step 1 — Uniden D1688 Base Replacement



- Unplug the phone from the base by detaching the RJ-11 plug.
- Flip the base upside down, and use the Phillips #01 screwdriver to unscrew the seven screws (Head size: 5.11mm, length: 8.6mm) on the underside of the base.

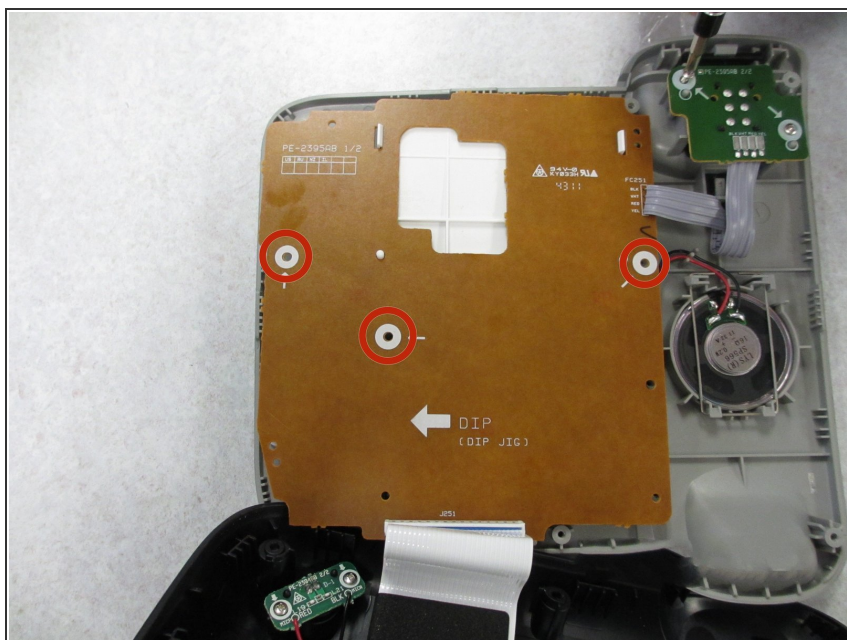
Step 2



- Using the spudger, separate the top shell of the base from the bottom shell from the base.
- ⚠ Use care when separating the base so the ribbon cable between the top shell circuit board and the bottom shell circuit board is not damaged!
- Lift the top shell off the bottom, and you have successfully opened the phone base.

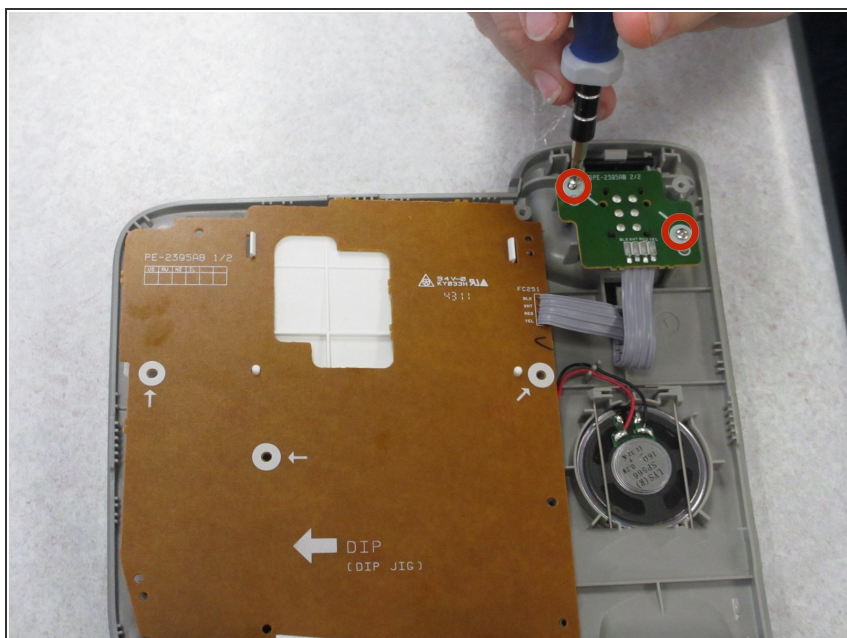
This document was generated on 2019-09-25 08:50:24 AM (MST).

Step 3 — Top Circuit Board



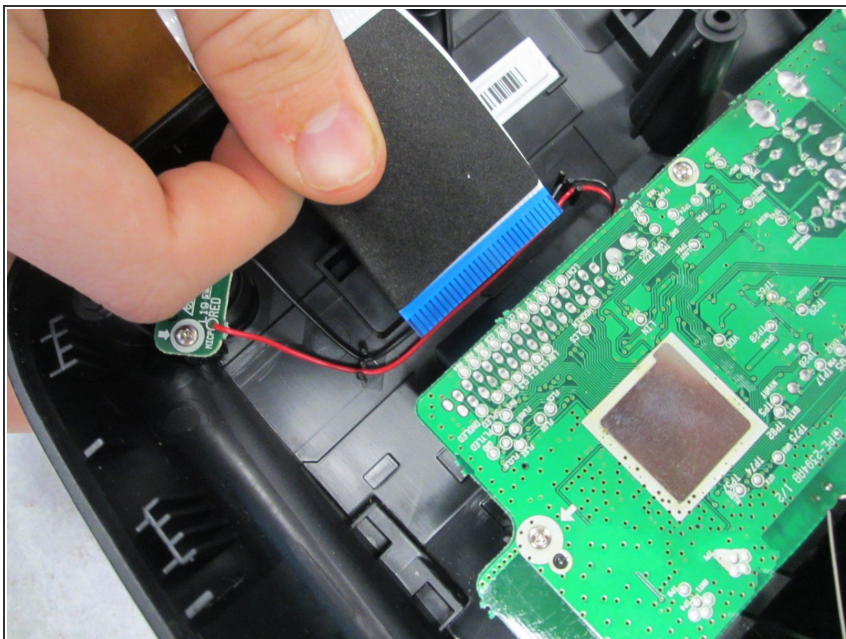
- Unscrew the 3 screws(Head Size: 4mm Length: 8.6 mm) from the top shell circuit board.

Step 4



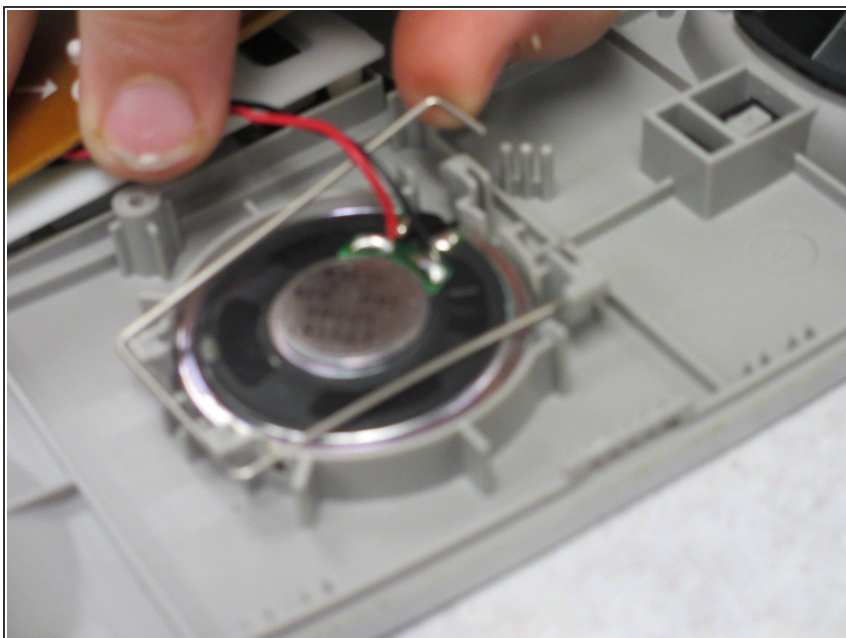
- Unscrew the 2 screws (Head Size: 4mm Length: 8.66) on the small circuit board in the top shell.

Step 5



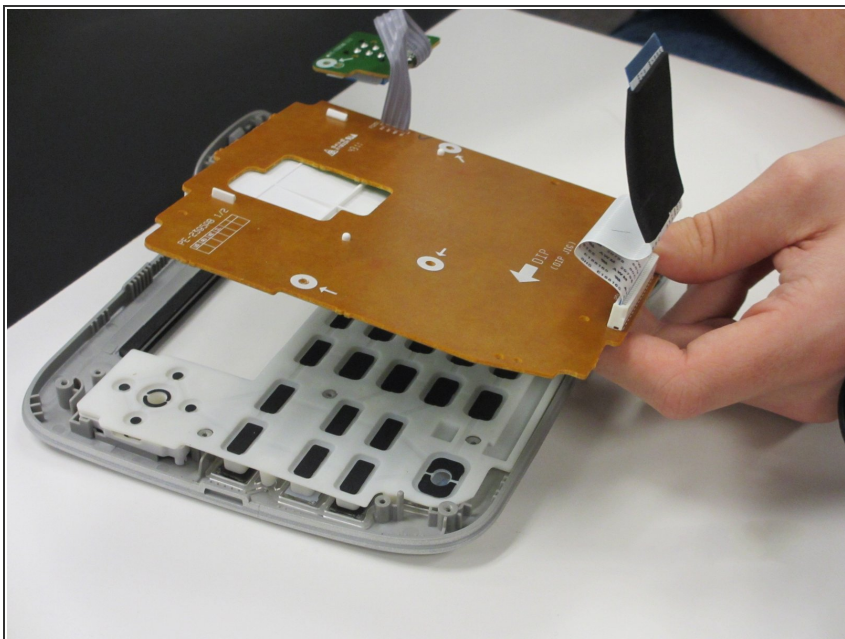
- Disconnect the ribbon cable from the bottom shell circuit board.

Step 6



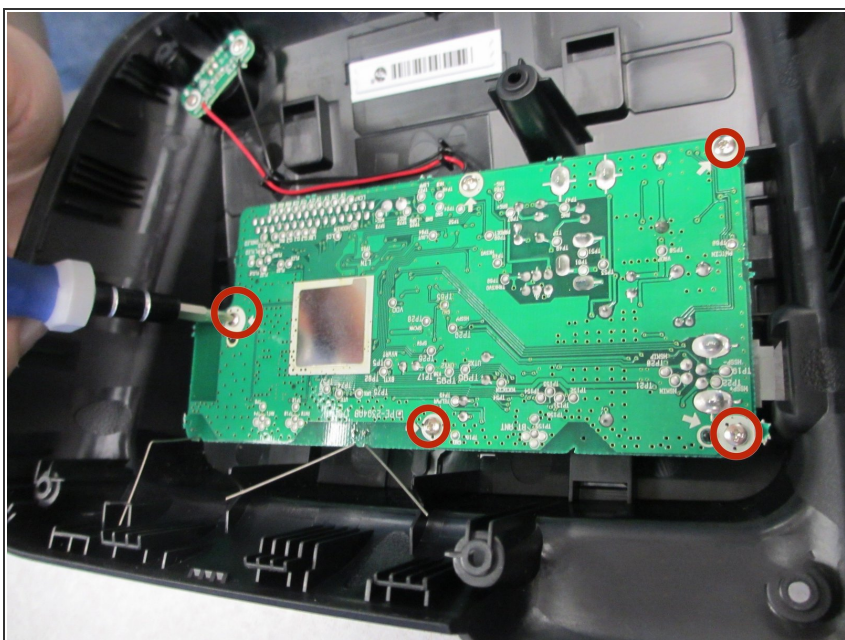
- Release the speaker from the locking pin by pushing down on each ending side of the pin and pushing it away from the speaker.

Step 7



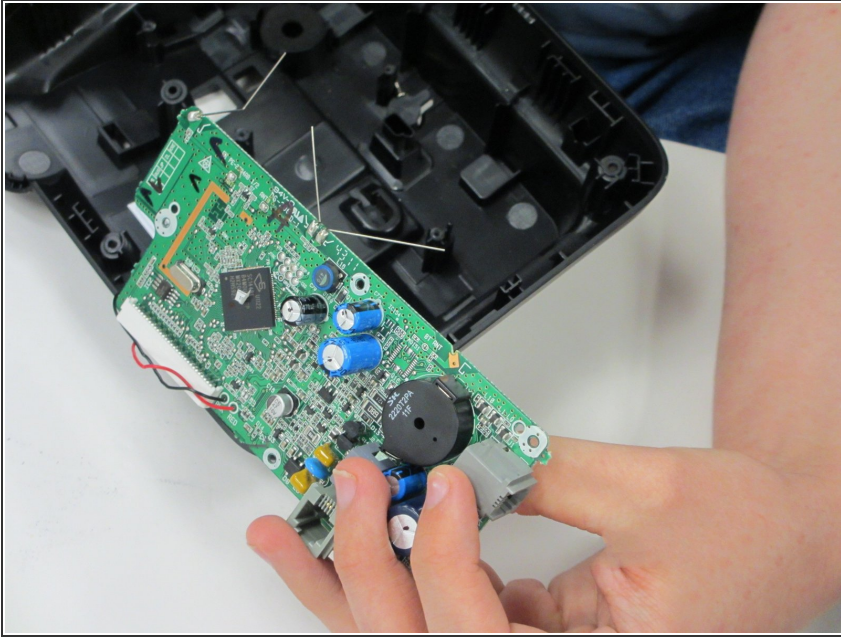
- Remove top shell circuit board by lifting the circuit board out of the case

Step 8 — Bottom Circuit Board



- Unscrew bottom shell circuit board screws(Head size: 4mm Length: 8.6mm).

Step 9



- Lift bottom circuit board from the bottom shell.

To reassemble your device, follow these instructions in reverse order.