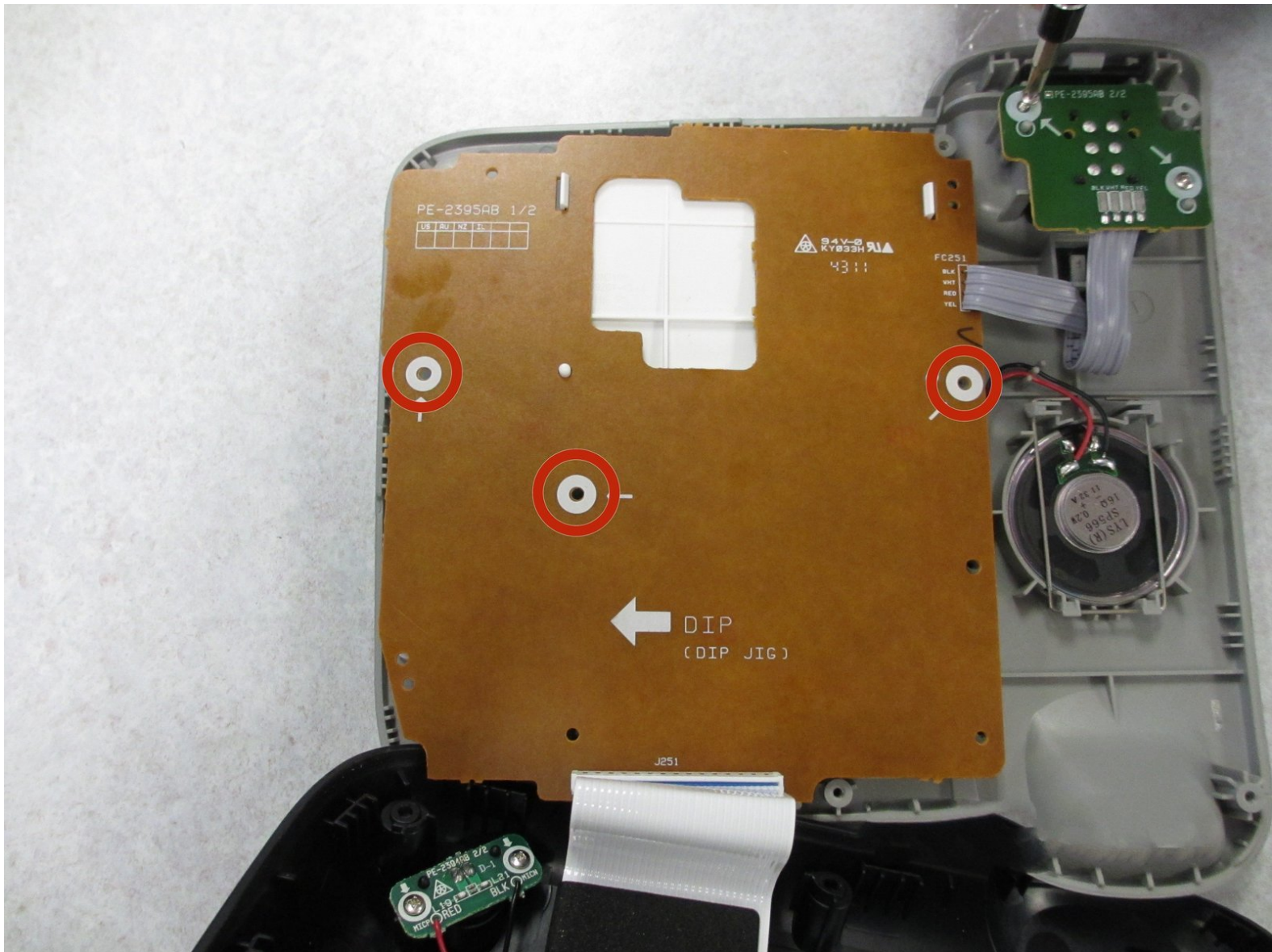




Uniden D1688 Top Circuit Board Replacement

Description of how to remove top shelf circuit board.

Written By: justin



INTRODUCTION

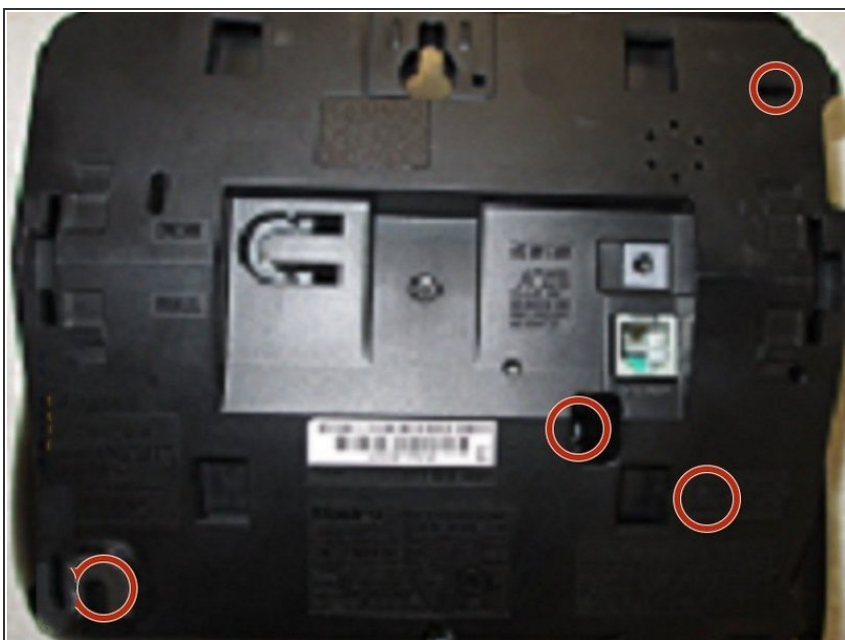
We are going to teach you how to remove the top shell circuit board. By removing this, you will learn how to use the spudger to get into very tight spots. Also you will know how to remove the ribbon.



TOOLS:

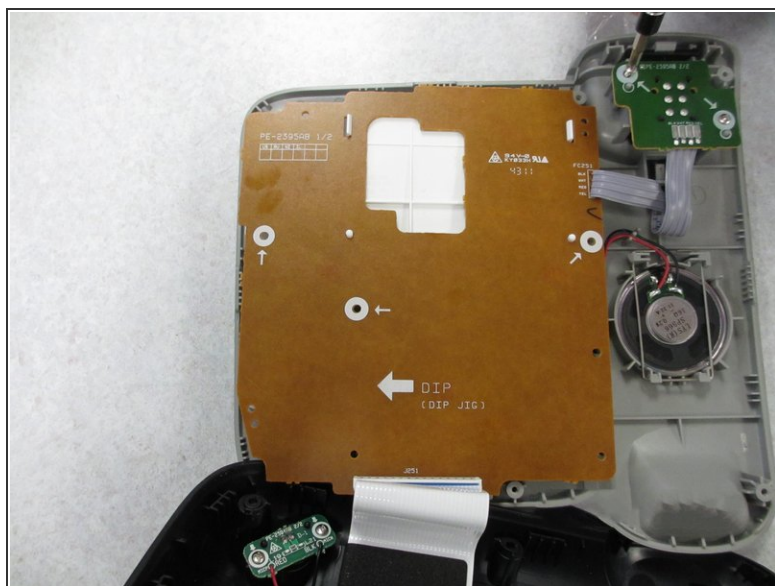
- [Phillips #1 Screwdriver](#) (1)
 - [Spudger](#) (1)
-

Step 1 — Uniden D1688 Base Replacement



- Unplug the phone from the base by detaching the RJ-11 plug.
- Flip the base upside down, and use the Phillips #01 screwdriver to unscrew the seven screws (Head size: 5.11mm, length: 8.6mm) on the underside of the base.

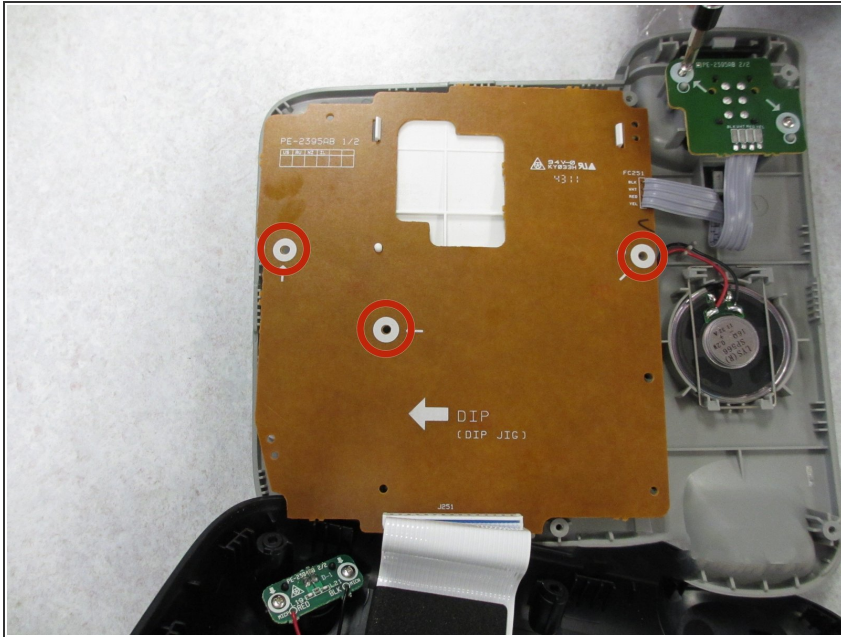
Step 2



- Using the spudger, separate the top shell of the base from the bottom shell from the base.
- ⚠ Use care when separating the base so the ribbon cable between the top shell circuit board and the bottom shell circuit board is not damaged!
- Lift the top shell off the bottom, and you have successfully opened the phone base.

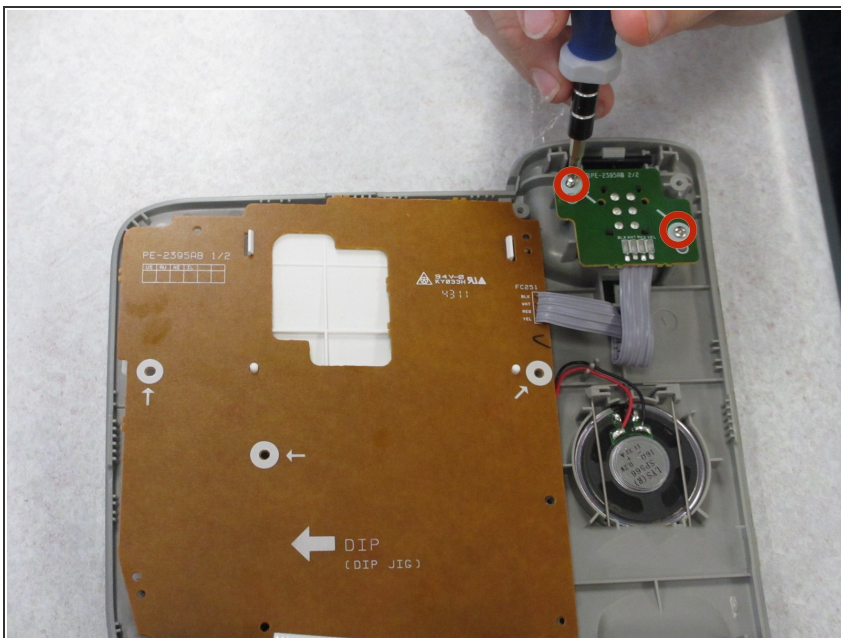
This document was generated on 2019-09-25 08:50:15 AM (MST).

Step 3 — Top Circuit Board



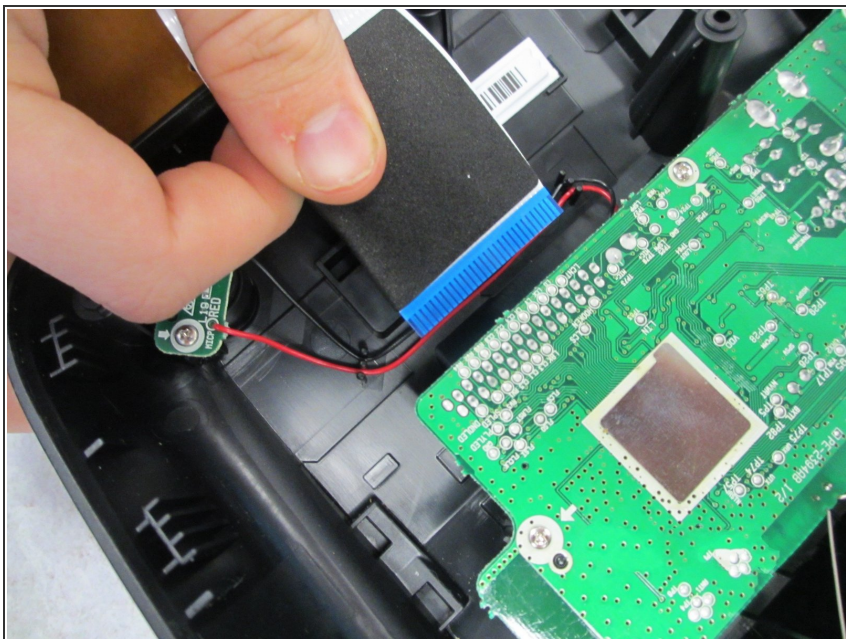
- Unscrew the 3 screws(Head Size: 4mm Length: 8.6 mm) from the top shell circuit board.

Step 4



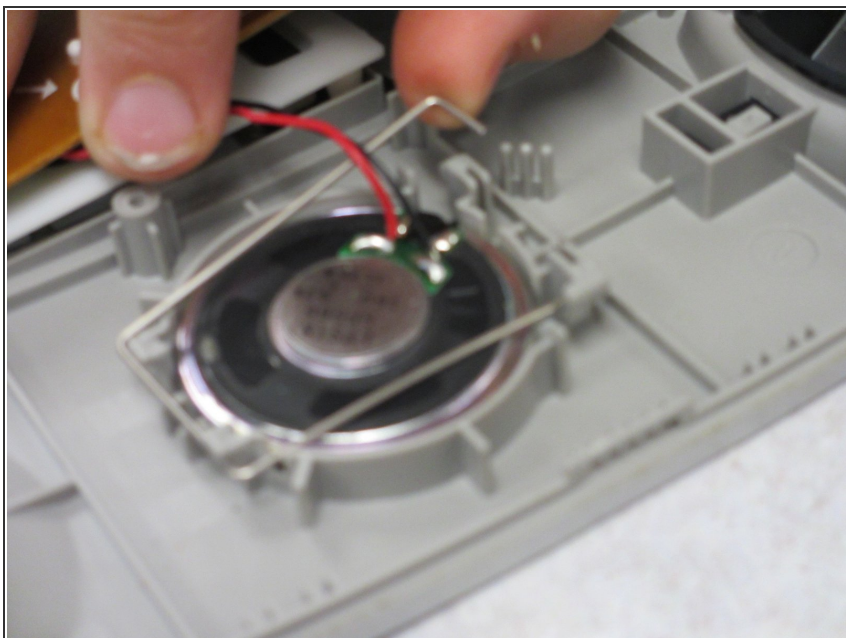
- Unscrew the 2 screws (Head Size: 4mm Length: 8.66) on the small circuit board in the top shell.

Step 5



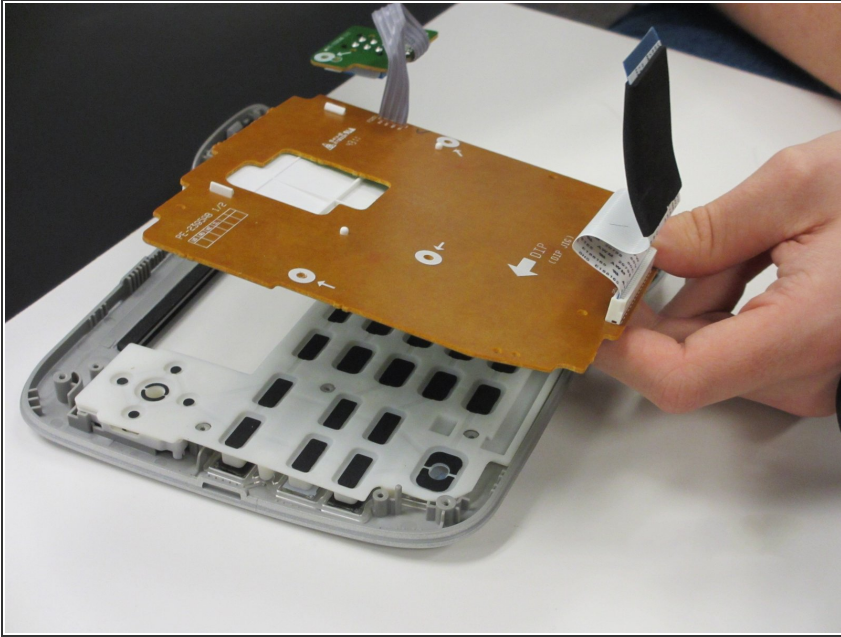
- Disconnect the ribbon cable from the bottom shell circuit board.

Step 6



- Release the speaker from the locking pin by pushing down on each ending side of the pin and pushing it away from the speaker.

Step 7



- Remove top shell circuit board by lifting the circuit board out of the case

To reassemble your device, follow these instructions in reverse order.