



Urge Basics Soundbrick Speaker Woofer Replacement

How to replace the internal woofers of the Urge Basics Soundbrick portable speaker.

Written By: Itzel Urueta



INTRODUCTION

This guide will teach you how to replace a malfunctioning internal woofer of the Urge Basics Soundbrick portable speaker. This replacement can take place at anytime as long as there is plenty of light. To complete this repair, the you will need a Phillips #1 Screwdriver, the replacement woofers, and the Urge Basics Soundbrick.



TOOLS:

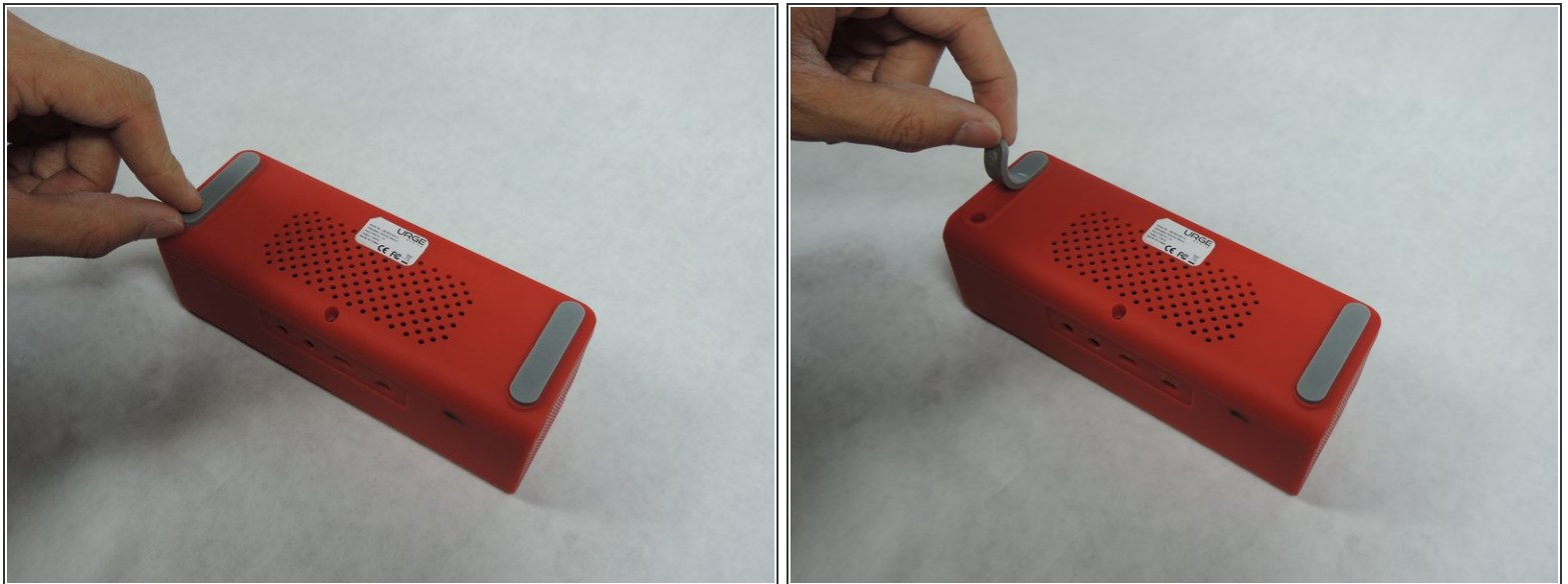
- [Phillips #1 Screwdriver](#) (1)
-

Step 1 — Speaker Woofer



- Flip the speaker upside down.
- Unscrew the middle screw with a Philips #1 screwdriver.

Step 2



- Peel off the two gray tabs to expose the four inner Philips #1 screws.

Step 3



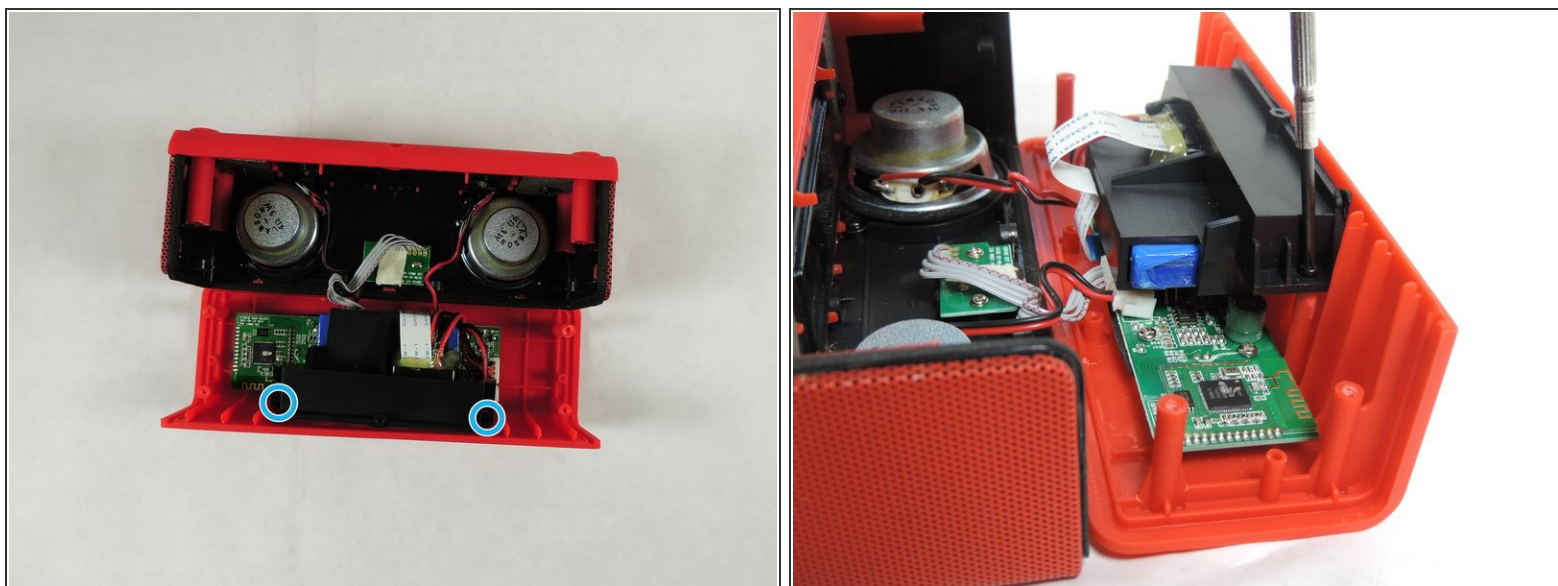
- Unscrew all four screws with a Philips #1 screwdriver.
- ⓘ The screws are deep and can be difficult to take out.

Step 4



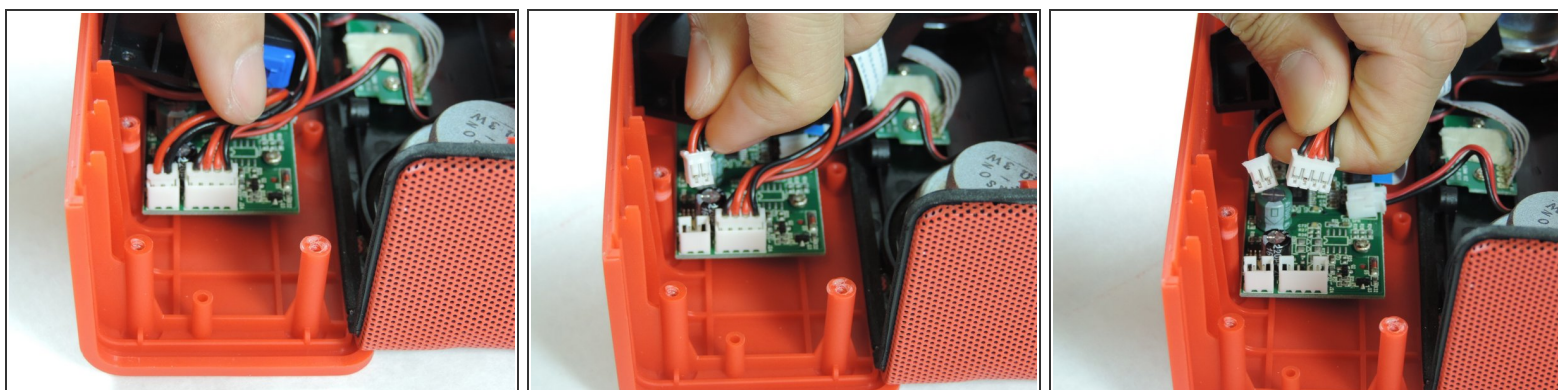
- Flip the speaker so that the ports are facing up.
- Unfold the speaker's cover away from the body.

Step 5



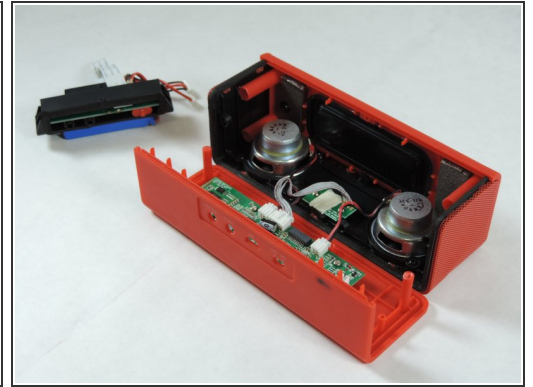
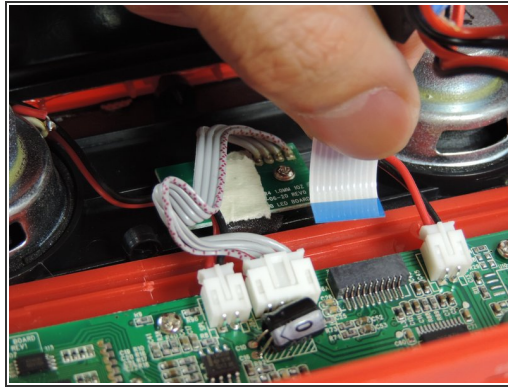
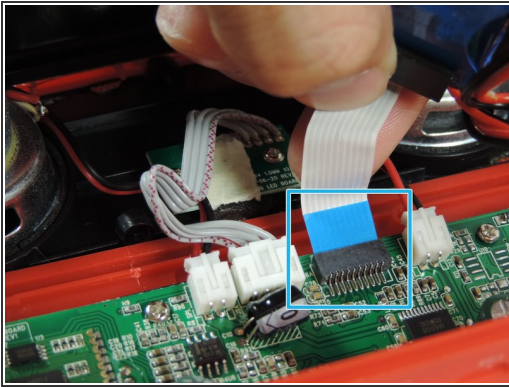
- Remove the two Phillips #1 screws found on each side of the battery compartment.
- ⚠ Removal of battery compartment is necessary to prevent electric shock when replacing the woofer.

Step 6



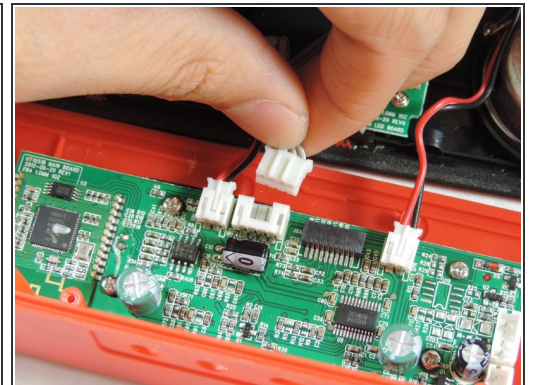
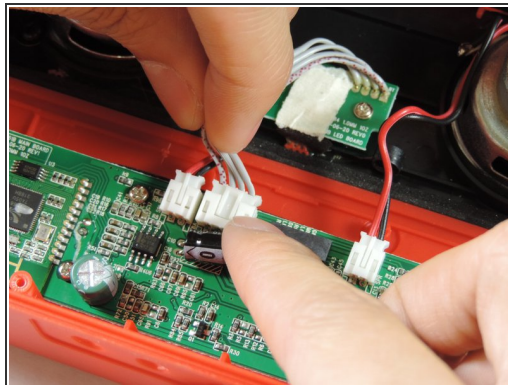
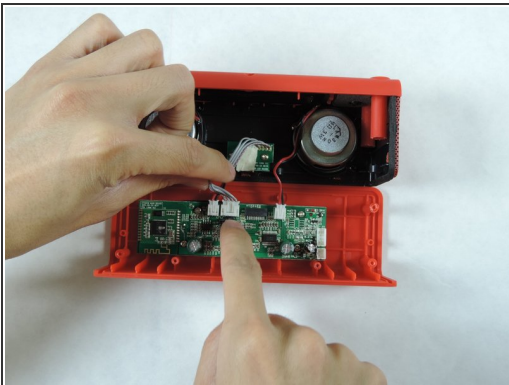
- Disconnect the battery connectors attached to the circuit board by unplugging them.

Step 7



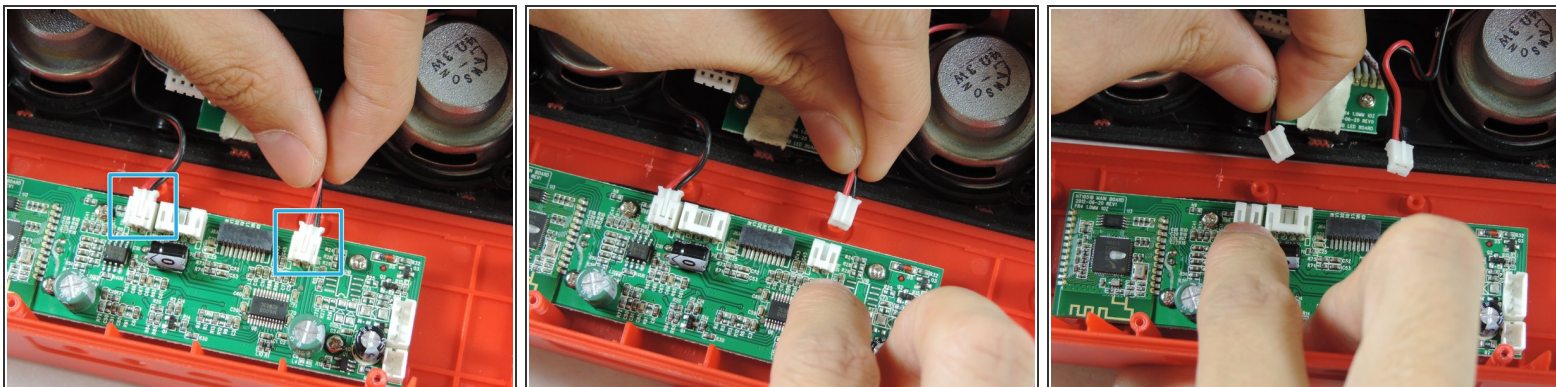
- Disconnect the ribbon cable from the battery by carefully pulling it out.
- Remove the battery compartment.

Step 8



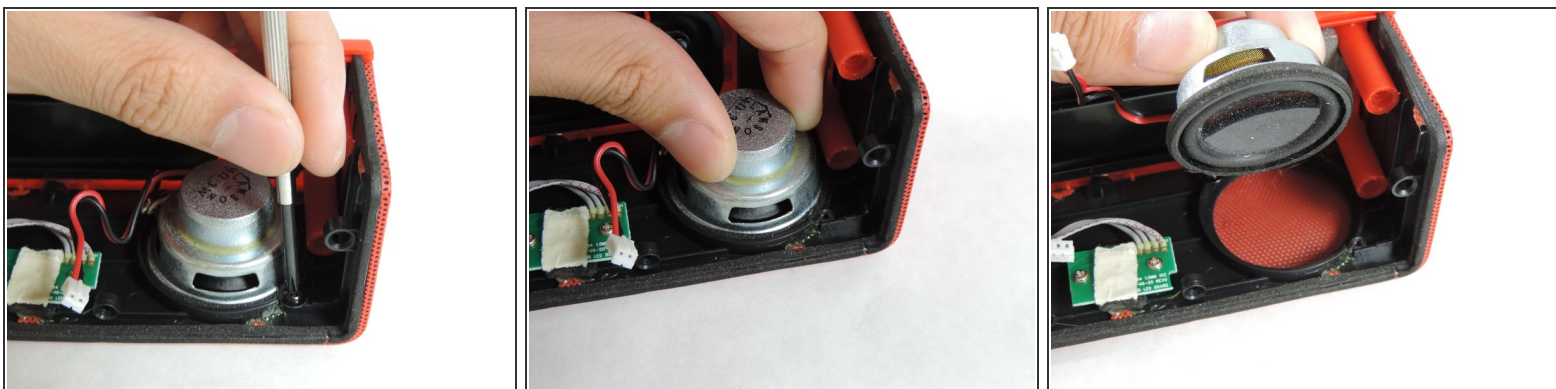
- Disconnect the adjacent connector from the main circuit board.

Step 9



- Disconnect the woofer's two connectors from the main circuit board.

Step 10



- Remove the two Phillips #1 screws keeping each woofer in place.
- Carefully remove the woofers and replace them with new ones.

To reassemble your device, follow these instructions in reverse order.