



# VIT P2402 Laptop Disassembly

Disassembling the Venezuelan laptop VIT P2402 to access the charging pin and adjust it or replace it. You can also change the RAM memory or the hard drive

Written By: Marcos Mora



---

## INTRODUCTION

The charging pin of the VIT P2402 represents a serious design flaw. It can move easily toward the inside of the chassis which can stop the laptop from charging properly.

---

### TOOLS:

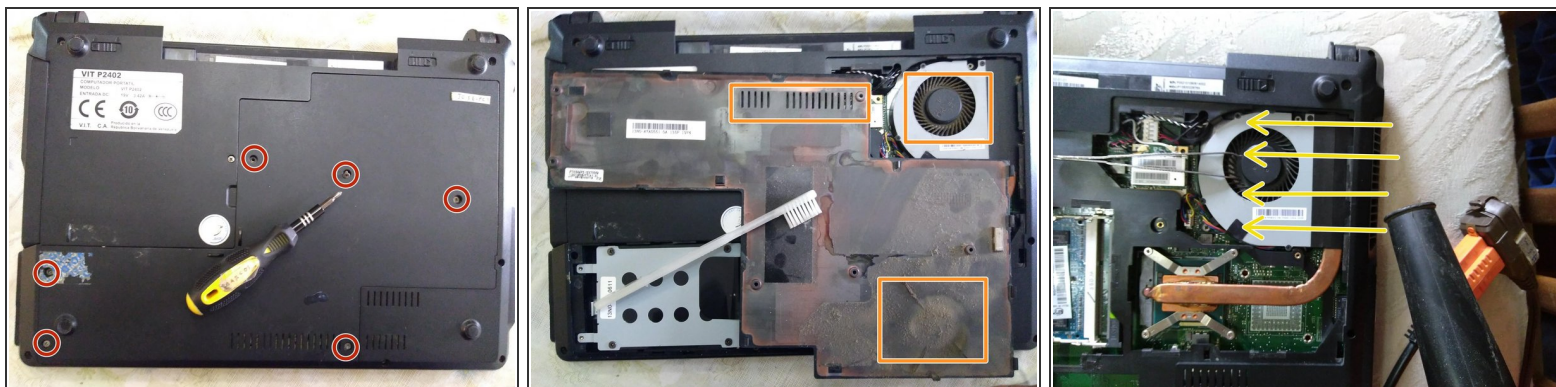
- [Phillips #00 Screwdriver](#) (1)
-

## Step 1 — Removing the Battery



- Place the laptop upside down, with the battery up.
- Slide the security latch to the left.
- Slide the security latch to the right with force
- The second security latch ejects the battery from its place. Remove it.

## Step 2 — Remove the service panel



- Remove the six Phillips 00 screws that hold the service panel.
- Remove the panel and clean it with a brush. Take special care in the slits and fan area.
- Use a blower to remove dust from the fan. You must avoid turning this with pliers. The flow should be opposite to normal the normal circulation when the laptop is turned on. Use a small brush to loosen the dust.

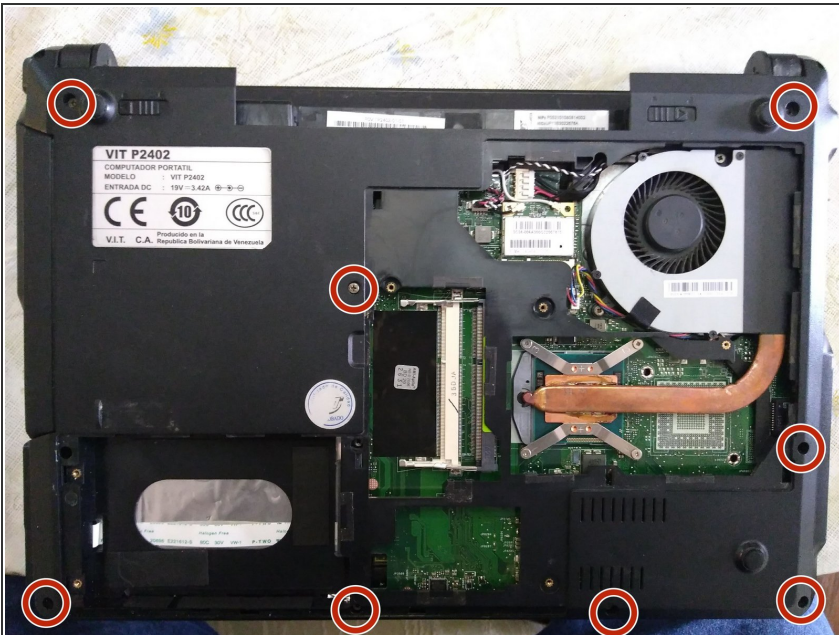


### Step 3 — Remove the memory and the hard drive



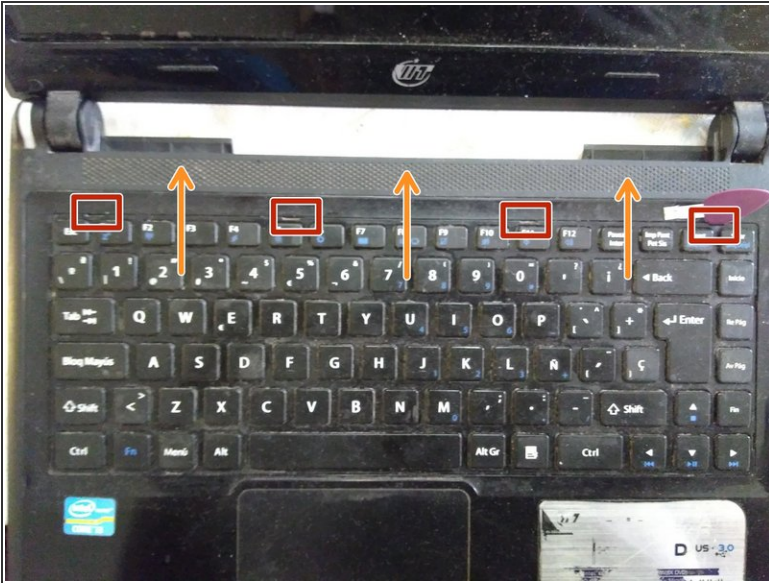
- Pull both retention hooks until the memory tilts.
- Remove the memory
- Pull the hard drive case so that you can move it to the left
- Here we can see the SATA data and power connector.

### Step 4 — Remove the screws of the interior chassis



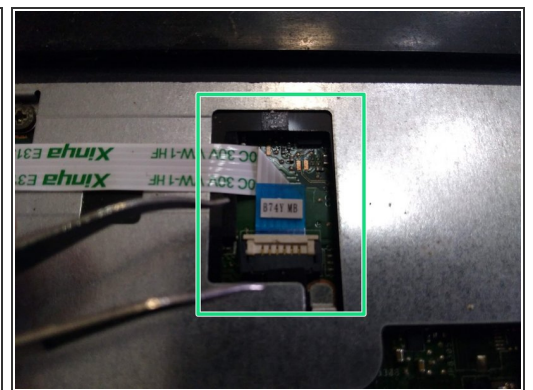
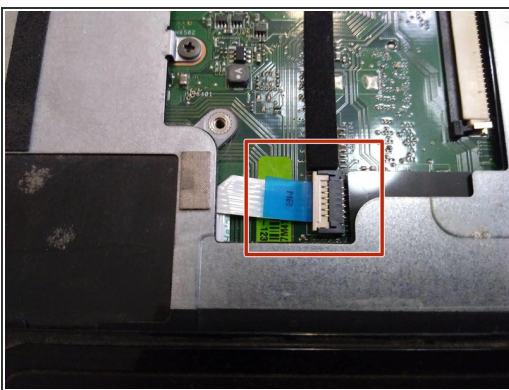
- Remove the 8 Phillips 00 screws from the inside chasis

## Step 5 — Remove the keyboard



- Flip the laptop right-side up and use the tabs to remove the upper part of the the keyboard
- Pull it slightly above the keyboard, enough to free the pegs from the inner part.
- Tilt the keyboard from the inner part first. Free the ribbon cable from its two retainers.

## Step 6 — Remove the two ribbon cables



- Remove the ribbon cable that connects the motherboard to the touchpad
- Lift the plastic retainer gently
- Remove the ribbon cable from the upper part the same way. This connects to the power button.



## Step 7 — Remove the screws and take out the DVD drive



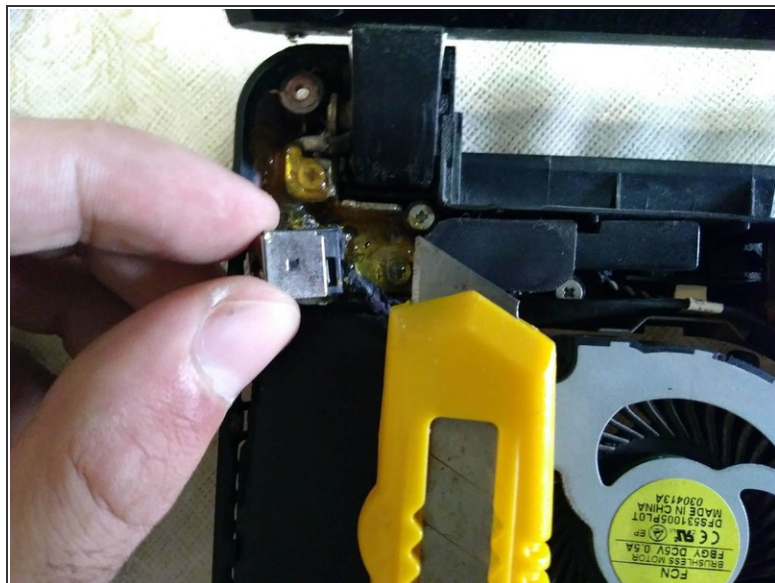
- Remove the two Phillips 00 screws
- Remove the internal DVD unit
- Remove the upper part of the chassis. Remove the powder from the other side.

## Step 8



- Proceed to clean the dust. You can remove the watch battery if necessary: model CR2032.
- Use a brush to clean the fan blades if possible.

## Step 9 — Charging Pin



- Here we see the epoxy used to fix the charging pin, it can be used to prevent any contact.
- Use an exacto knife to remove the excess epoxy.

Para volver a montar tu aparato, siga estas instrucciones en orden inverso.