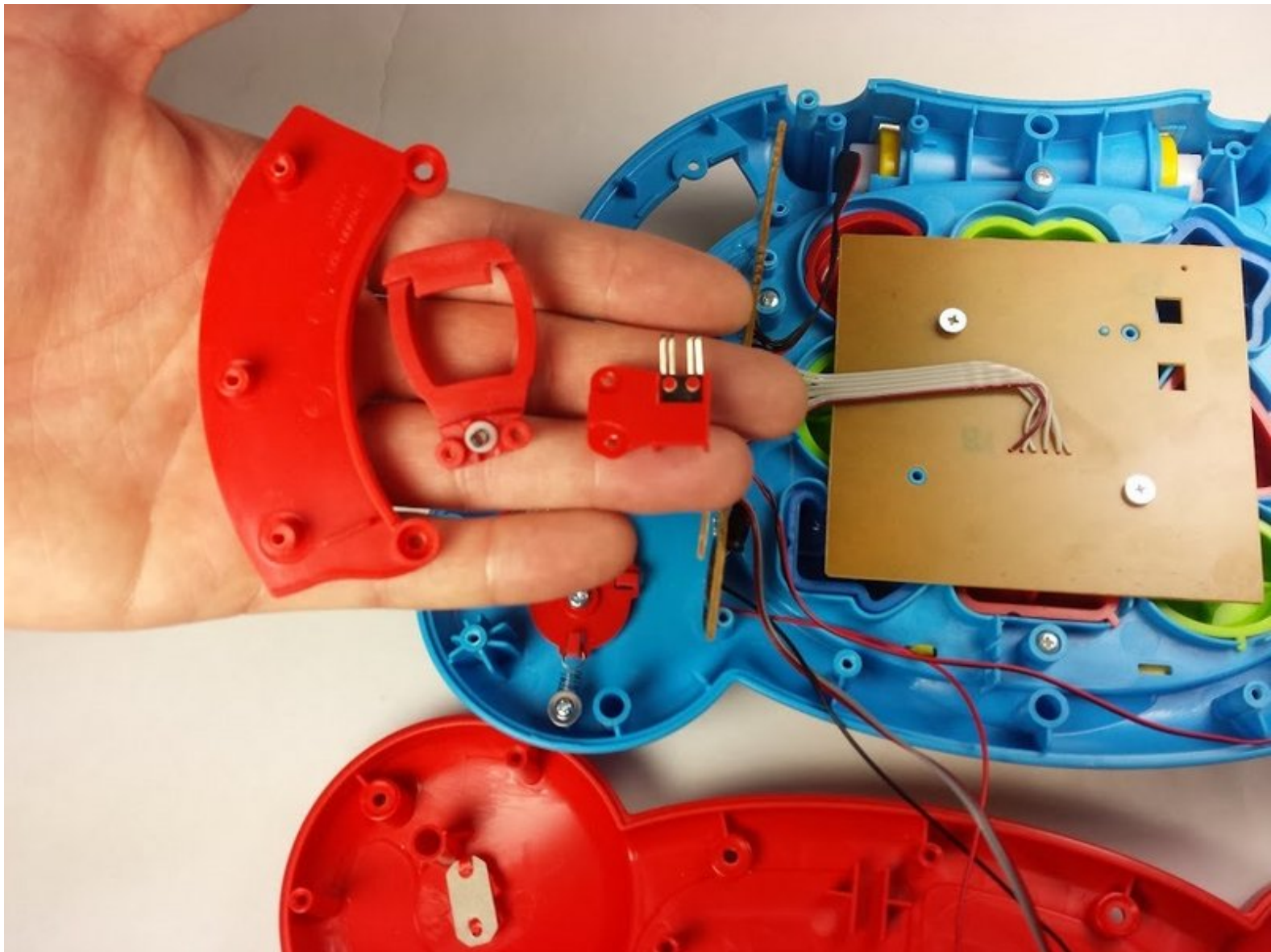




# VTech Baby's Learning Laptop Mode Switch Replacement

Replace the laptop mode switch assembly.

Written By: Scott Parkinson



# INTRODUCTION

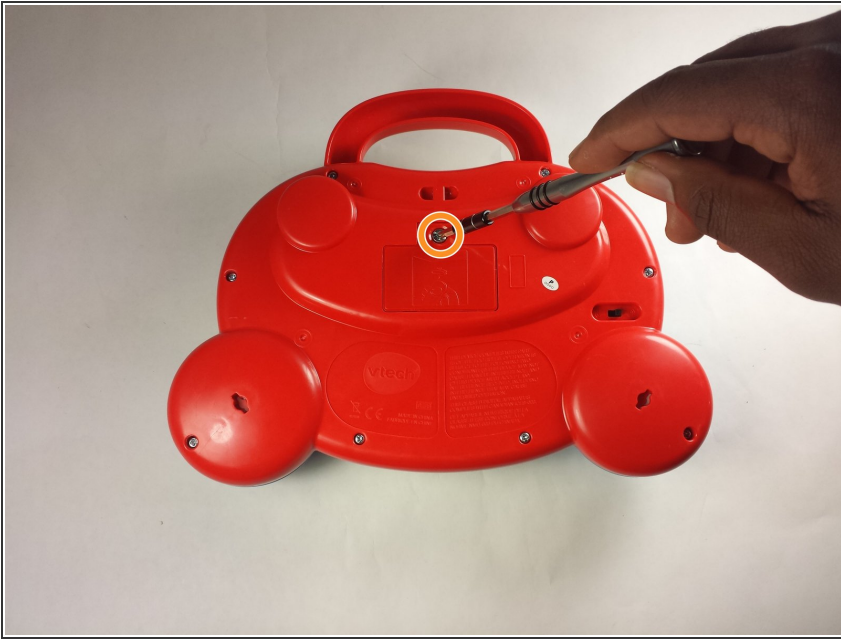
This guide will show you how replace a faulty mode switch if your device does not properly switch modes.



## TOOLS:

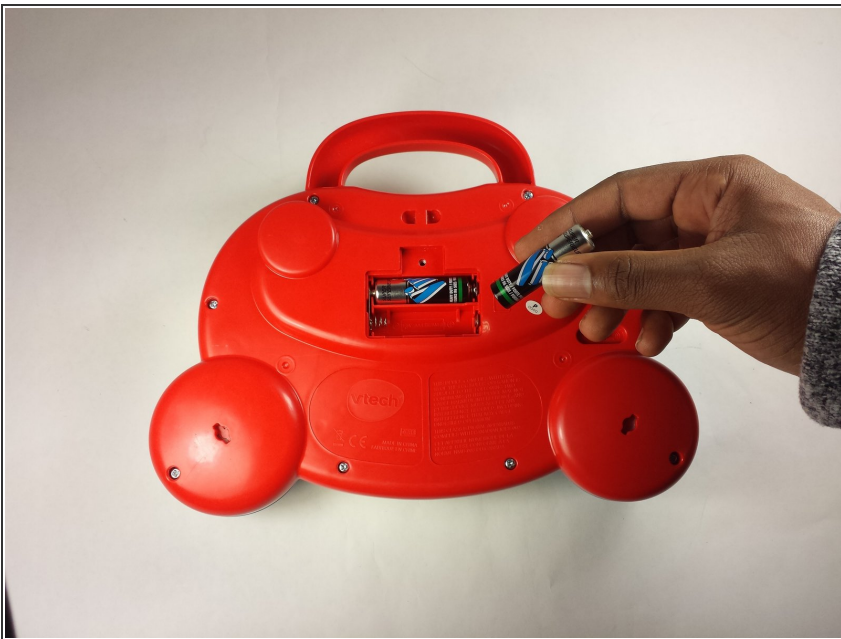
- [Phillips #0 Screwdriver](#) (1)
  - [iFixit Opening Tools](#) (1)
  - [Phillips #2 Screwdriver](#) (1)
-

## Step 1 — Battery and Rear Panel



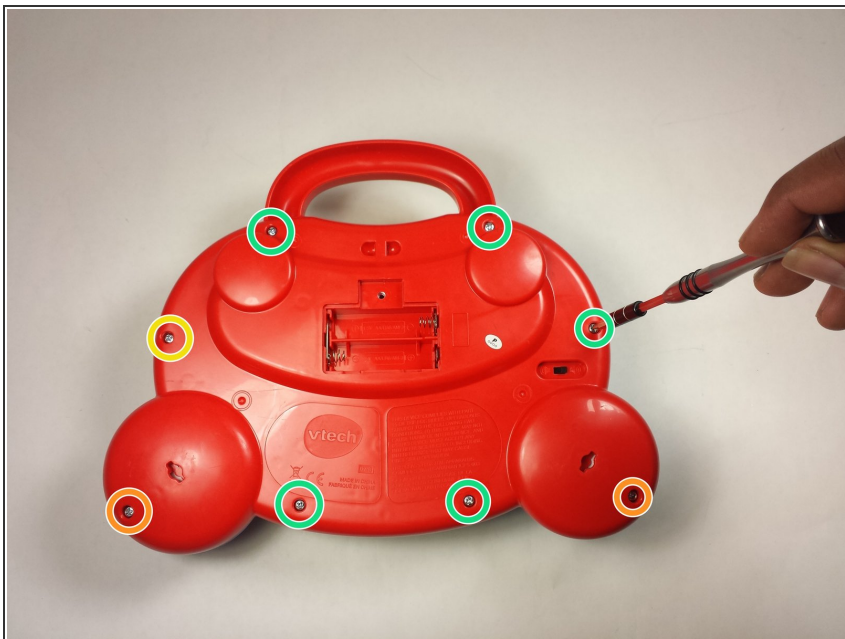
- To remove the battery door, loosen the screw shown using a Phillips #2 screwdriver.
- ⓘ A coin can also be used to loosen the screw.

## Step 2



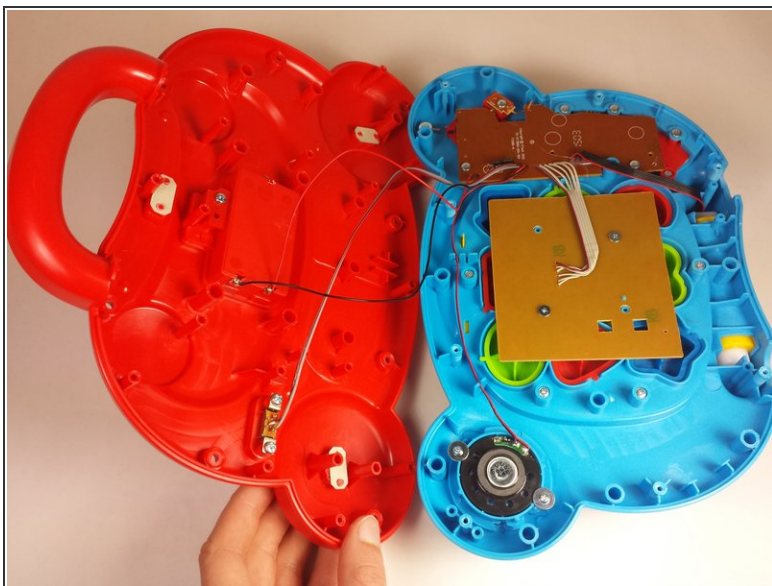
- Remove the battery door.
- Take out the batteries.

### Step 3



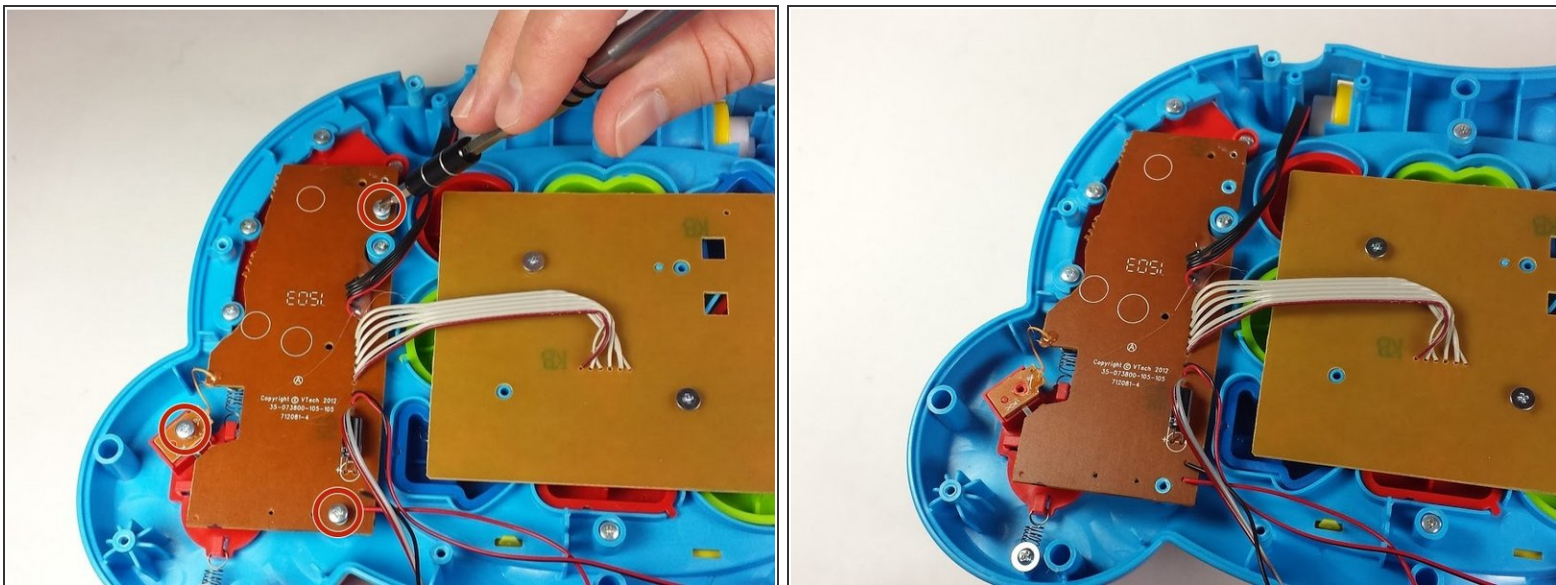
- Remove the rear panel screws using a Phillips #2 screwdriver.
- Two 21.6mm (Long)
- One 9.8mm (Short)
- Five 13.8mm (Medium)

### Step 4



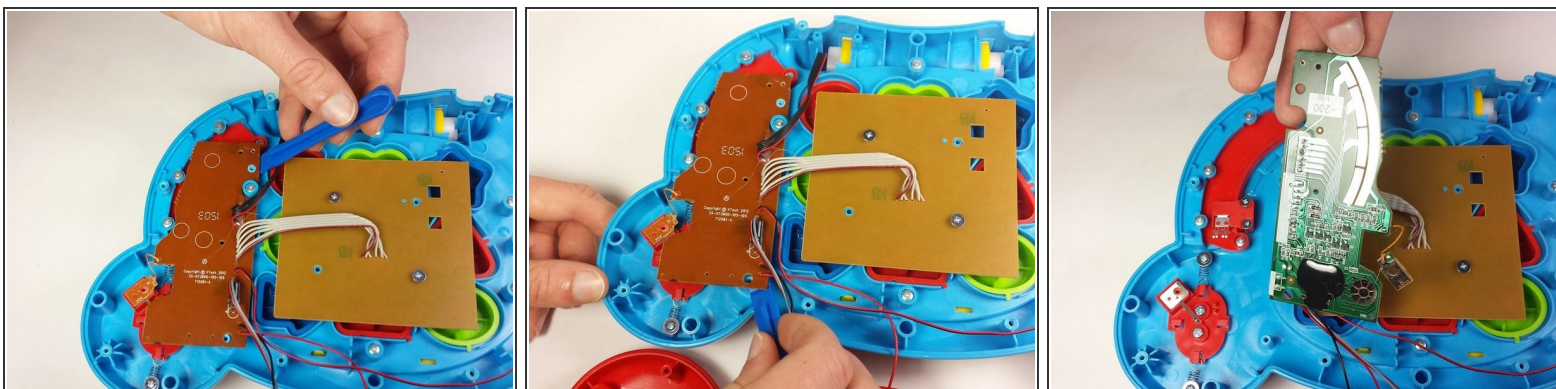
- Gently pull up on the rear panel.
- ⚠ Be careful not to pull on the wire connections.
- Rest the laptop open on the table.

## Step 5 — Mode Switch





- Using a Phillips #0 screwdriver, remove the three 7.3mm screws.

## Step 6

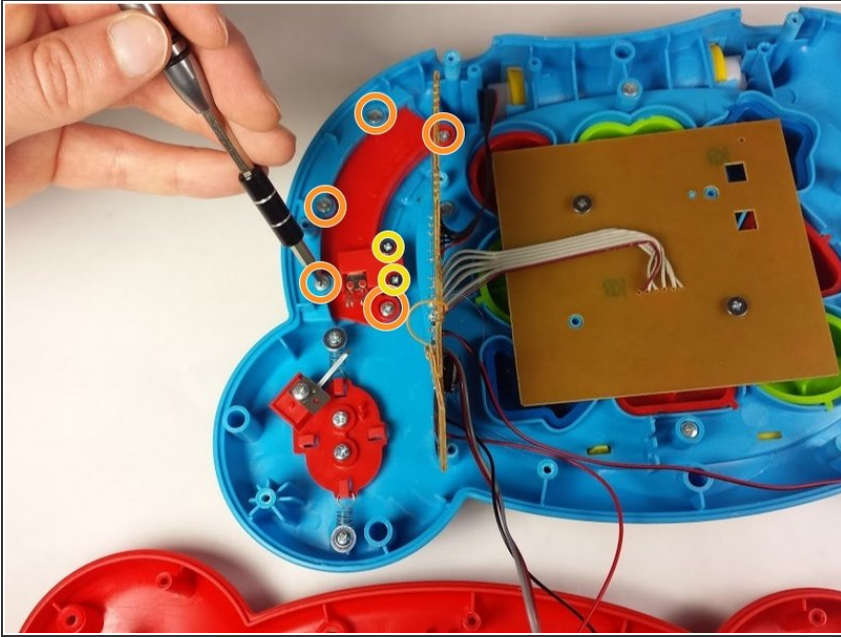


- Once the screws have been removed from the board, use a plastic opening tool to gently pry up the board and expose the mode switch assembly underneath.

 Lay the board down gently and out of the way.

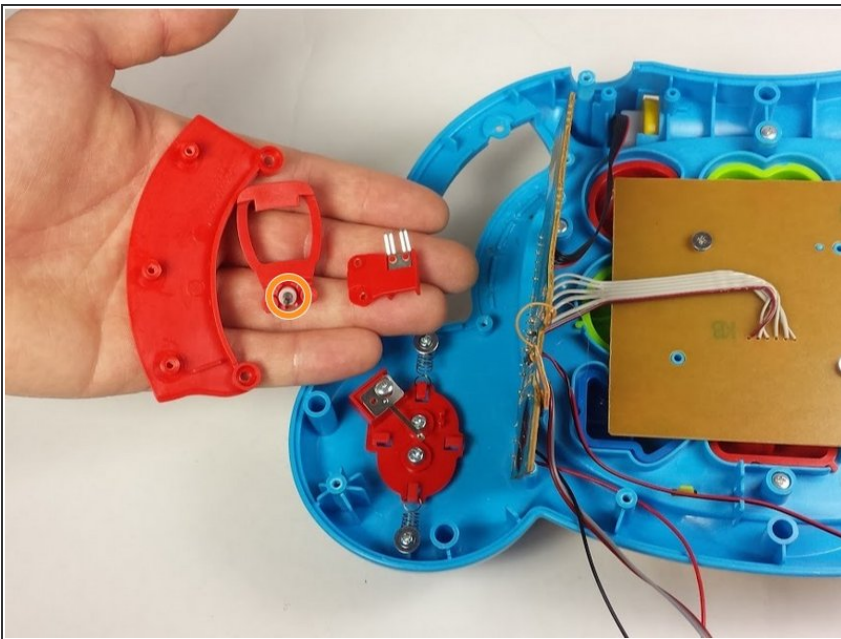
 Take care not to damage any of the wires or the board itself.

## Step 7



- Using a Phillips #0 screwdriver, remove the seven screws securing the mode switch assembly to the device.
  - Five 7.3mm
  - Two 6.0mm

## Step 8



- Once the screws have been removed, the mode switch assembly can be removed easily.
- ⚠ Take care not to misplace the spring indicated in the picture.
- You need this spring to find a matching replacement if it is in anyway damaged.

To reassemble your device, follow these instructions in reverse order.