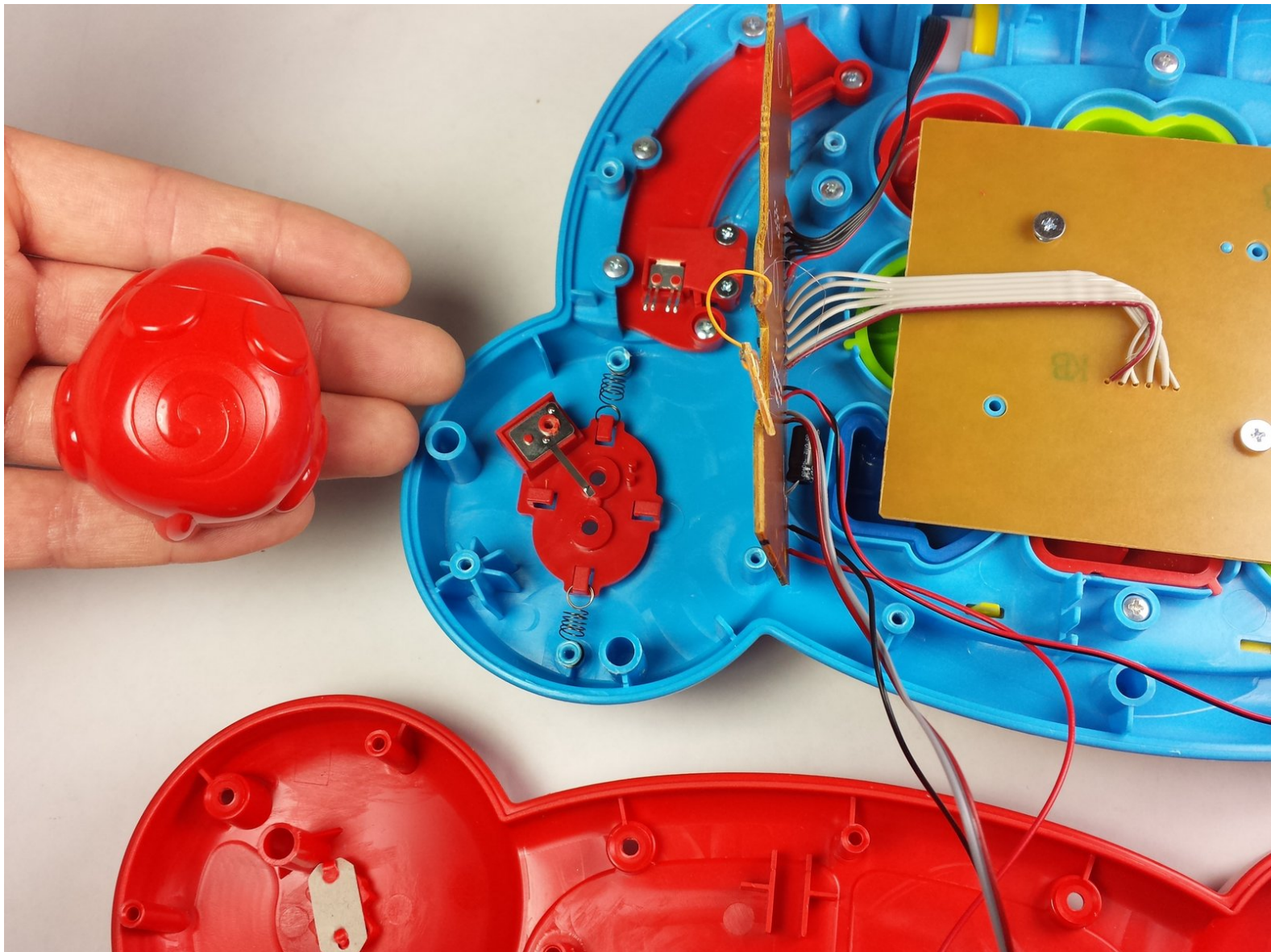




VTech Baby's Learning Laptop Mouse Replacement

Replace the mouse and corresponding components to ensure full functionality of the device.

Written By: Justin Schanze



INTRODUCTION

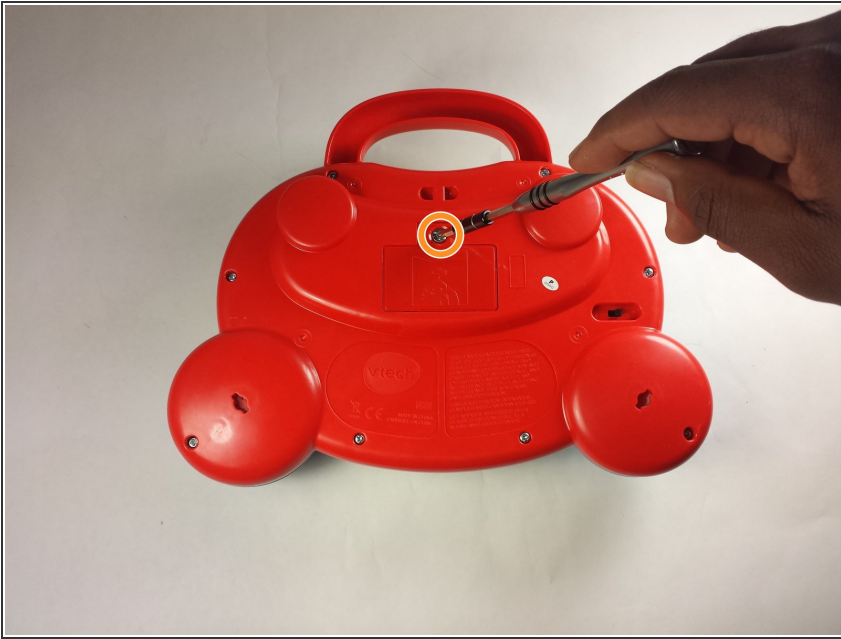
If the mouse has become unresponsive or does not center itself, the springs inside may have come loose or be broken altogether. Follow this guide to replace the mouse and its components.



TOOLS:

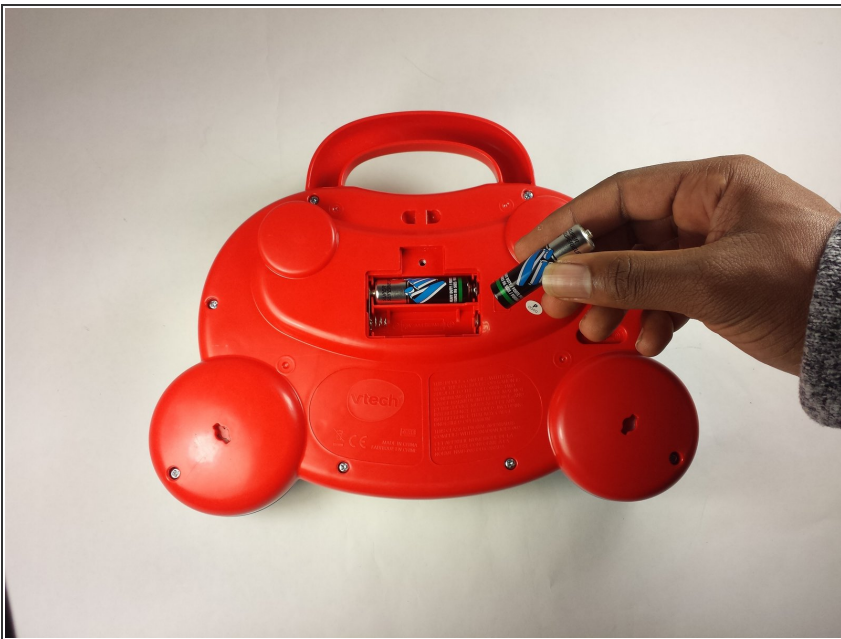
- [Phillips #2 Screwdriver](#) (1)
 - [iFixit Opening Tools](#) (1)
 - [Phillips #0 Screwdriver](#) (1)
-

Step 1 — Battery and Rear Panel



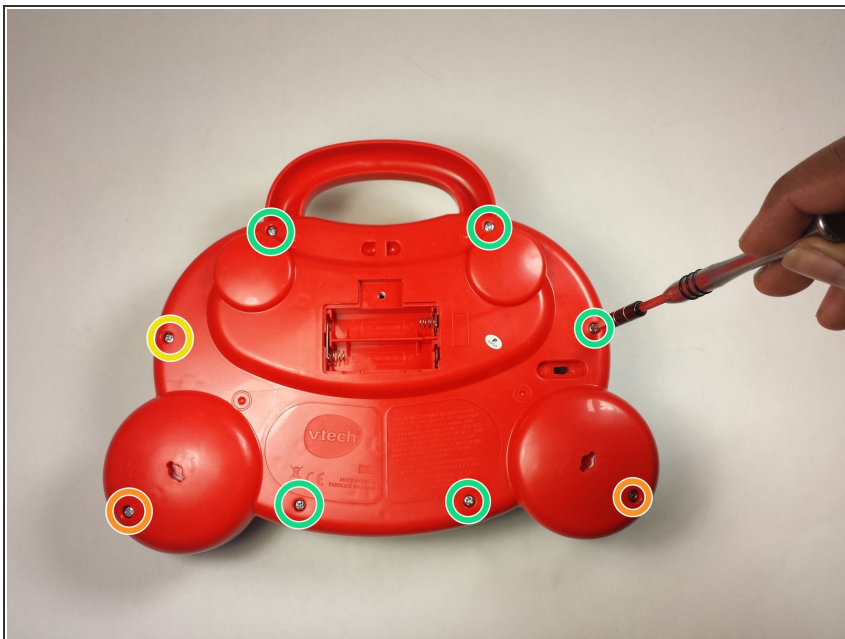
- To remove the battery door, loosen the screw shown using a Phillips #2 screwdriver.
- ⓘ A coin can also be used to loosen the screw.

Step 2



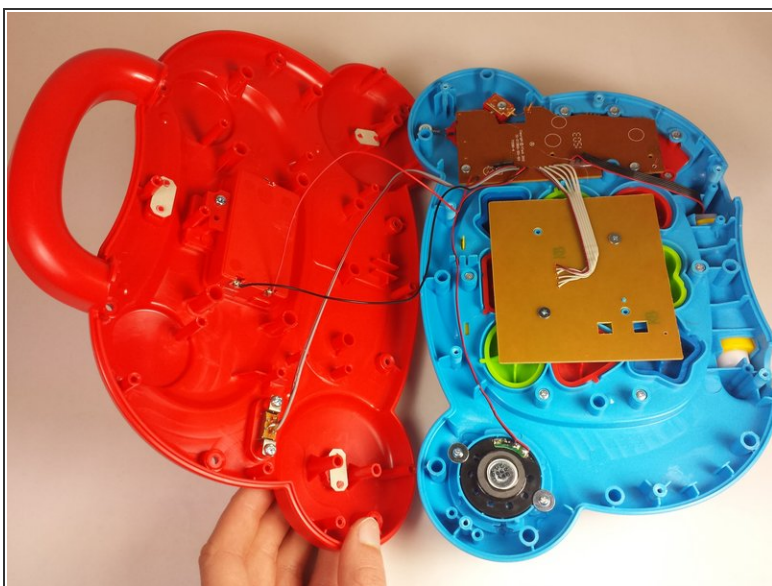
- Remove the battery door.
- Take out the batteries.

Step 3



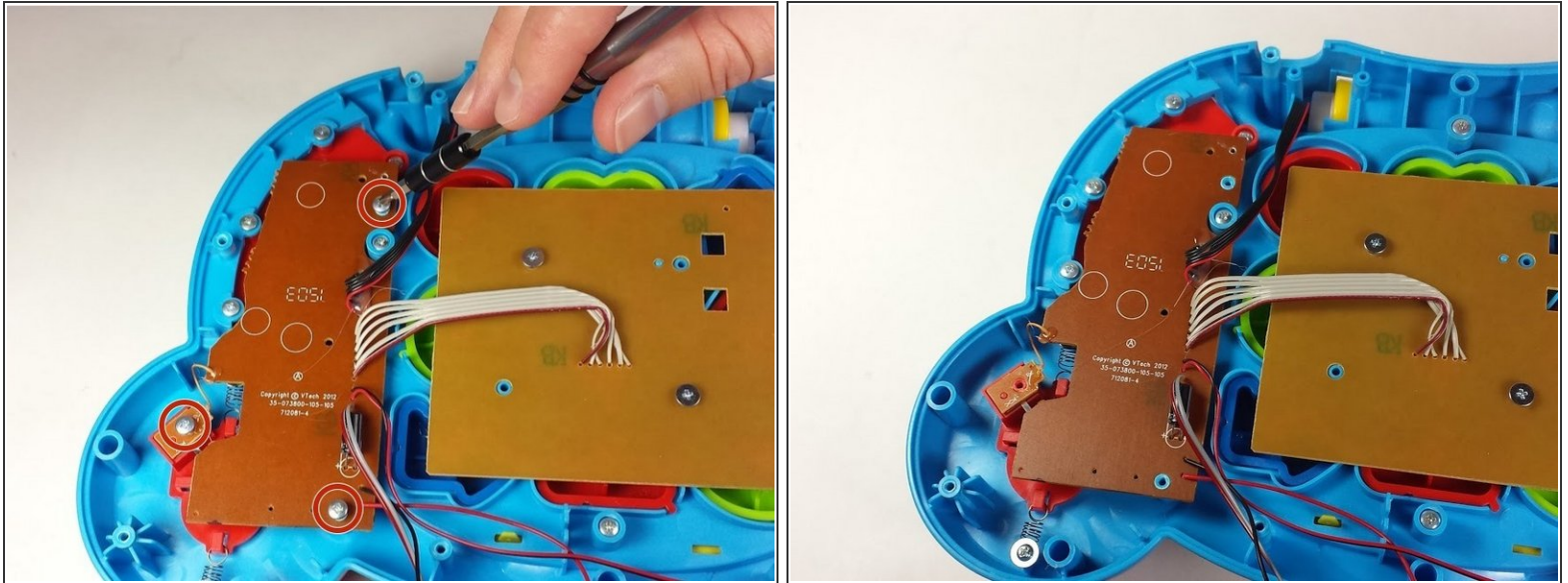
- Remove the rear panel screws using a Phillips #2 screwdriver.
- Two 21.6mm (Long)
- One 9.8mm (Short)
- Five 13.8mm (Medium)

Step 4



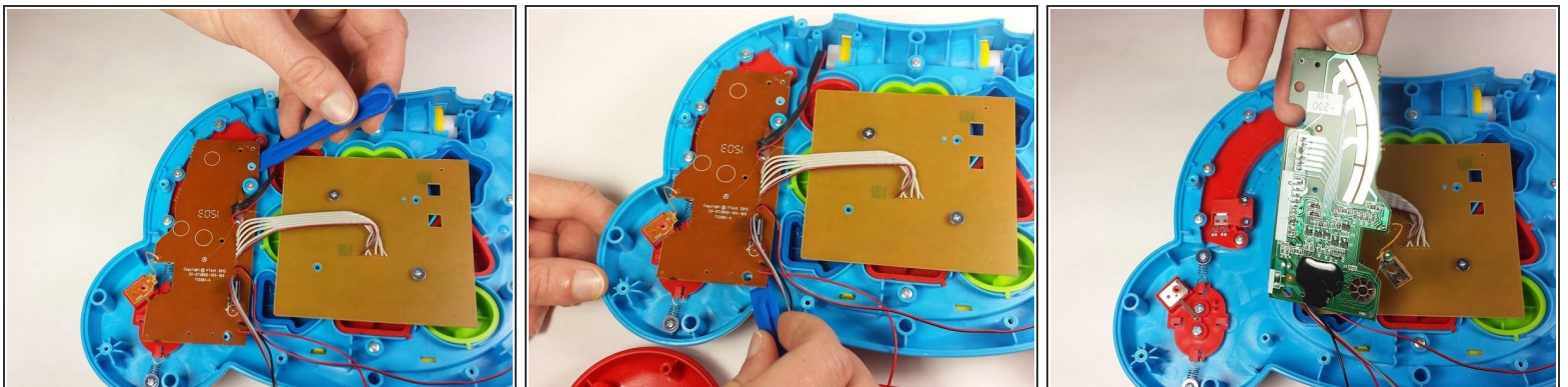
- Gently pull up on the rear panel.
- ⚠ Be careful not to pull on the wire connections.
- Rest the laptop open on the table.

Step 5 — Mouse



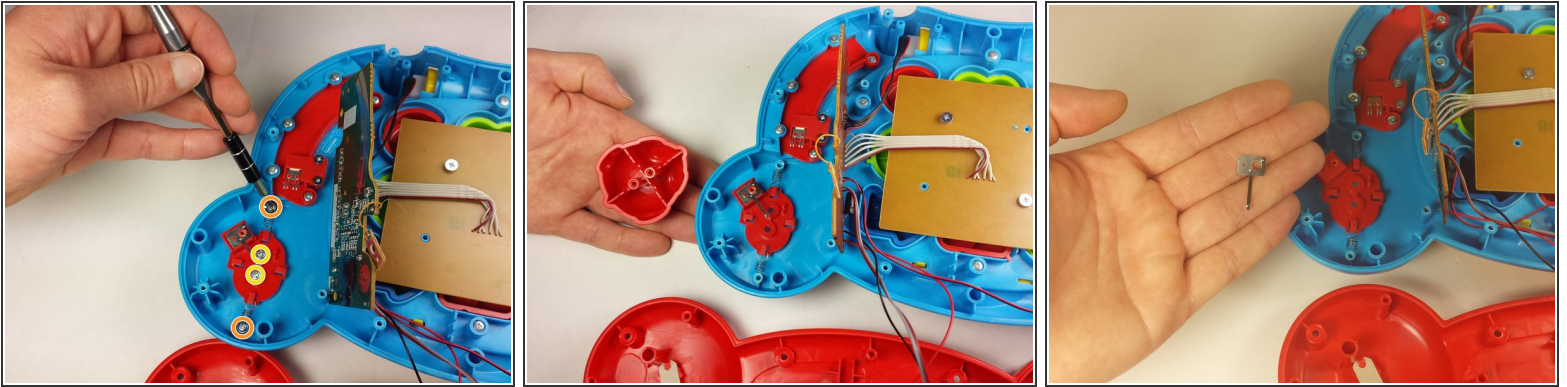
- Using a Phillips #0 screwdriver, remove the three 7.3mm screws.

Step 6



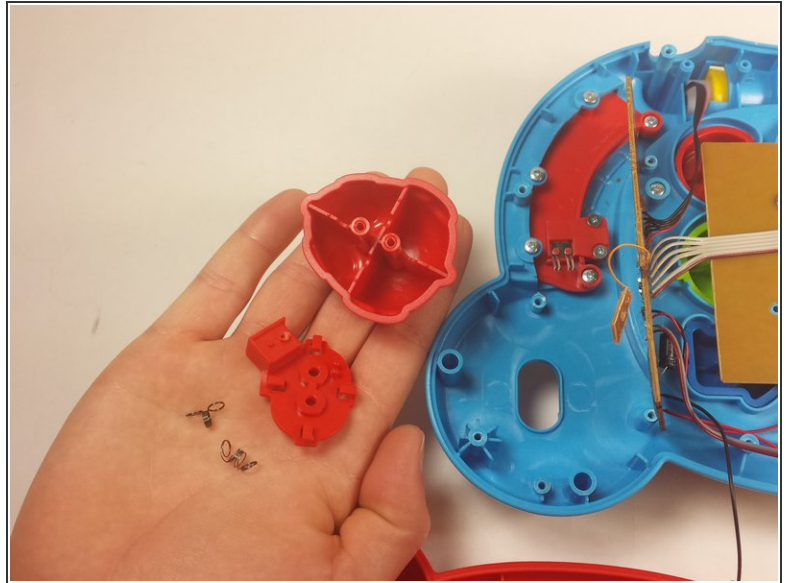
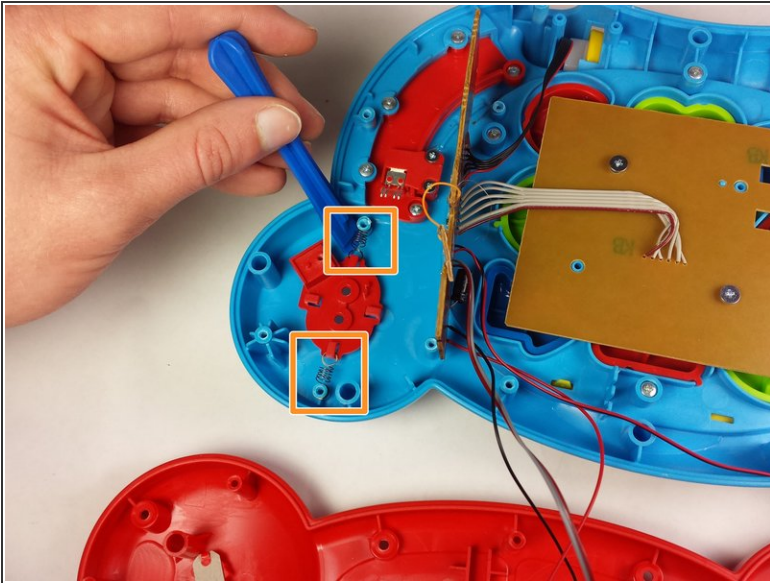
- Once the screws have been removed from the board, use a plastic opening tool to gently pry up the board and expose the mode switch assembly underneath.
- ⓘ Lay the board down gently and out of the way.
- ⚠ Take care not to damage any of the wires or the board itself.

Step 7



- Locate and remove the following screws:
 - Two 11.0mm Phillips #2.
 - Two 7.3mm Phillips #0.
- Remove the top of the mouse which will separate from the under side once the screws are removed.
- ⓘ The metal connection near the yellow screws on the top left of the mouse assembly falls out very easily. Make sure to replace the metal connection with the prong pointing up. Otherwise, the mouse will not work correctly.

Step 8



- Lift the springs up from the screw pegs with a plastic opening tool.
 - Remove the final part of the mouse.
- ☑ Before reassembly, see the note on the previous step.

To reassemble your device, follow these instructions in reverse order.