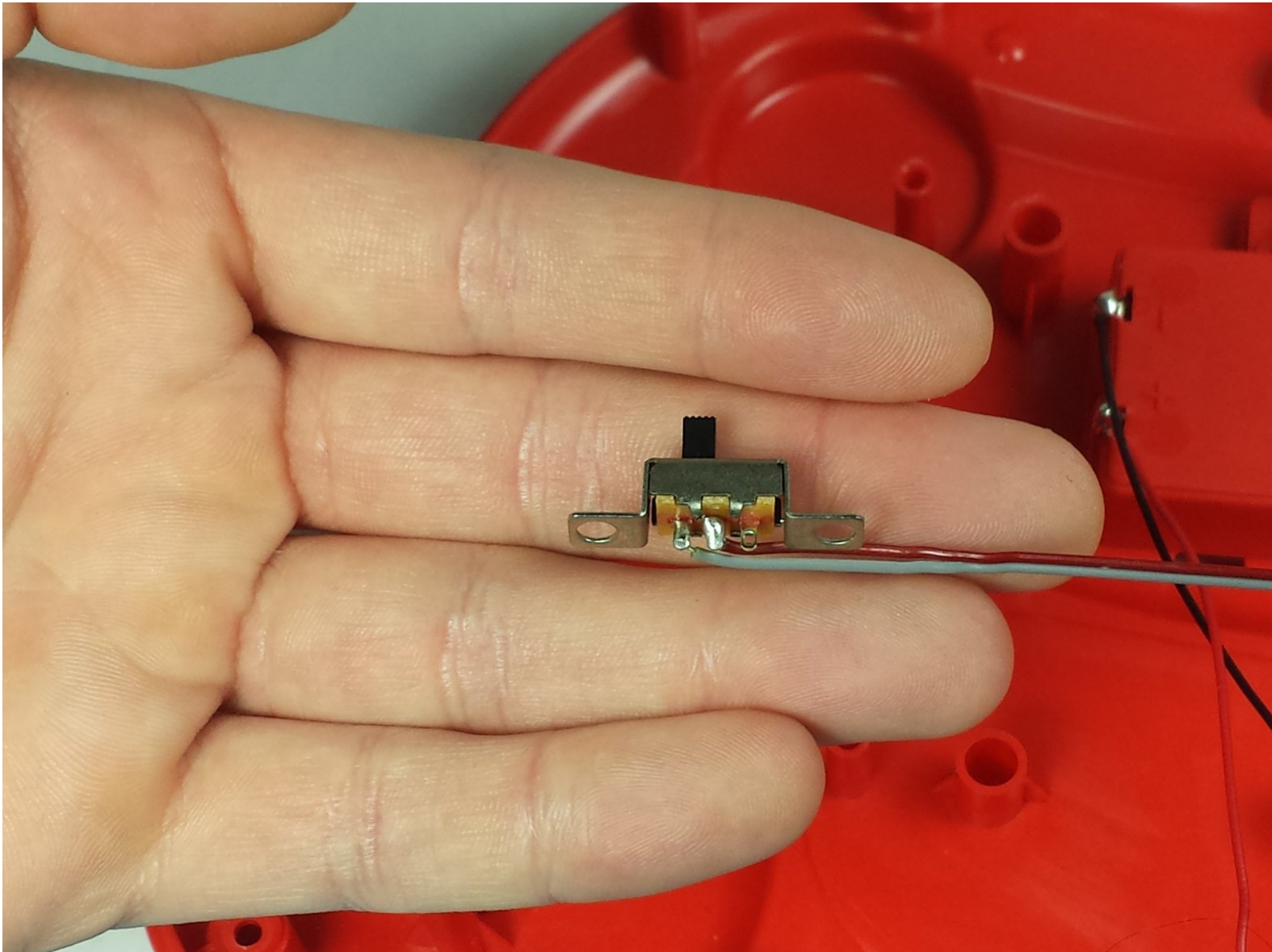




VTech Baby's Learning Laptop Volume Switch Replacement

Replace the volume switch for your device to revitalize the exuberant sounds.

Written By: Jordan Smith



INTRODUCTION

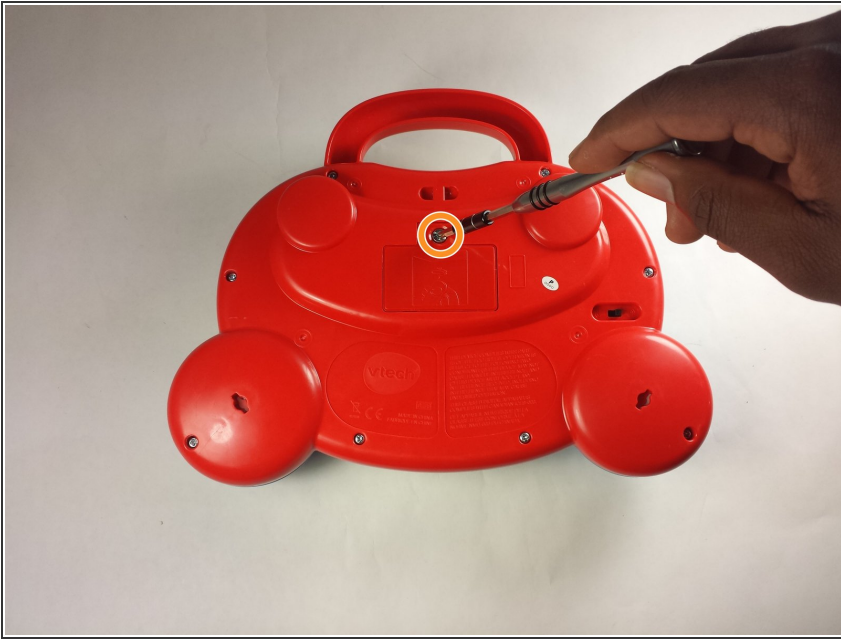
Has the sound for your device suddenly stopped working? Unable to adjust the volume? This guide may be the solution to your problem.



TOOLS:

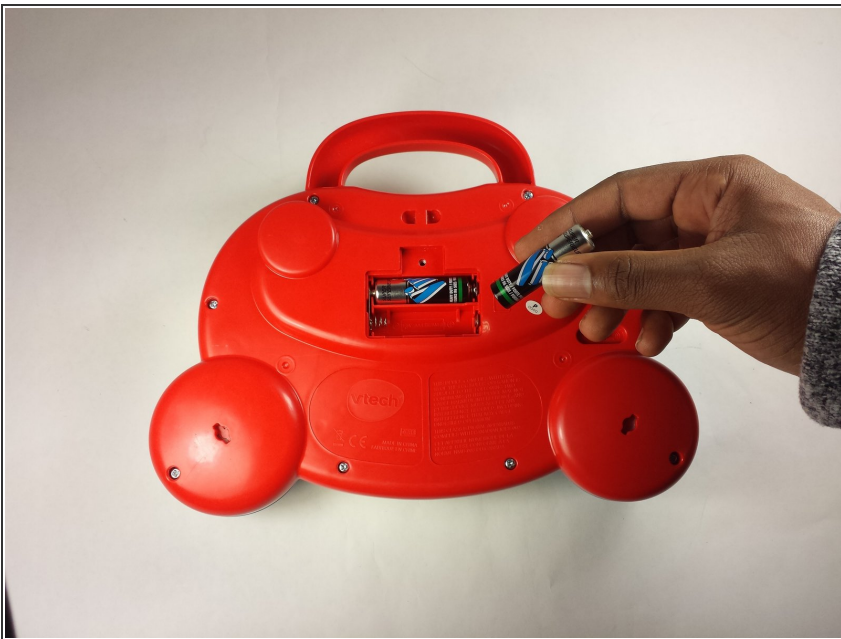
- [Phillips #2 Screwdriver](#) (1)
 - [Phillips #0 Screwdriver](#) (1)
-

Step 1 — Battery and Rear Panel



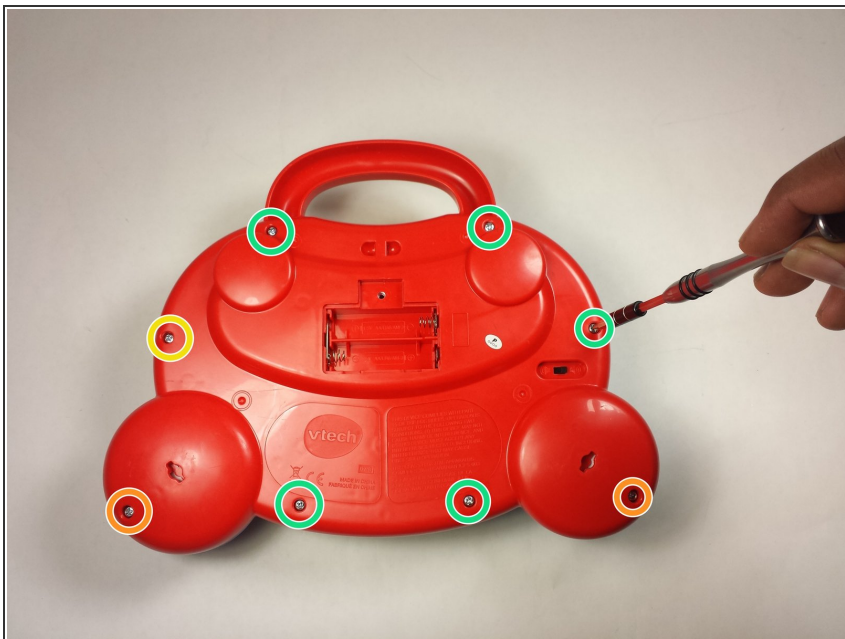
- To remove the battery door, loosen the screw shown using a Phillips #2 screwdriver.
- ⓘ A coin can also be used to loosen the screw.

Step 2



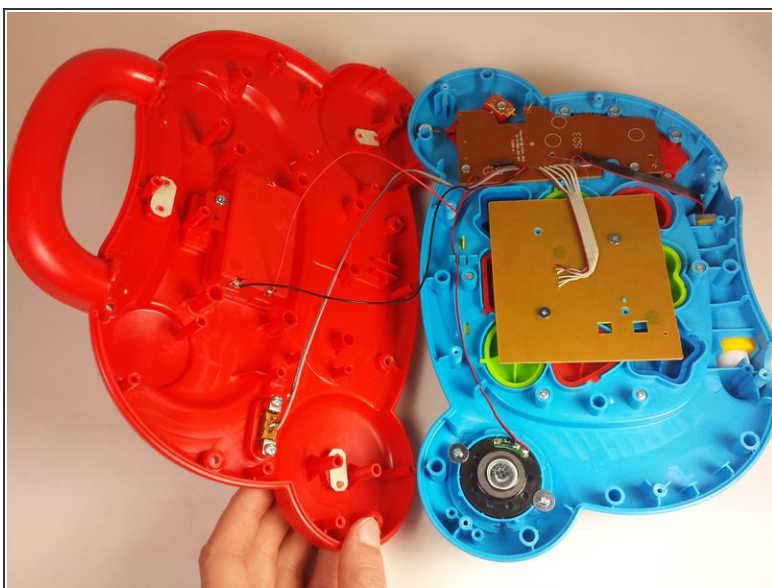
- Remove the battery door.
- Take out the batteries.

Step 3



- Remove the rear panel screws using a Phillips #2 screwdriver.
- Two 21.6mm (Long)
- One 9.8mm (Short)
- Five 13.8mm (Medium)

Step 4



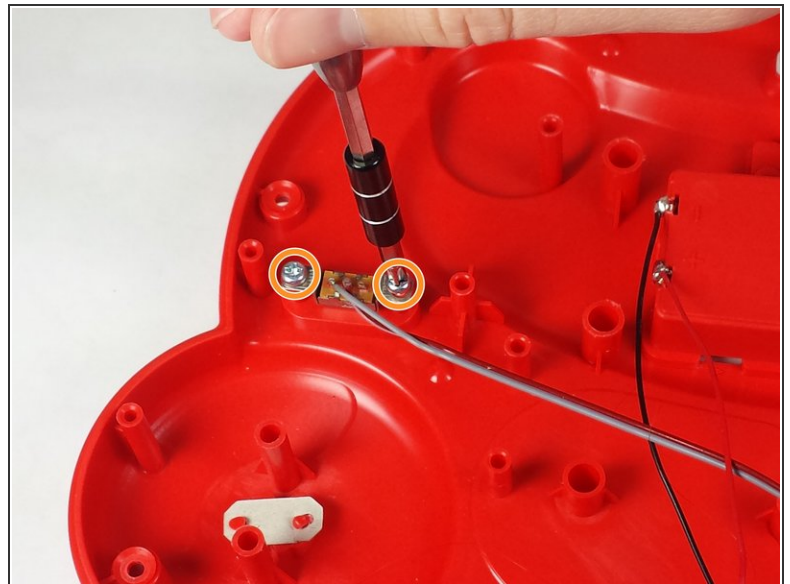
- Gently pull up on the rear panel.
- ⚠ Be careful not to pull on the wire connections.
- Rest the laptop open on the table.

Step 5 — Volume Switch



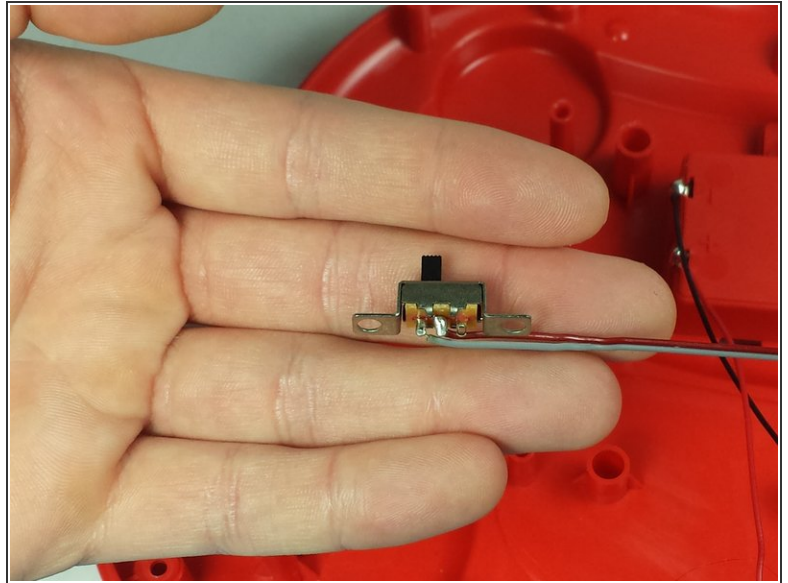
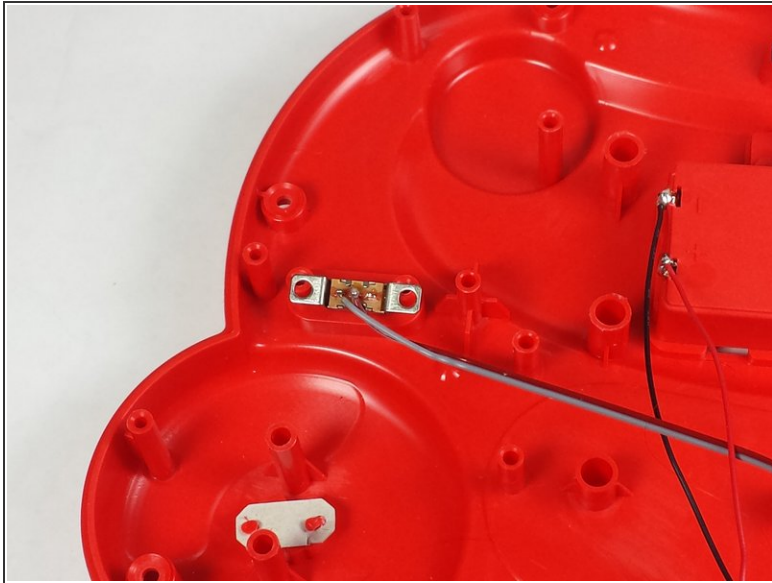
- Flip your device so the bottom panel is facing up.

Step 6



- Use a Phillips #2 screwdriver to remove the two 7.7mm screws on the volume switch.

Step 7



- Remove the volume switch.

⚠ Be careful not damage the wiring.

To reassemble your device, follow these instructions in reverse order.