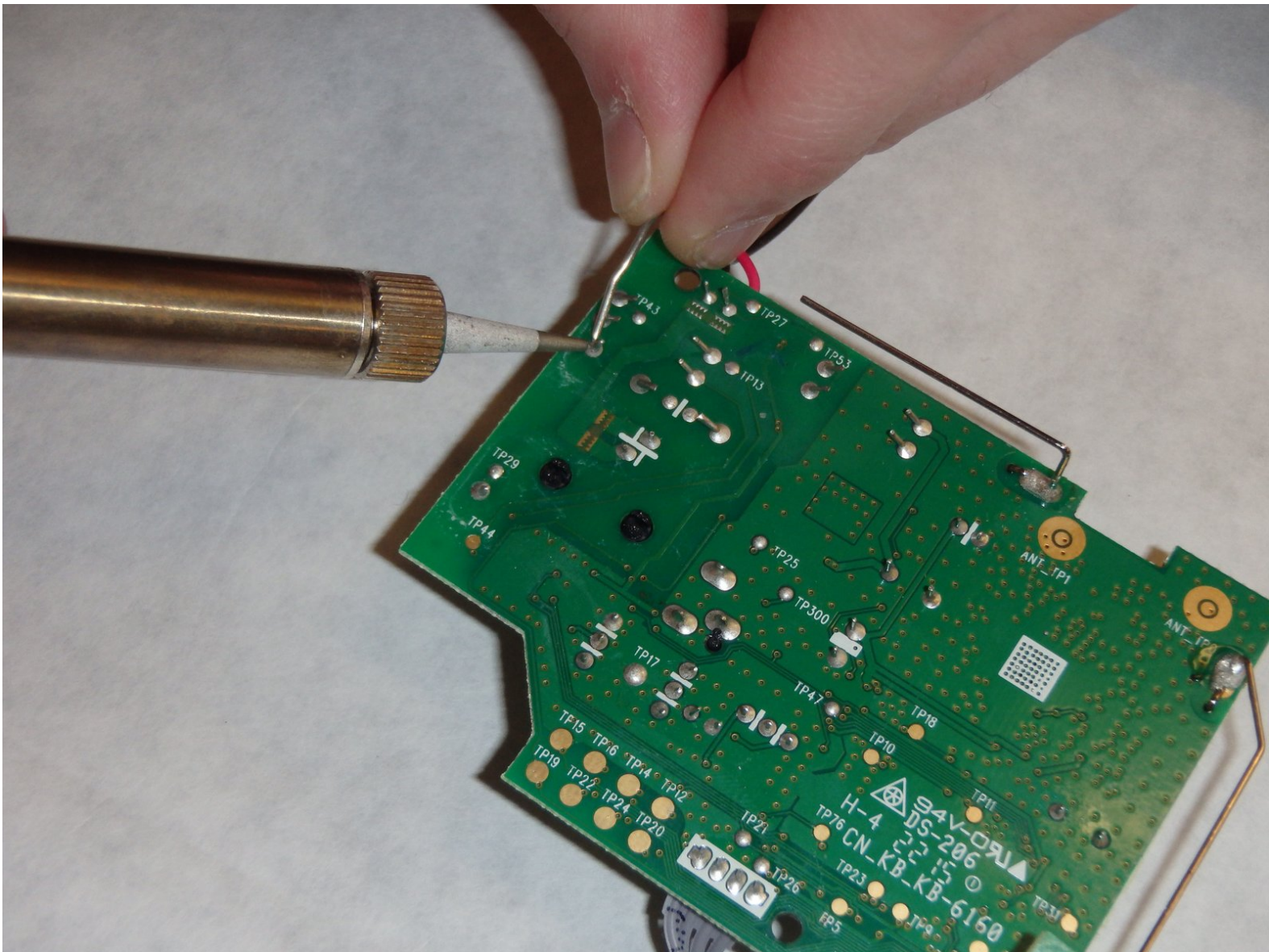




VTech CS6719-2 Base Fuse Replacement

This is a guide to replace the fuse on the circuit board located inside the main base of the Vtech CS6719-2.

Written By: Nick Boyd



INTRODUCTION

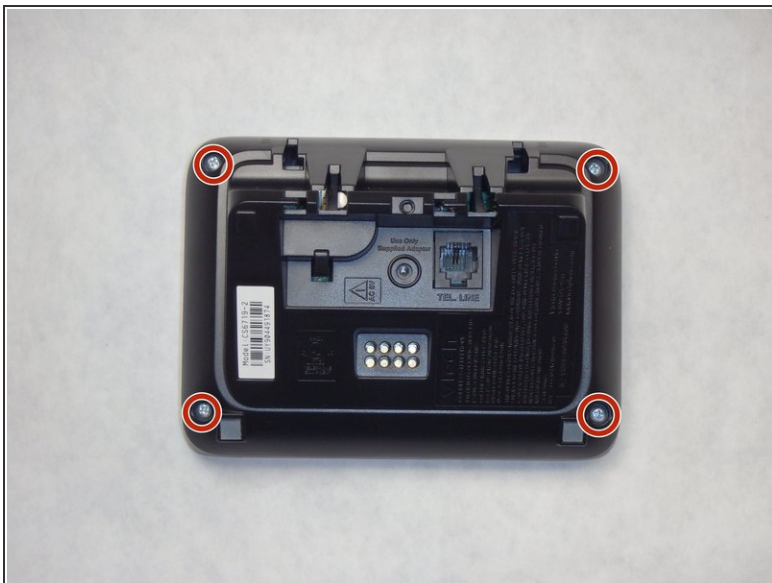
During this guide, the base will need to be disassembled and the board flipped over to desolder the fuse connection.



TOOLS:

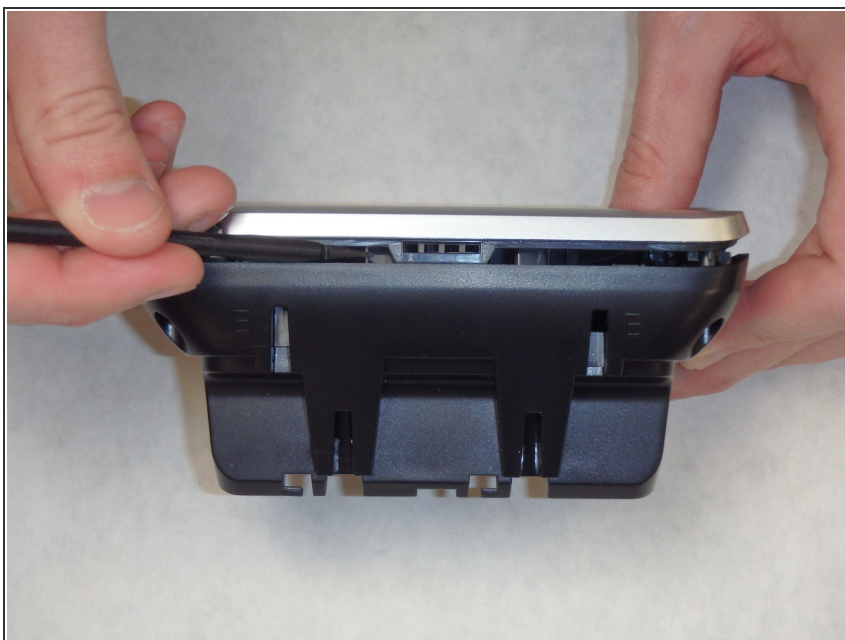
- [Soldering Iron](#) (1)
 - [Phillips #0 Screwdriver](#) (1)
 - [Heavy-Duty Spudger](#) (1)
-

Step 1 — Base



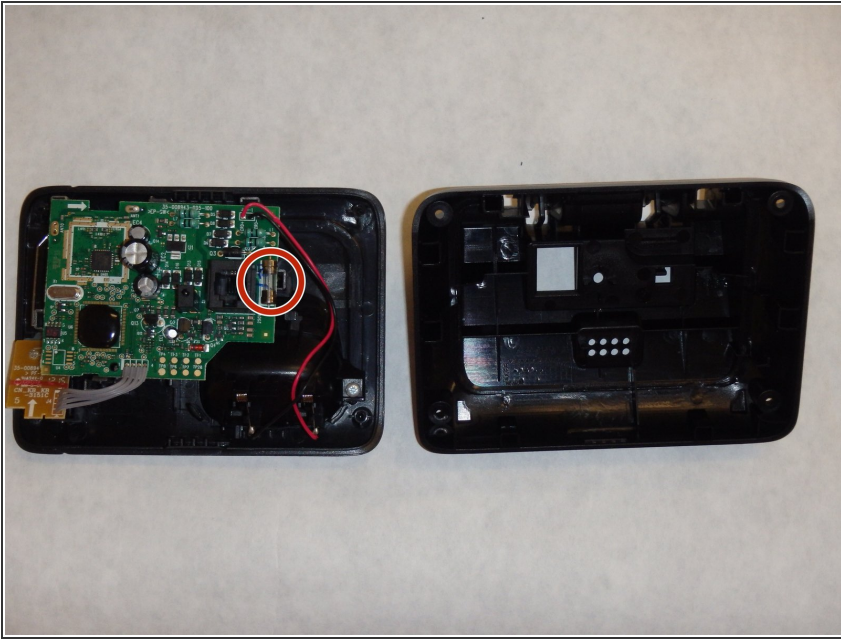
- Remove the four Phillips #0 screws (9.4mm) located at the bottom of the phone on the back side of the base.

Step 2



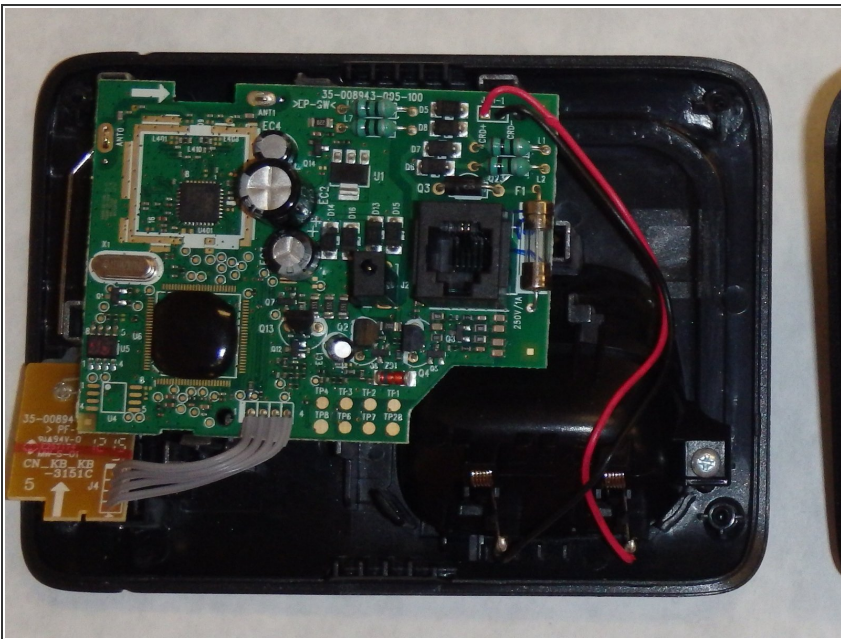
- Use the spudger to separate the bottom from the top.
- ⓘ There are two clips, located top and bottom, that you have to compress with the spudger.

Step 3 — Base Fuse



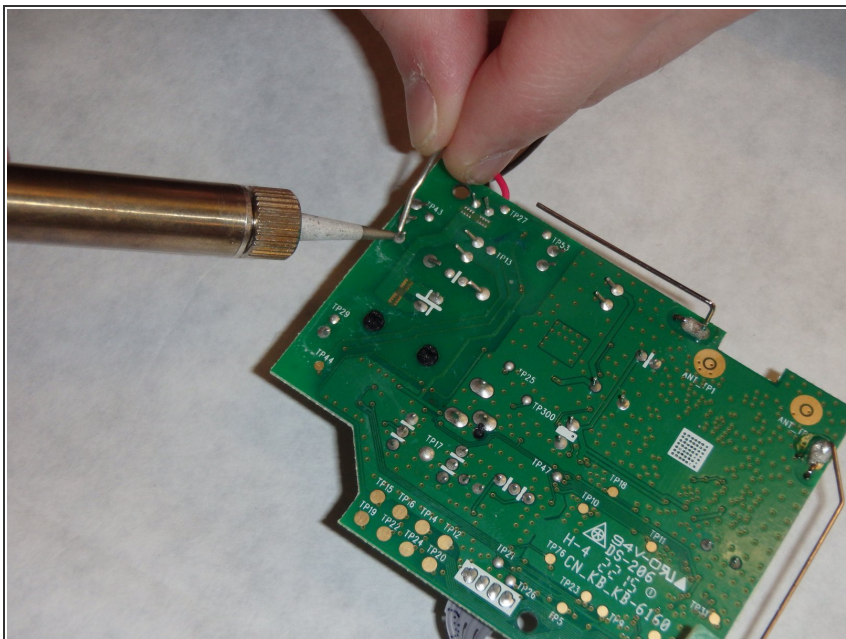
- Locate the fuse.

Step 4



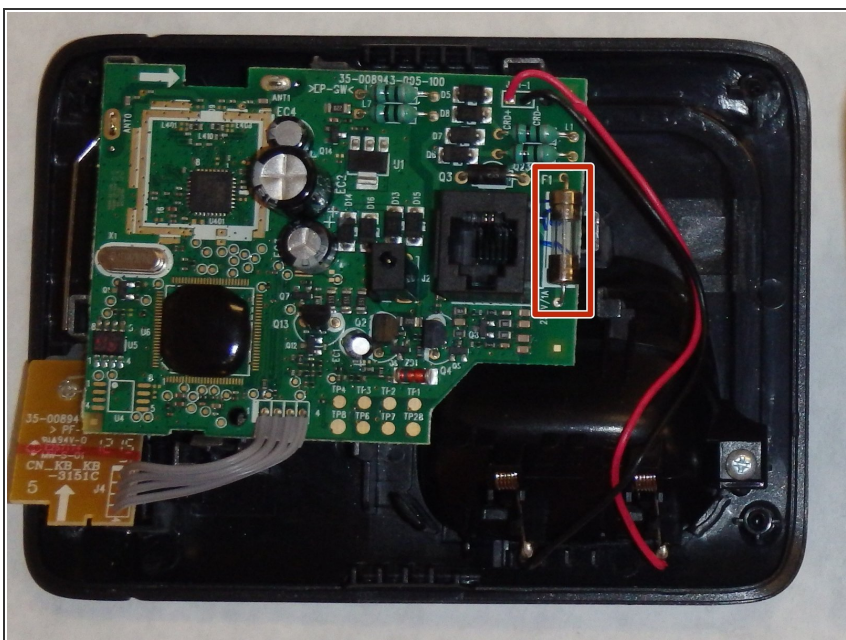
- Flip the board over.
- ⓘ Remember where the fuse is located.

Step 5



- Refer to the guide on [How To Solder and Desolder Connections](#).

Step 6



- Flip the board back over and remove the fuse.

To reassemble your device, follow these instructions in reverse order.