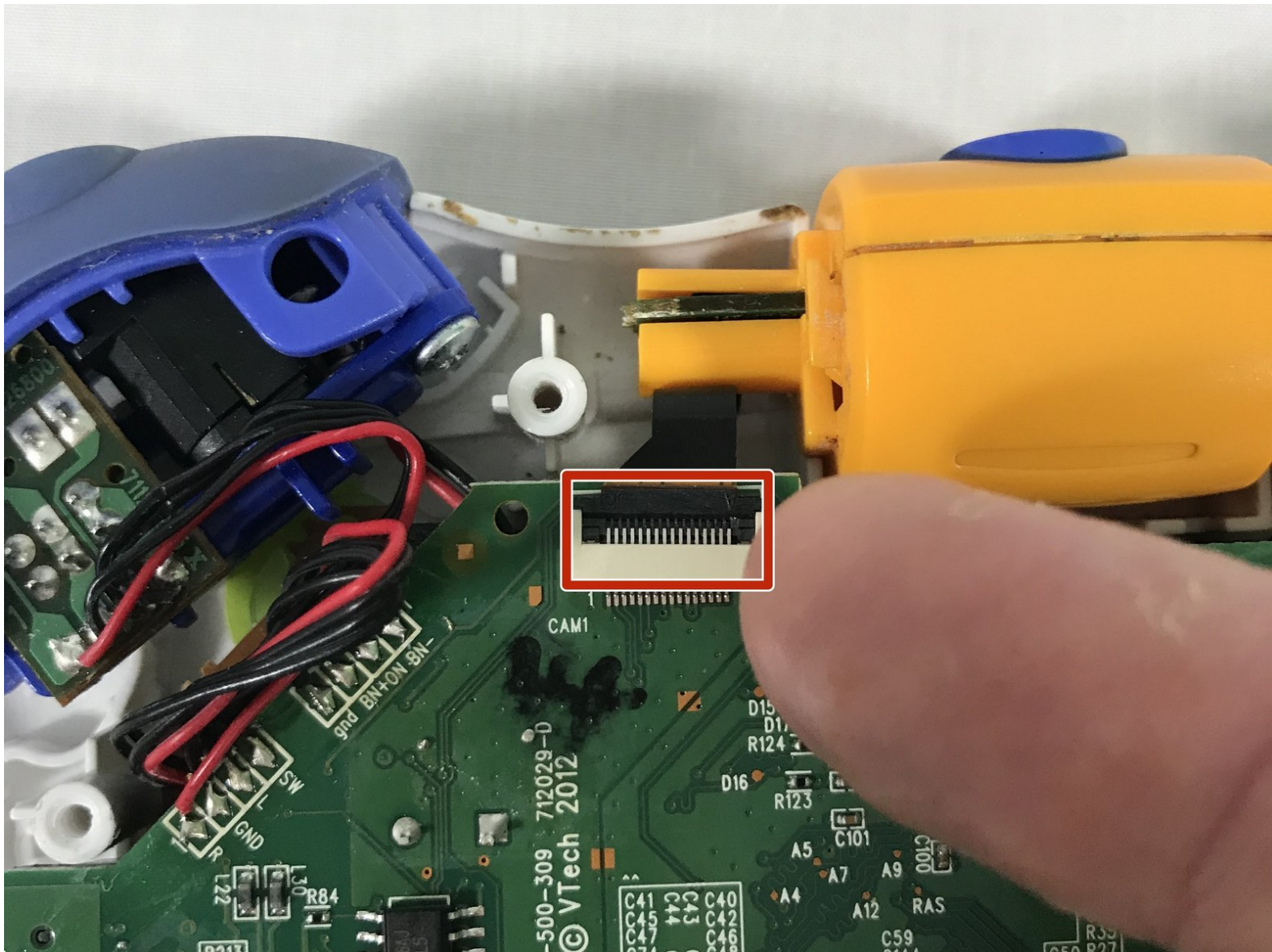




VTech InnoTab 2 Camera Replacement

Replace a faulty camera for your VTech InnoTab 2.

Written By: Roberto Valdes



INTRODUCTION

Tired of taking pictures with poor quality on your VTech InnoTab 2. Then follow our quick guide to walk you through replacing a faulty camera on your VTech InnoTab 2.

TOOLS:

- [iFixit Opening Tools](#) (1)
 - [JIS #0 Screwdriver](#) (1)
-

Step 1 — Battery



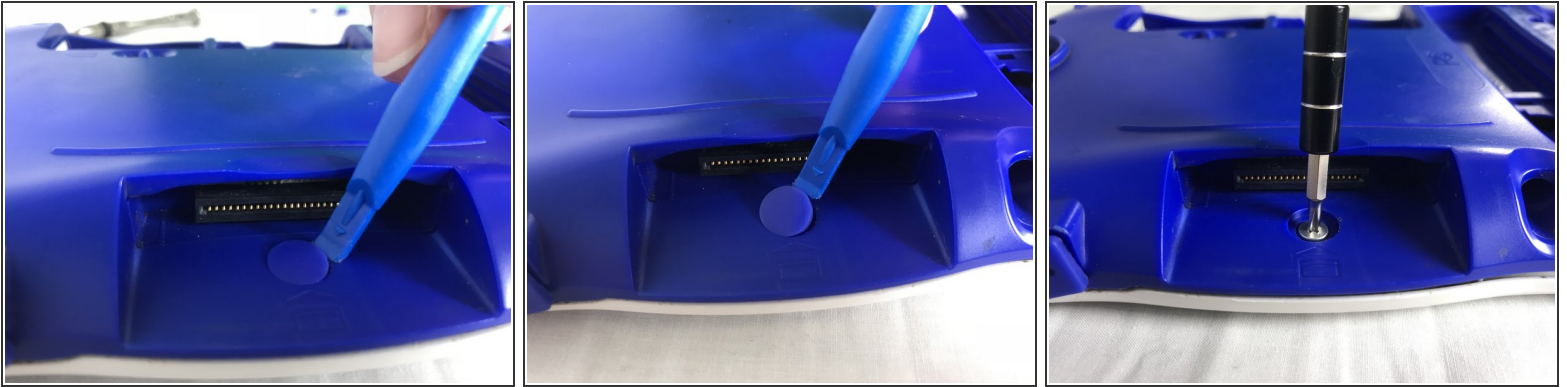
- Apply slight pressure and slide the button above the battery cabinet to the right to open.
 - Remove battery cabinet cover by sliding away from the center of device.
- i** This device requires 4AA batteries to function without the AC adaptor.

Step 2 — Back Panel




- Remove all nine plastic caps from the back of the device using the plastic opening tool.
- !** These covers are made of hard plastic so they may be difficult to remove.

Step 3



- Remove the hard rubber tab located by the cartridge slot using the plastic opening tool.


 Be careful not to apply excessive force.

- Once the rubber tab is removed unscrew the single 7 mm screw using a J0 screwdriver.

Step 4



- Remove all ten 7mm screws from the back panel of the device using a JO bit screwdriver.

 Do not use excessive force while removing the screws to prevent damaging the plastic case.

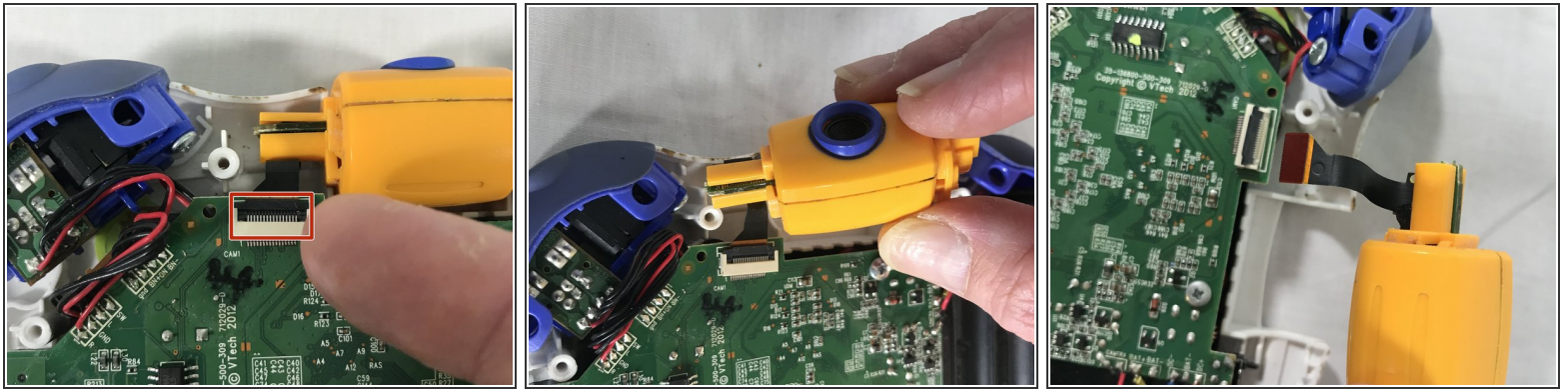
Step 5



- Using the plastic opening tool, detach the back plate from the front piece.

- ⚠ Do not use excessive force. If the back plate does not gently come on double check that all screws were removed.
- ⓘ Once the back panel is removed, you will be able to see the motherboard and other components within the device.

Step 6 — Camera



- Using the tip of your finger, carefully pull the clip upwards to release the camera connection from the motherboard.
- ⓘ The connection to the camera is located on top side of the devices motherboard.
- ⚠ Pulling the camera while the connection to the motherboard is still intact can cause damage to the circuit board.
- Attach the replacement camera and lower the latch until a click sound can be heard.

To reassemble your device, follow these instructions in reverse order.