



VTech InnoTab Max Camera Replacement

This guide will show how to replace the camera in the VTech InnoTab Max.

Written By: Jacob Schioppo



INTRODUCTION

This guide will show how to replace the camera in the Vtech InnoTab Max.



TOOLS:

- [J1 Screwdriver Bit](#) (1)
 - [iFixit Precision Bit Driver](#) (1)
 - [iFixit Opening Tools](#) (1)
 - [Magnetic Project Mat](#) (1)
-

Step 1 — Cover



- Remove all screw caps from the back panel using a metal spudger.

Step 2



- Next remove all of the now uncovered screws.

i If there is a cartridge in the device make sure to remove it.

Step 3



- Now that all of the screws have been removed, pry the back cover off using a plastic opening tool.

Step 4



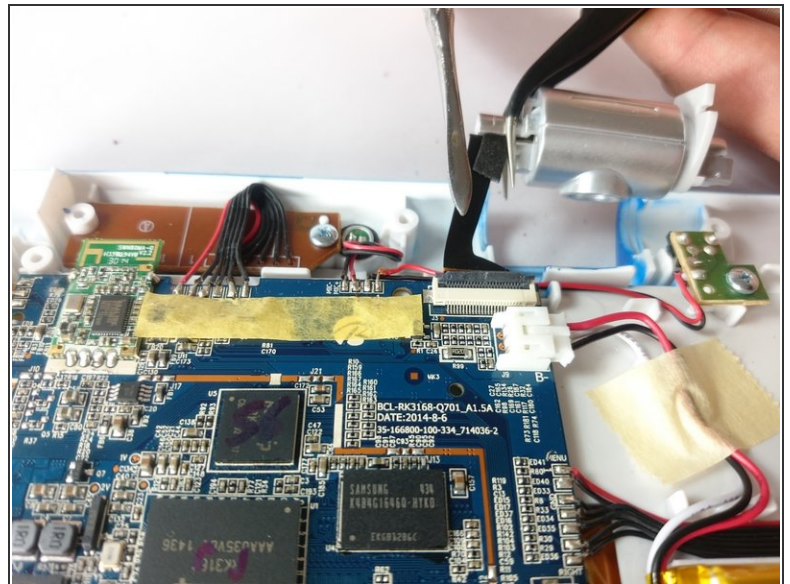
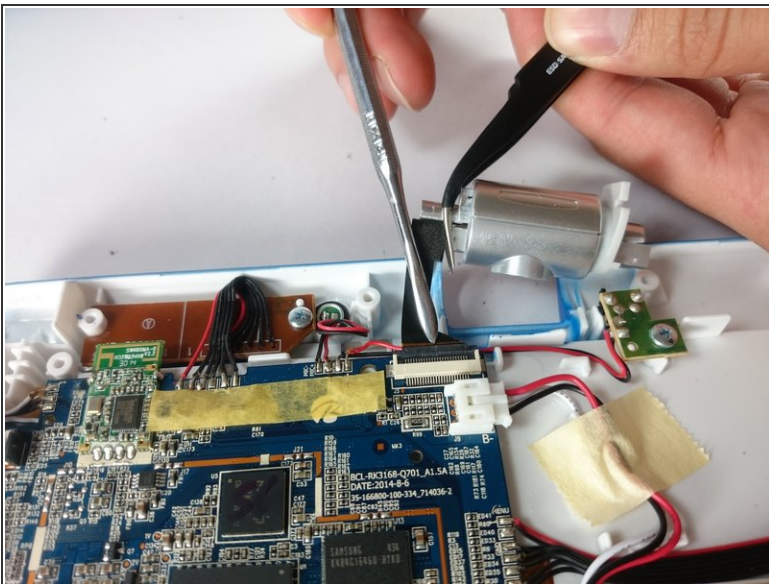
- Here you can see the back cover has been fully removed and you can now access the front cover.
- To remove the front cover, remove the springs holding the pictured brackets in place, then pull it away.

Step 5 — Camera




- The camera is not held down by anything, so simply remove it from it's spot to prepare for unplugging it.

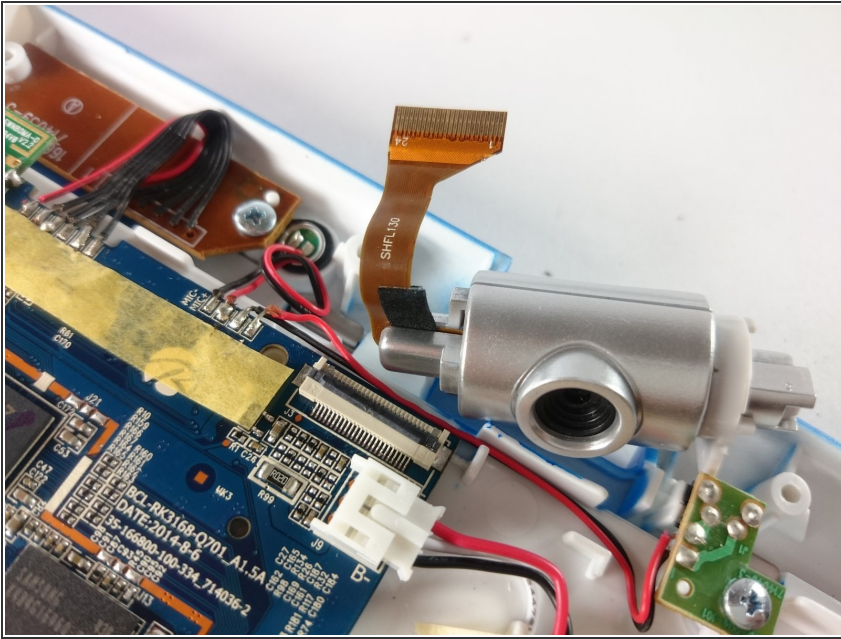
Step 6



- Carefully remove the wire connecting the camera to the motherboard, using a tool to grip it if needed.

 Be careful to only pull from the end of the connector (closest to the motherboard), as the strip is easy to tear.

Step 7



- The camera is now removed completely removed from the device.

To reassemble your device, follow these instructions in reverse order.