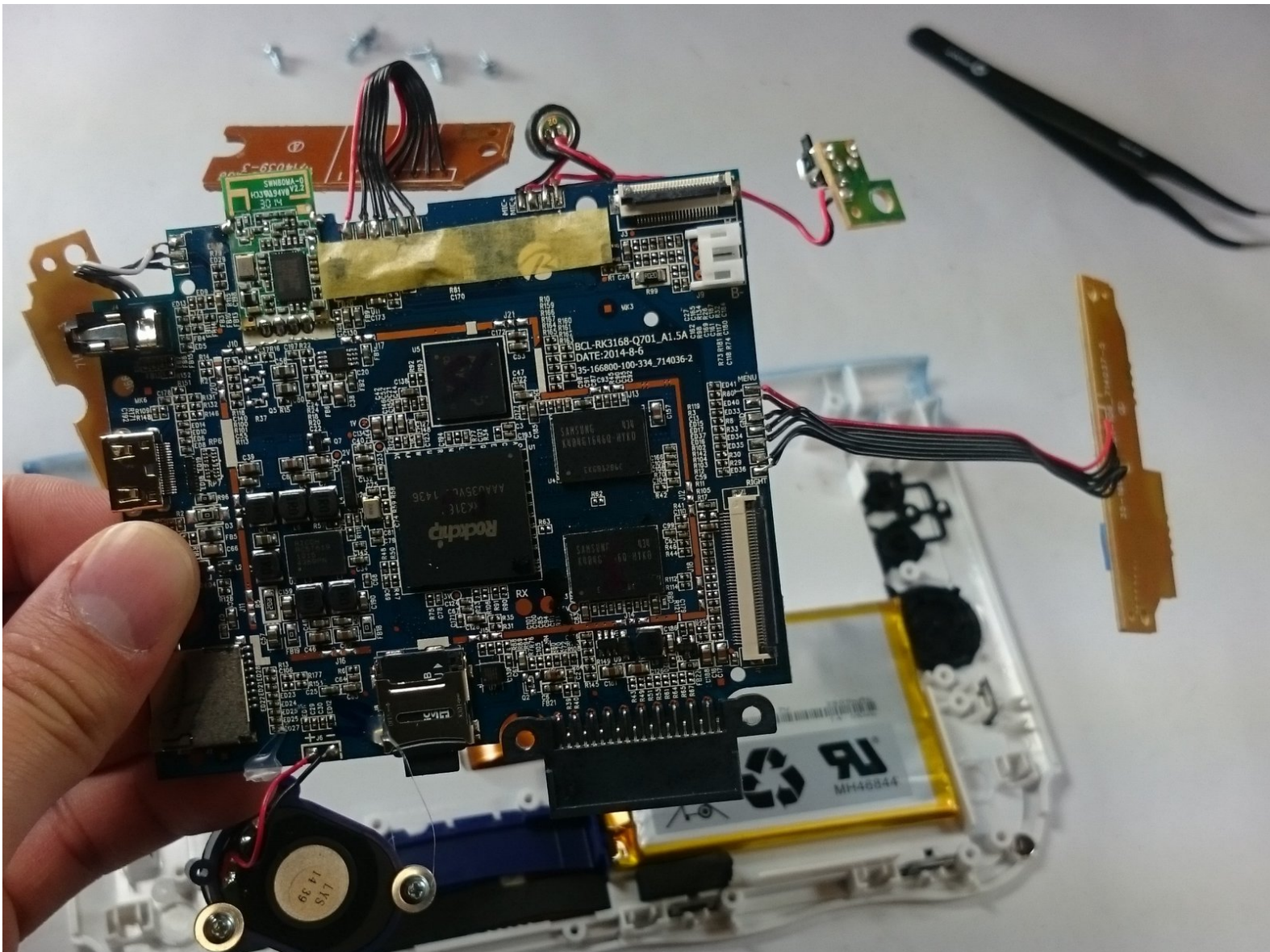




# VTech InnoTab Max Motherboard Replacement

This guide will show how to replace the motherboard in the VTech Innotab Max.

Written By: Jacob Schioppo



# INTRODUCTION

This guide will show how to replace the motherboard in the VTech Innotab Max.



## TOOLS:

- [J1 Screwdriver Bit](#) (1)
  - [iFixit Precision Bit Driver](#) (1)
  - [iFixit Opening Tools](#) (1)
  - [Magnetic Project Mat](#) (1)
-

## Step 1 — Cover



- Remove all screw caps from the back panel using a metal spudger.

## Step 2



- Next remove all of the now uncovered screws.

**i** If there is a cartridge in the device make sure to remove it.



### Step 3



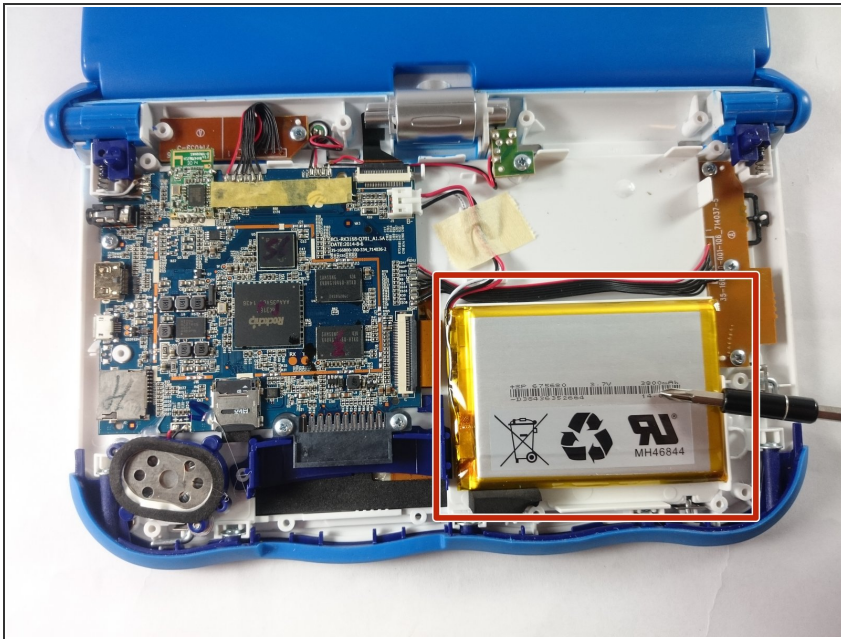
- Now that all of the screws have been removed, pry the back cover off using a plastic opening tool.

### Step 4



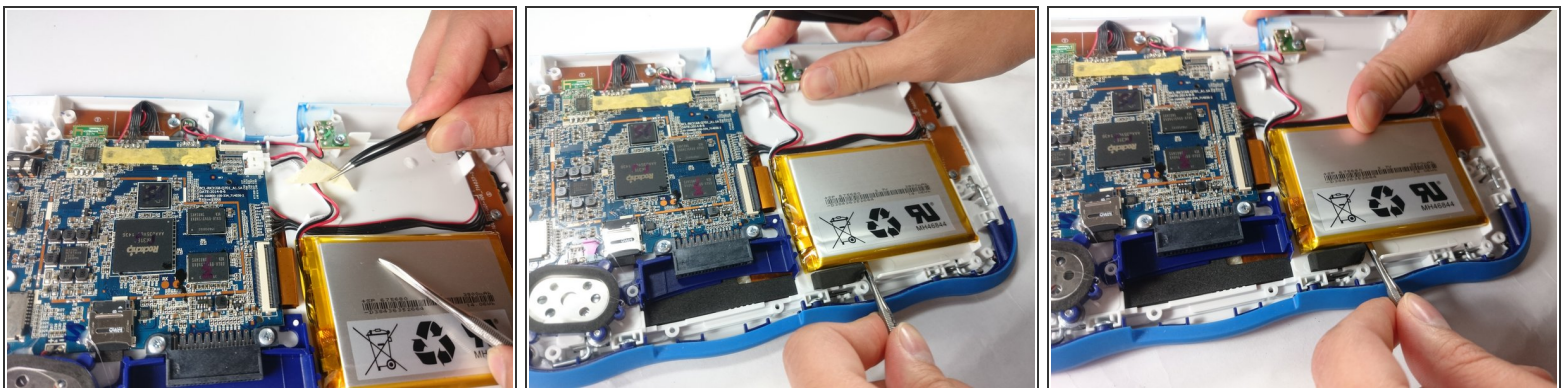
- Here you can see the back cover has been fully removed and you can now access the front cover.
- To remove the front cover, remove the springs holding the pictured brackets in place, then pull it away.

## Step 5 — Battery



- Once the back cover is removed the battery will be located in the bottom right as you can see in the image to the right.

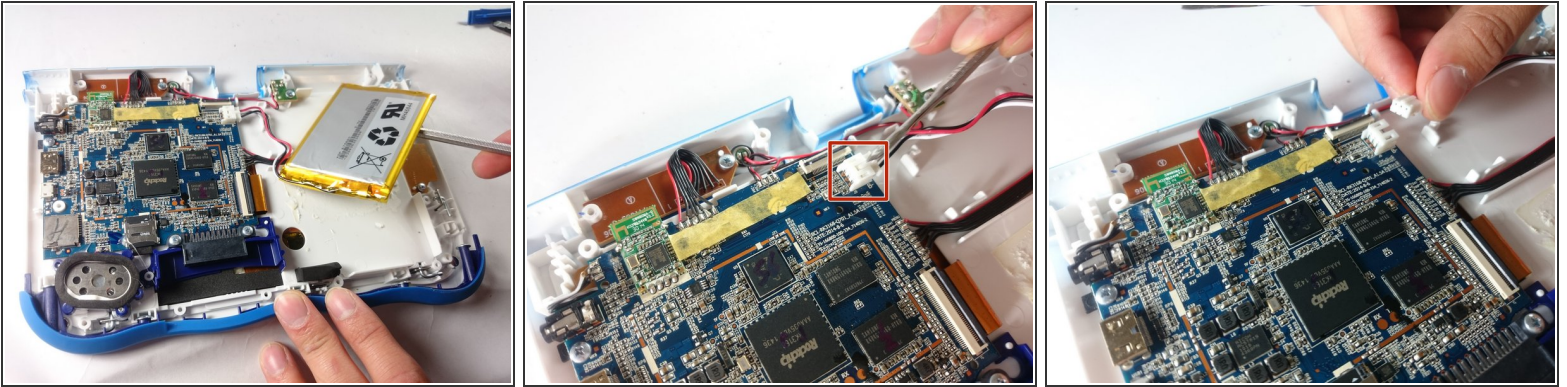
## Step 6



- Remove the tape holding down the wires, and carefully pry the battery off of the base of the device.
- ⓘ Pry carefully to avoid damaging the battery. The battery may start to bend slightly, this is normal and not a cause for concern.
- ⚠ It is best to use a plastic card or nylon spudger to remove the battery. Metal tools can puncture a battery, potentially causing a fire.

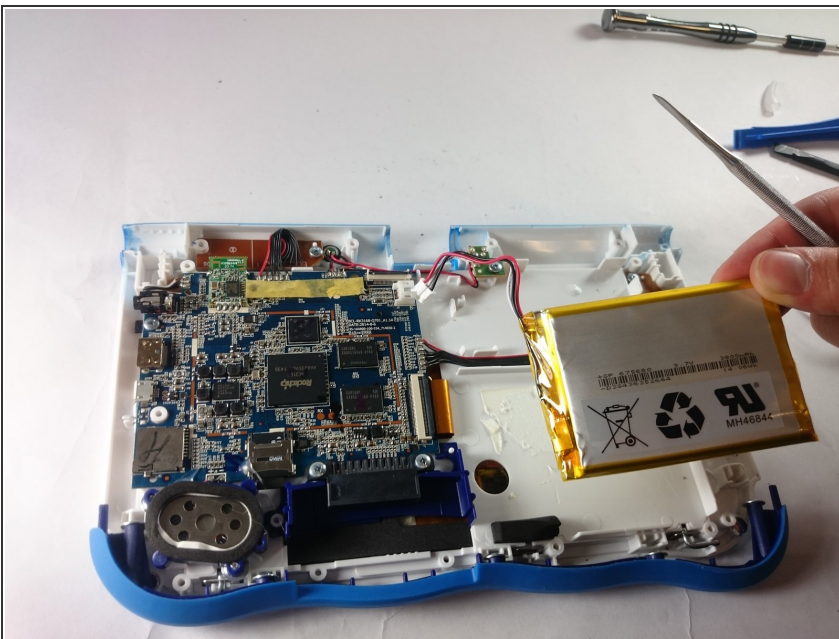


## Step 7



- Now that the battery is free to be moved, unplug the wire connecting the battery to the motherboard.

## Step 8



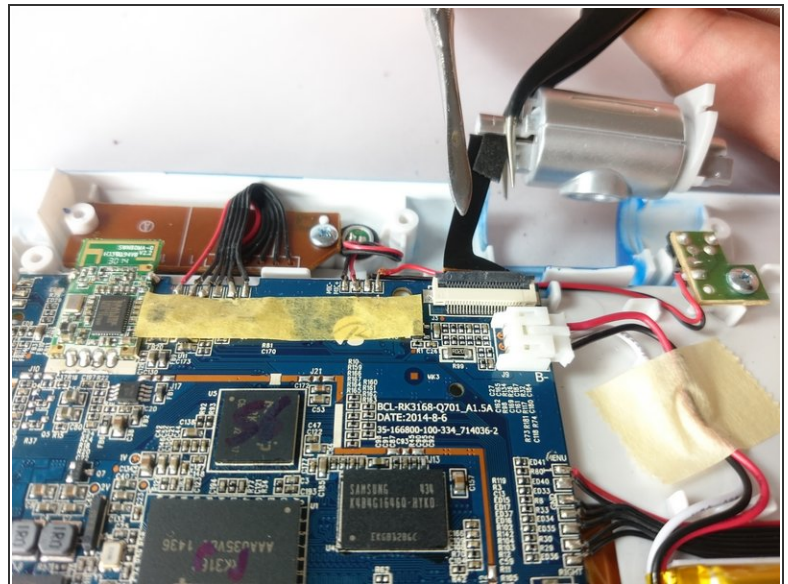
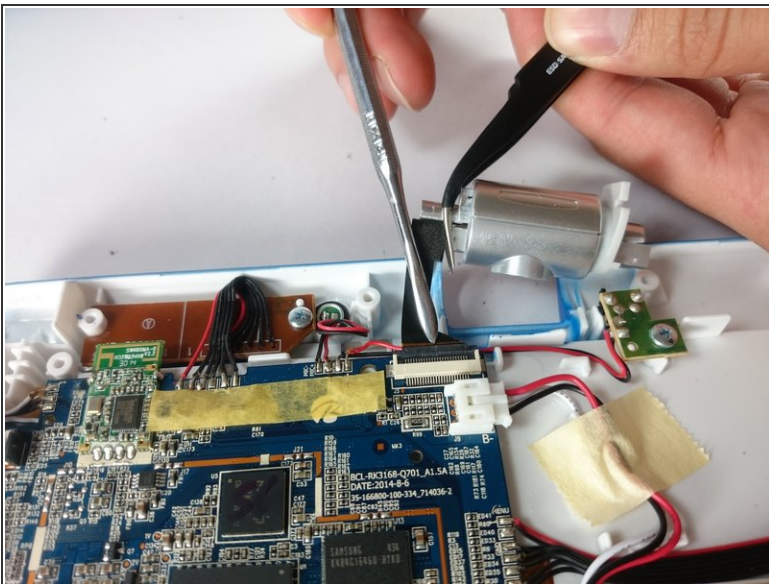
- The battery is now fully disconnected.

## Step 9 — Camera



- The camera is not held down by anything, so simply remove it from it's spot to prepare for unplugging it.

## Step 10

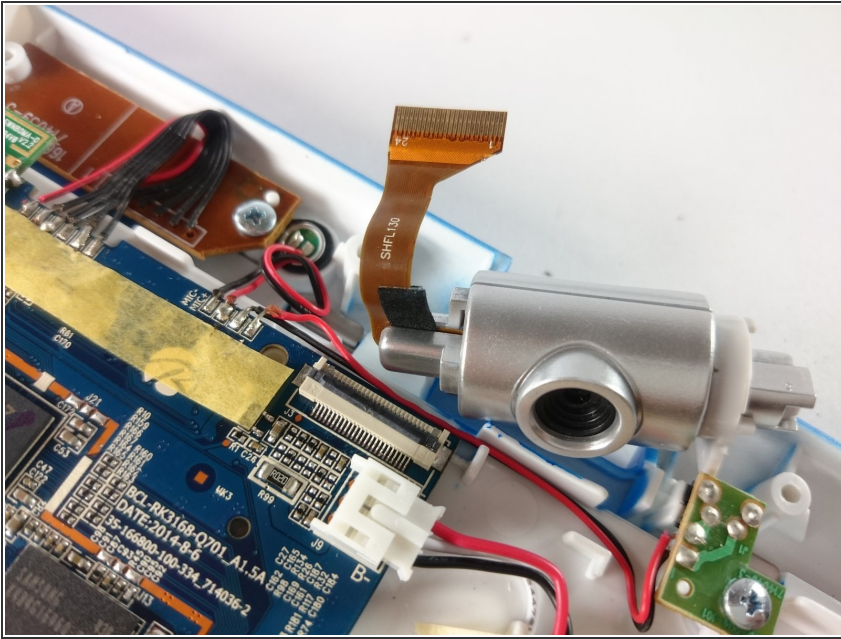


- Carefully remove the wire connecting the camera to the motherboard, using a tool to grip it if needed.

⚠ Be careful to only pull from the end of the connector (closest to the motherboard), as the strip is easy to tear.

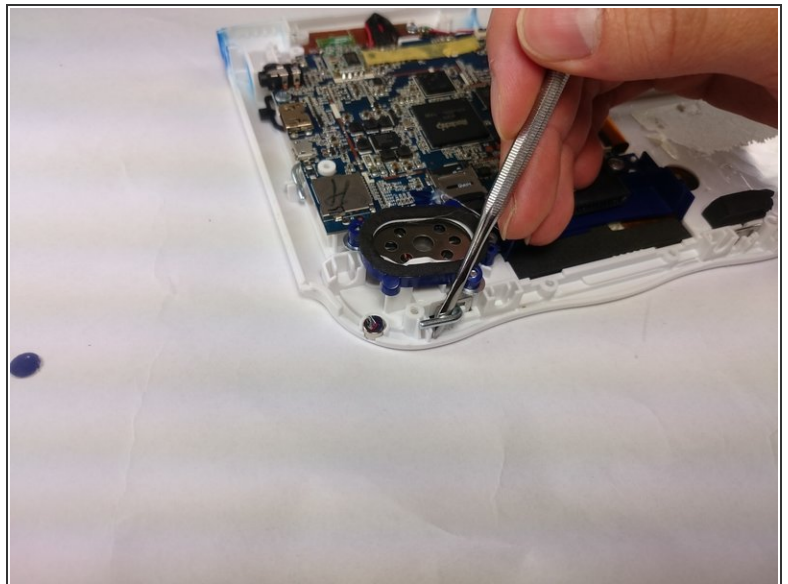
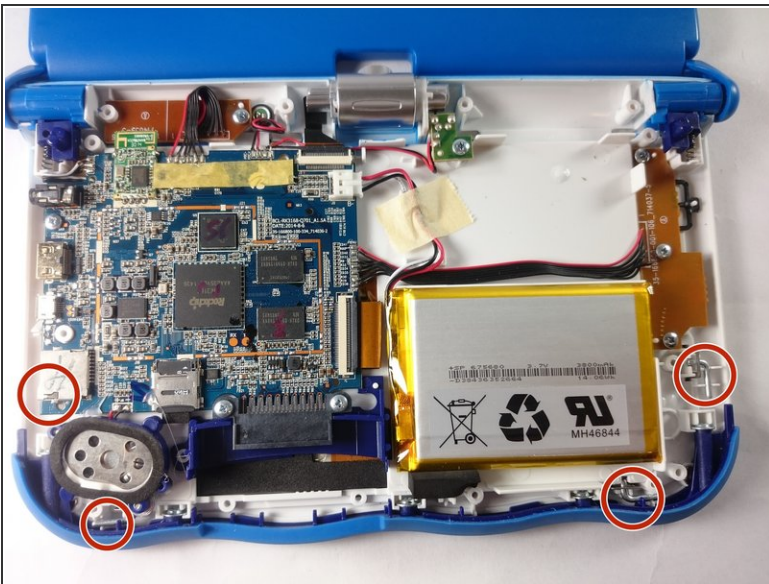


## Step 11



- The camera is now removed completely removed from the device.

## Step 12 — Screen



- In order to unlock the screen you need to remove the 4 pins that can be seen in the picture.
- To remove simply just turn and pull them out. Use a metal or nylon spudger if they are too small to grip.

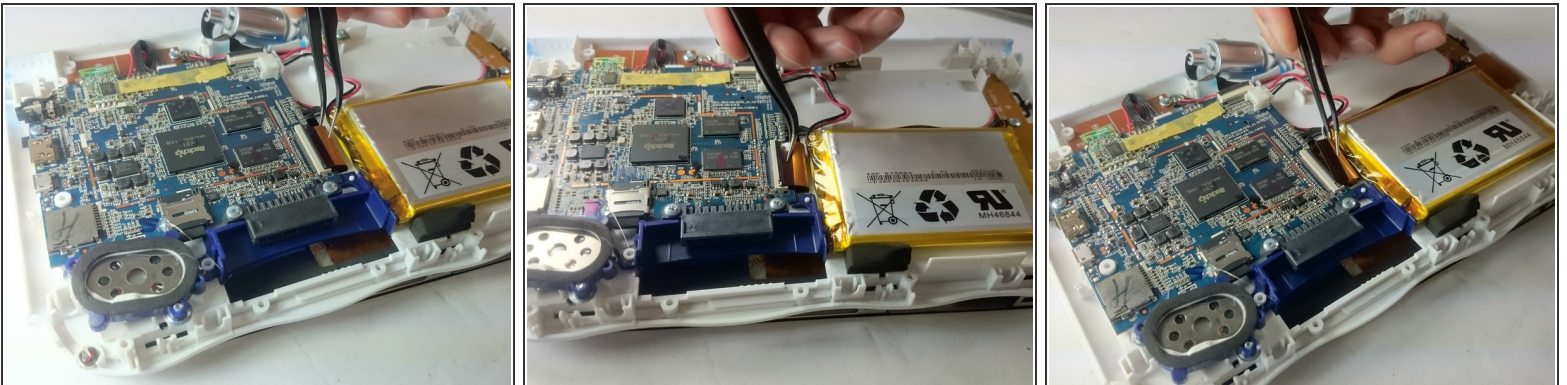


## Step 13




- Once the pins are removed the screen should be loose from the frame and only connected by the brown film pictured.

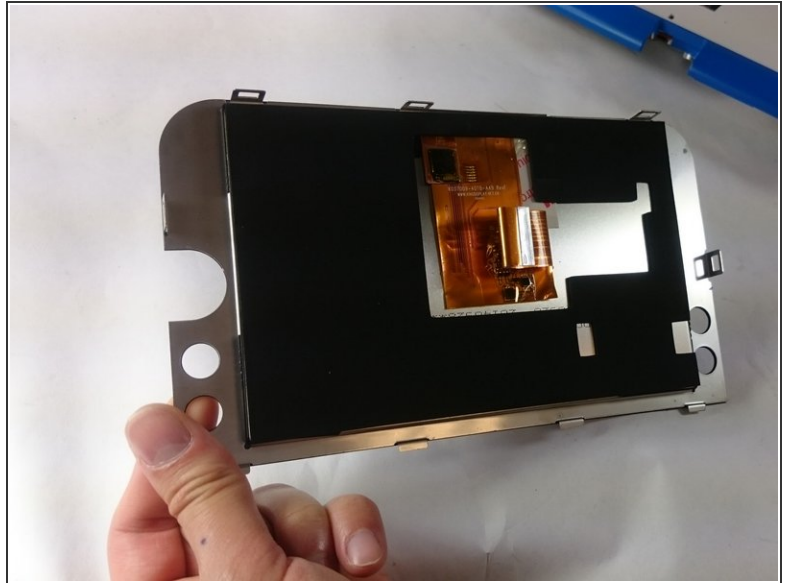
## Step 14



- In order to completely remove the screen you need to unclip the film from the motherboard by simply using a pair of tweezers and gently pulling.

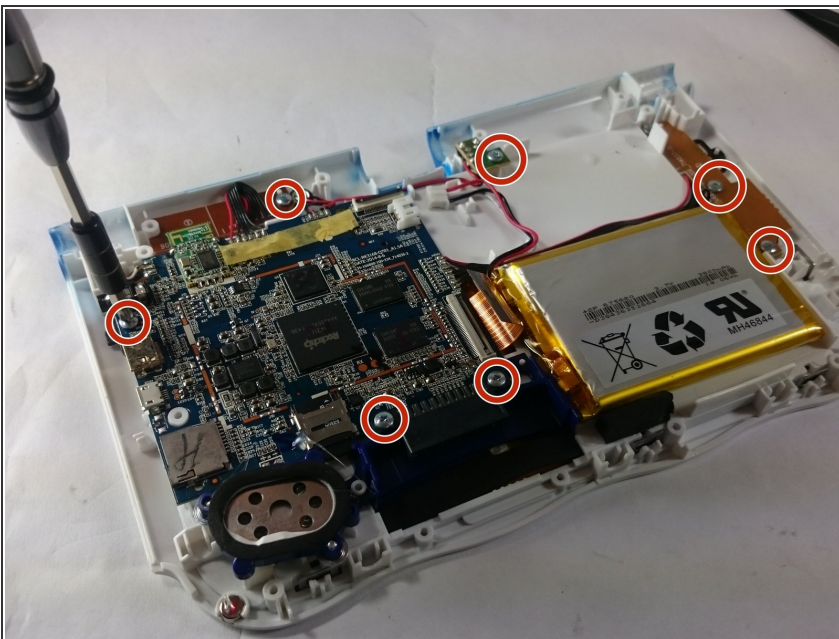
 Be careful not to tear the film when pulling.

## Step 15



- Once unclipped from the motherboard the screen should be entirely free from the device

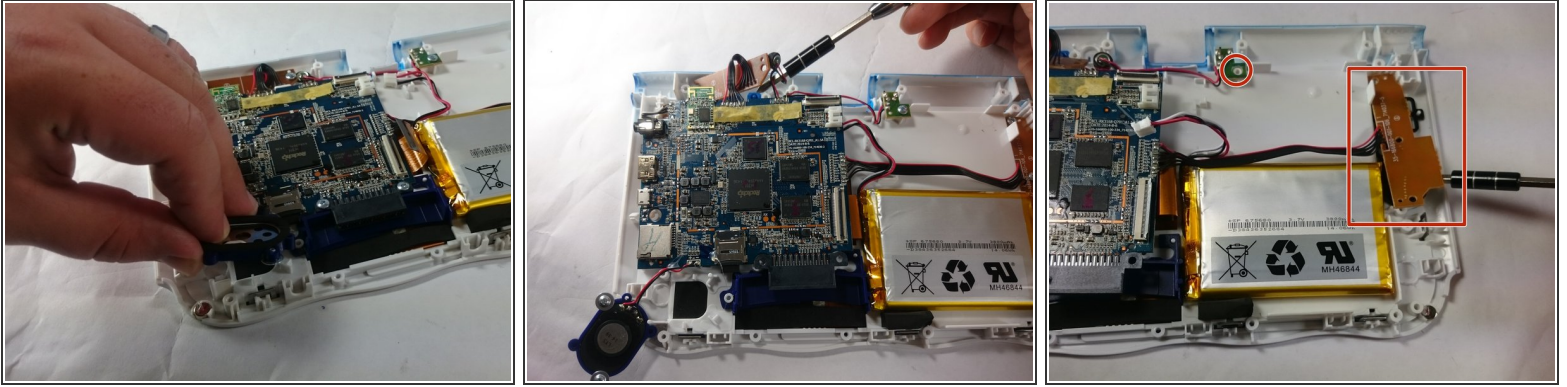
## Step 16 — Motherboard



- Remove the circled screws that are holding down the motherboard and components.
- ⓘ Every component that will need to be unscrewed will have wires running to it from the motherboard. These wires will not be disconnected.



## Step 17

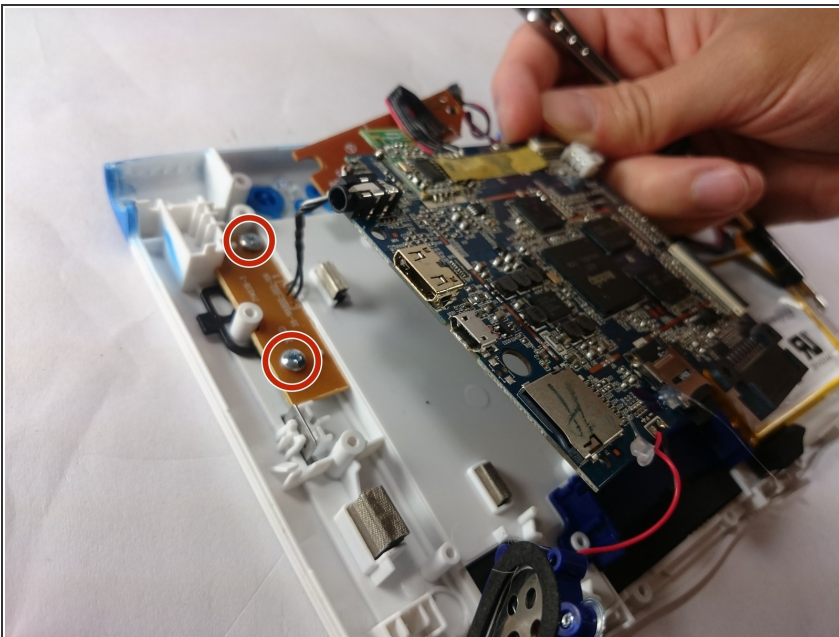


- With all of the screws out, lift up the speaker, the two visible bronze plates, and the small green chip at the top.

⚠ Do not try to disconnect any of the wires running to these devices, as you will not be able to reconnect them.

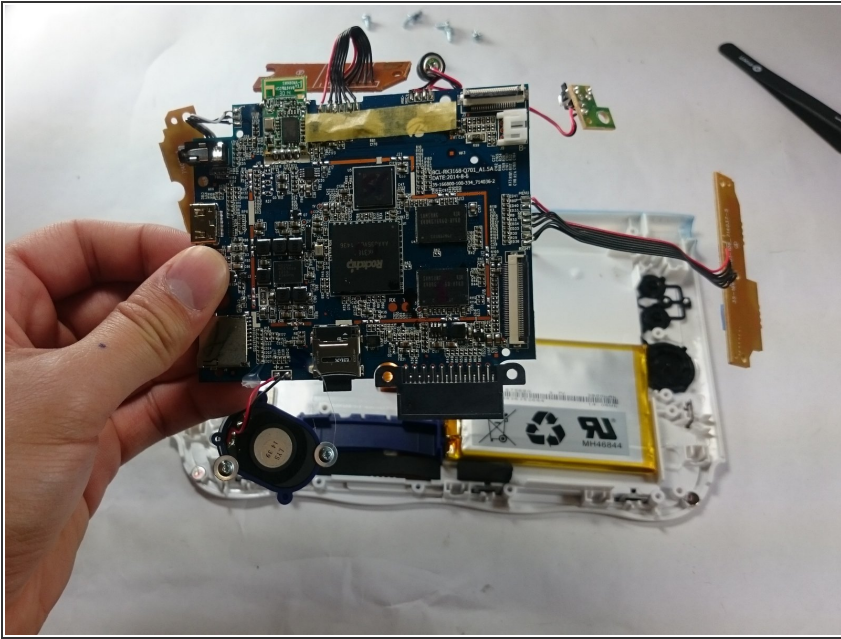
i All of these components can be located by following wires leaving the motherboard.

## Step 18



- With all of these components out of their place, lift up the motherboard to reveal one more bronze plate.
- Remove the screws holding down this plate, and remove it with the rest of the motherboard.

## Step 19



- All components should be free from the device, and you can now completely remove the motherboard.

To reassemble your device, follow these instructions in reverse order.