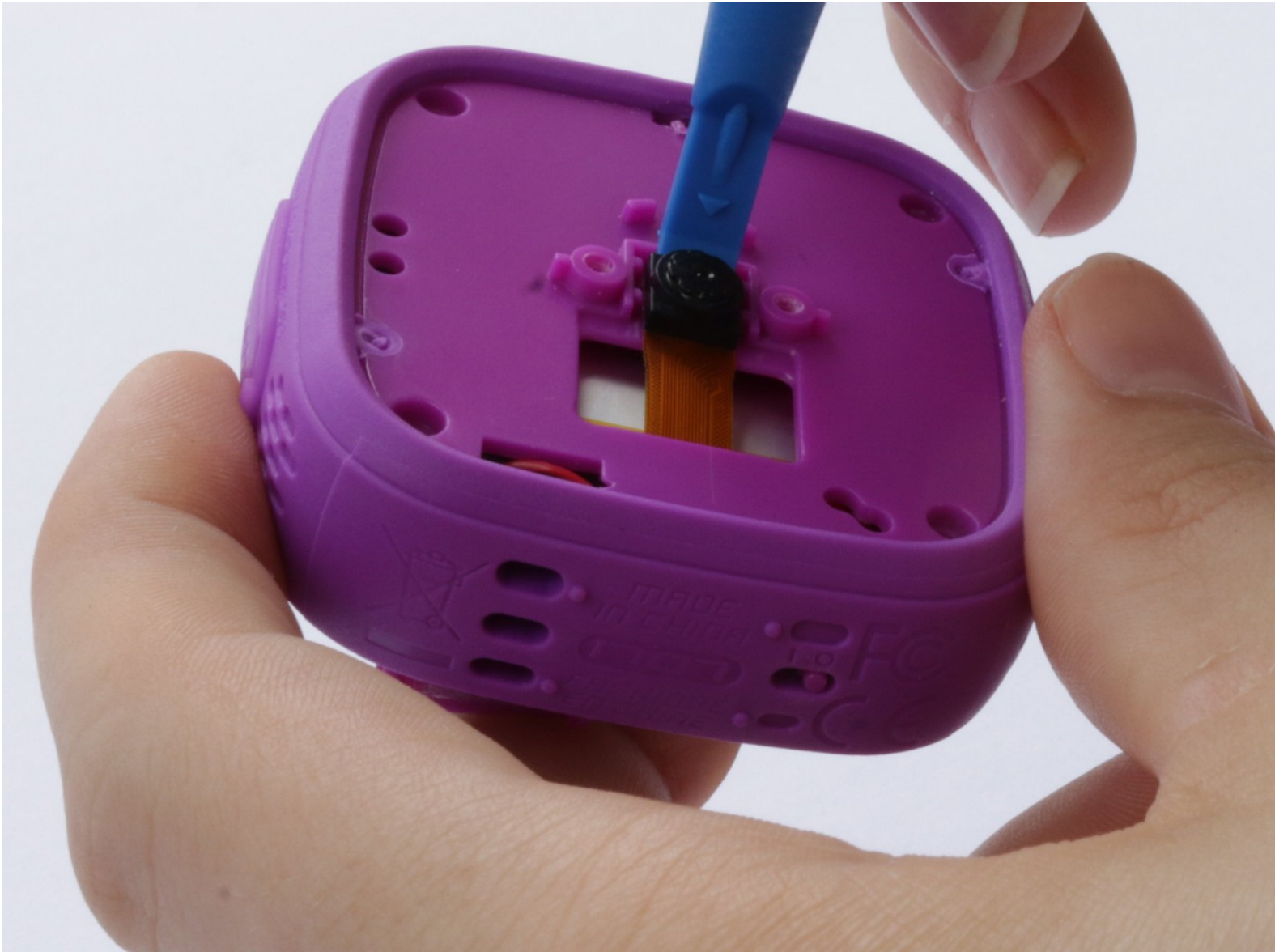




VTech Kidizoom Action Cam Lens Replacement

Use this guide to replace your broken camera lens so you can continue to take pictures clearly.

Written By: Anthony Teresi



INTRODUCTION

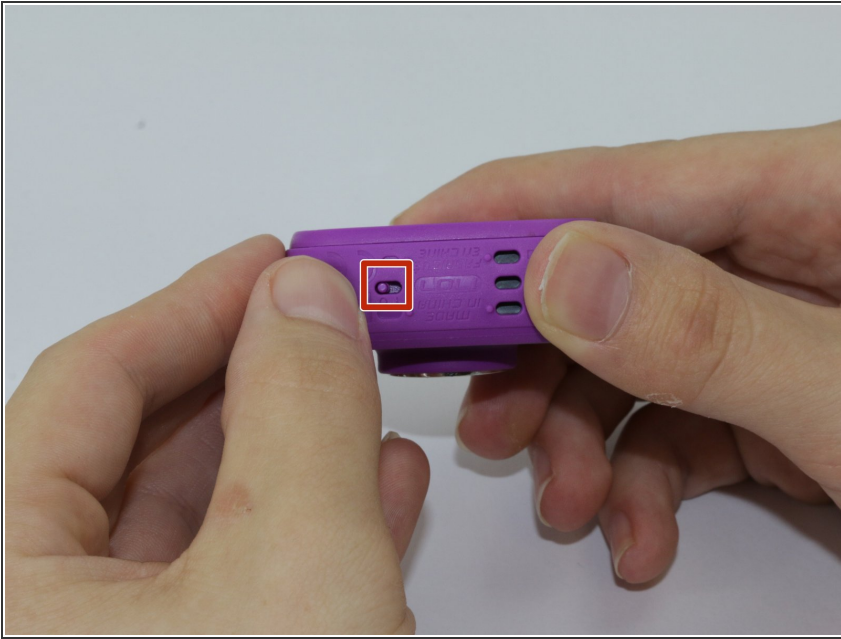
Exercise caution when removing the camera lens's connecting ribbon , as any excessive pulling can damage the motherboard. Otherwise, the camera lens is one of the quickest replacements, as it only requires light unscrewing, prying, and re-applying hot glue.



TOOLS:

- [Phillips #0 Screwdriver](#) (1)
 - [iFixit Opening Tools](#) (1)
 - [Glue Gun](#) (1)
 - [iOpener](#) (1)
-

Step 1 — Display Assembly



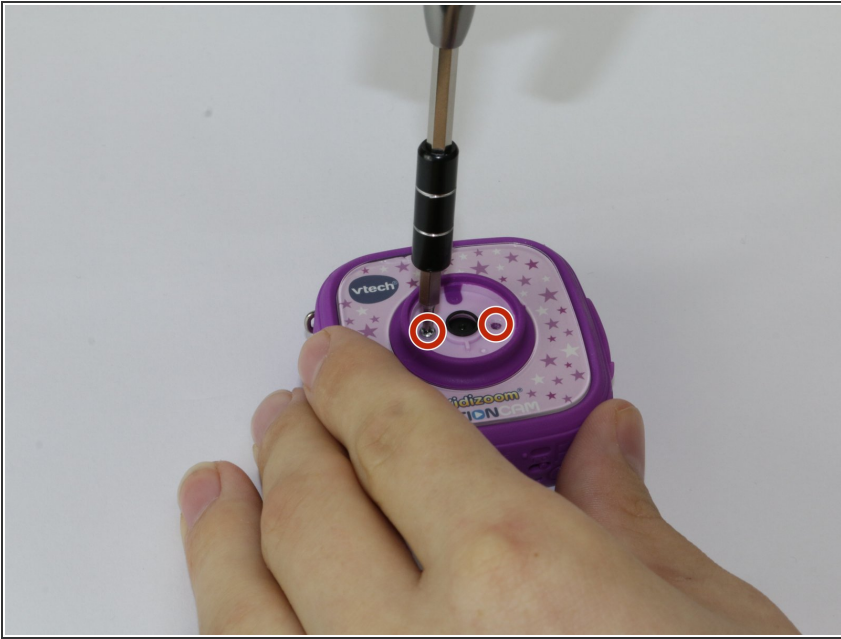
- ⚠ Make sure that the master power switch is set to the (O) position.

Step 2



- Using a plastic opening tool, gently pry off the circular plating over the camera lens.
- ⓘ The circular plating is held by a mild adhesive. It will not be necessary to replace this adhesive during the reassembly process.

Step 3



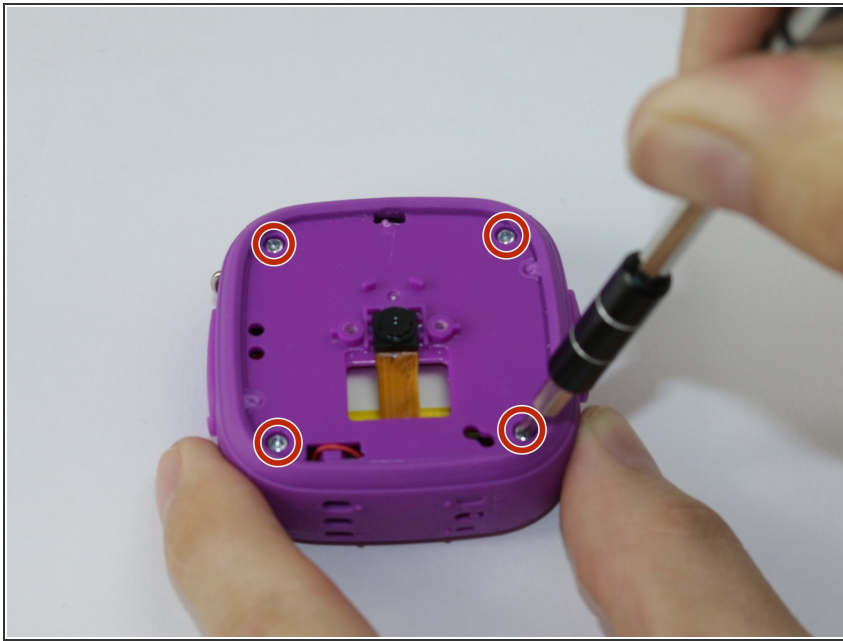
- Use a #0 screwdriver to remove the two 2.5mm Phillips head screws located on the second layer of plating.
- Remove the second layer of plating previously held down by the screws by gripping it with your fingers and pulling upward.
- ⓘ As there will be many screws being removed from the device, we recommend using a magnetic device such as the [iFixit Magnetic Project Mat](#).

Step 4



- Pry off the transparent plating and paper design using a plastic opening tool.

Step 5



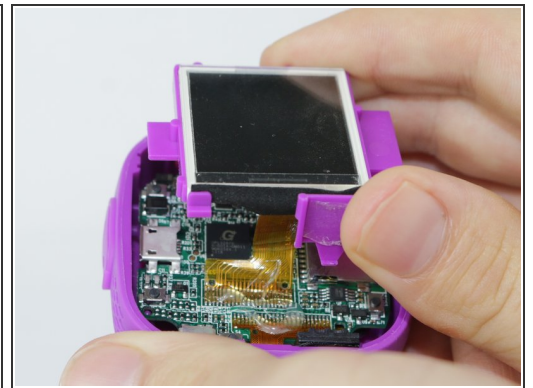
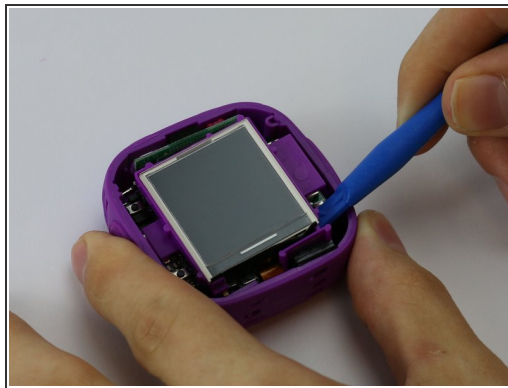
- Unscrew the (4) 2.5mm Phillips head screws from the third layer of plating using a #0 screwdriver.

Step 6



- Turn the camera around and gently remove the plating that surrounds the LCD screen by grasping it with your fingers and pulling away from the device.

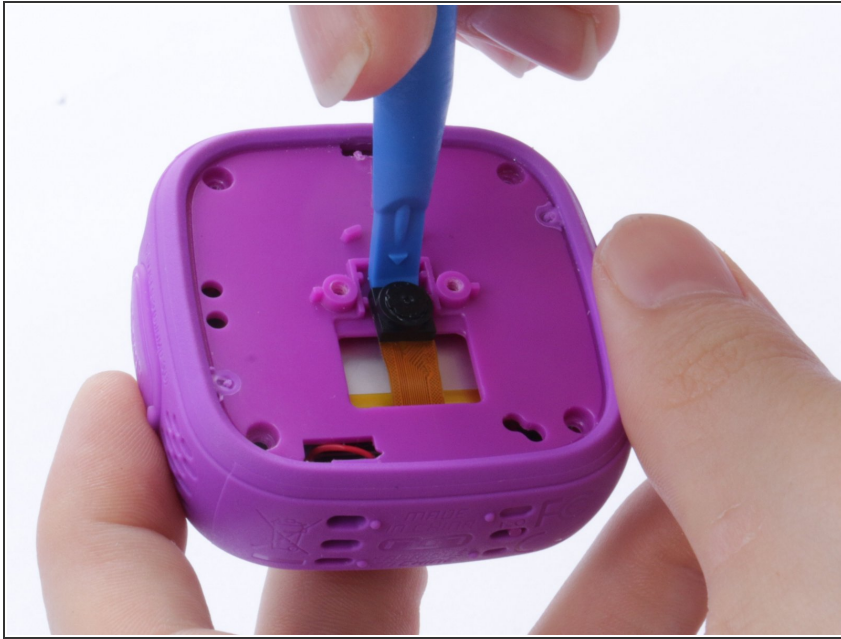
Step 7



- Use the plastic opening tool to lift the LCD screen, including the purple casing and set it aside, revealing the motherboard and connector ribbon.

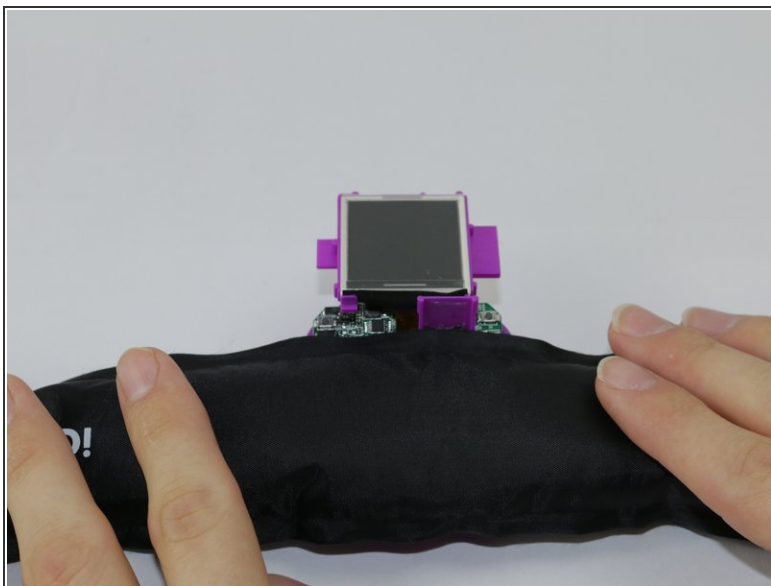
⚠ Exercise caution while performing this step, as any excessive pulling may tear the connector ribbon from the motherboard.

Step 8 — Lens



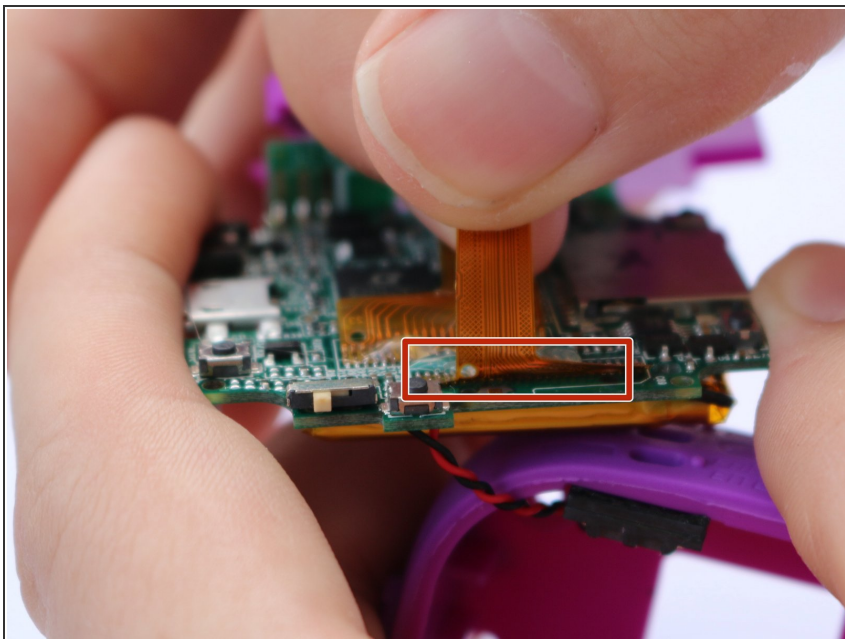
- Use the plastic opening tool to pry the lens from its holder.
- ⓘ This can be the final step before reassembling, but doing this before removing the ribbon makes the process easier.

Step 9



- Heat the iOpener tool, then press the iOpener tool onto the connectors to heat the glue on the connector ribbon.
- ⓘ If the iOpener tool is not available, use a hair dryer to heat the glue on the connector ribbon and then use a Q-tip dabbed in Isopropyl alcohol to dab the heated glue.

Step 10



- Gently peel the connector ribbon being held down by the heated glue until it is completely removed.
- ⚠ Be cautious of very hot glue when peeling the connector ribbon off of the motherboard
- When connecting the new camera lense, press the new connector ribbon to the original ribbon's position.

To reassemble your device, follow these instructions in reverse order.