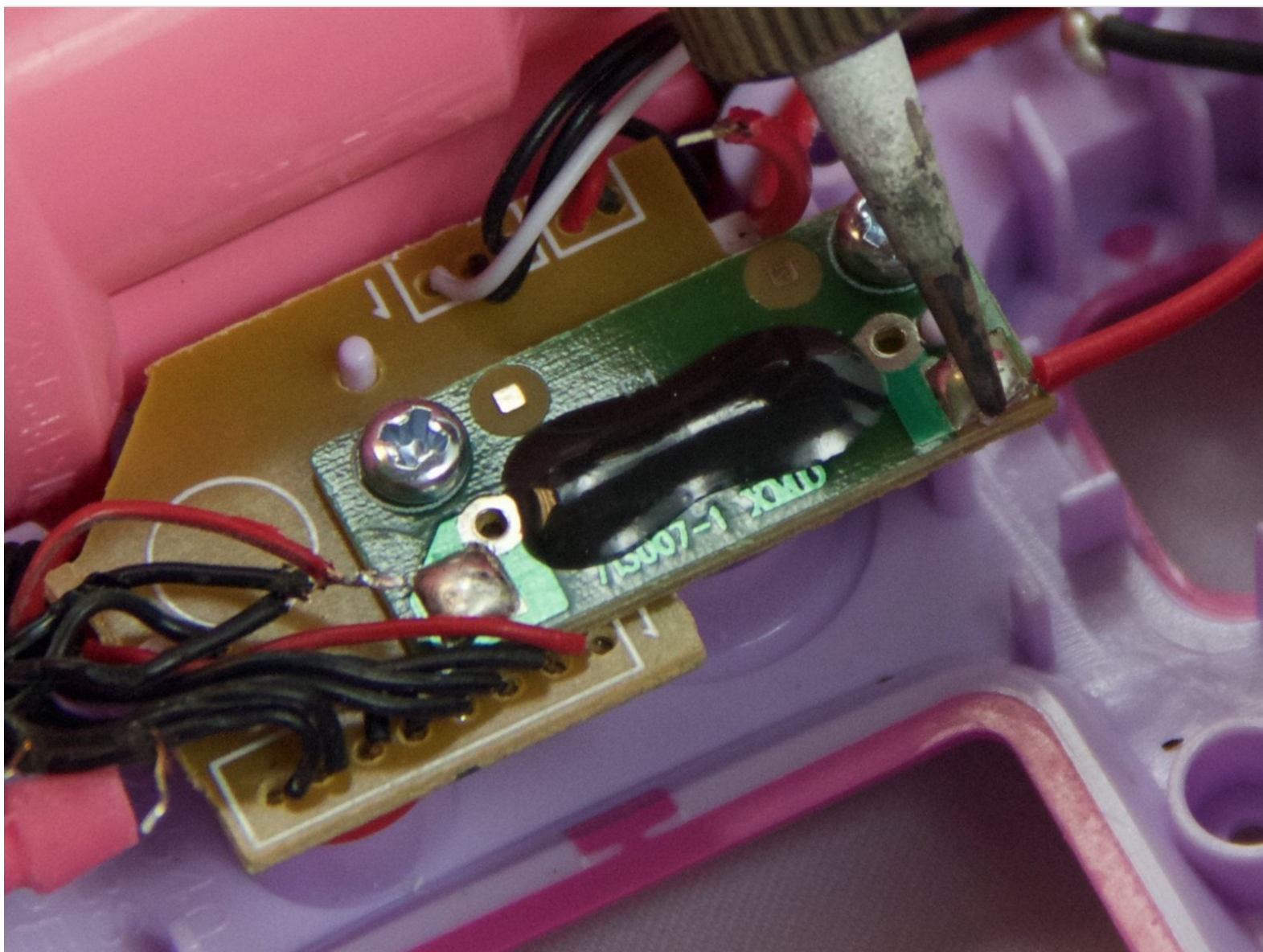




# VTech Kidizoom Camera Connect Power Distribution Circuit Board Replacement

The power distribution circuit board relays the power from the batteries, to the different components of the camera via a few wires. Replacing this component may resolve the issue of the device not turning on.

Written By: Justin Sanchez



## INTRODUCTION

Use this guide to remove and replace the power distribution circuit board.



### TOOLS:

- [Soldering Iron](#) (1)
  - [Metal Spudger](#) (1)
  - [Phillips #0 Screwdriver](#) (1)
-

## Step 1 — Front Case



**⚠ Remove batteries and SD card before beginning disassembly!**

- Locate the four plastic screw covers denoted by the markers and gently pry them up with the metal spudger.

## Step 2



- Remove all four (11mm) screws with the Philips #0 screwdriver.




### Step 3



- Remove the two battery cartridges located on the underside of the camera.
- Once cartridges are removed, use the metal spudger to pry open the top, bottom, and both sides of the camera.

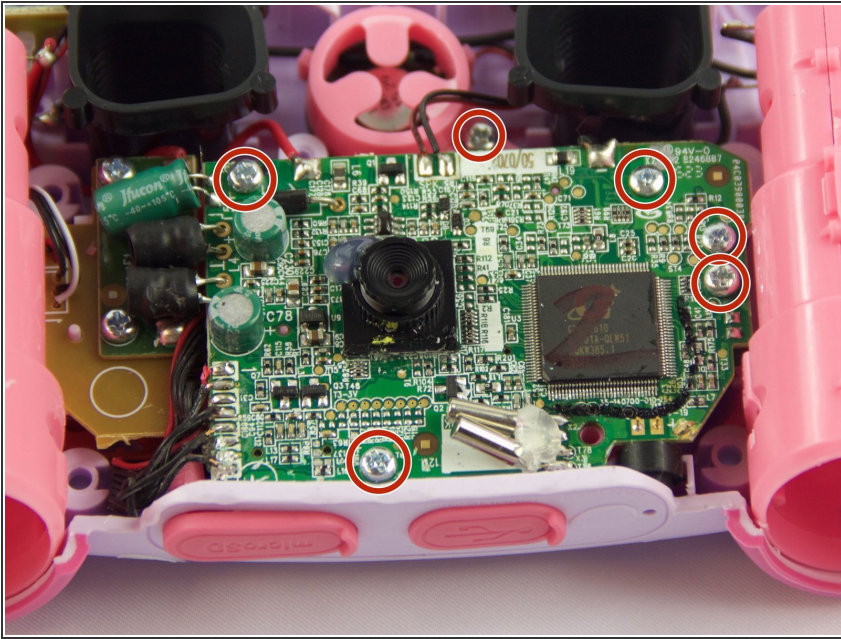
### Step 4



 Beware of the two black viewfinder lens falling out as you pry open the device!

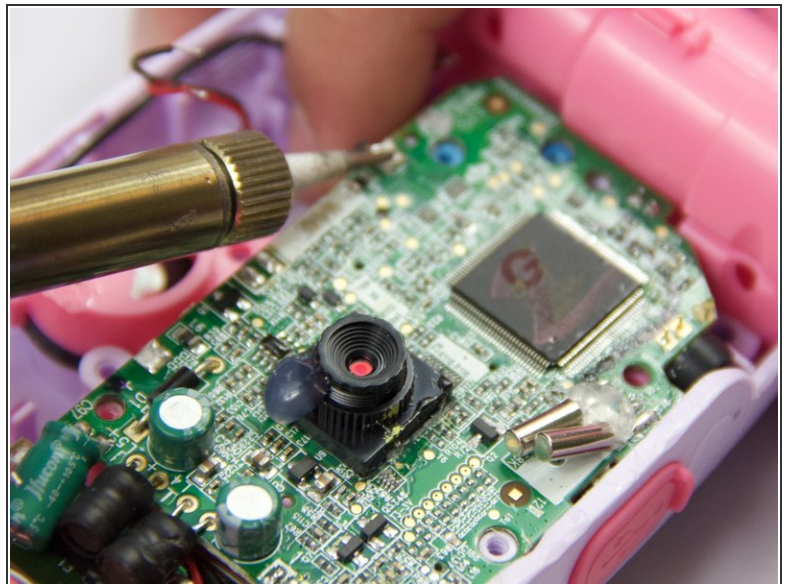
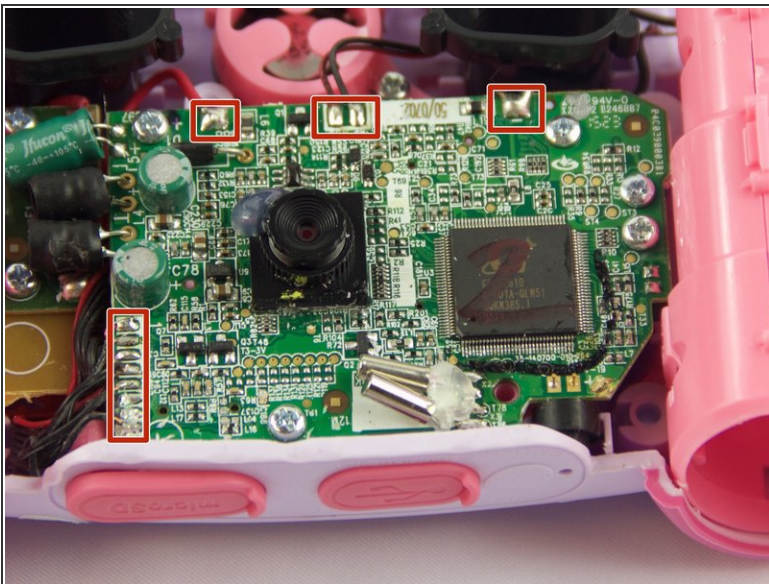
- The device should now be open and ready for further repair and/or replacement parts.

## Step 5 — Motherboard



- Locate and remove the screws circled in the provided image with a Philips #0 screwdriver.

## Step 6



- Unsolder the connection points on the motherboard.

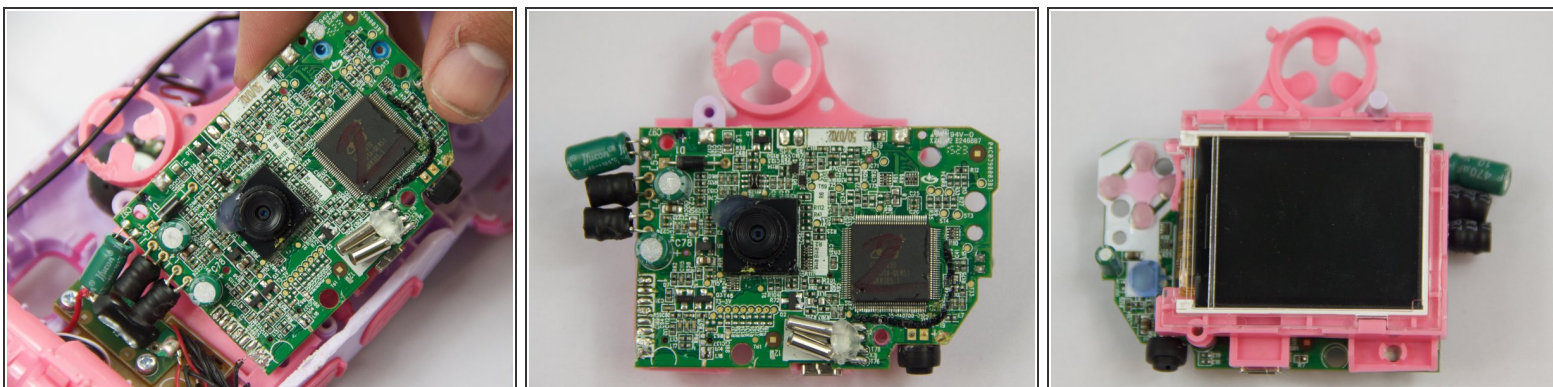


## Step 7



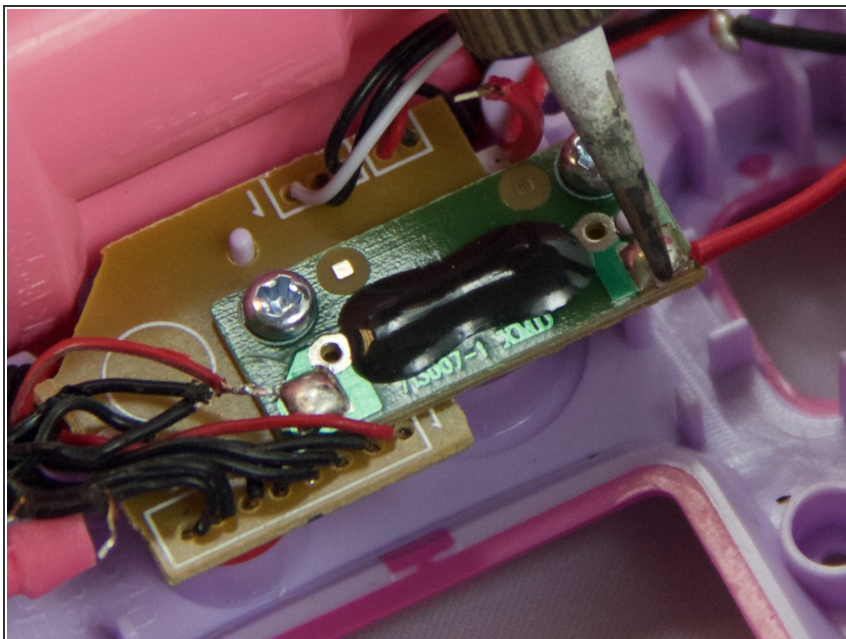
- Unsolder the connections to the right battery terminal. Removing the terminal allows easier access to the motherboard.

## Step 8



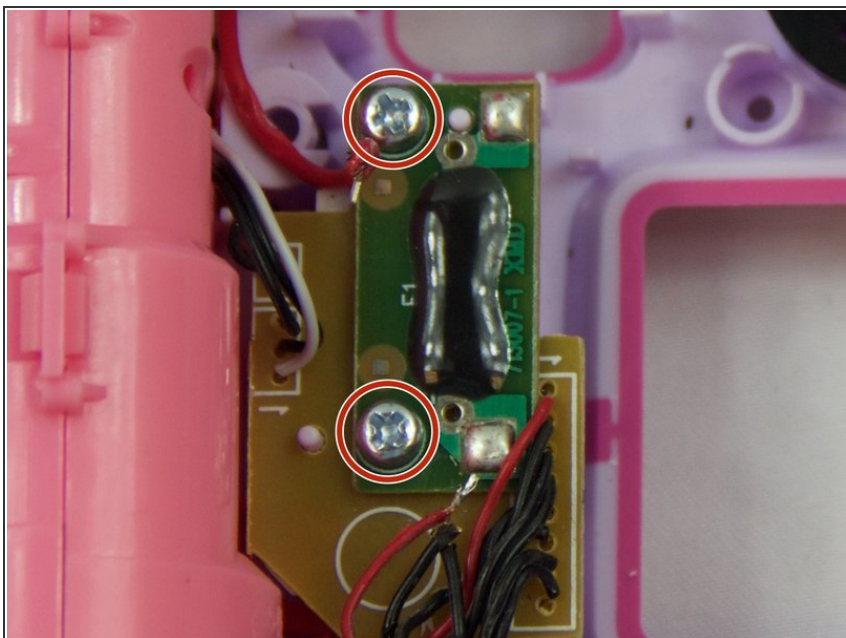
- Carefully pull up on the motherboard and pink plastic underneath the motherboard. The pink plastic contains the display and is connected to the motherboard.

## Step 9 — Power Distribution Circuit Board



- Unsolder the wires connected to the power distribution circuit board.

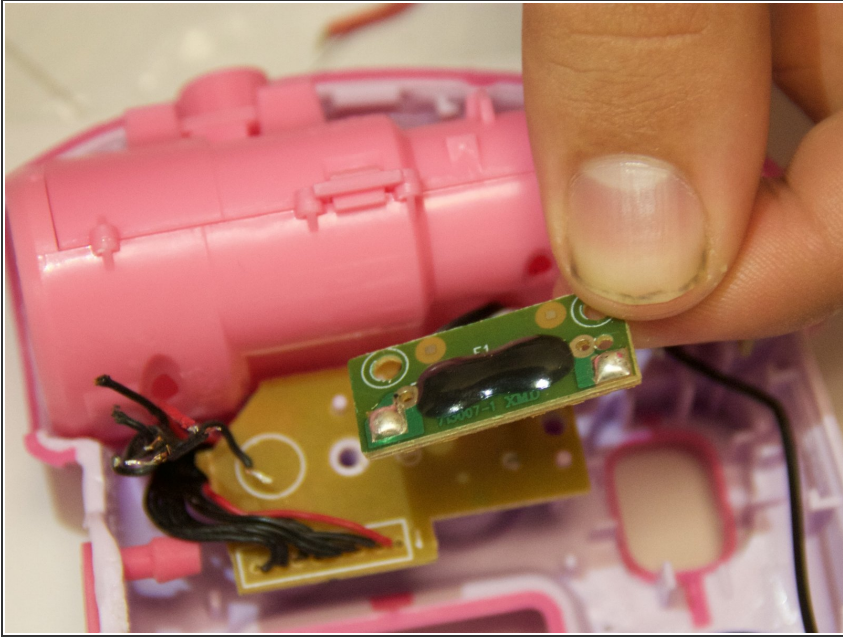
## Step 10



- Locate and remove the two screws that hold in the power distribution circuit board using a Philips #0 screwdriver.



## Step 11



- Gently pull up on power distribution circuit board and remove it from the device.

To reassemble your device, follow these instructions in reverse order.