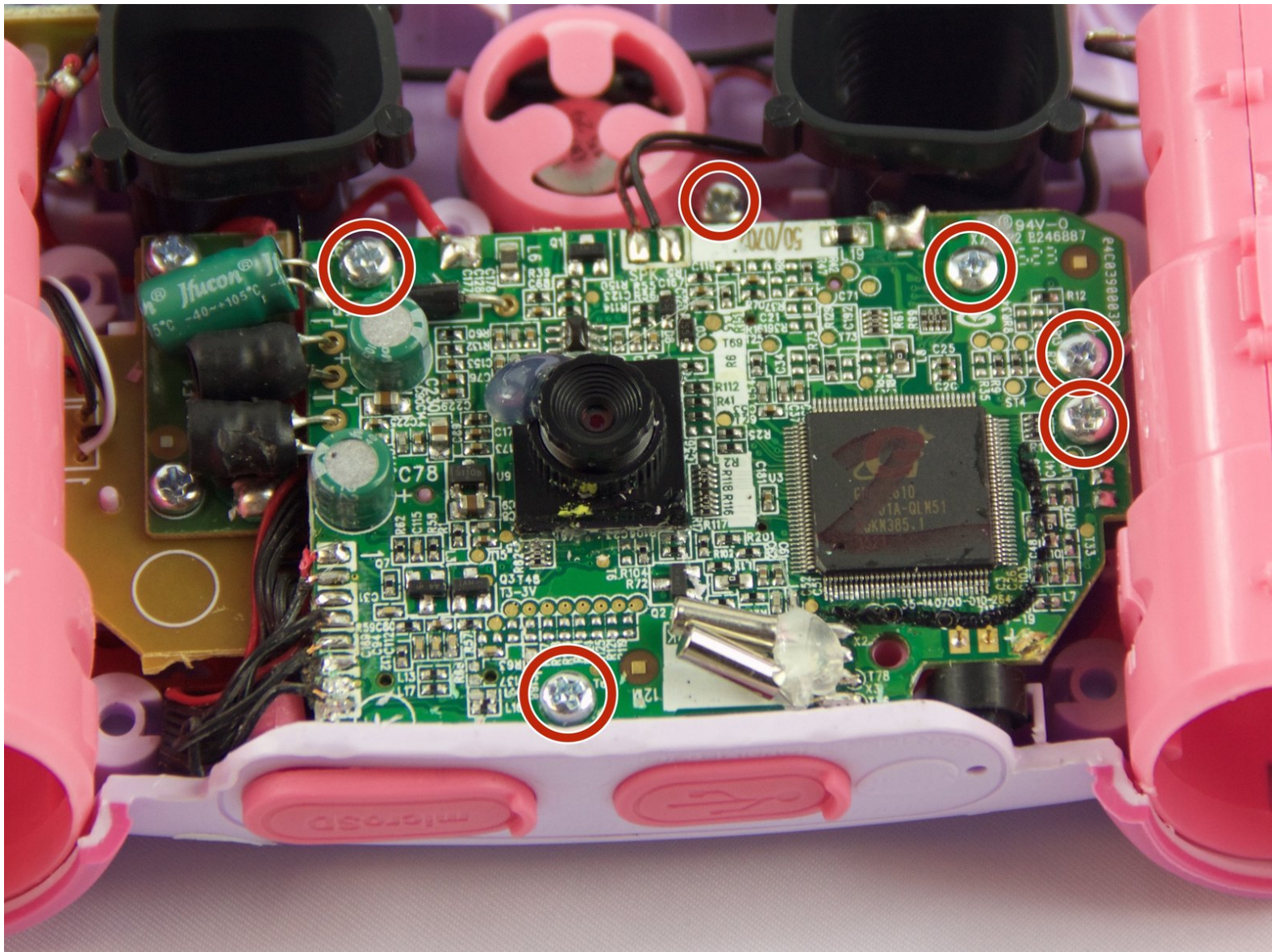




VTech Kidizoom Camera Connect Motherboard Replacement

The motherboard is a key component to almost any modern electrical device. This guide will demonstrate how to replace the motherboard on the VTech Kidizoom Camera Connect.

Written By: Justin Sanchez



INTRODUCTION

Use this guide to remove and replace the motherboard. Removing the motherboard allows you to access other components of the VTech Kidizoom Camera Connect.



TOOLS:

- [Soldering Iron](#) (1)
 - [Metal Spudger](#) (1)
 - [Phillips #0 Screwdriver](#) (1)
-

Step 1 — Front Case



⚠ Remove batteries and SD card before beginning disassembly!

- Locate the four plastic screw covers denoted by the markers and gently pry them up with the metal spudger.

Step 2



- Remove all four (11mm) screws with the Philips #0 screwdriver.


Step 3



- Remove the two battery cartridges located on the underside of the camera.
- Once cartridges are removed, use the metal spudger to pry open the top, bottom, and both sides of the camera.

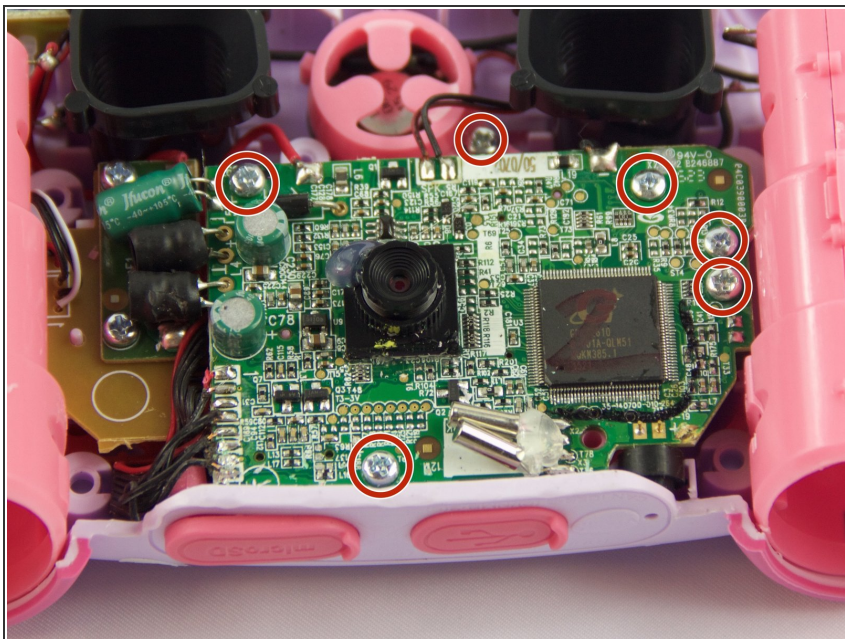
Step 4



 Beware of the two black viewfinder lens falling out as you pry open the device!

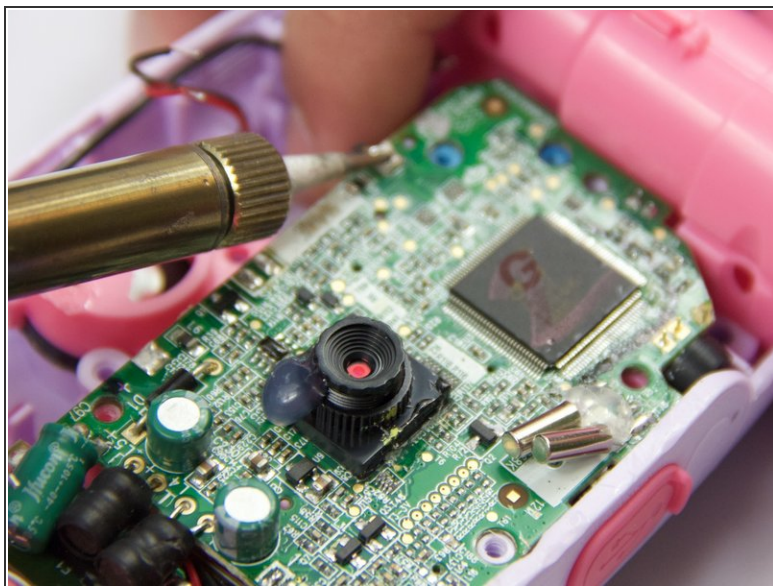
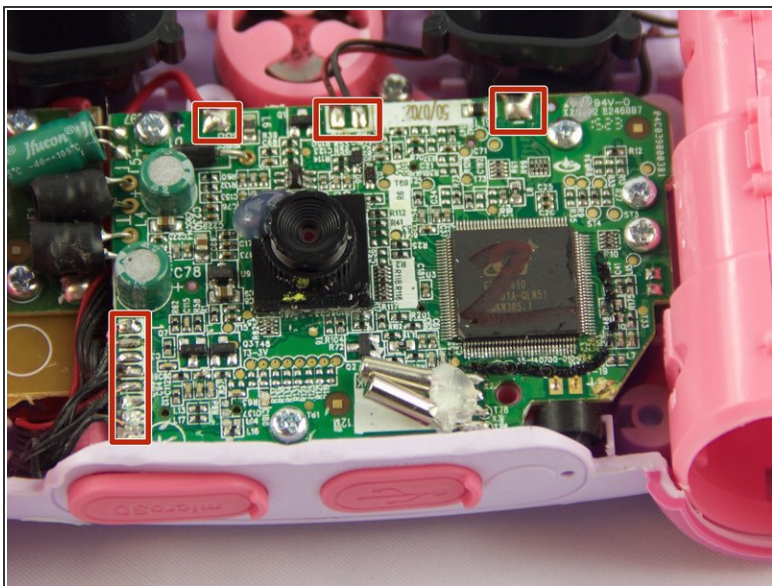
- The device should now be open and ready for further repair and/or replacement parts.

Step 5 — Motherboard



- Locate and remove the screws circled in the provided image with a Philips #0 screwdriver.

Step 6



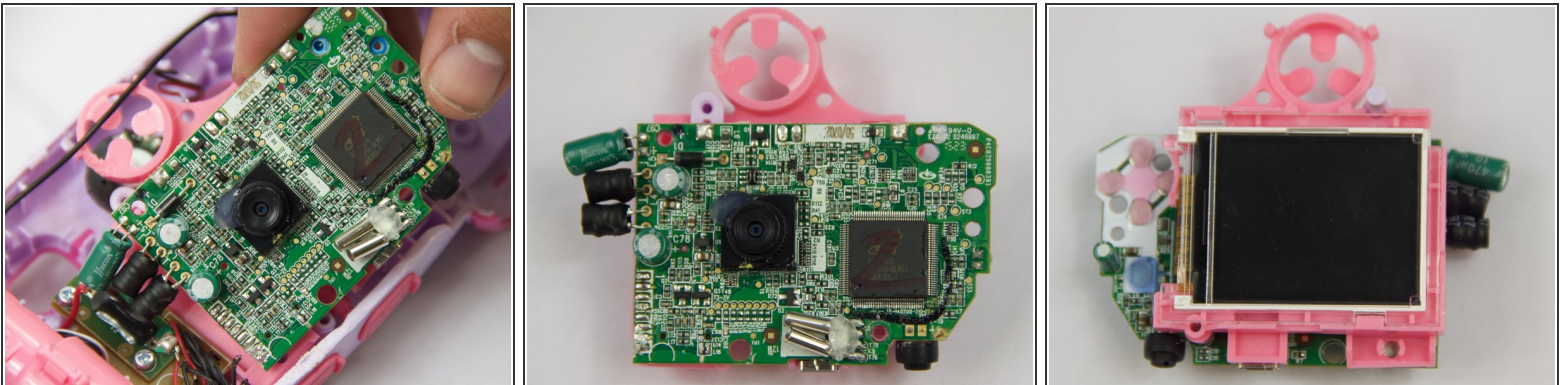
- Unsolder the connection points on the motherboard.

Step 7



- Unsolder the connections to the right battery terminal. Removing the terminal allows easier access to the motherboard.

Step 8



- Carefully pull up on the motherboard and pink plastic underneath the motherboard. The pink plastic contains the display and is connected to the motherboard.

To reassemble your device, follow these instructions in reverse order.