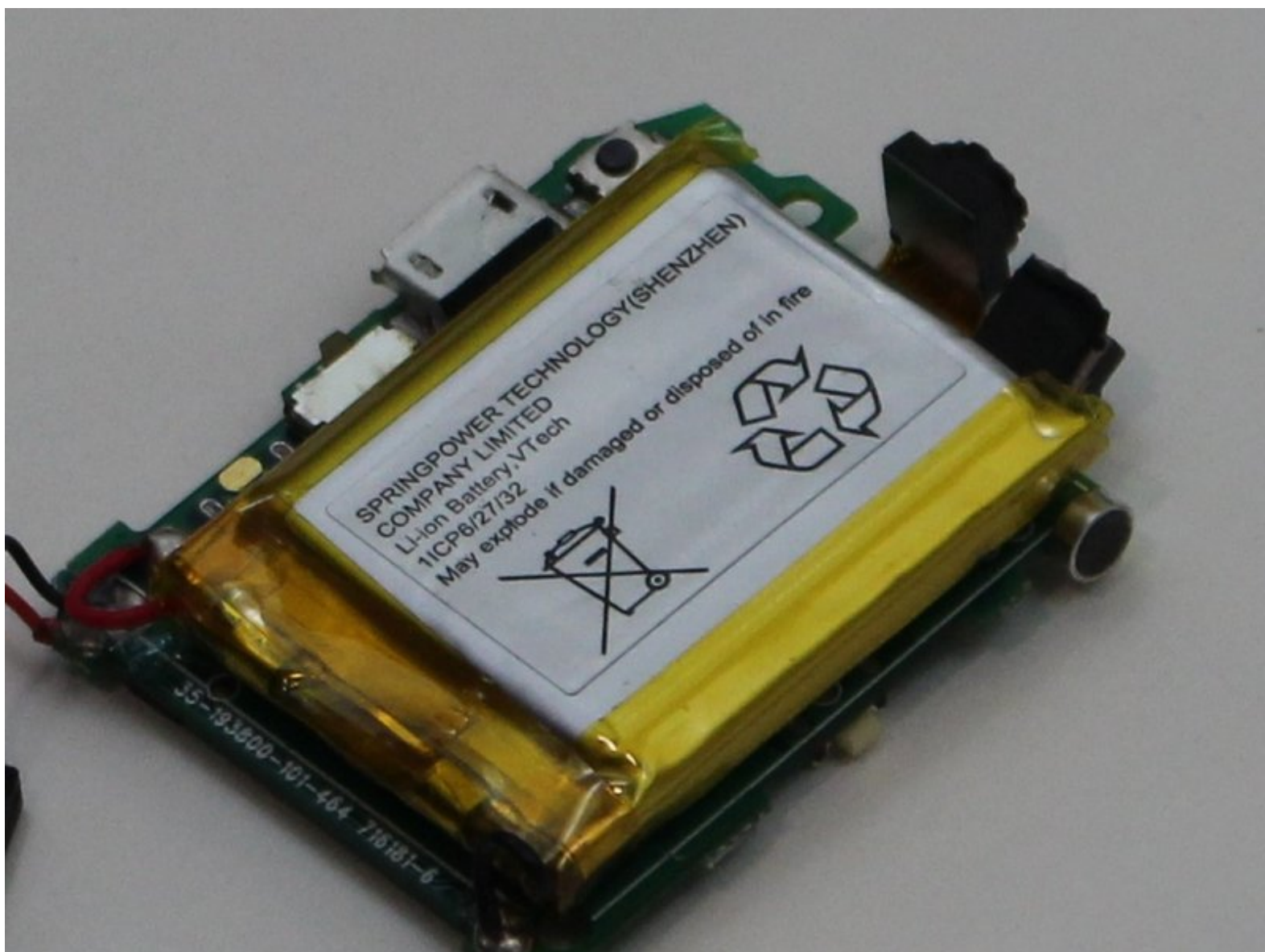




# VTech Kidizoom Smartwatch DX2 Battery Replacement

How to replace a VTech Kidizoom Smartwatch DX2 battery.

Written By: Jessica Richard



## INTRODUCTION

If your Smartwatch is not charging, and you tested the cables, then the battery may need to be replaced. This guide will show you how to do this.



### TOOLS:

- [Soldering Iron](#) (1)
- [Tweezers](#) (1)
- [Phillips #00 Screwdriver](#) (1)
- [Solder](#) (1)



### PARTS:

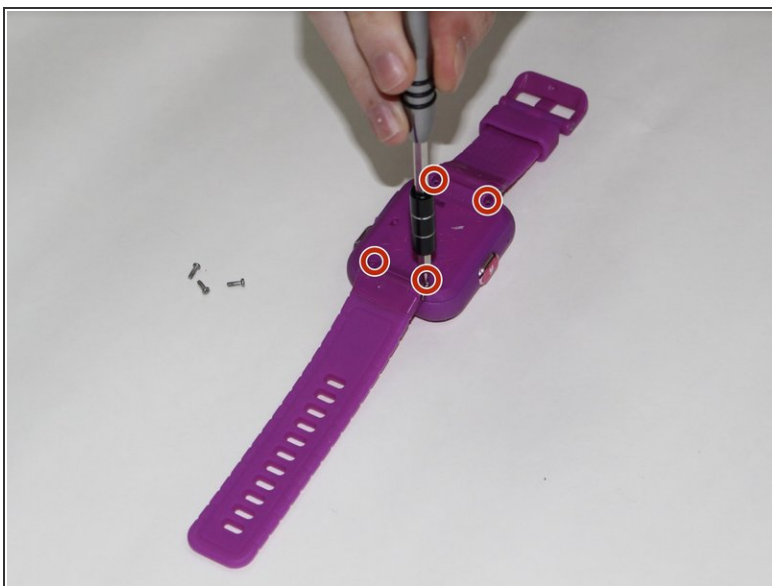
- [Replacement Battery](#) (1)

## Step 1 — Master Switch



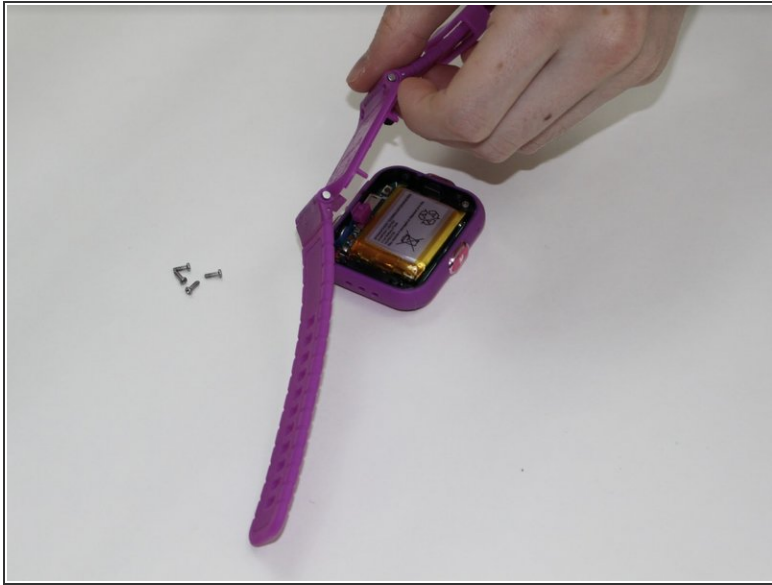
- Begin by flipping the watch over with its back facing upwards.

## Step 2



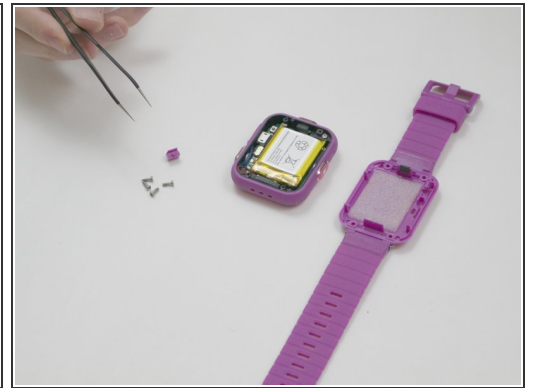
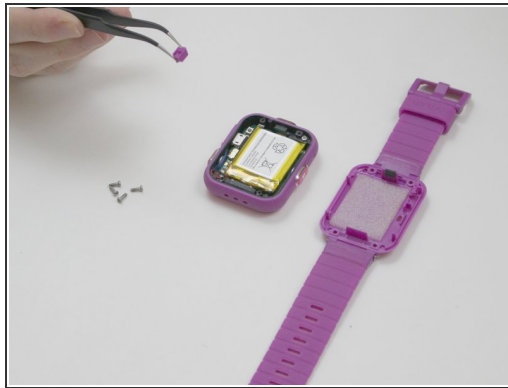
- Next, use the Phillips #00 screwdriver to unscrew the four 6.0 mm screws located in each corner of the watch to remove the backplate.

## Step 3



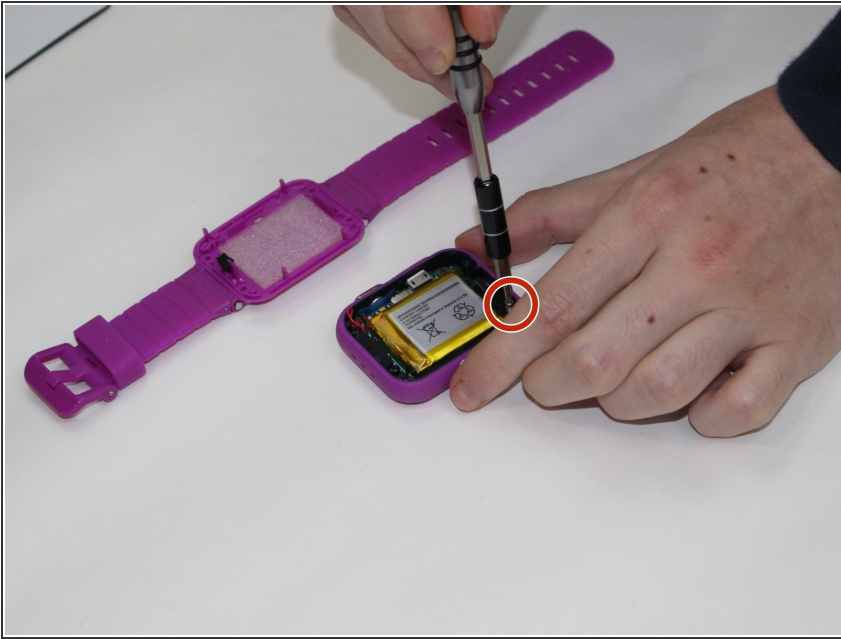
- Gently lift the backplate up to remove it.

## Step 4



- After removing the backplate, lift the master switch up from the circuit board.

## Step 5 — Motherboard



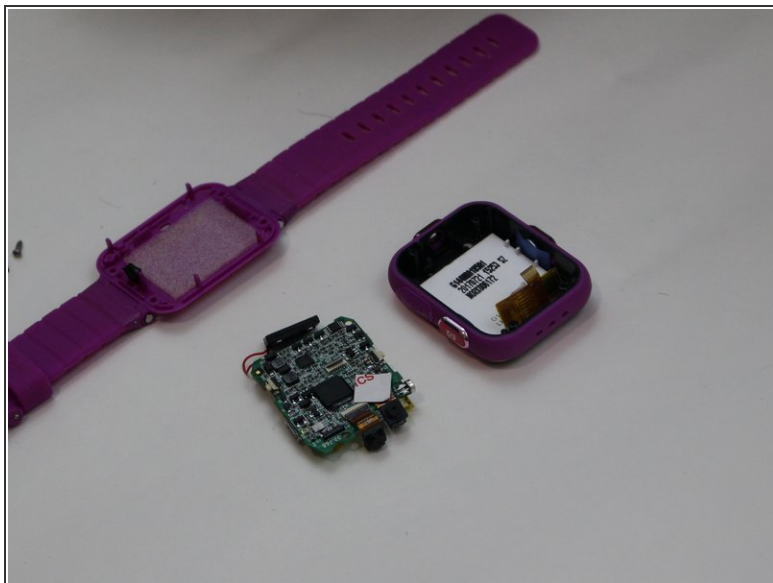
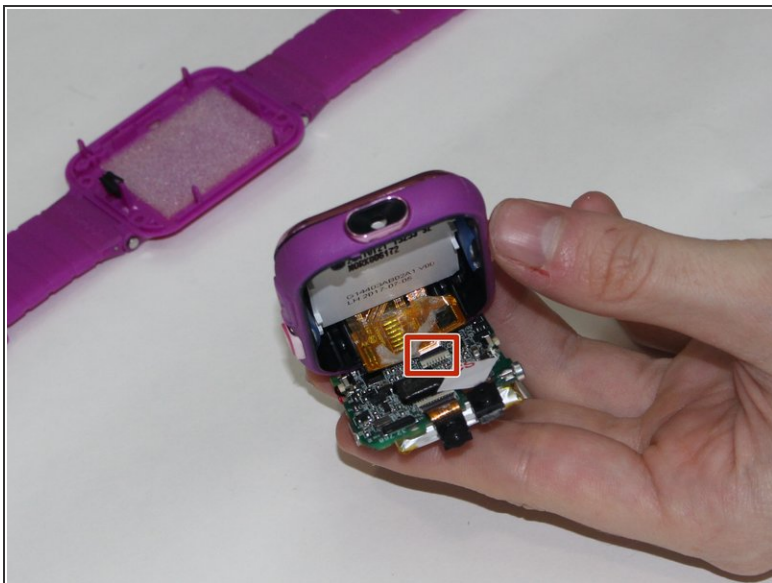
- Using a Phillips #00 screwdriver, remove the 0.6 mm screw.

## Step 6



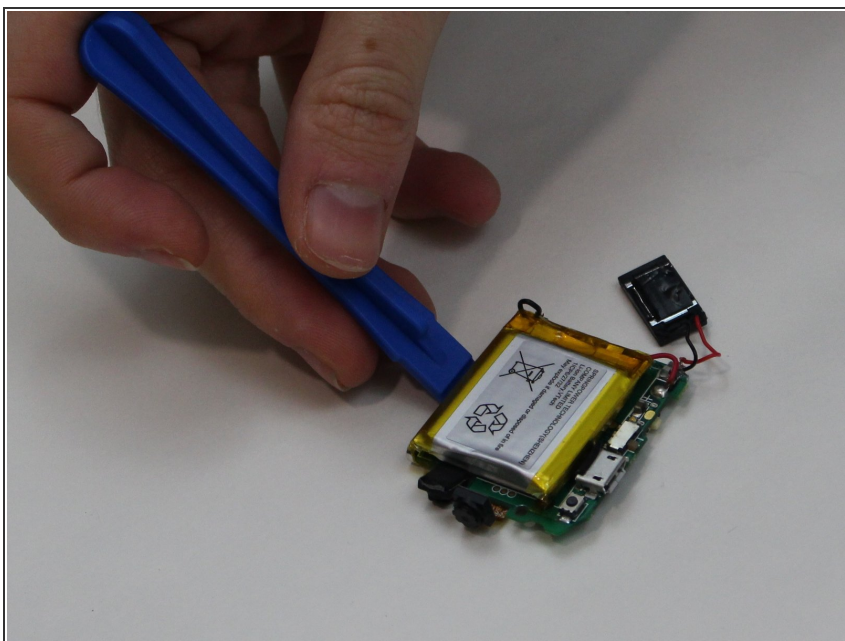
- Carefully remove the speaker from the case without disconnecting it from the motherboard.

## Step 7



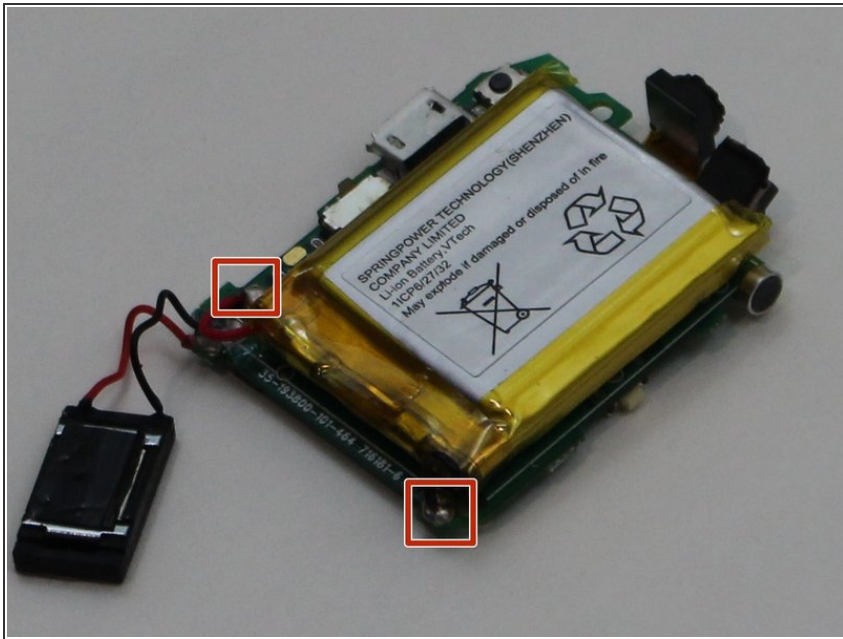
- Using the tweezers, carefully lift the bar holding the connection to the screen.
- Remove the motherboard from the device.

## Step 8 — Battery



- Carefully pry the battery off of the circuit board using the plastic opening tool.

## Step 9



- De-solder the wires connecting the battery to the circuit board.
- Remove the battery.

To reassemble your device, follow these instructions in reverse order.