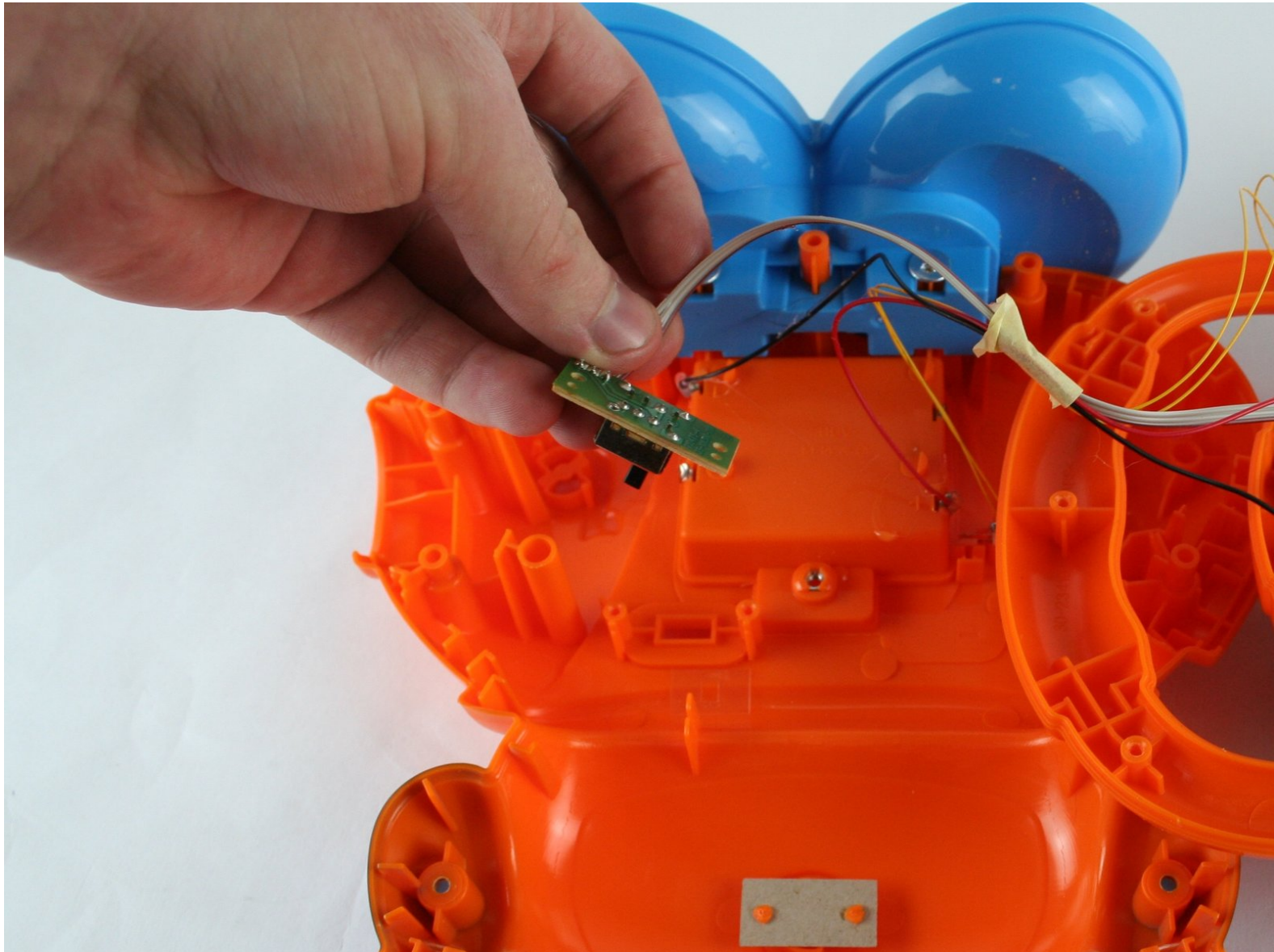




VTech Learning Tunes Karaoke Volume Switch Replacement

Replace the volume switch.

Written By: Lezette Leuterio



INTRODUCTION

Are you unable to adjust the volume? This guide may help solve your problem.



TOOLS:

- [Phillips #2 Screwdriver](#) (1)
 - [Phillips #1 Screwdriver](#) (1)
 - [Flathead Screwdriver](#) (1)
 - [Soldering Iron](#) (1)
-

Step 1 — Volume Switch



- To remove the battery door, loosen the screw using a Flathead screwdriver.

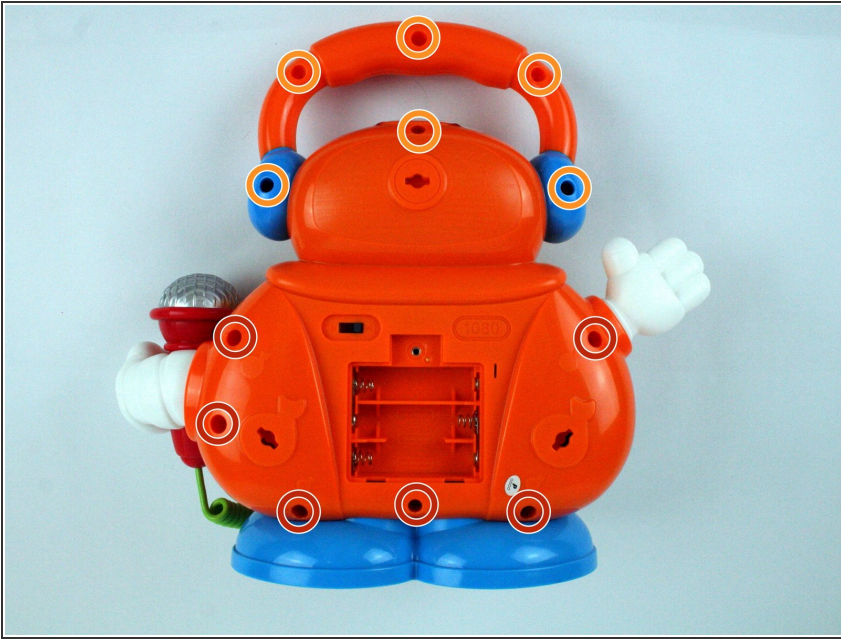
ⓘ A coin can also be used to loosen the screw.

Step 2



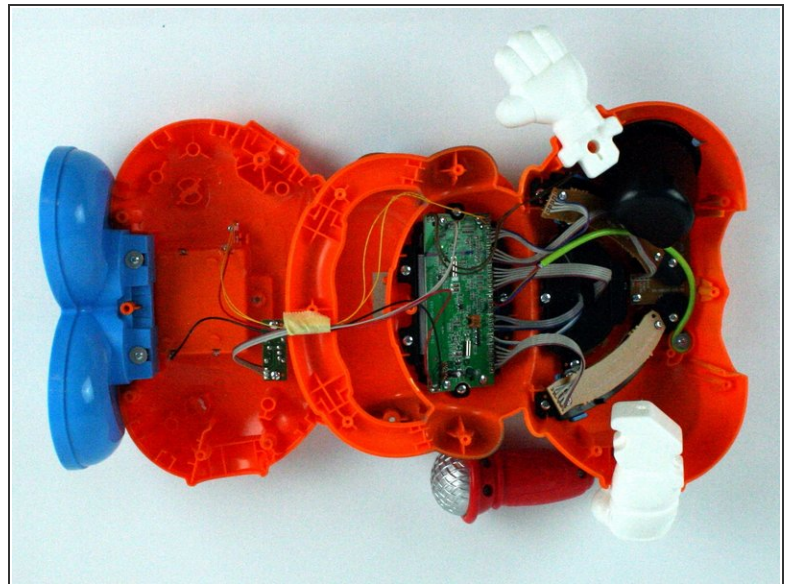
- Remove the battery door and take out the batteries.

Step 3



- Remove the six 9.5 mm Phillips #2 screws.
- Remove the six 6.0 mm Phillips #2 screws.

Step 4



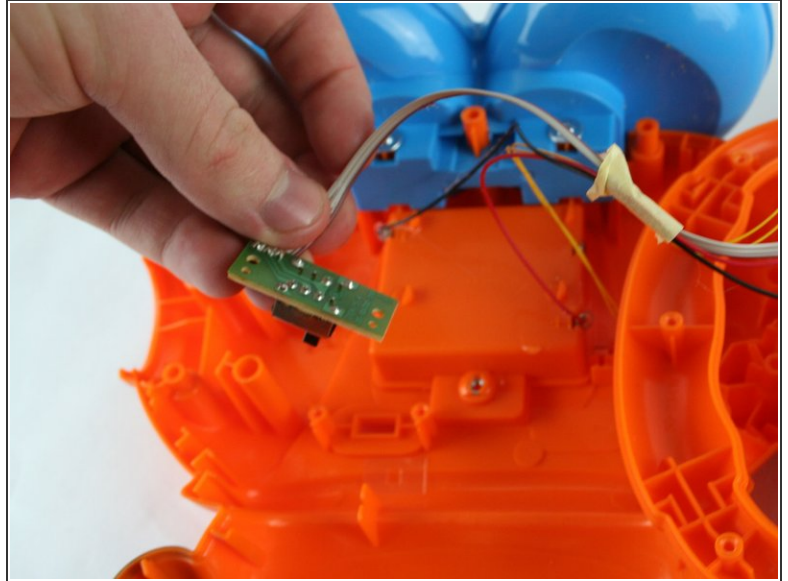
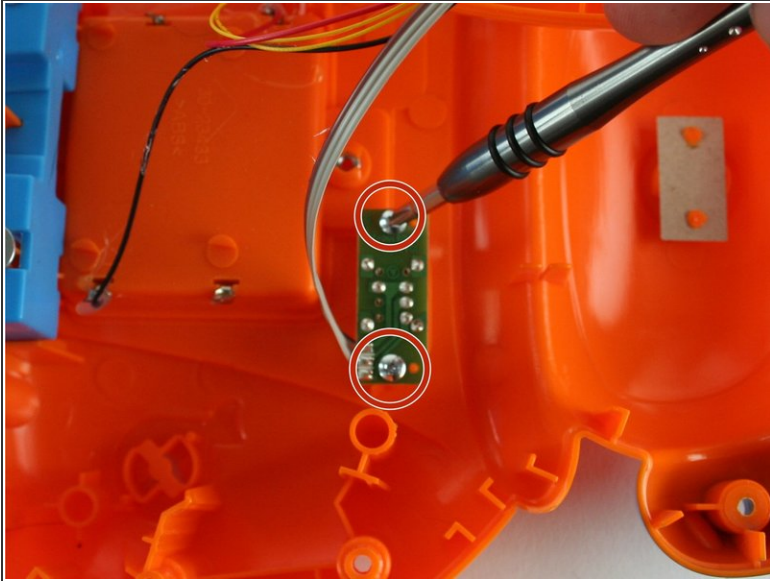
- Gently pull up on the rear panel.

⚠ Be careful to not pull on the wire connections.

- Gently place the back panel underneath the top panel with the tops facing each other, as shown in the picture.

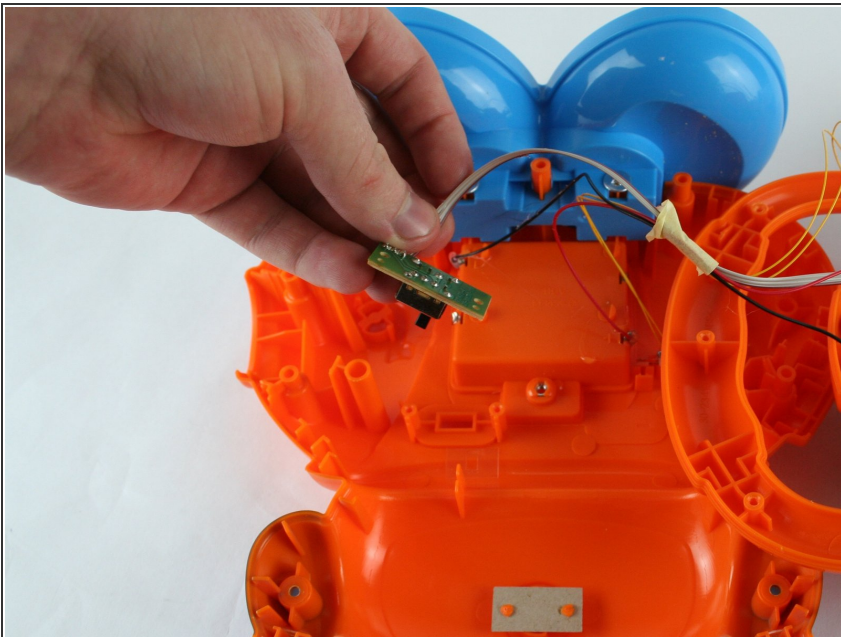
This document was generated on 2019-09-22 02:17:07 PM (MST).

Step 5



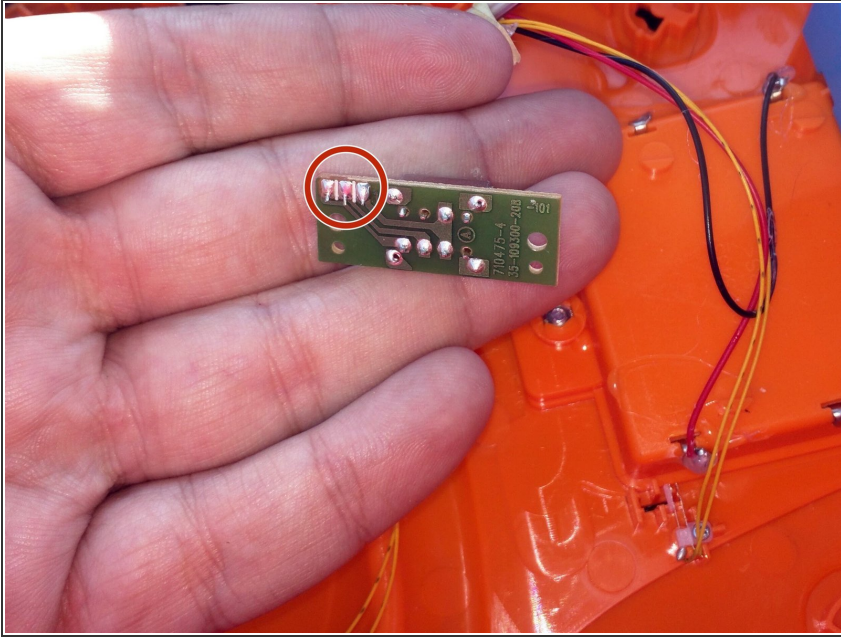
- Using a Phillips PH1 screwdriver, remove the two 7.9 mm volume switch board screws.

Step 6



- Once the screws have been removed, carefully move the volume switch board.

Step 7



⚠ Carefully desolder the old switch.

- [iFixit guide on soldering](#)

To reassemble your device, follow these instructions in reverse order.