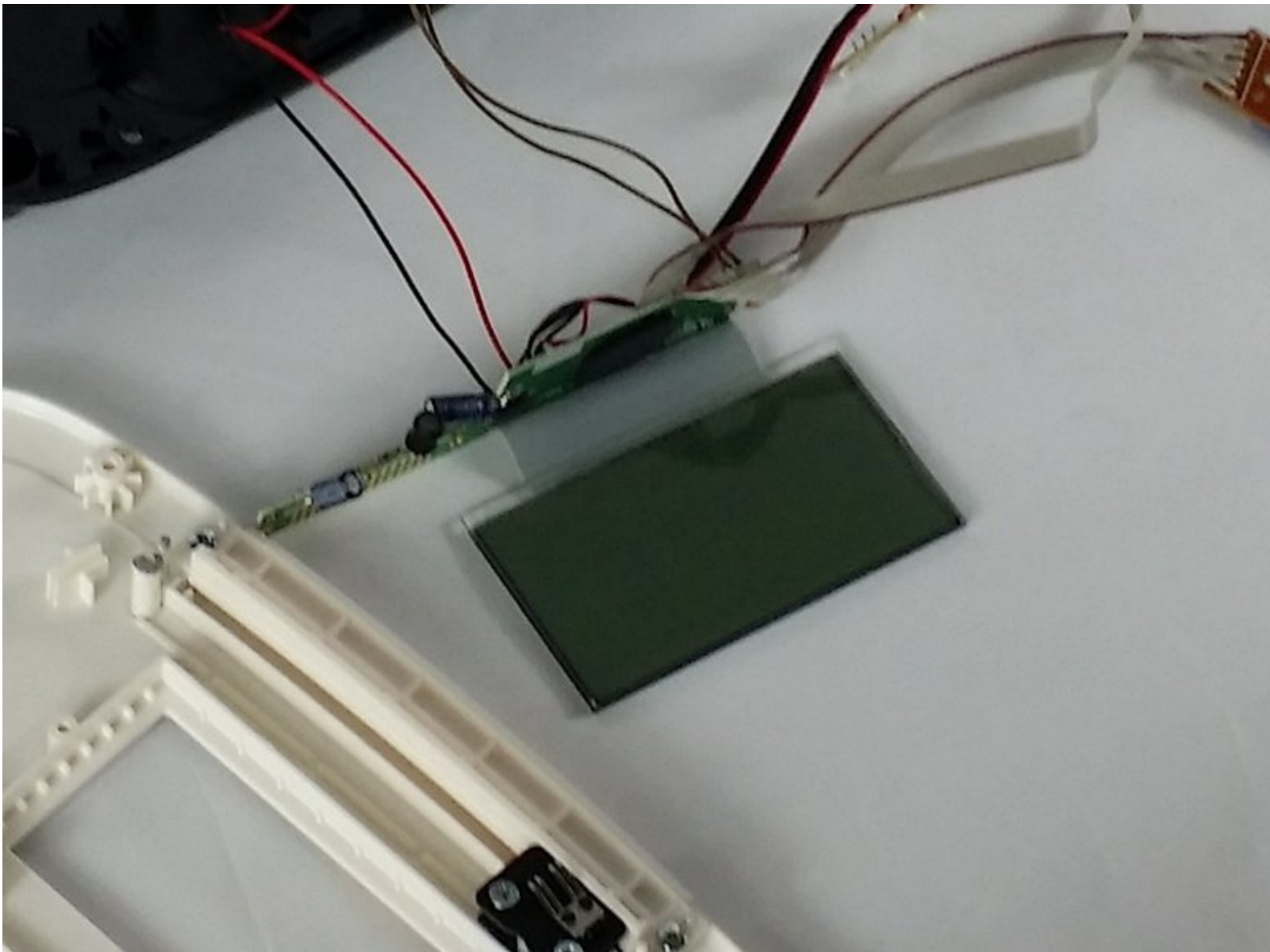




VTech Little Apps Tablet Screen Replacement

This guide will assist you in replacing the screen of the Vtech Little Apps Tablet.

Written By: Dakota Wiersma



INTRODUCTION

The screen of the device is attached to the motherboard by a ribbon cable, which is a fragile piece of circuitry. This guide will help you in removing the screen from the motherboard without damaging these elements.

TOOLS:

- [Phillips #0 Screwdriver](#) (1)
 - [Phillips #1 Screwdriver](#) (1)
 - [iFixit Opening Tools](#) (1)
 - [Solder](#) (1)
 - [Soldering Iron](#) (1)
 - [Heat Gun](#) (1)
 - [Spudger](#) (1)
-

Step 1 — Battery



- Remove the 9.9 mm screw covering the batteries with a PH1 driver head.

Step 2



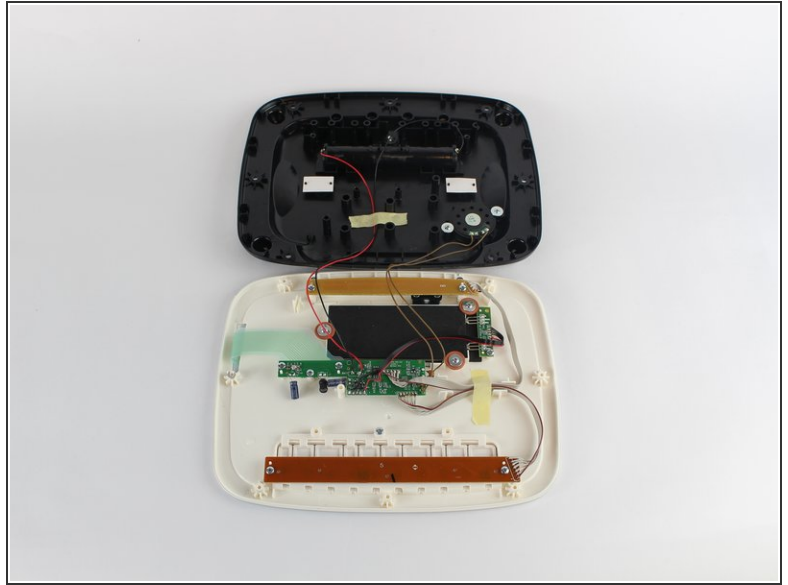
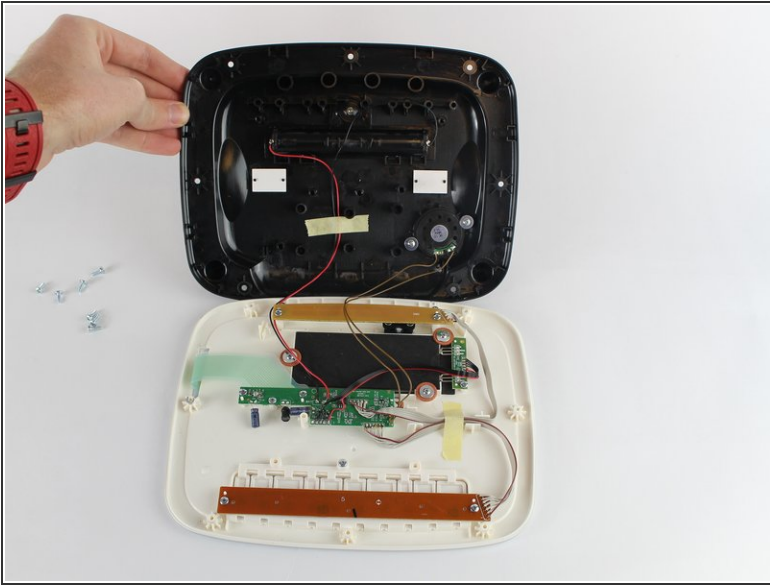
- Use a plastic opening tool to pry the batteries out of their holding.
- ☑ If replacing your batteries with new ones, be careful to insert them as indicated on the device.

Step 3 — Back Cover



- Position the VTech Little Apps Tablet face-down on a flat surface so that you can clearly see the back of the device.
- Remove all seven 9.6 mm screws located around the perimeter of the back cover with a PH1 driver head.

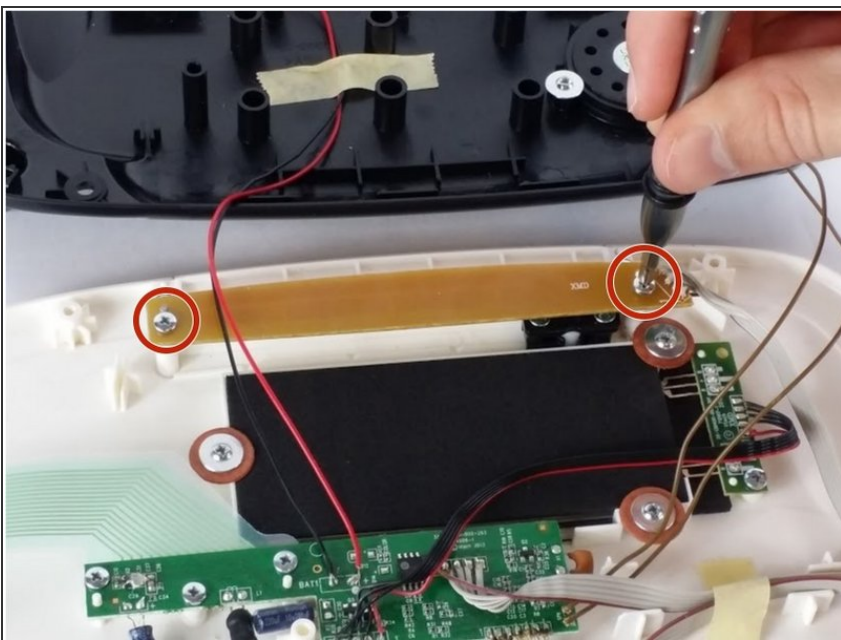
Step 4



- Gently remove the back cover then flip it 180 degrees so that the back cover of the device is now face-down.

⚠ Proceed with caution as there are wires attaching the back cover to the front cover of the device that could be easily detached.

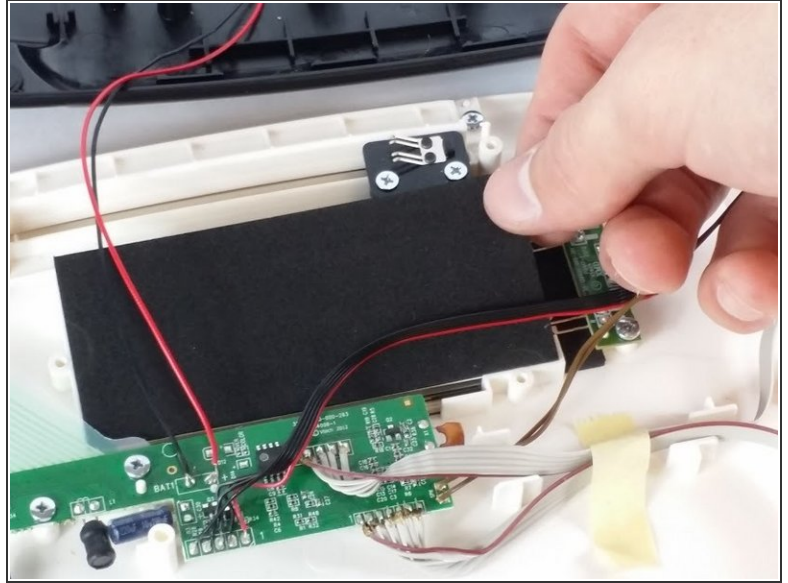
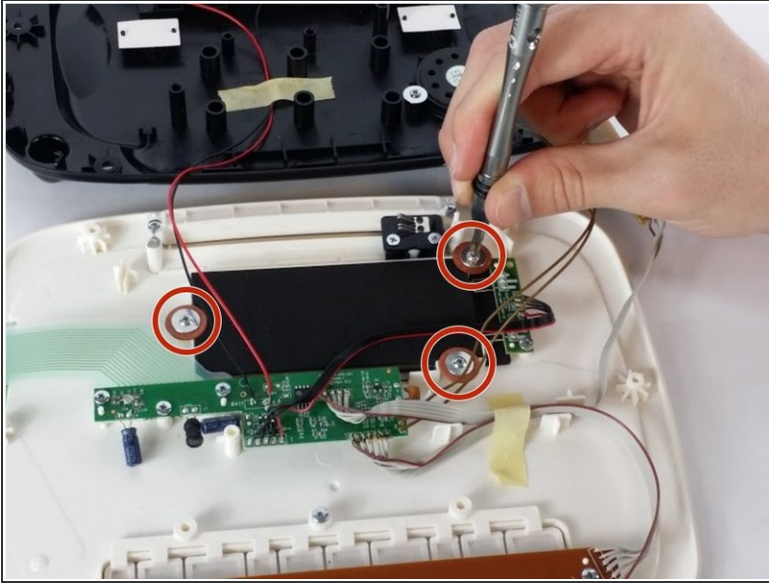
Step 5 — LED



- Unscrew the two 7.3 mm screws using a PH0 driver head.
- Gently lift the beige circuit board and set aside.

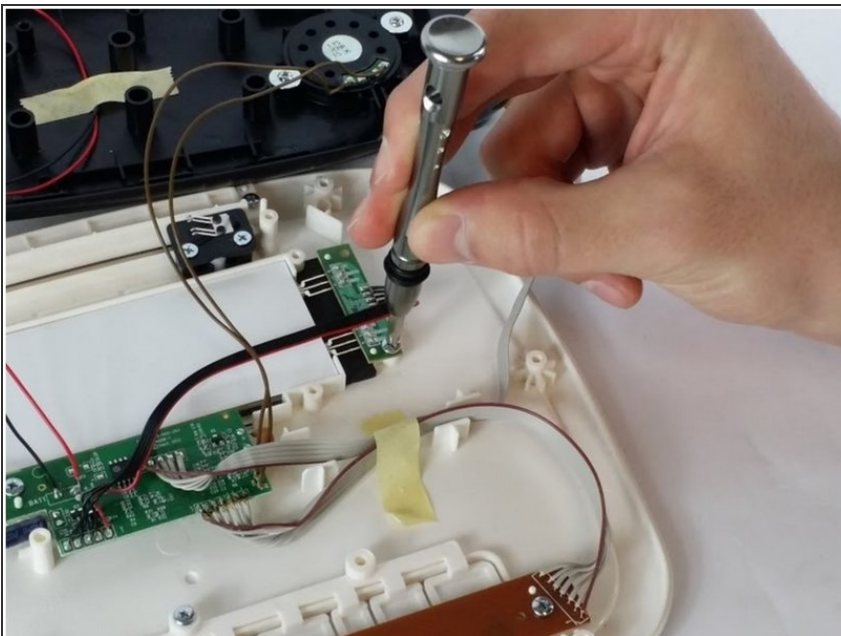
⚠ Be sure to not damage the wires connecting the circuit board to the motherboard, you are only creating space to work in.

Step 6



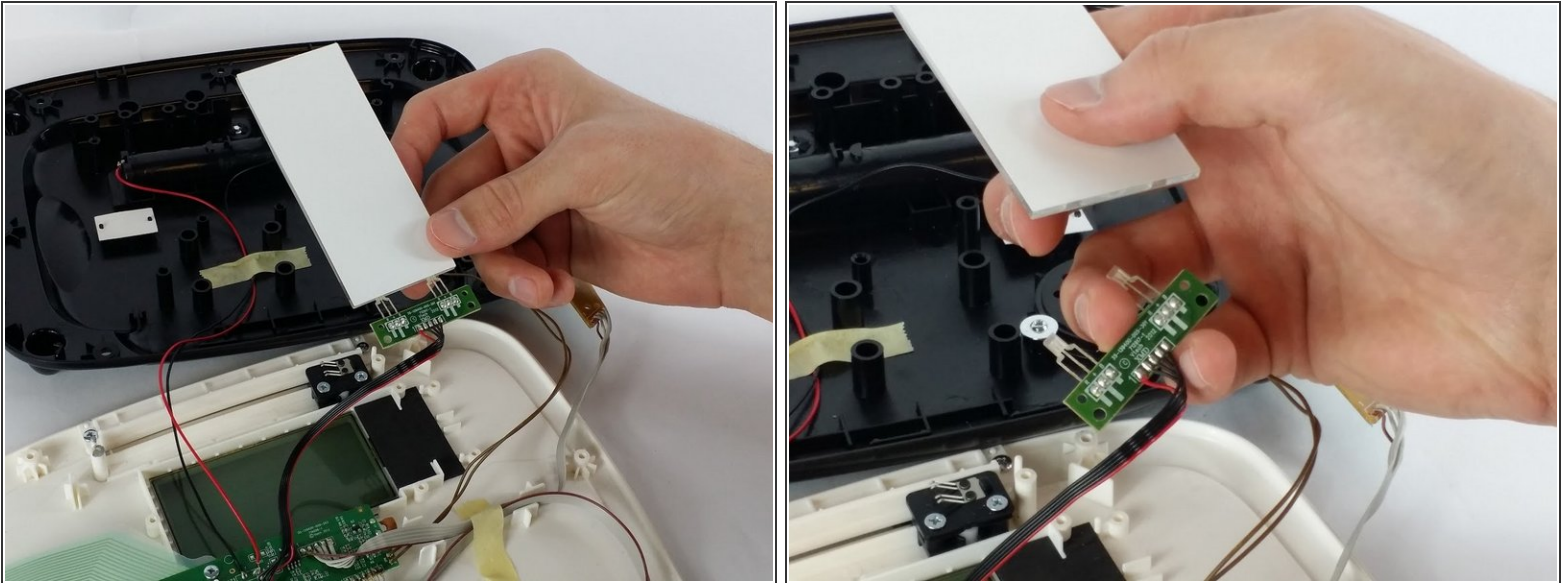
- Unscrew three 7.3 mm panhead screws with the PH0 driver.
- Remove the red-brown washer after removing the screws.
- Remove the black foam insert and set aside.

Step 7



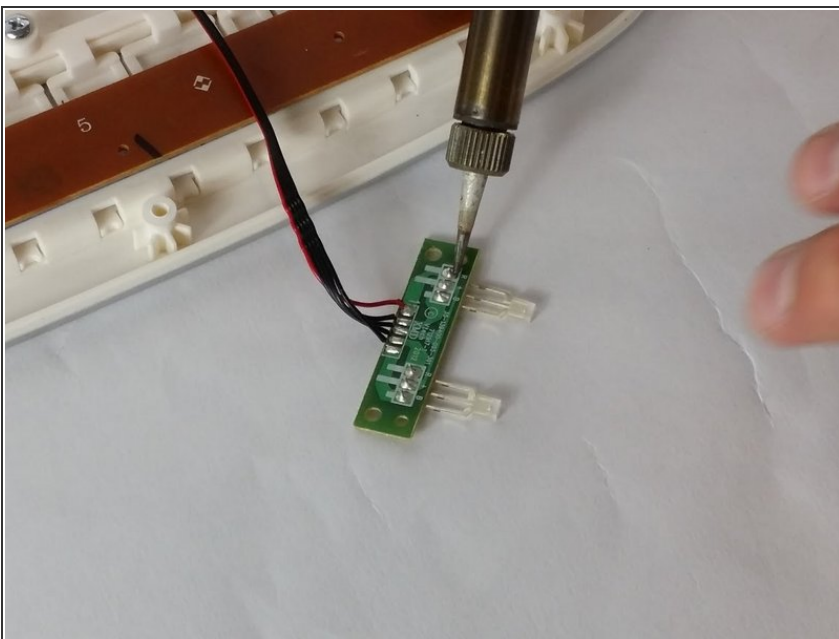
- Unscrew the 7.3 mm screw fastening the LED circuit board to the device shell with a PH0 driver head.
- ⚠ Be careful when rescrewing circuit boards. Too much pressure or too tight of screws could damage them.

Step 8



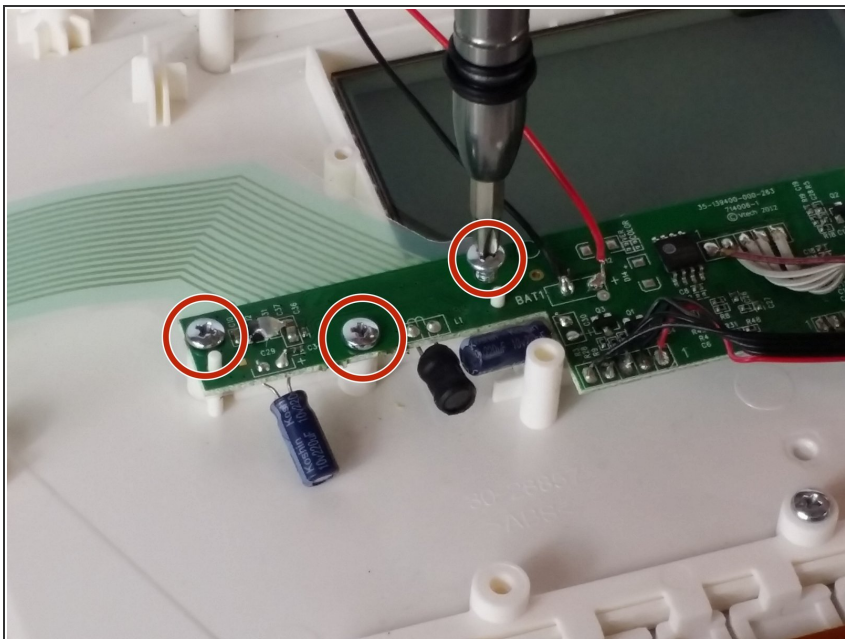
- Gently lift both LED circuit board and the white glass light refractor panel away from the device.
 - Separate the LED circuit board and light refractor panel by gently pulling apart. Place the light panel to the side.
- i** Skip the next step if you are proceeding with this guide as a part of the Screen Replacement.

Step 9



- Carefully desolder the LED leads (labeled "R", "+" and "B" on the circuit board) to disconnect the LED from the circuit board.
 - Replace the LED and solder the new connection to the LED circuit board.
- i** Refer to the [iFixit Soldering Guide](#) for assistance.

Step 10 — Screen

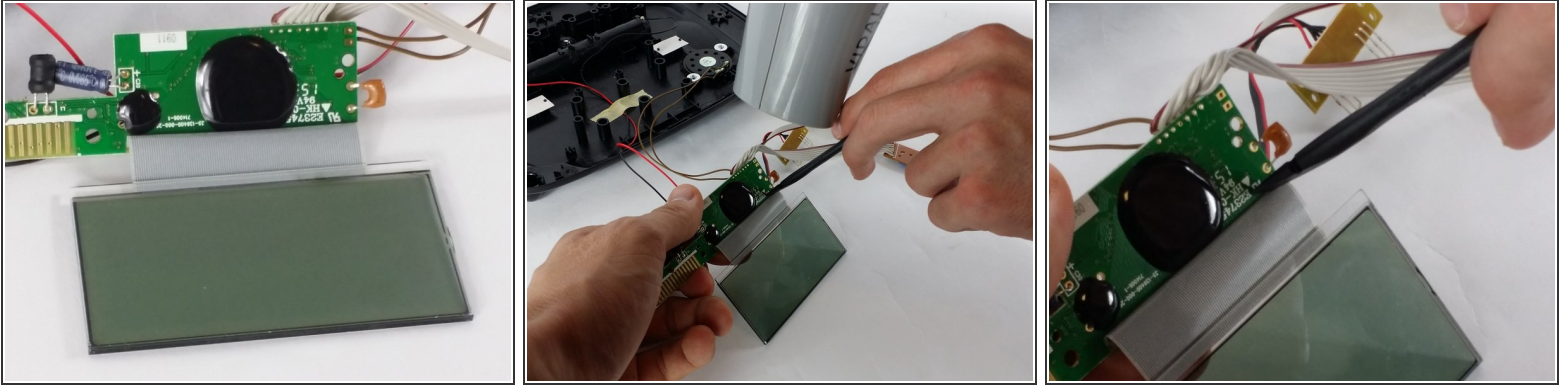


- Remove the three 7.3mm screws securing motherboard to the device shell.

⚠ When resealing the motherboard, avoid over-tightening the screws. Too much pressure could damage the motherboard.

★ Pay attention to the setup of the light-blue ribbon cable located under the motherboard, and use this information for reassembly.

Step 11



- Carefully lift both the screen and motherboard, to access to the ribbon cable underneath.
 - Use a heat gun (or hair dryer) to apply low heat to the ribbon cable attachment on the motherboard.
- ⚠️ Avoid overheating the ribbon cable and motherboard or they may melt.
- Carefully use a nylon spudger to separate the ribbon cable from the motherboard and remove the screen.
- ℹ️ This step may require two sets of hands; having a friend always helps!

To reassemble your device, follow these instructions in reverse order.