



VTech Safe and Sound DM111-2 Antenna Replacement

Replace the antenna on your device if you are having signal loss issues or need to extend the signal range.

Written By: Naman Johri



INTRODUCTION

Use this guide if you are having a loss of signal from the baby unit to the parent unit. This guide will showcase how to dismantle the parent unit and replace the antenna. While working on the device make sure the device is powered off and not plugged into the wall, as its unsafe to work on plug-in electronics.



TOOLS:

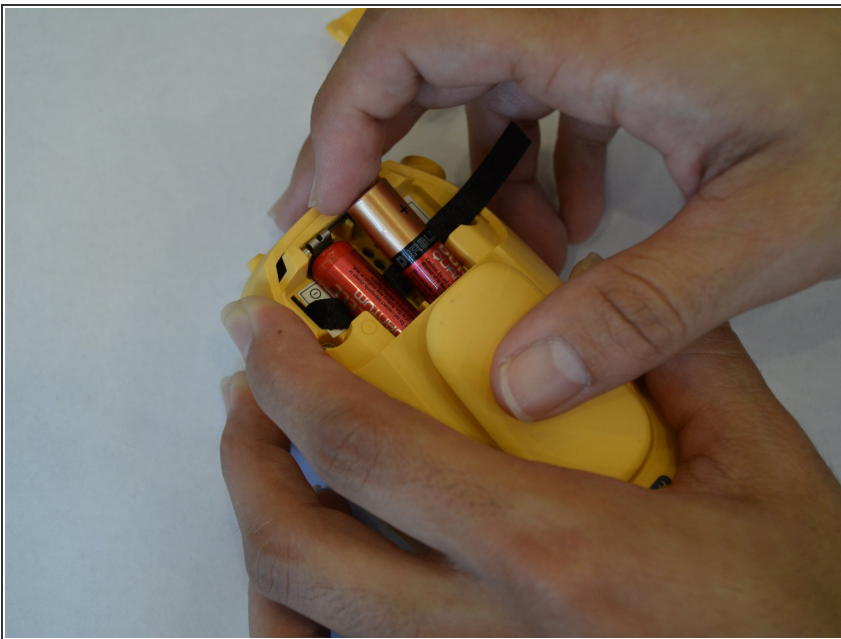
- [iFixit Opening Tools](#) (1)
 - [Phillips #00 Screwdriver](#) (1)
 - [Soldering Workstation](#) (1)
-

Step 1 — Battery



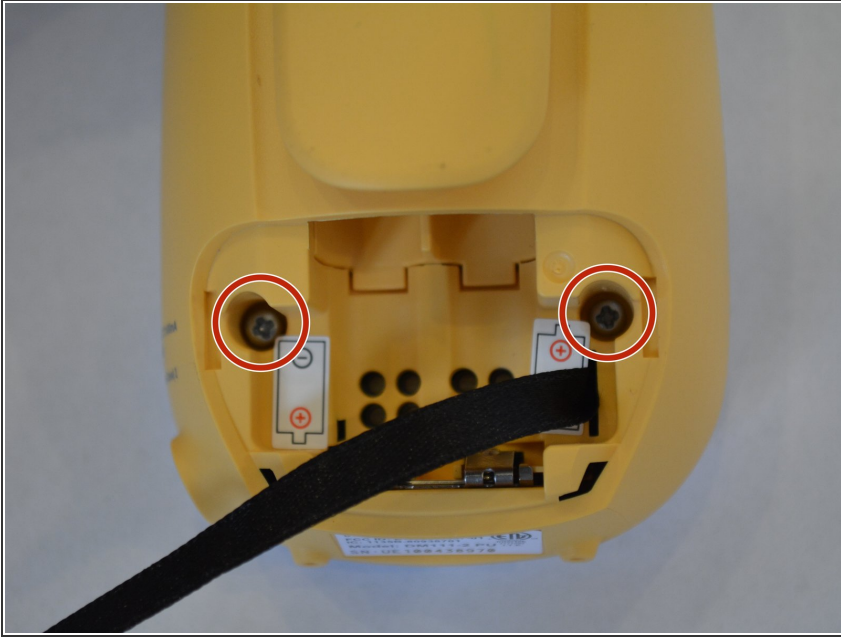
- Expose the battery compartment by removing the lower back cover of the device.
- Do this by holding the back side of the device upside down in your hands and applying pressure to the indented portion with both thumbs.

Step 2



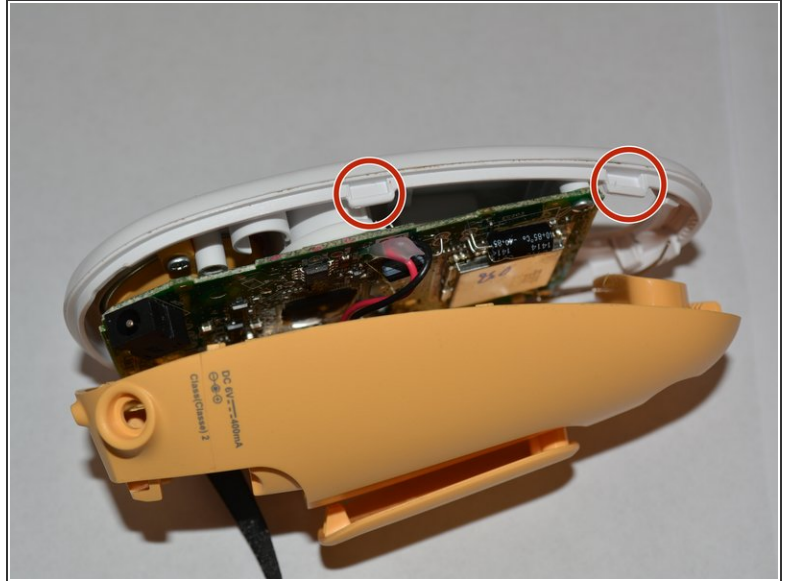
- Once the batteries are exposed, use your index finger to push the battery against the spring and pull up to dislodge the battery.
- ⚠ Make sure to check for battery acid or other corrosive substances before touching the battery. If needed, use latex gloves to avoid skin irritation from battery acid.

Step 3 — Antenna



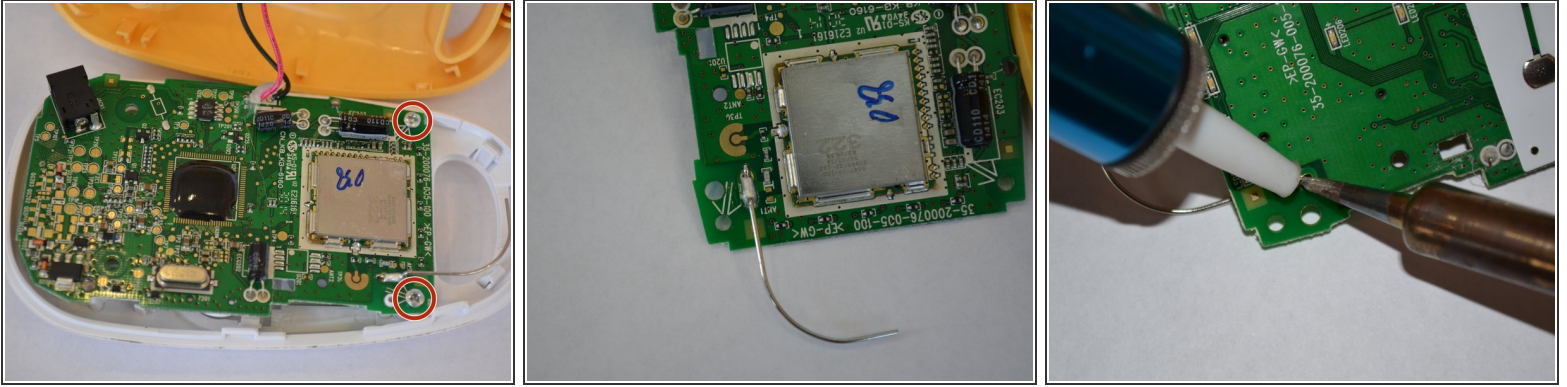
- Using a Phillips #00 screwdriver, remove the two 11.2 mm Philips #00 screws located on either side of the battery slots.

Step 4



- Insert the plastic opening tool into the seam between the front and back coverings to create a gap.
- ⓘ The tool's edge should point toward the front covering. It is easiest to start from the bottom of the device and slide the tool around the seam until all clips have been separated from the tabs.
- ⚠ When separating the front and back cover, be careful not to separate the red and black wires which connect the batteries to the motherboard. Do not forcefully pull the two coverings apart.

Step 5



- Unscrew the two 6.8 mm Phillips #00 screws located on the motherboard.
- ⚠ When separating the motherboard from the front cover, be careful not to separate the two red wires which connect the speaker to the motherboard.
- Once you've safely detached the two units, now relocate the Antenna. Flip the device and locate the solder points.
- Using a Soldering Iron, detach the Antenna and solder a new antenna.

To reassemble your device, follow these instructions in reverse order.