



VTech Touch and Swipe Baby Phone

Touchscreen Contact Cleaning

It is possible for the screen to become unresponsive. This can be due to the contacts becoming dirty and this guide will show necessary steps to clear the touchscreen contacts.

Written By: Sean Webb





TOOLS:

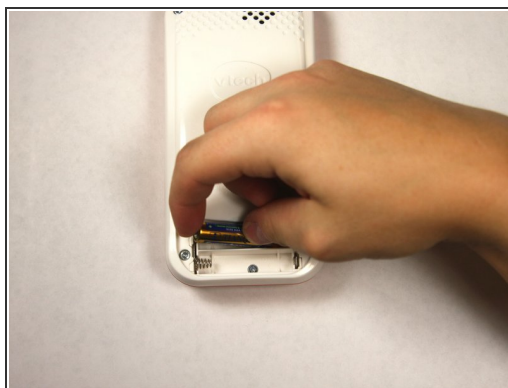
- [Phillips #1 Screwdriver](#) (1)
 - [Phillips #0 Screwdriver](#) (1)
-

Step 1 — Battery



- Using a Phillips #1 screwdriver, remove the 4.8mm Phillips #1 screw on the battery cover by twisting the screwdriver counter-clockwise.

Step 2



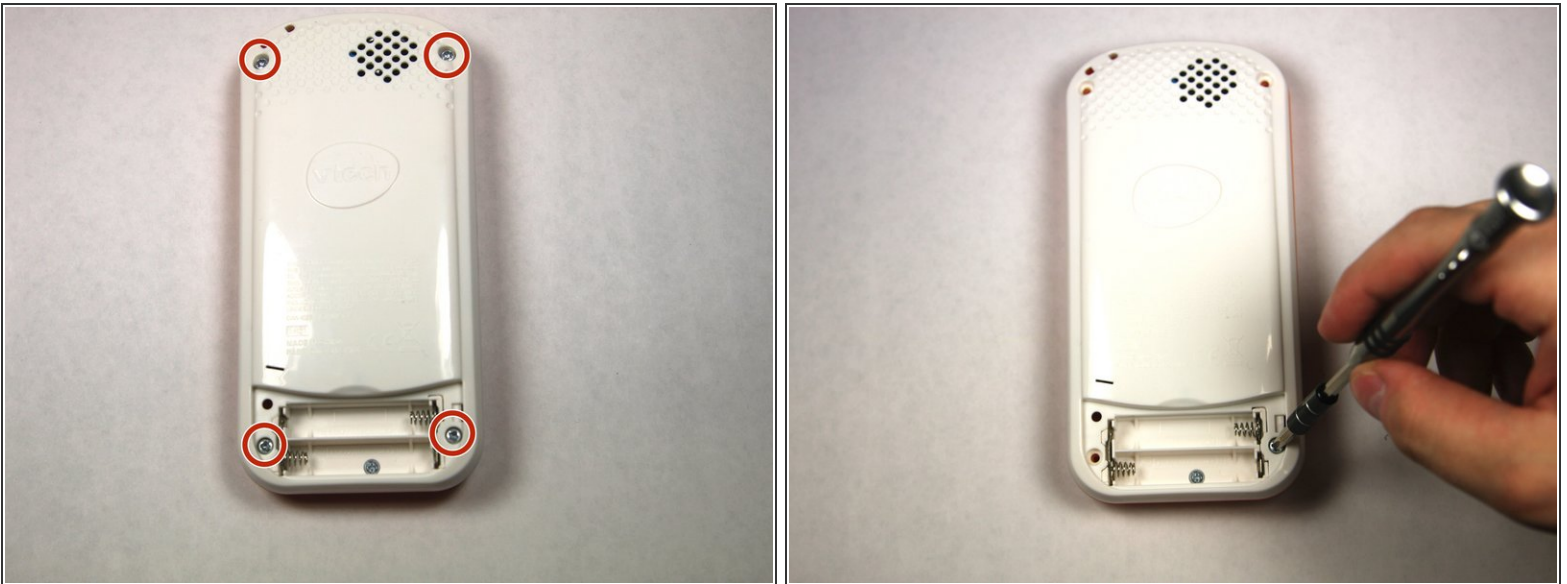
- Then simply remove the two AAA batteries by pulling on one end of the battery and lifting it straight out.

Step 3



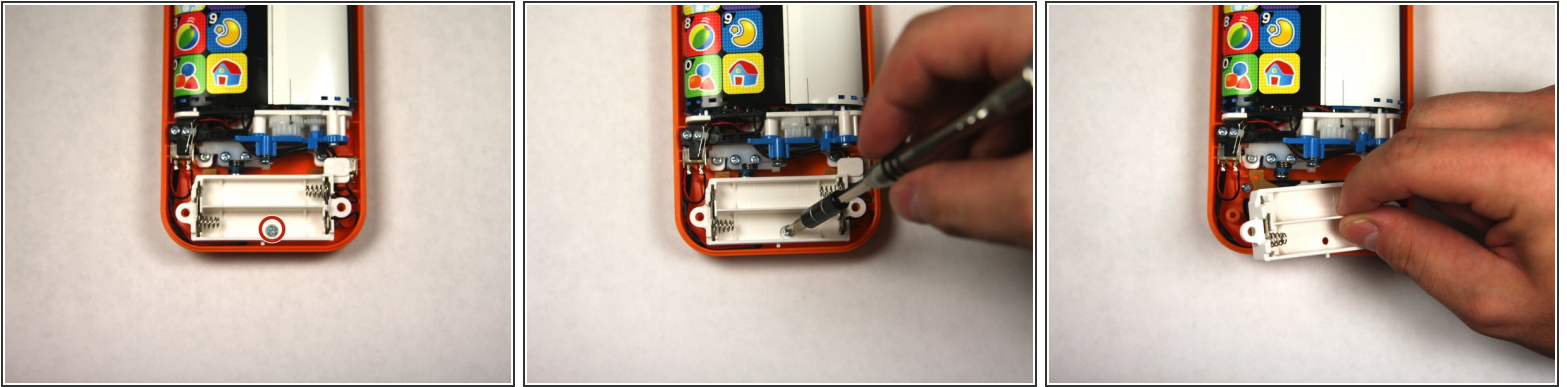
- Take care when you want to close it. There is a notch.
- First you have to hook up that notch.
- Then firmly use a PH1 screwdriver to secure it.

Step 4 — Repairing VTech Touch and Swipe Baby Phone Screen Alignment



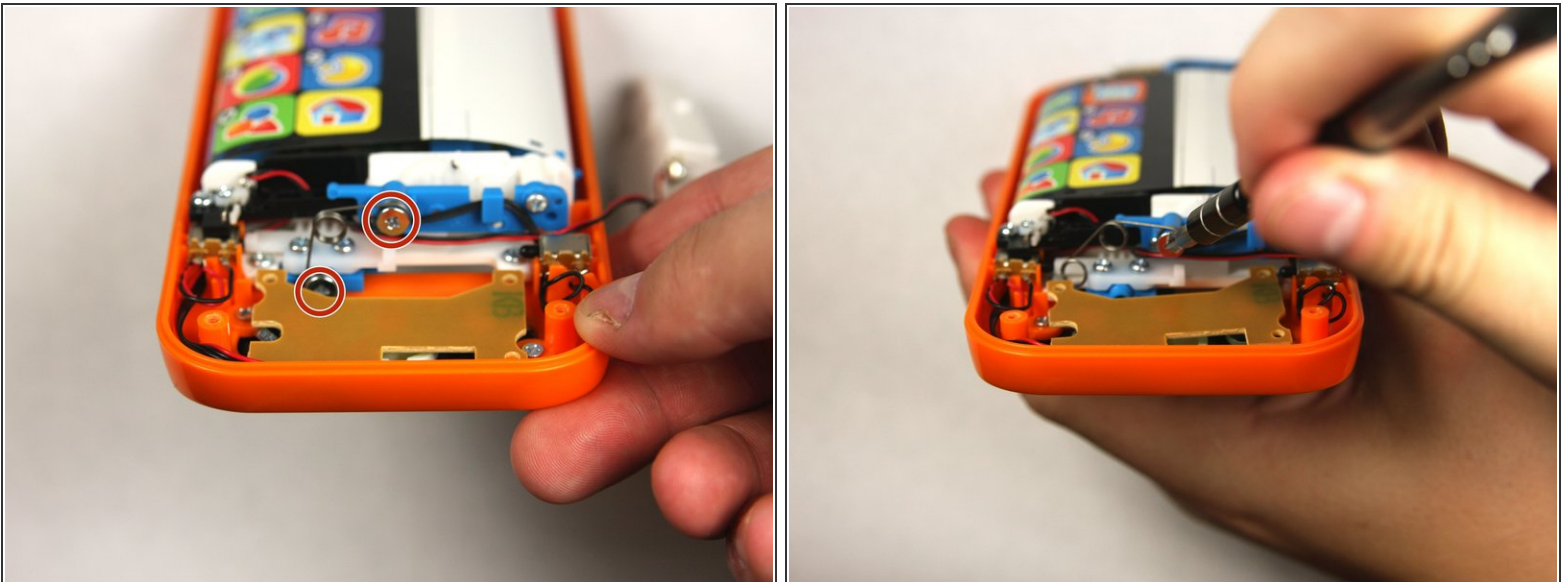
- Remove 4 13.8mm screws holding the device back using a Phillips #1 screw driver.

Step 5



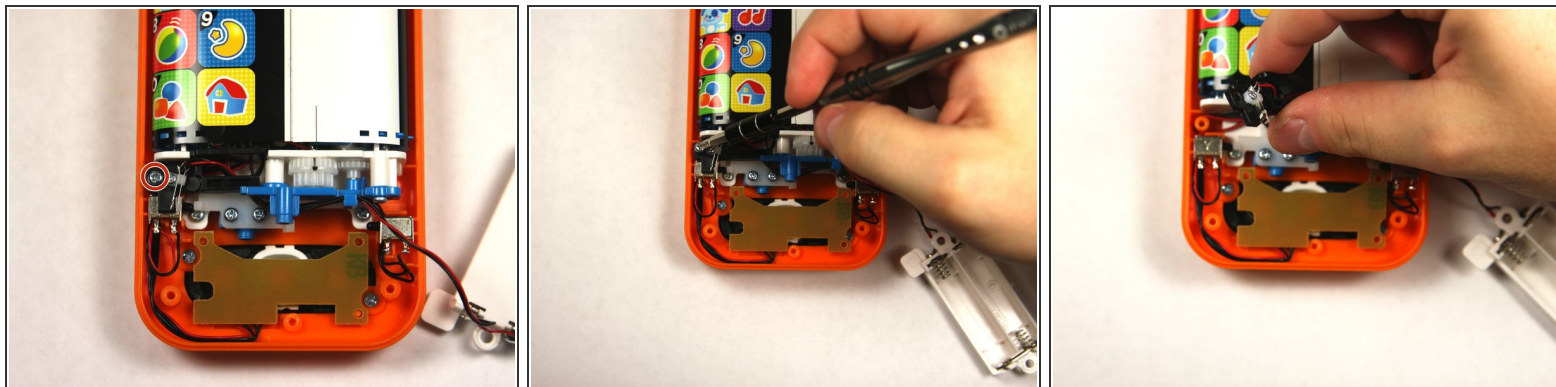
- Removed 1 4.8mm phillips head screw with a #0 Phillips head screw driver and lift away battery pack being conscientious of wires.

Step 6



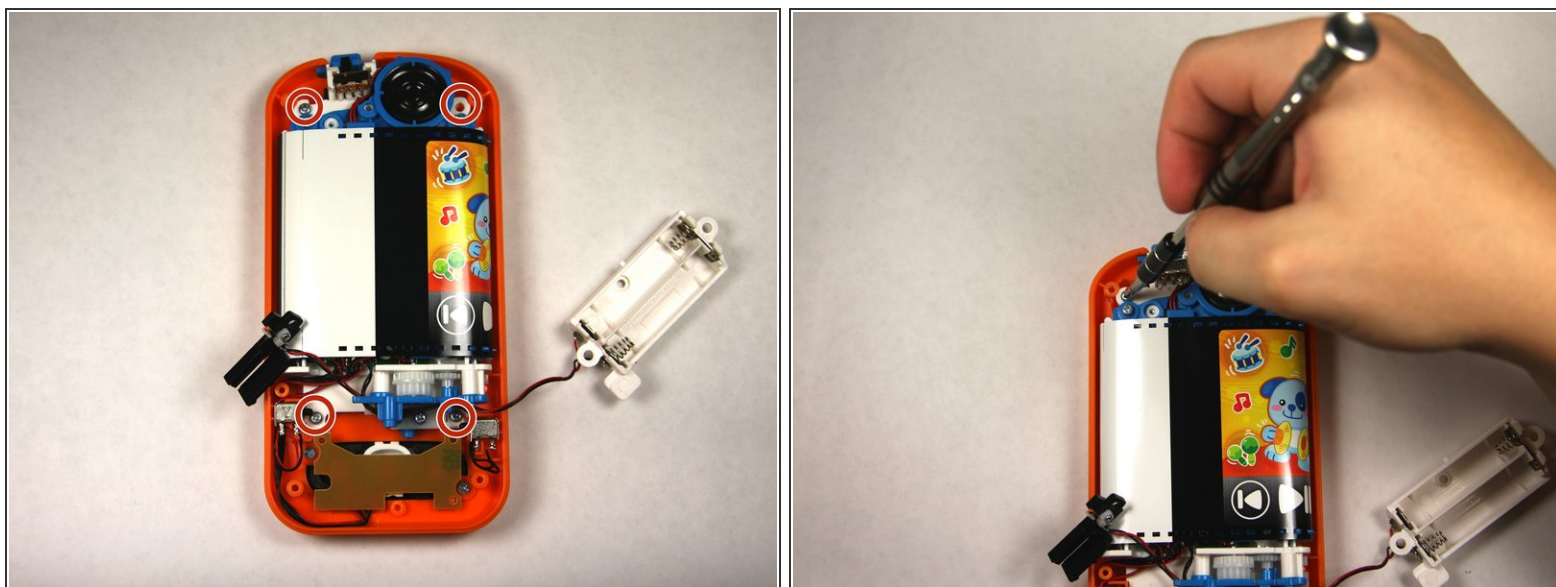
- Remove 2 7.2mm phillips head screws with a #0 Phillips head screw driver.
- Once the screws have been removed slide off the spring.

Step 7



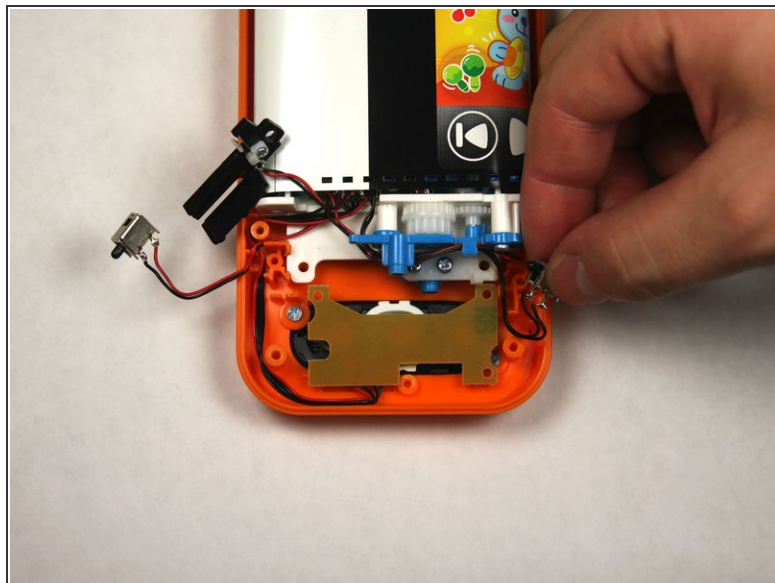
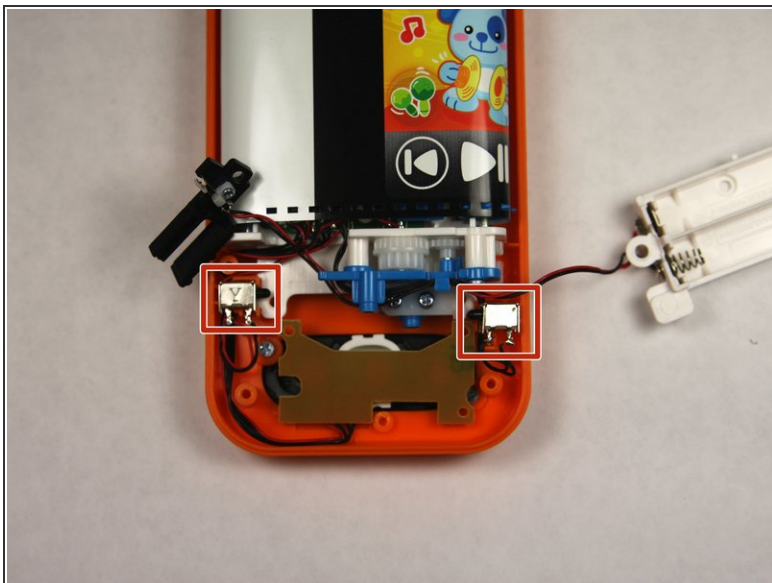
- Removed 1 7.5mm phillips screw with a #0 Phillips screw driver.
- Once the screw has been removed lift up the black plastic piece.

Step 8



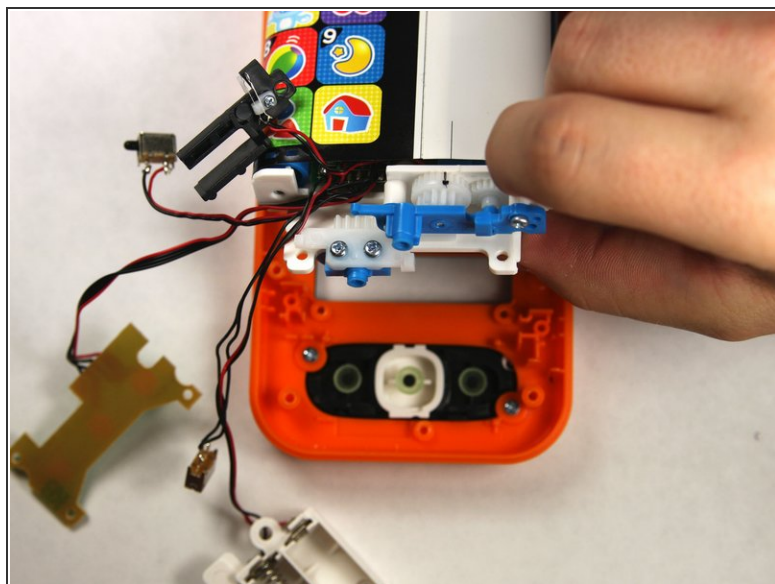
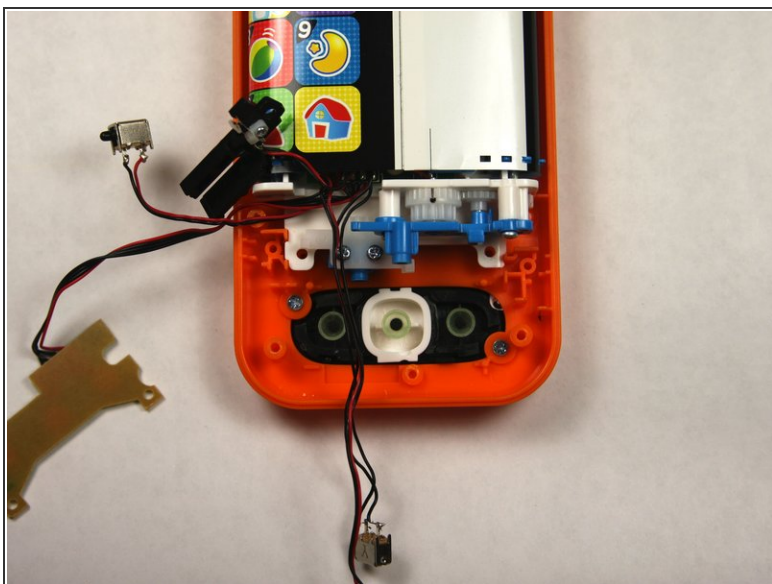
- Remove 4 7.5mm Phillips head screws with a #0 Phillips screw driver.

Step 9



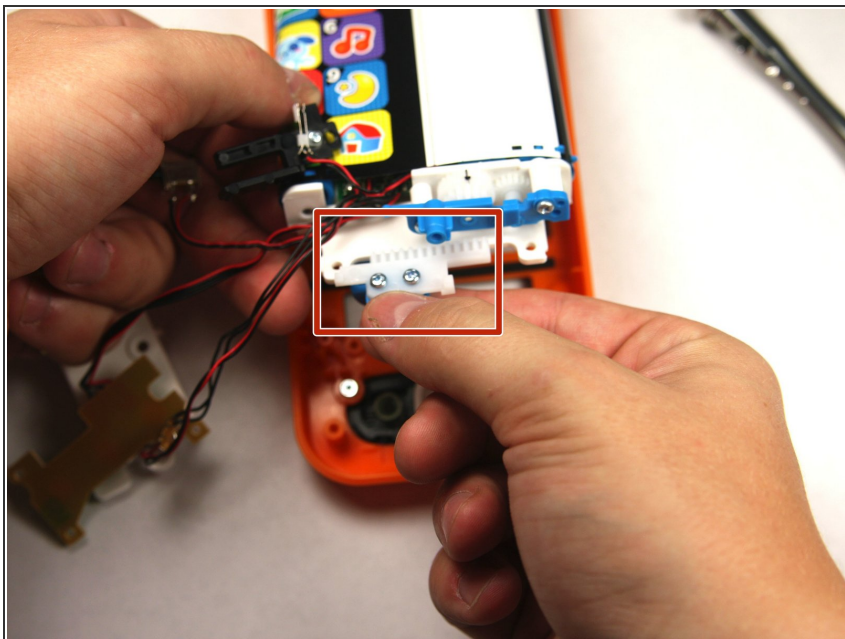
- Remove the two buttons, noting how wires are placed for reassembly.

Step 10



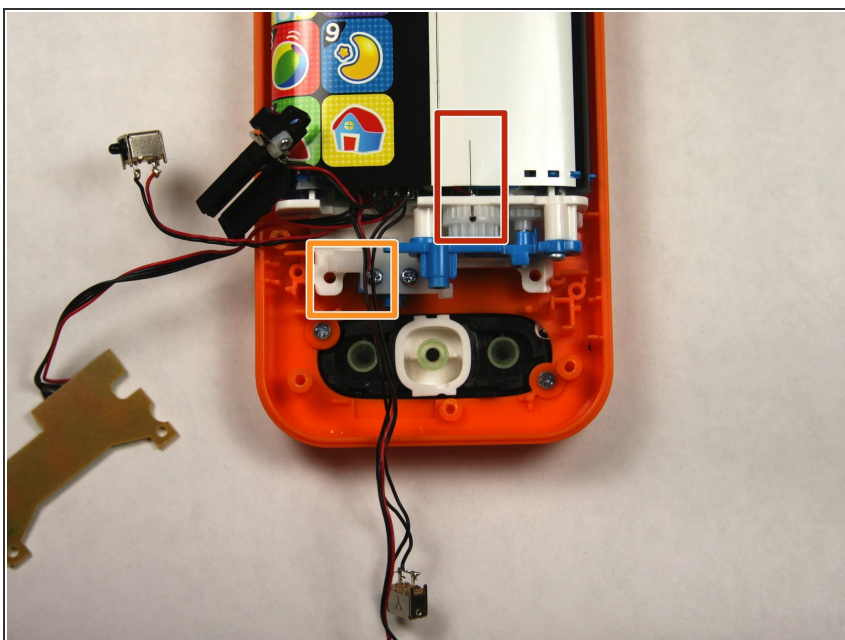
- Lift the button board up and away to clear room for lifting motherboard.
- Tilt assembly up but being wary that it is still attached to front panel.

Step 11



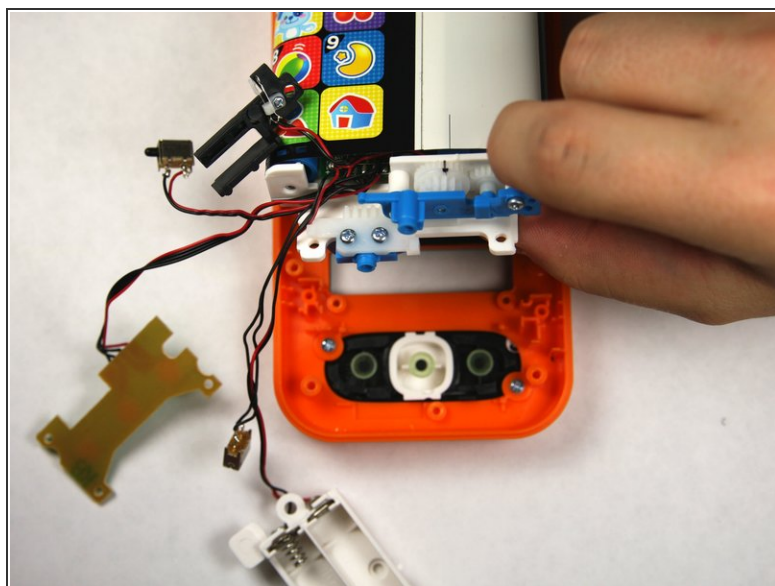
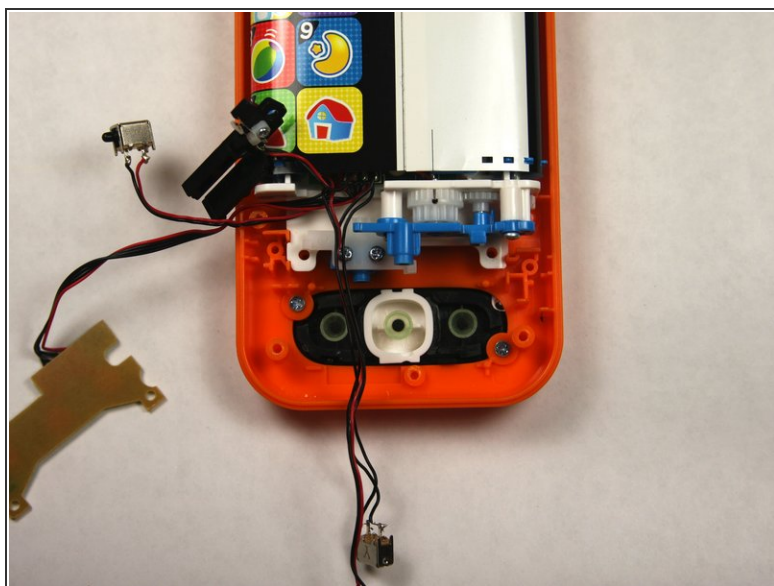
- Slide the toothed slider towards you to remove.

Step 12



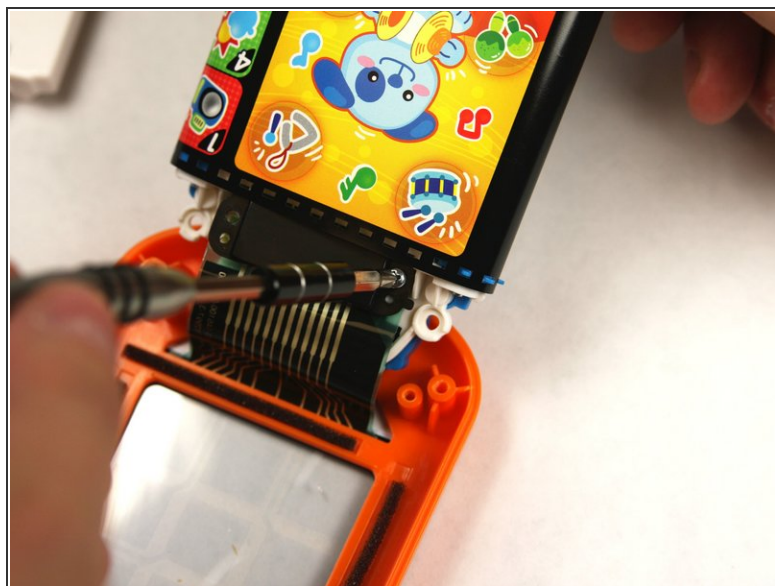
- First with the toothed slider removed align the two black lines together by moving the belt back and forth.
- Once aligned reinsert the toothed slider at the exact point shown.

Step 13 — VTech Touch and Swipe Baby Phone Touchscreen Contact Cleaning



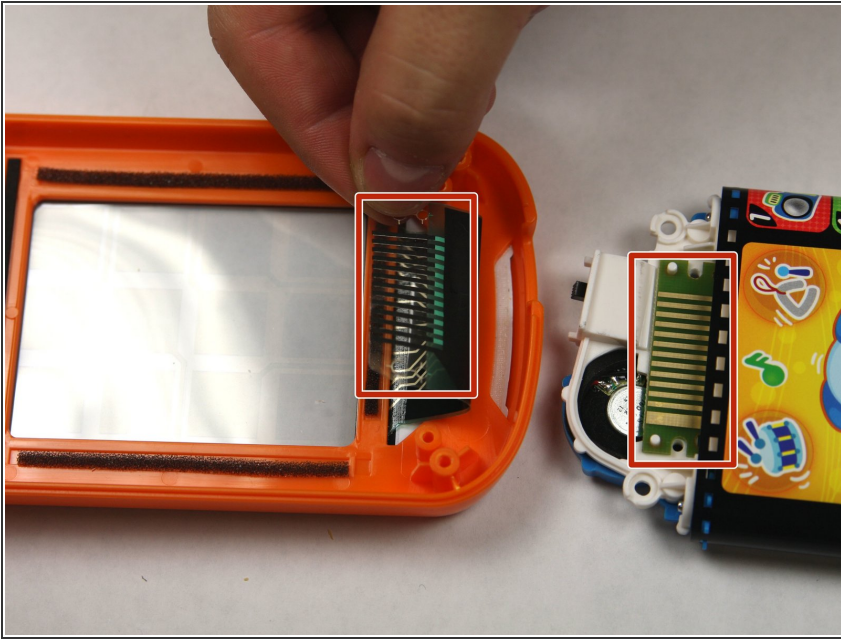
- Lift the assembly to gain access to connection point under the assembly.

Step 14



- Remove 2 7.5mm long Phillips screws with a #0 Phillips screw driver.

Step 15



- With connector removed clean both boxed sections with rubbing alcohol on a cotton swab. Allow time to properly dry before reassembling.

To reassemble your device, follow these instructions in reverse order.