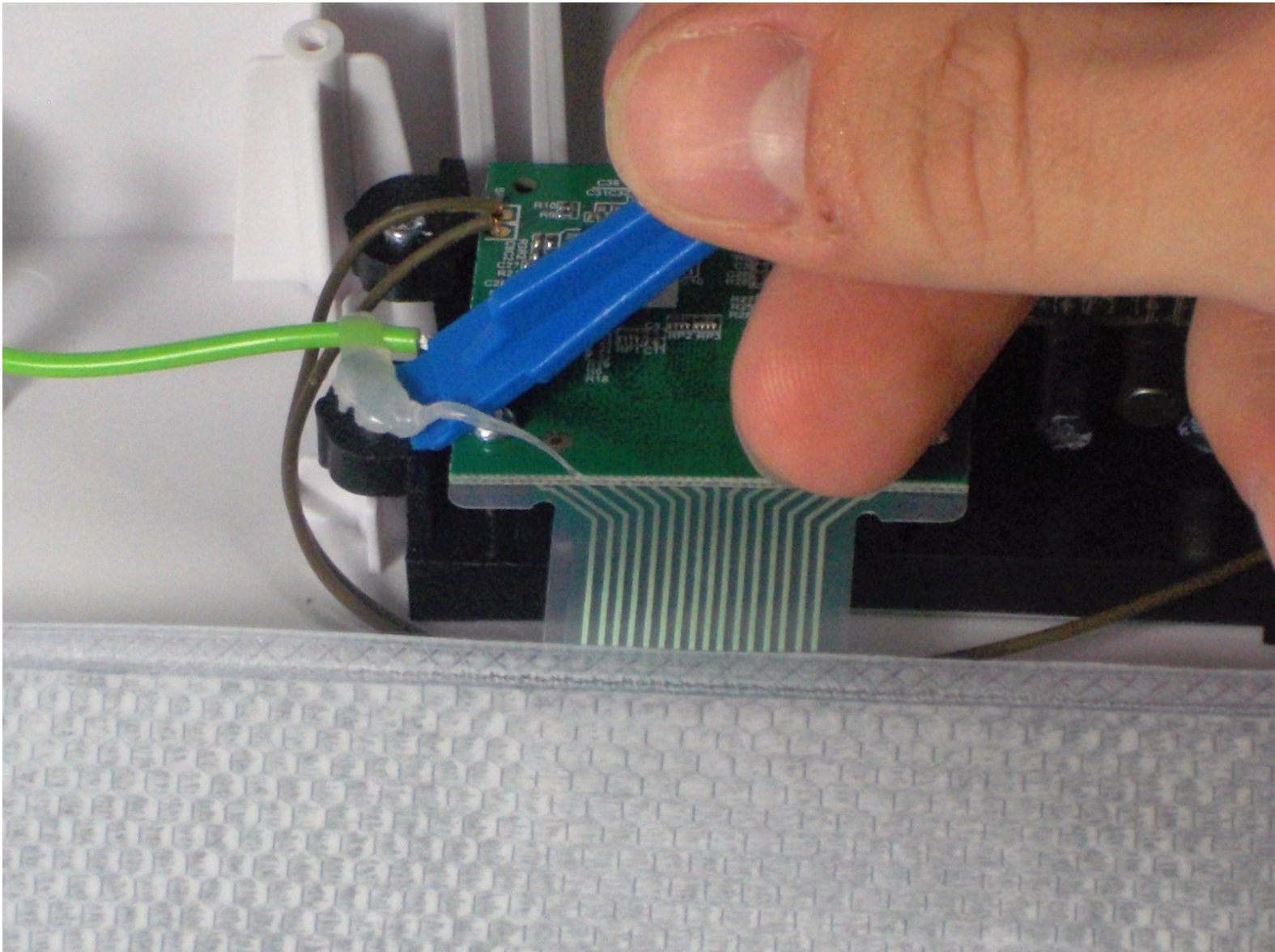




VTech Write and Learn Creative Center Magnetic Pen Replacement

Replace the magnetic pen to resolve problems related to writing on the screen of the device.

Written By: Victoria Hathaway



INTRODUCTION

The magnetic pen is an important aspect for the VTech Write and Learn Creative Center because the magnetic pen is one of the interactive ways to engage children to learn. The following repair guide addresses properly replacing the magnetic pen which will require soldering.

TOOLS:

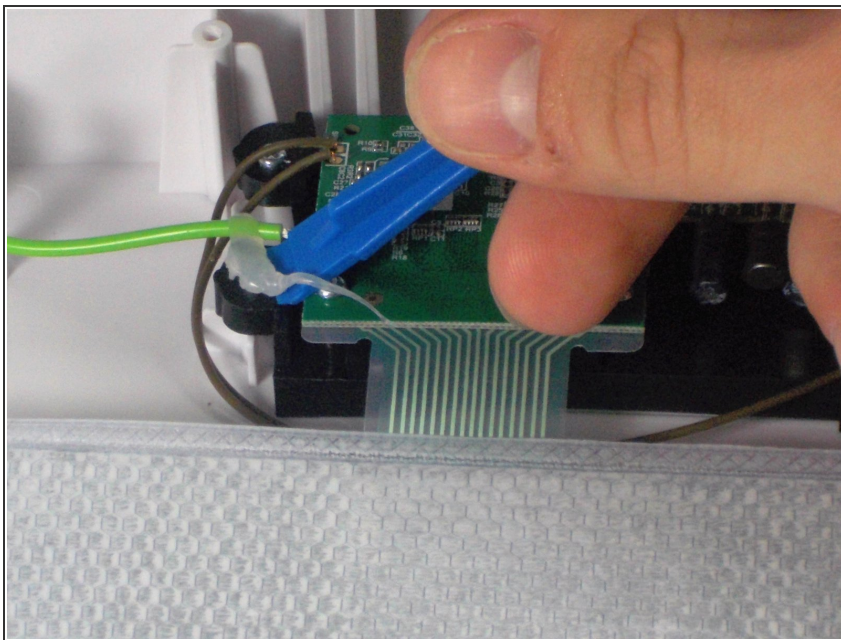
- [Phillips #2 Screwdriver](#) (1)
 - [Soldering Iron](#) (1)
-

Step 1 — Back Panel



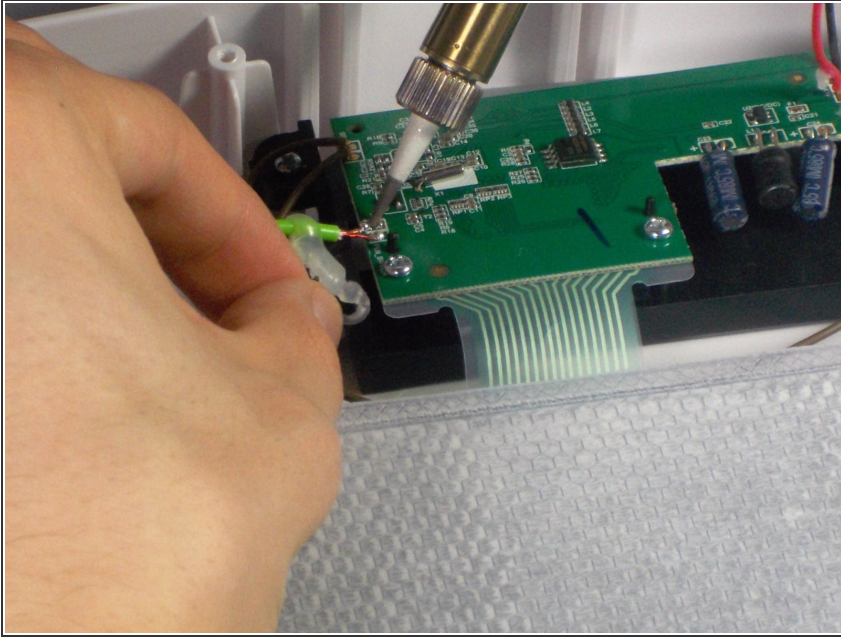
- Remove all eleven 9mm PH 2 Phillips screws securing the back of the case.

Step 2 — Magnetic Pen




- If there is any hot glue, remove it from the base of the wires.
- ⓘ During reassembly, reapply the hot glue to the connections to reinforce it's strength.

Step 3

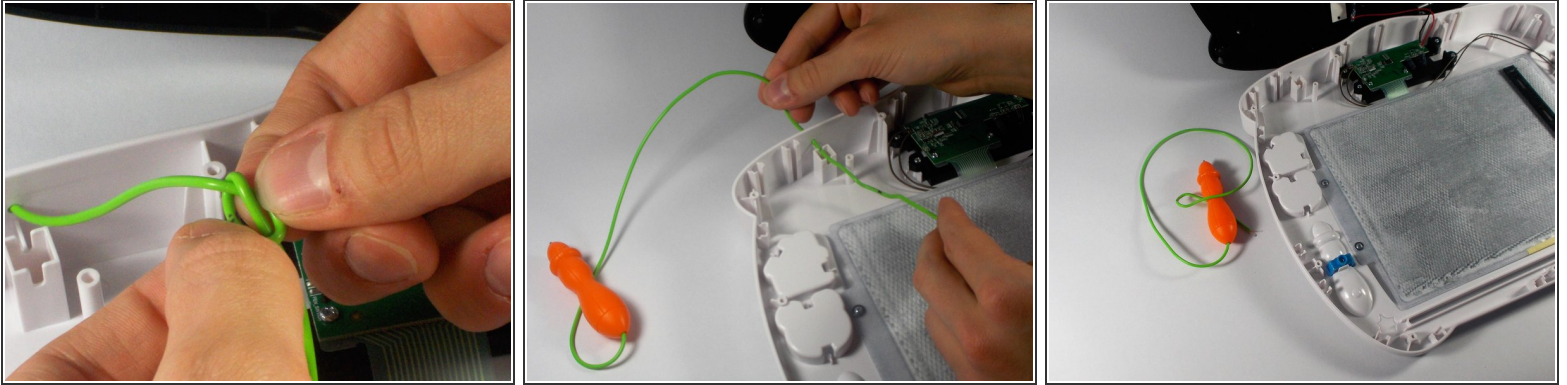


- In order to remove the magnetic pen, you must desolder the two wires connecting it to the circuit board.
- When you desolder, apply the tip of the soldering iron to the soldered joint for approximately 5 - 10 seconds.
- The soldered joint will turn to a liquid consistency. At this moment, remove the wire and soldering iron.
- Repeat each of the following steps for the second soldered joint.

 Soldering irons are dangerously hot. The soldering iron should only come in contact with joints being desoldered or soldered.

- ① Make sure to allow time for your soldering iron to heat up before using it.
- ① Make sure the tip of the soldering iron is cleaned so the tin on the tip is exposed. This will allow the soldering iron to work efficiently.

Step 4



- Undo the knot, then feed the cord from the inside of the case to the outside using the hole the company originally designed for the cord.

To reassemble your device, follow these instructions in reverse order.