



Verizon Ellipsis 10 Camera Replacement

How to remove and replace the Verizon Ellipsis 10 camera.

Written By: Mary Duran



INTRODUCTION

This guide is designed to provide you with simple steps to remove and replace the Verizon Ellipsis 10 Camera.

TOOLS:

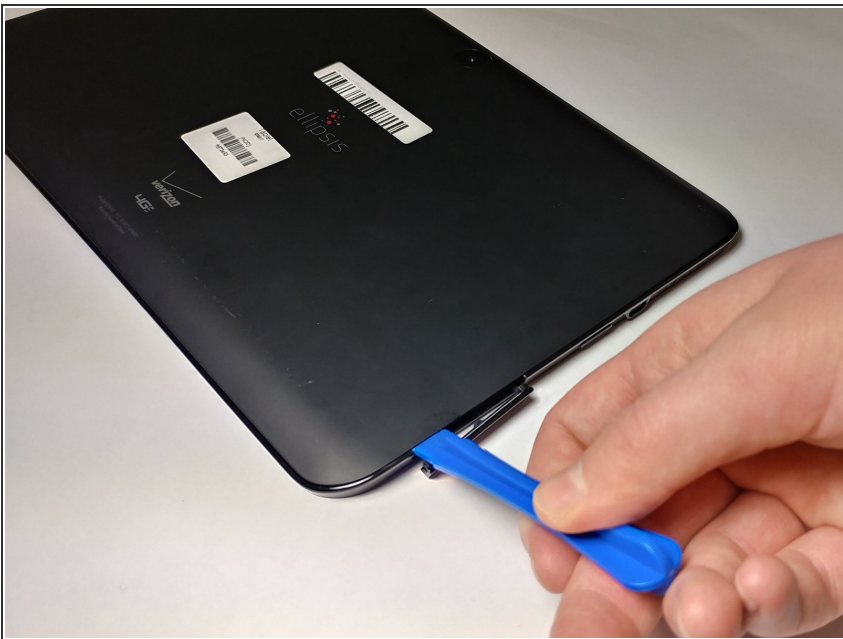
- [iFixit Opening Tools](#) (1)
 - [Tweezers](#) (1)
 - [Phillips #00 Screwdriver](#) (1)
 - [Spudger](#) (1)
-

Step 1 — Back Cover



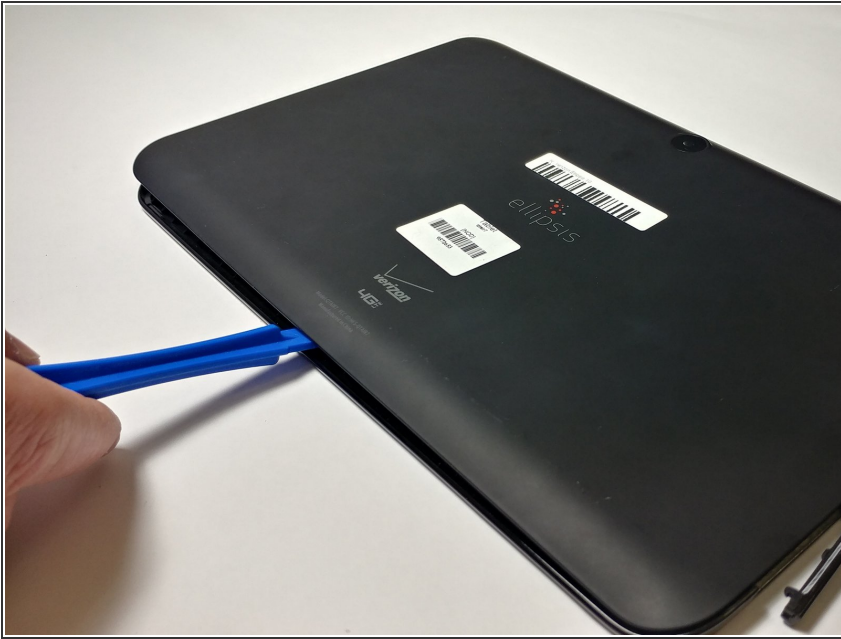
- Open the SD/SIM card cover to start prying off the back cover.

Step 2



- Start using the iFixit Opening Tool in the SD/SIM area to release the clips holding the back panel on.

Step 3



- Follow along the edge of the device to undo all of the retaining clips.

Step 4



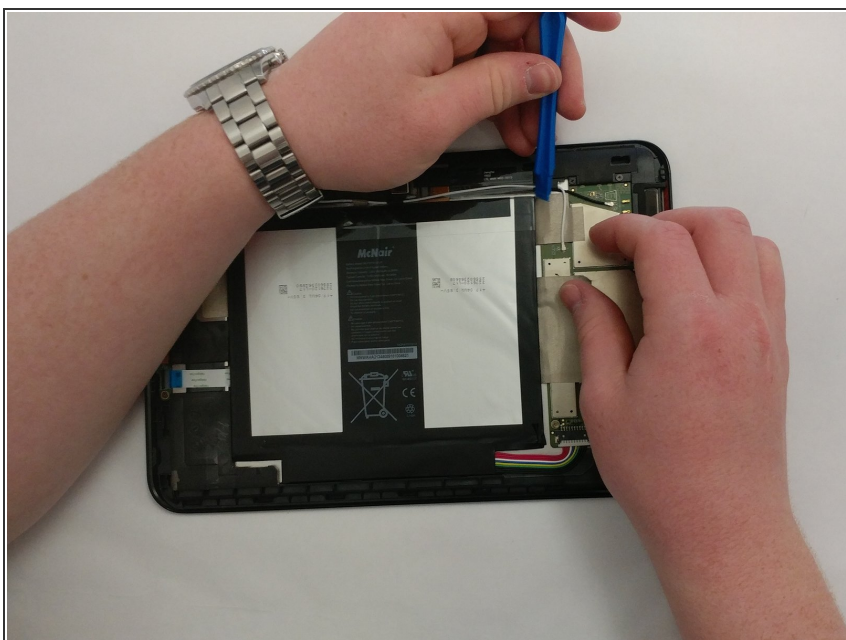
- Once all the clips are undone, the back panel should come off with little effort.

Step 5 — Battery



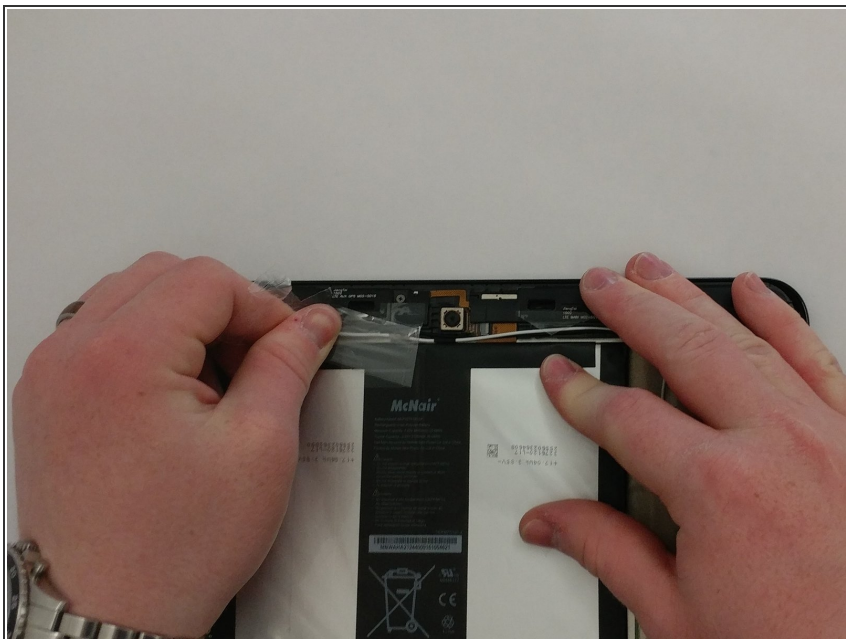
- Remove the bottom piece of tape securing the battery making sure you are not peeling up anything else in the process.

Step 6



- Remove the top piece of tape. You can use the iFixit opening tool to get a hold on it.

Step 7



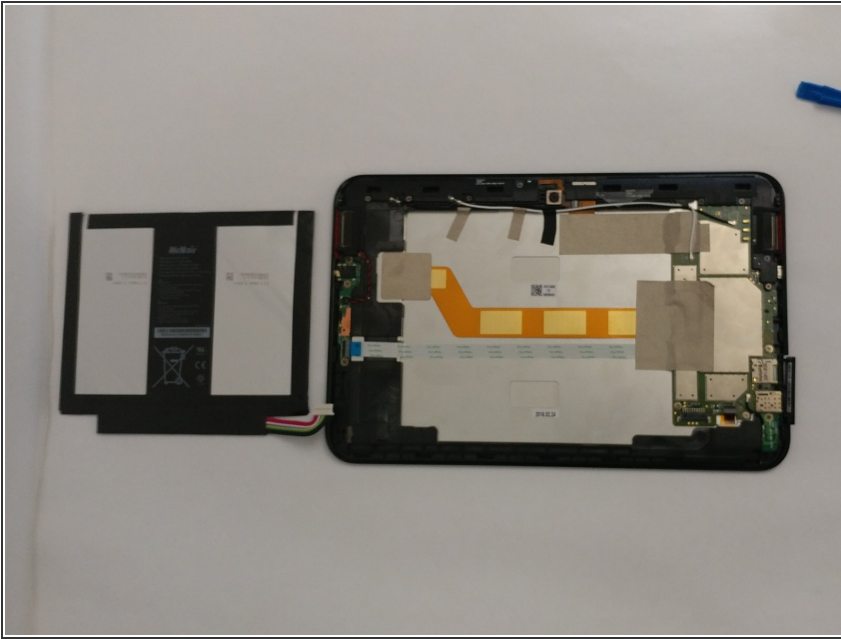
- Once you have a hold on the tape, carefully remove it making sure you aren't damaging the battery in the process.

Step 8



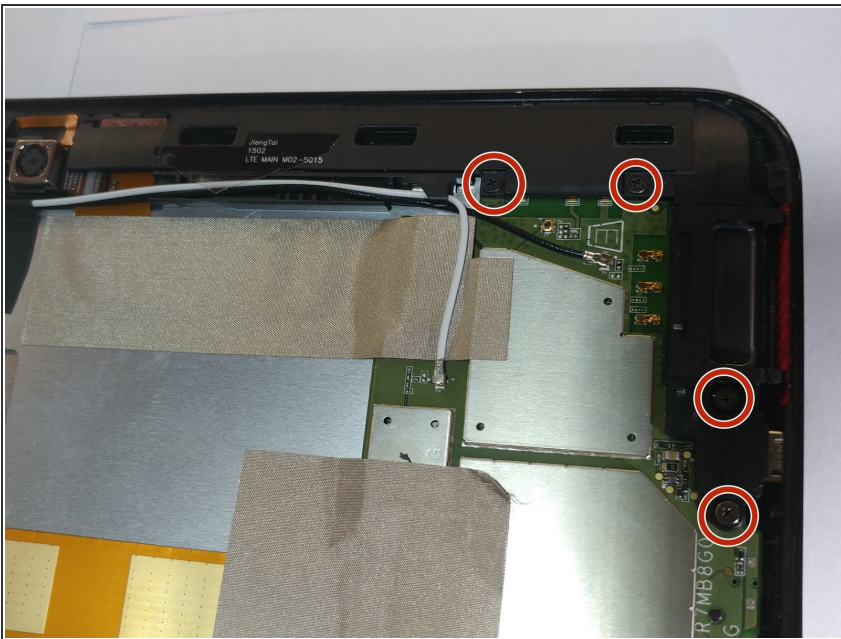
- Unplug the battery power connector by sliding the white plastic plug down away from the board.

Step 9



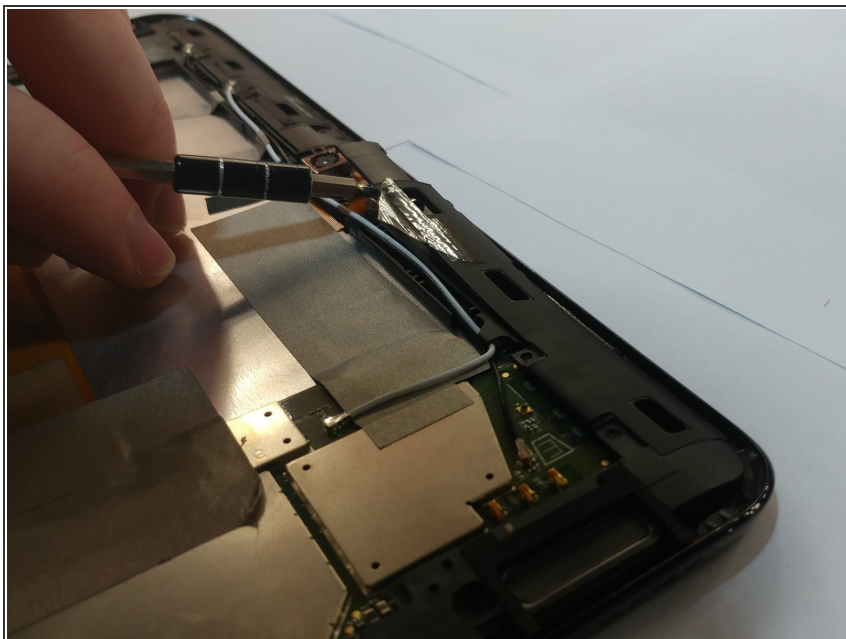
- The battery should be free to come out of the device. Make sure not to bend or damage the battery.

Step 10 — Camera



- Remove 4 M1.5 screws holding in the labeled LTE module.

Step 11



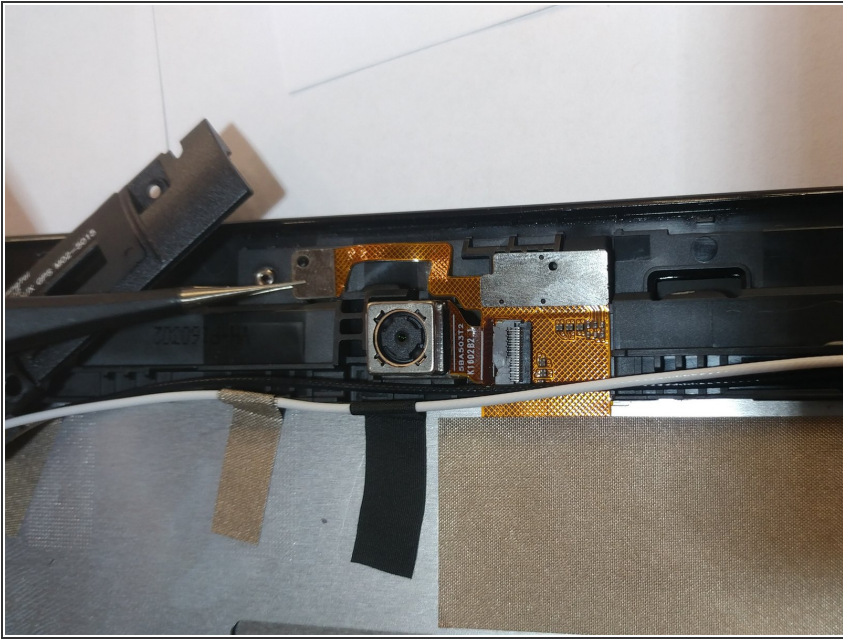
- Use a nylon spudger to pry up the module.
- ⓘ It's held in with some clips so there will be a little bit of resistance.

Step 12



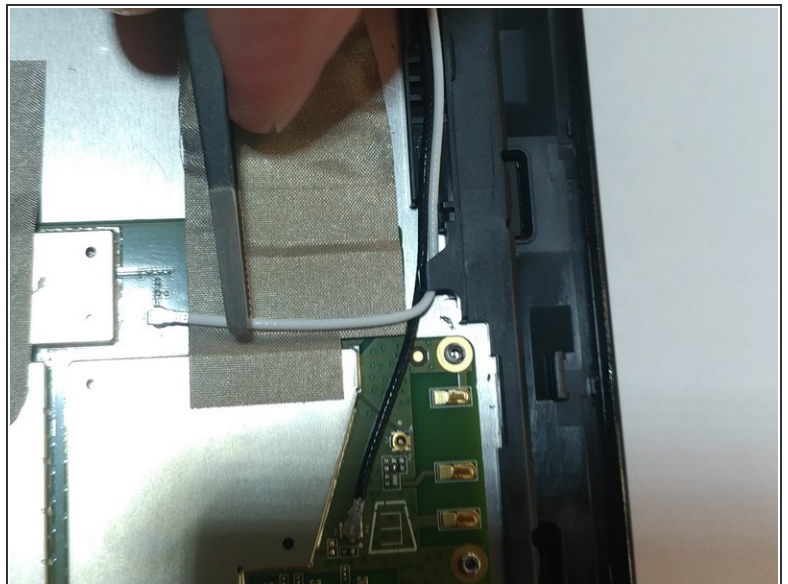
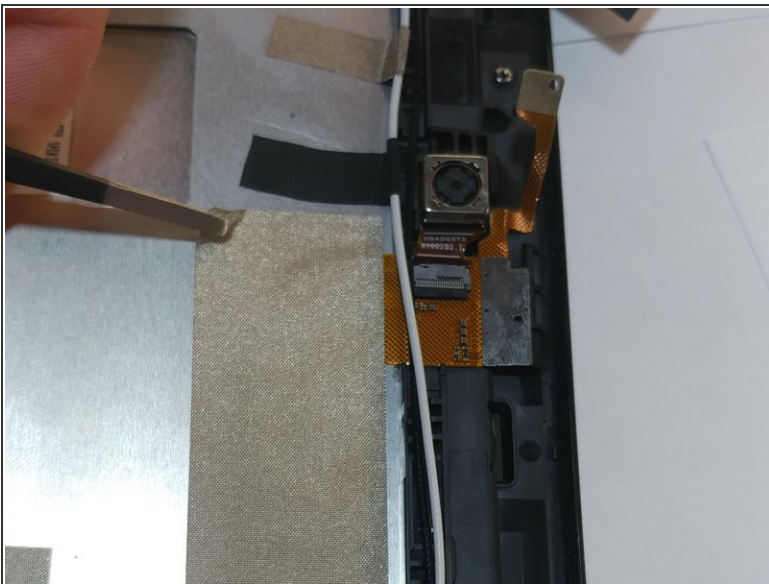
- Remove the 4 M1.5 screws holding in the labeled auxiliary LTE/GPS module.
- The module should come up with a little resistance.

Step 13



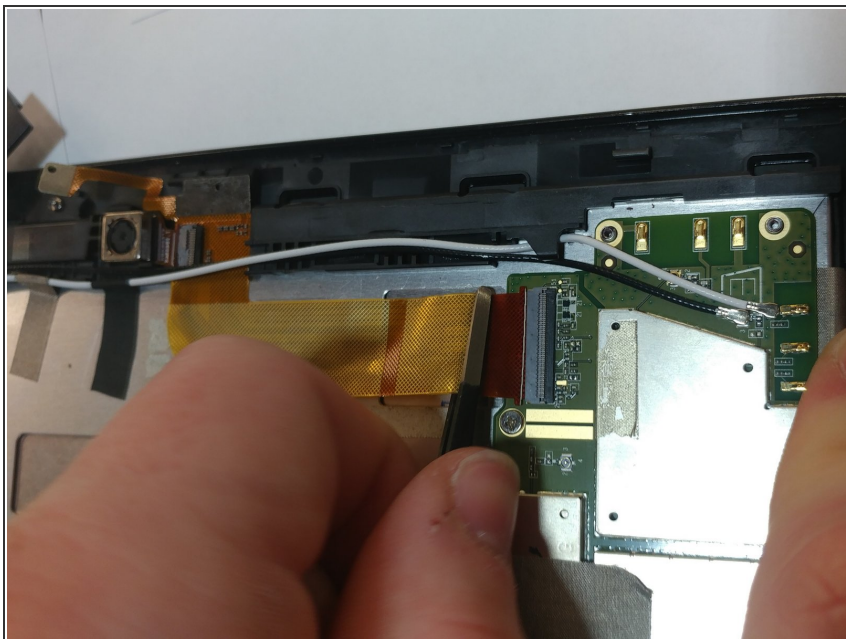
- Use a pair of tweezers to lift up the front camera off its locating post.

Step 14



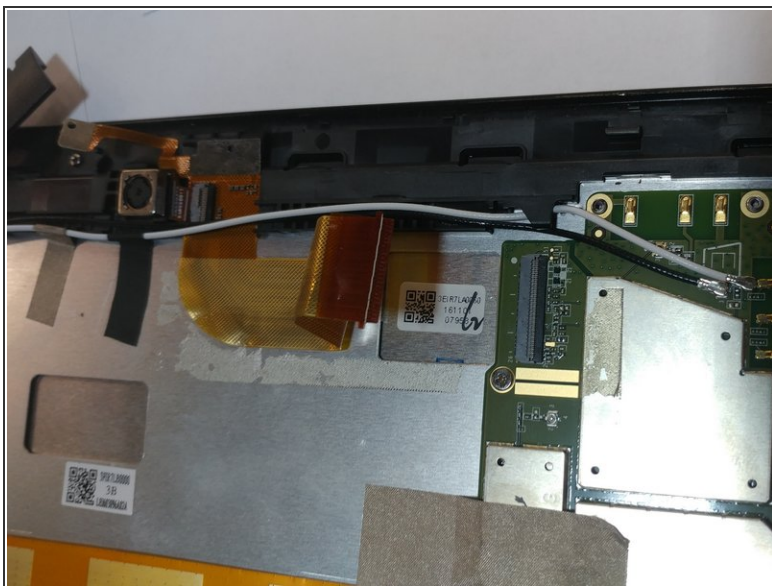
- Remove the non-conductive tape covering the camera ribbon cable.
- You may need to remove the white antenna cable to remove the tape.

Step 15



- Carefully unplug the ribbon cable from the motherboard.

Step 16



- Peel up the ribbon cable carefully as it is glued to the device.
- After having peeled up the cable, the cameras should be free to come out of the device.

To reassemble your device, follow these instructions in reverse order.