



Verizon Ellipsis 10 WiFi Module Replacement

How to remove and replace the Verizon Ellipsis 10 WiFi module.

Written By: Mary Duran



INTRODUCTION

This guide is designed to show how to replace the WiFi module in the Verizon Ellipsis 10.



TOOLS:

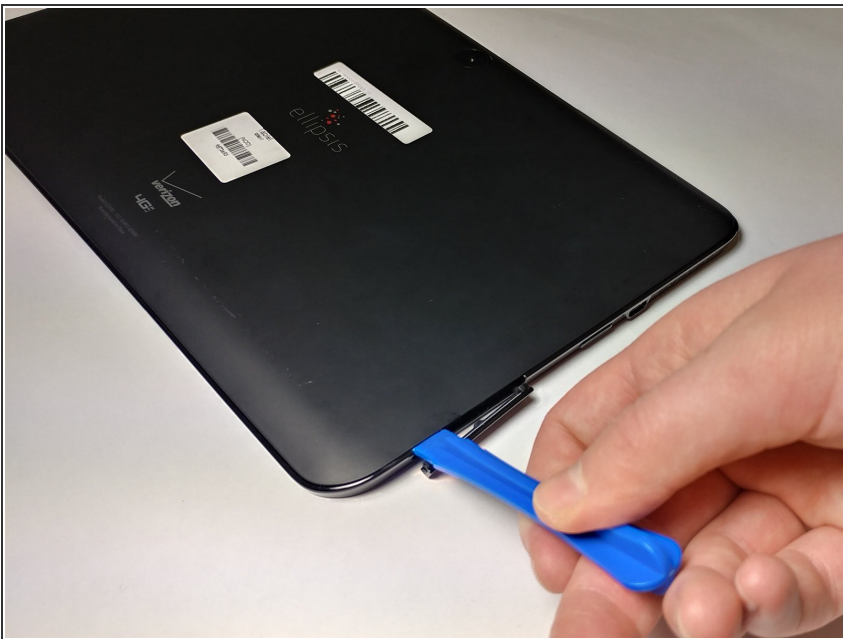
- [iFixit Opening Tools](#) (1)
 - [Phillips #00 Screwdriver](#) (1)
-

Step 1 — Back Cover



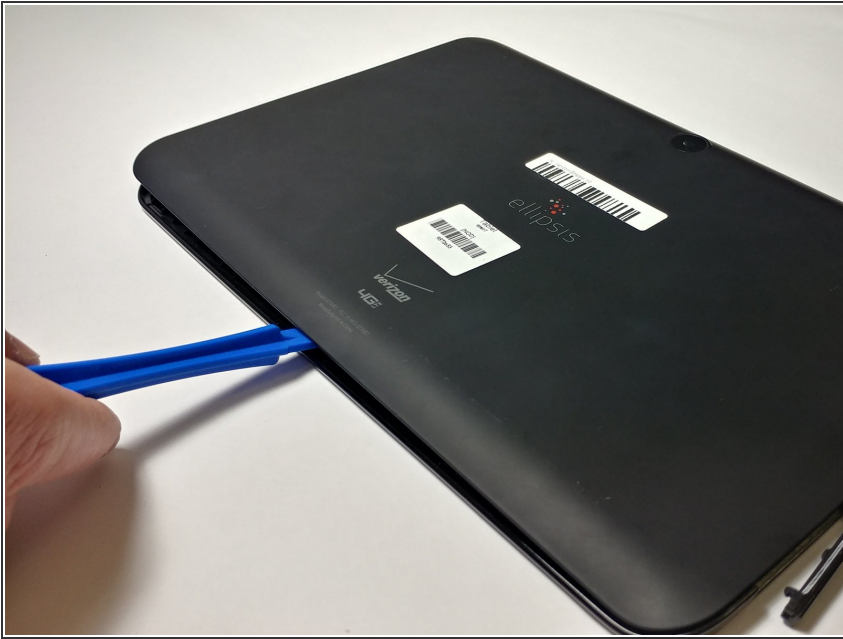
- Open the SD/SIM card cover to start prying off the back cover.

Step 2



- Start using the iFixit Opening Tool in the SD/SIM area to release the clips holding the back panel on.

Step 3



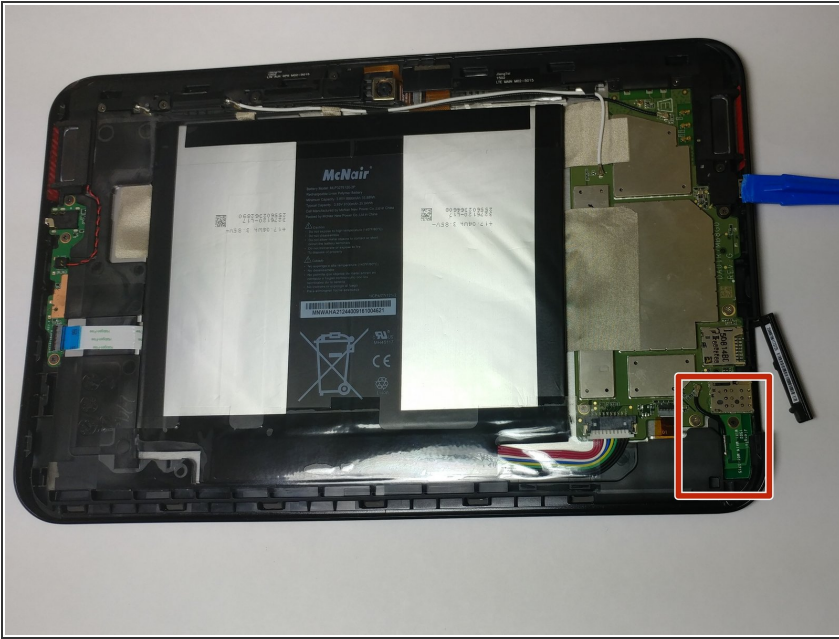
- Follow along the edge of the device to undo all of the retaining clips.

Step 4



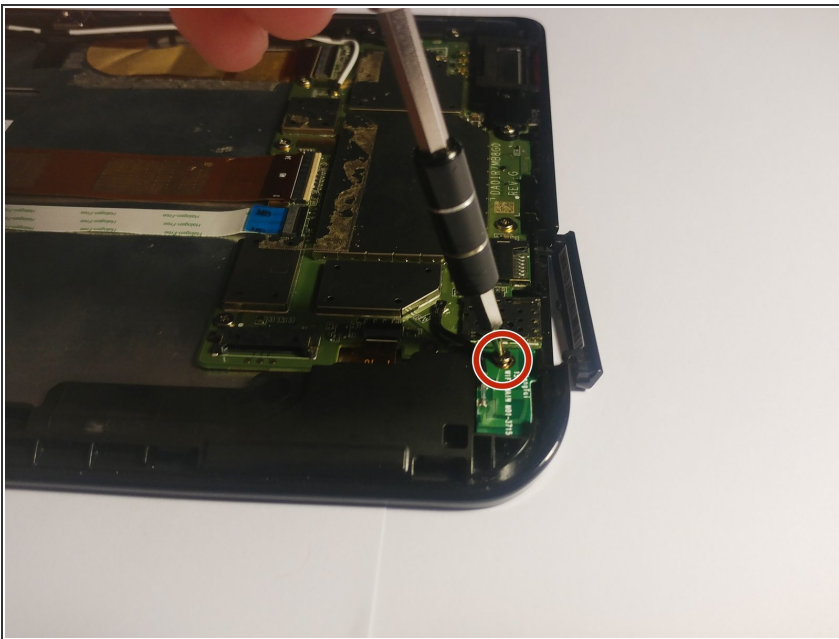
- Once all the clips are undone, the back panel should come off with little effort.

Step 5 — WiFi Module



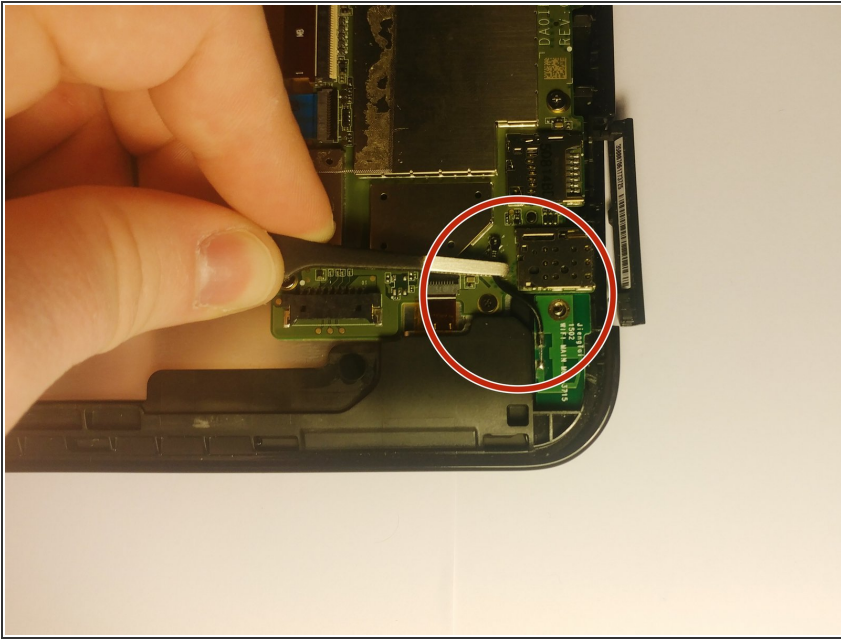
- Locate WiFi module in bottom right-hand corner.

Step 6



- Unscrew the M1.5 screw using a Phillips #00 screwdriver.

Step 7



- Using a pair of tweezers or needle nose pliers, pull up the connecting wire.
- Lift the module out.

To reassemble your device, follow these instructions in reverse order.