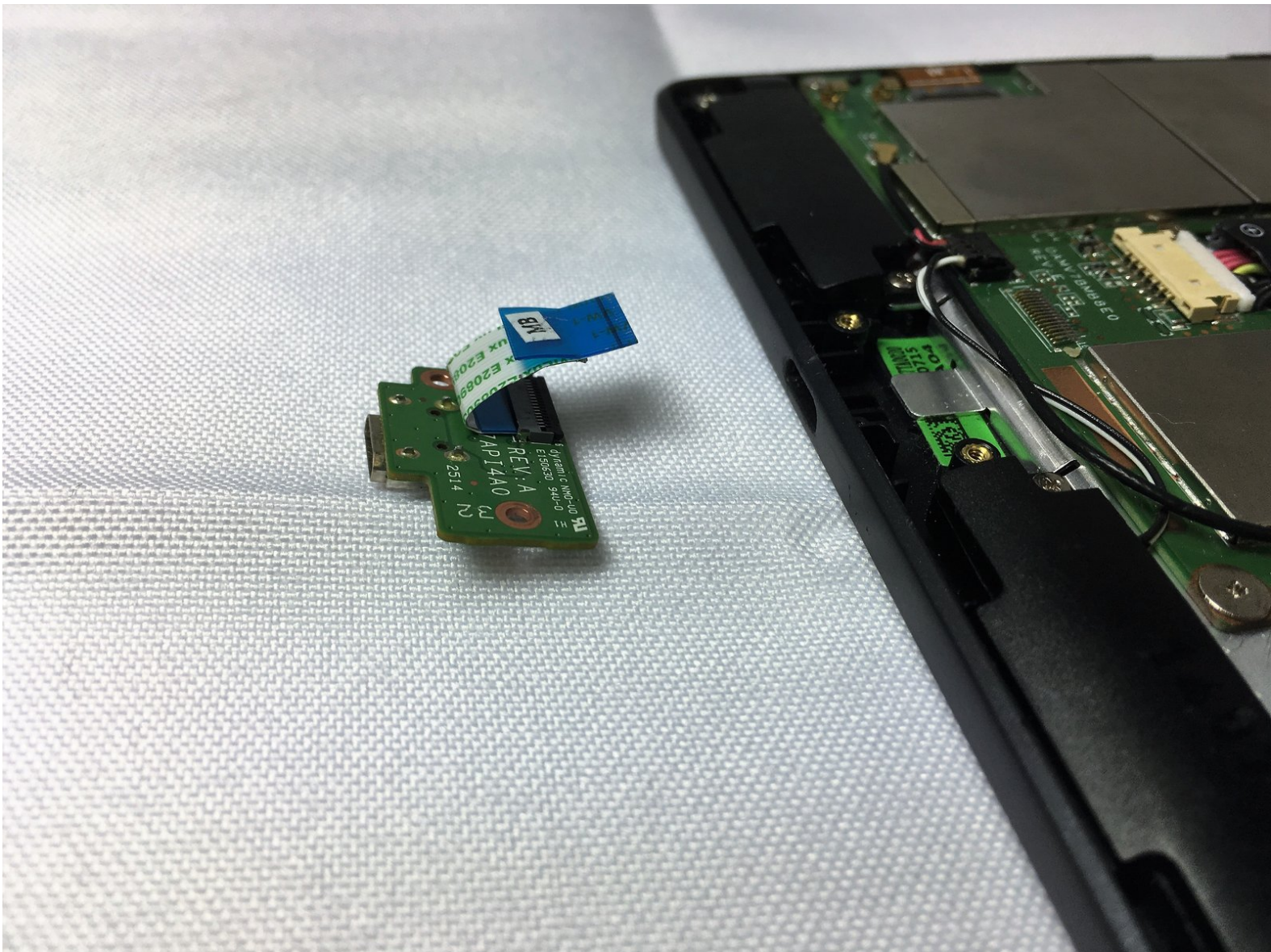




Verizon Ellipsis 7 Charging Port Replacement

Replace the charging port (Micro-USB port) on the Verizon Ellipsis 7.

Written By: Anthony Arredondo



INTRODUCTION

This guide will show you how to replace a charging port (Micro-USB) on a Verizon Ellipsis 7: invaluable to fixing a broken charging port and allowing continued use of the device. This process will need opening tools and tweezers, as well as a Phillips #00 screwdriver. Use caution, as performing the actions in this guide incorrectly could break your device.



TOOLS:

- [iFixit Opening Tools](#) (1)
- [Phillips #00 Screwdriver](#) (1)
- [Tweezers](#) (1)



PARTS:

- [Verizon Ellipsis 7 Replacement Micro-USB Port](#) (1)

Step 1 — Charging Port



- Hold down the power button until the screen goes black to turn off the device.
- Remove the SIM card from the device to prevent damage.
 - To remove the SIM card, open the SIM card cover on the side of the device.
 - Push SIM card in and pull it out after hearing a click.

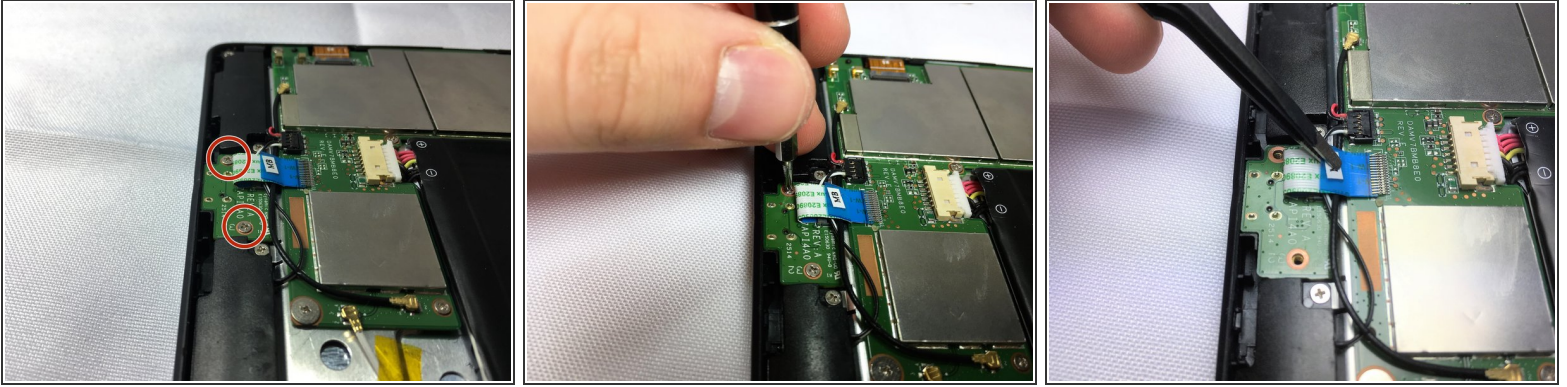
Step 2



- Take off the back panel.
- Pry open the back cover carefully with a plastic opening tool.
- Use the opening tool to disconnect the cover completely. Do not attempt to pry the back cover off with your hands.

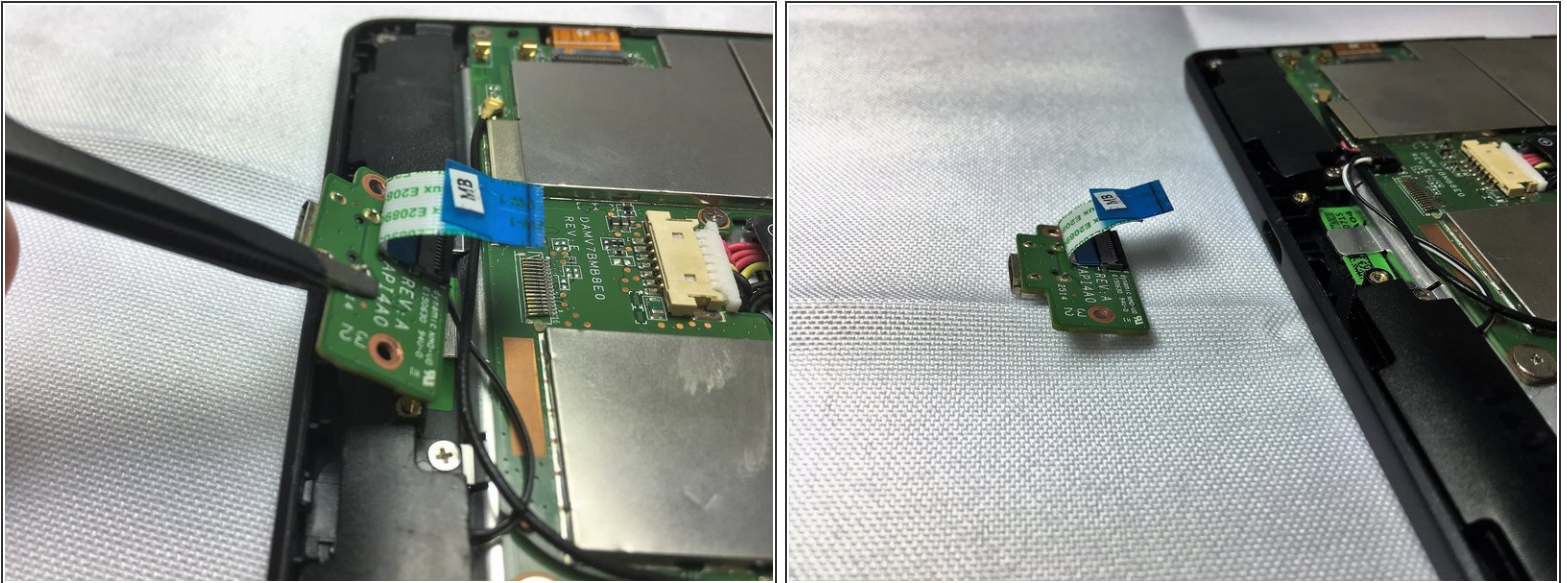
 Be sure to pry open all sides of the device. Attempting to take off the back cover when part of it is attached may snap the cover.

Step 3



- Remove the charging (micro-USB) port.
 - Unscrew the indicated screws using the Phillips #00 screwdriver.
 - ⓘ The screws shown in the picture are the more common 4.76 mm.
 - Disconnect the ribbon cable connecting the charging port board to the motherboard using tweezers.
 - Use the tweezers to grab the sides of black, plastic connector. Do not grab from the wires or try to wedge it out from the bottom.
- ⚠ Be extremely careful when disconnecting the ribbon cable. It is very delicate.

Step 4



- Remove the charging port board from the phone using tweezers.
 - Place the replacement charging port into the phone.
- ⚠ Be cautious when replacing the ribbon cable onto the new charging port board.

To reassemble your device, follow these instructions in reverse order.