



# Verizon Ellipsis 7 Screen Replacement

This guide will show you how to replace the screen on the Verizon Ellipsis 7 tablet.

Written By: Scott Mangin



## INTRODUCTION

This guide will require prying tools to get the tablet open, a Phillips #00 screwdriver, tweezers, and a spudger. This guide would be invaluable in replacing a broken screen for continued use of the Verizon Ellipsis 7. This guide will require extra precautions, as you are going to have to take out the main motherboard and scrape tape not designed to be removed. Performing the actions in this guide incorrectly could break your device.



### TOOLS:

- [iFixit Opening Tools](#) (1)
- [Heavy-Duty Spudger](#) (1)
- [Phillips #00 Screwdriver](#) (1)
- [Tweezers](#) (1)



### PARTS:

- [Screen Replacement](#) (1)

## Step 1 — Charging Port



- Hold down the power button until the screen goes black to turn off the device.
- Remove the SIM card from the device to prevent damage.
  - To remove the SIM card, open the SIM card cover on the side of the device.
  - Push SIM card in and pull it out after hearing a click.



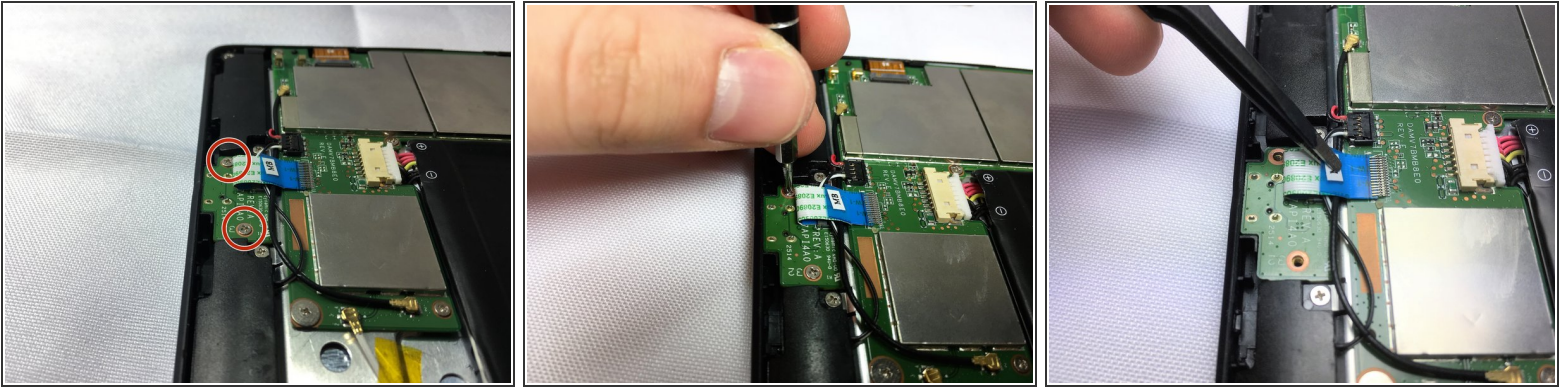
## Step 2



- Take off the back panel.
- Pry open the back cover carefully with a plastic opening tool.
- Use the opening tool to disconnect the cover completely. Do not attempt to pry the back cover off with your hands.

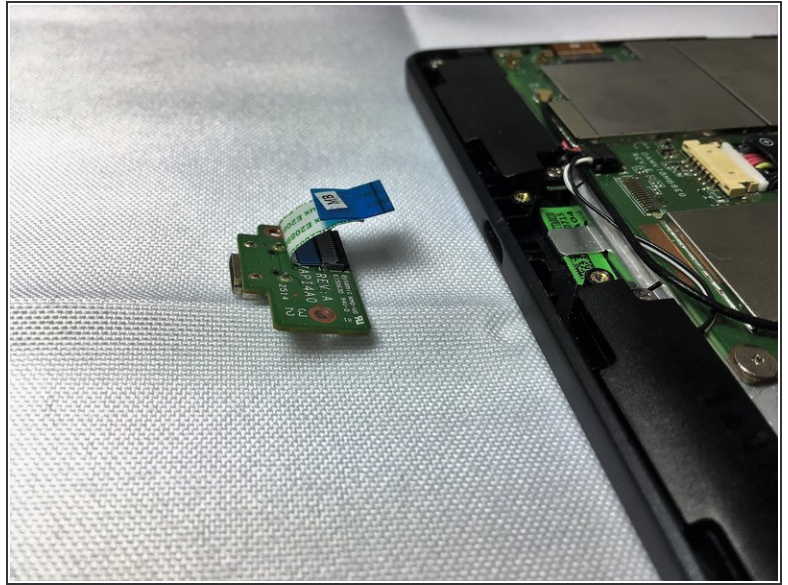
⚠ Be sure to pry open all sides of the device. Attempting to take off the back cover when part of it is attached may snap the cover.

## Step 3



- Remove the charging (micro-USB) port.
    - Unscrew the indicated screws using the Phillips #00 screwdriver.
    - ⓘ The screws shown in the picture are the more common 4.76 mm.
  - Disconnect the ribbon cable connecting the charging port board to the motherboard using tweezers.
    - Use the tweezers to grab the sides of black, plastic connector. Do not grab from the wires or try to wedge it out from the bottom.
- ⚠ Be extremely careful when disconnecting the ribbon cable. It is very delicate.

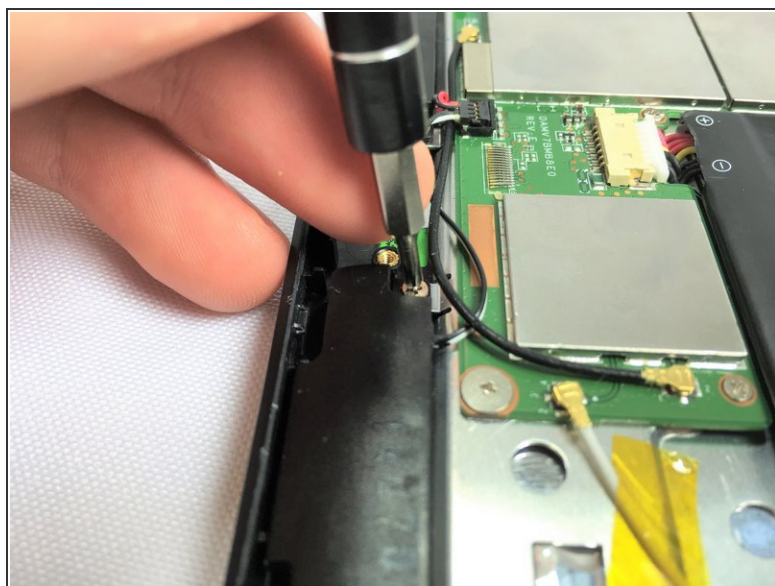
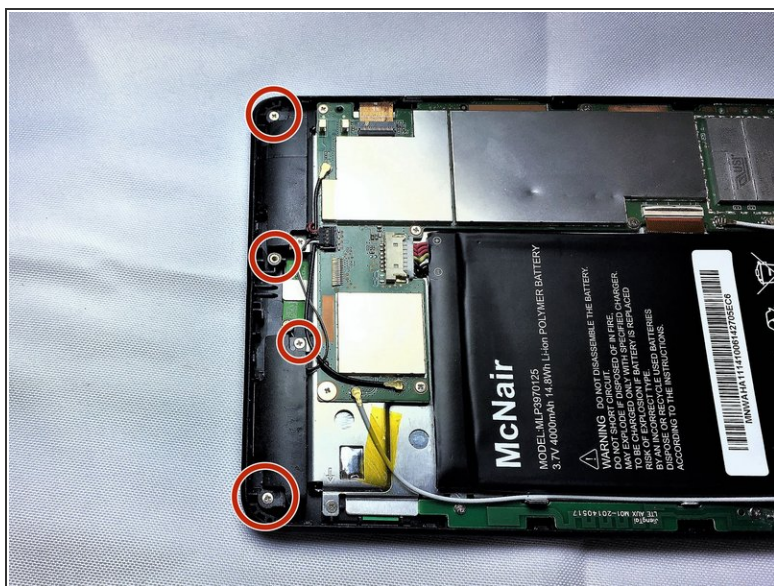
## Step 4



- Remove the charging port board from the phone using tweezers.
  - Place the replacement charging port into the phone.
- ⚠ Be cautious when replacing the ribbon cable onto the new charging port board.

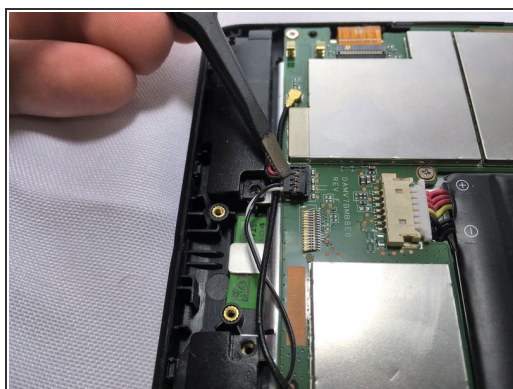


## Step 5 — Speaker



- Remove 2 screws from each speaker, 4 screws in total, using a Phillips #00 screwdriver.
- ⓘ The screws shown in the picture are the more common 4.76 mm.

## Step 6



- Using tweezers carefully lift the connector up to disconnect it from the motherboard.
- Using tweezers carefully pull the speakers up and out of device.

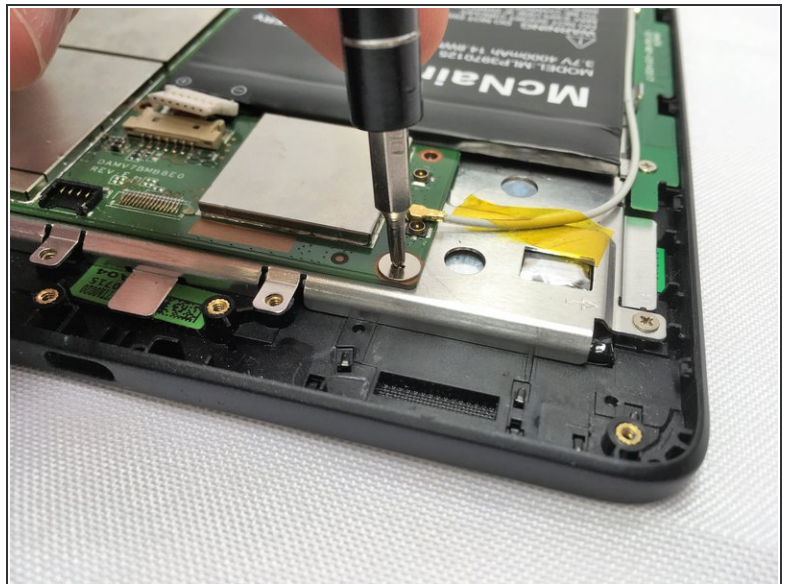


## Step 7 — Screen



- Use the tweezers to carefully disconnect the power cable bundle from the motherboard.

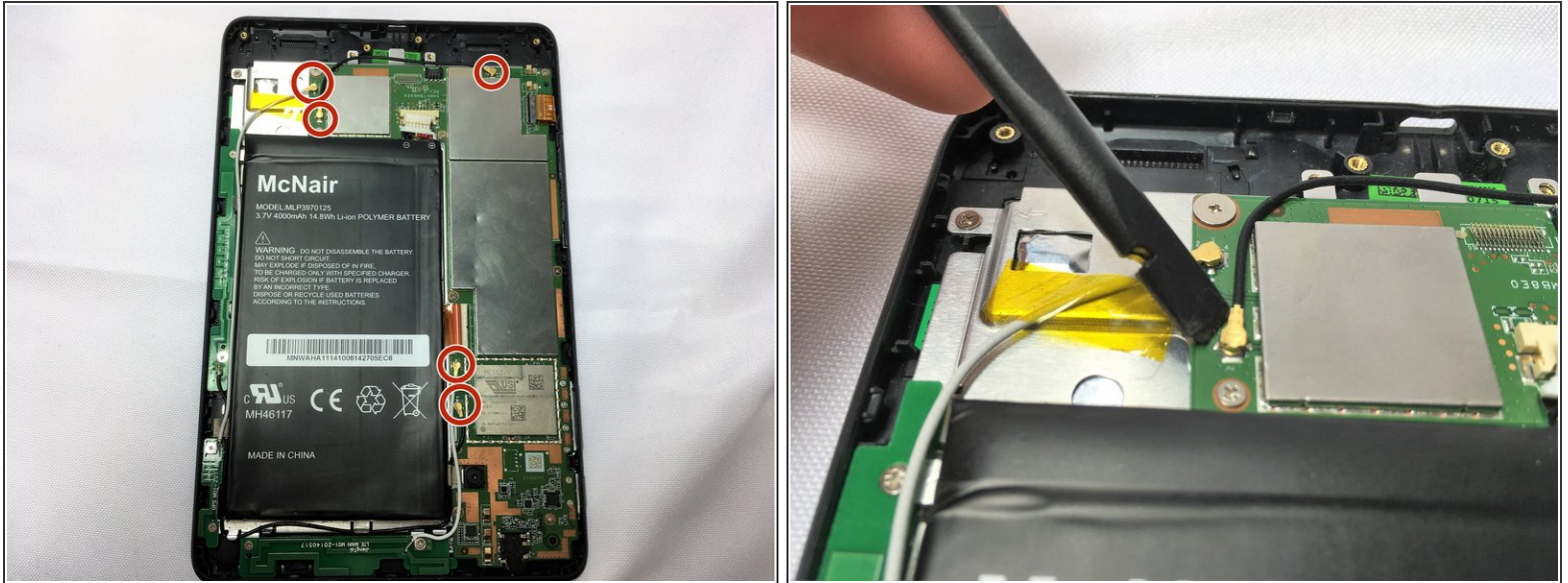
## Step 8



- Remove the 10 screws from the motherboard using a Phillips #0 screwdriver.
- ❗ The screws shown in the first picture are the more common 4.76 mm.
- ❗ The screw shown in the second picture is shorter, 3.175 mm, than the rest of the screws

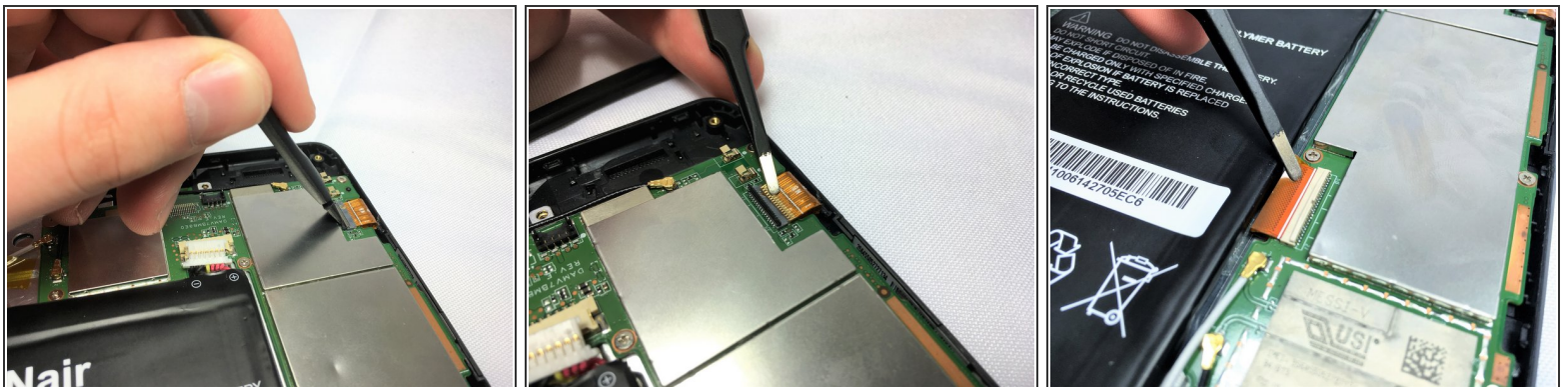


## Step 9



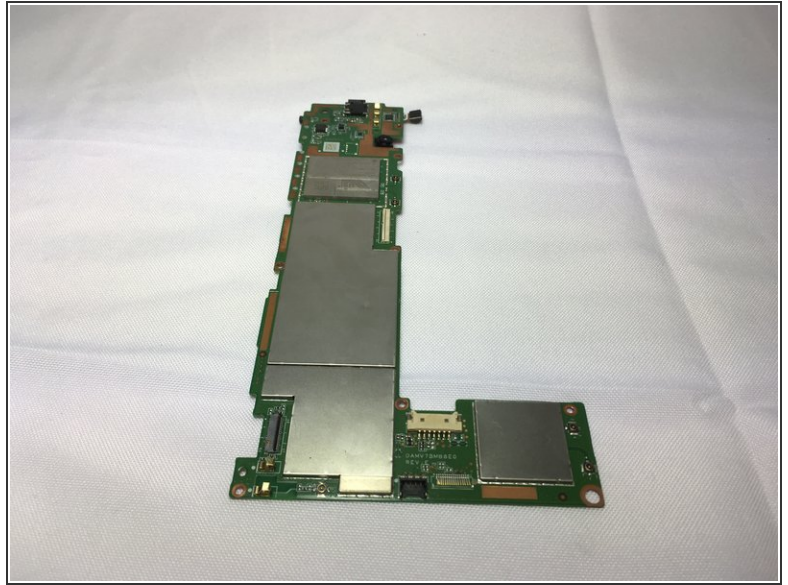
- Remove the 5 antenna cable connectors from the motherboard using a spudger.

## Step 10



- Disconnect the two ZIF connectors that are connected to the motherboard with a spudger. Lift up the metal part of the connector and then pull the connector off of its port
- Once disconnected pull away from its connector carefully with tweezers.
- Once the connectors have been disconnected you can gently lift up on the motherboard to remove it from the device.

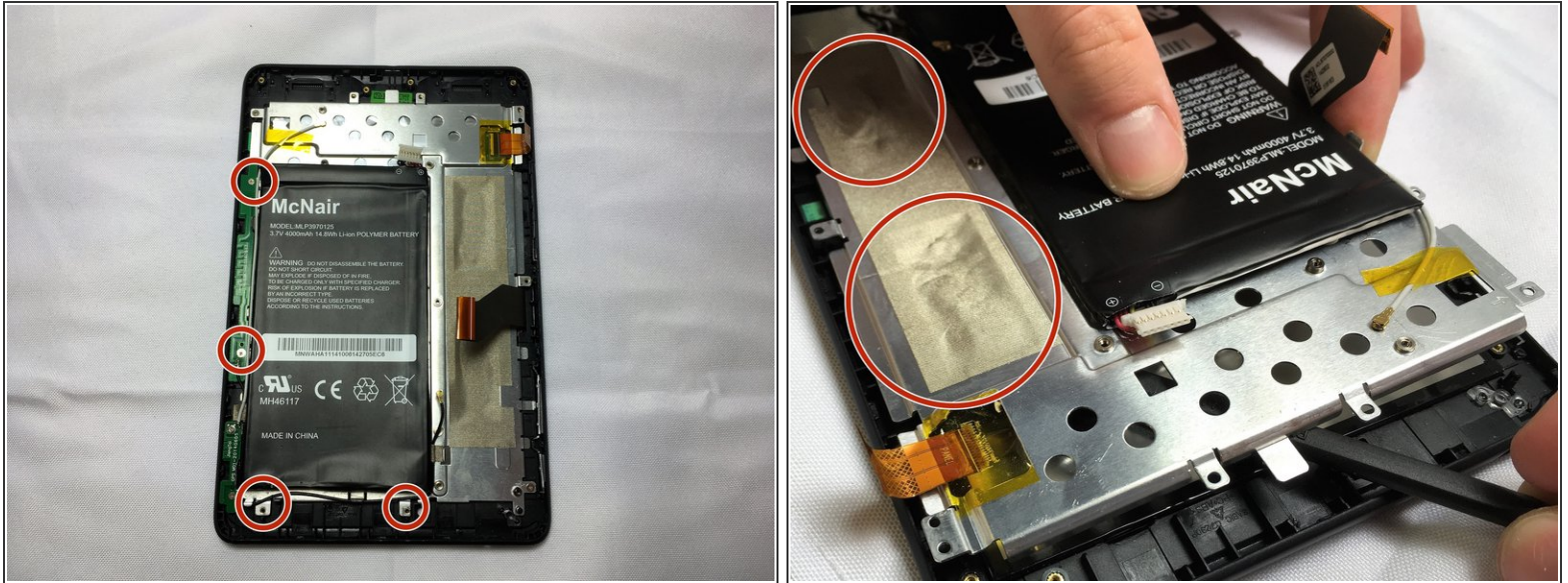
## Step 11



- Remove the motherboard from the tablet.
  - ⓘ Use the spudger to disconnect the press lift connector.



## Step 12



- After you remove the motherboard, remove the other two boards by unscrewing the 4 screws with a Phillips #00 screwdriver.
  - ⓘ The screws shown in the picture are the more common 4.76 mm.
- Remove the tape section of the sheet metal plate with the flat end of a spudger.
  - ⚠ This might cause damage to your device. Be very careful when scrapping the plate off of the device.

## Step 13



- Remove the metal plate from the screen.

To reassemble your device, follow these instructions in reverse order.