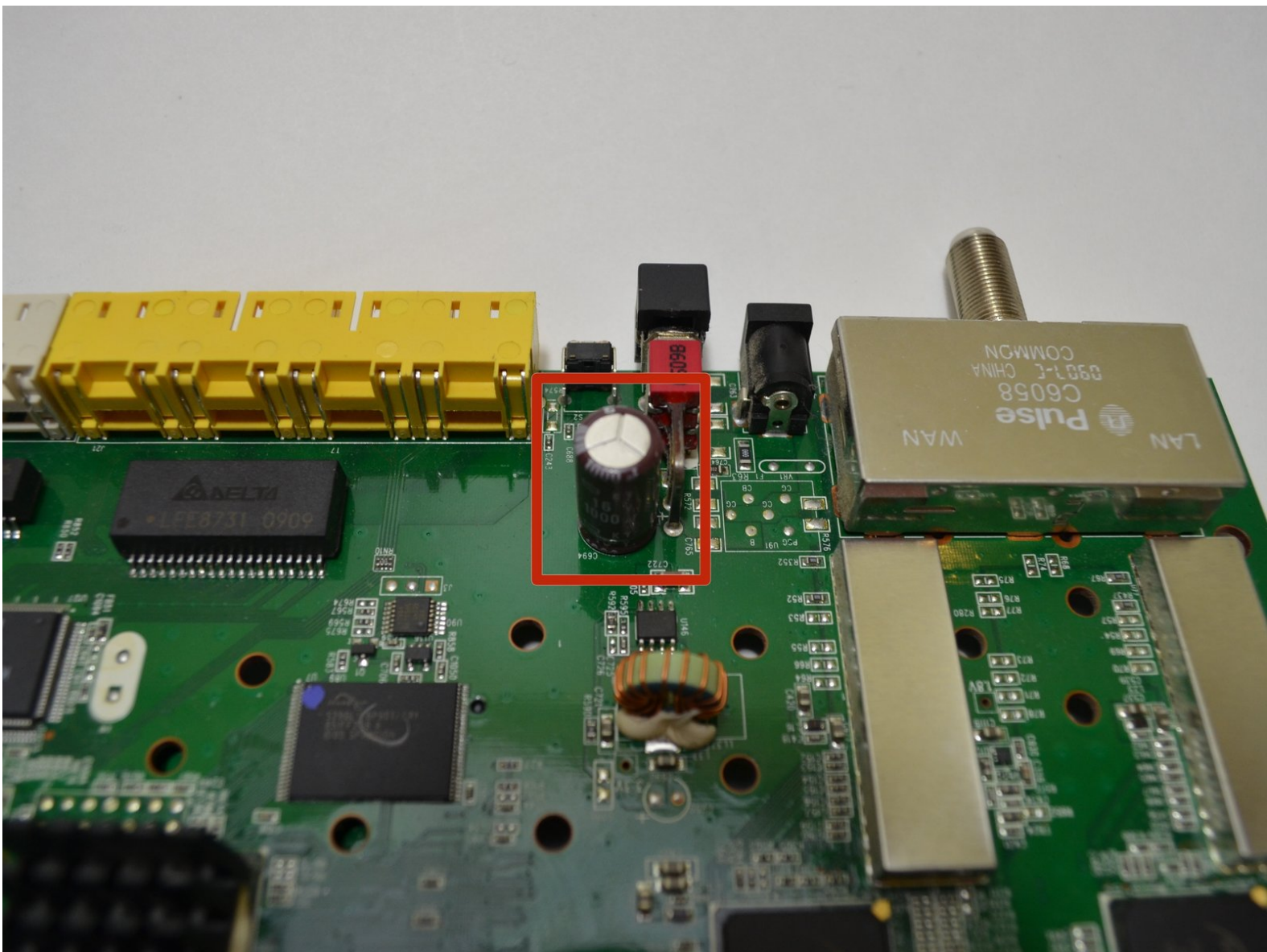




Verizon M1424WR Capacitor Replacement

This guide will illustrate how to locate and replace the capacitor on the Verizon M1424WR circuit board.

Written By: Jeffrey Fox



INTRODUCTION

The capacitor is located on the circuit board. You will need to solder in order to replace the capacitor. For help with soldering techniques, click [here](#).

TOOLS:

- [Phillips #0 Screwdriver](#) (1)
 - [iFixit Opening Tools](#) (1)
 - [Soldering Iron](#) (1)
 - [Solder](#) (1)
-

Step 1 — Motherboard



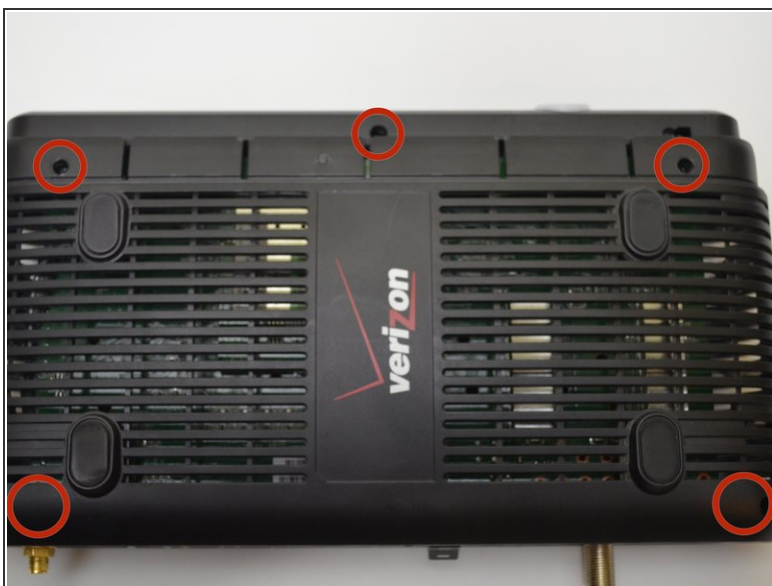
- Flip the device so that the bottom is facing up.

Step 2



- Insert the plastic-opening tool under the silver labeled casing.
- Carefully pry at different intervals around the silver labeled casing to separate the silver casing from the top and bottom casing.

Step 3



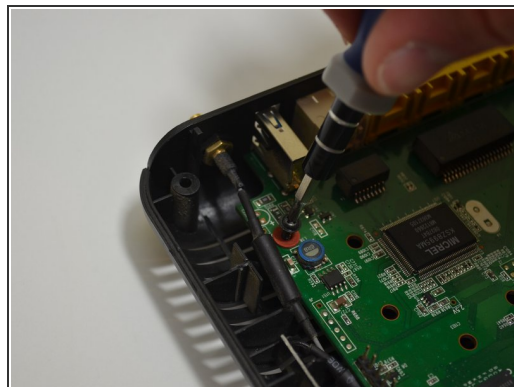
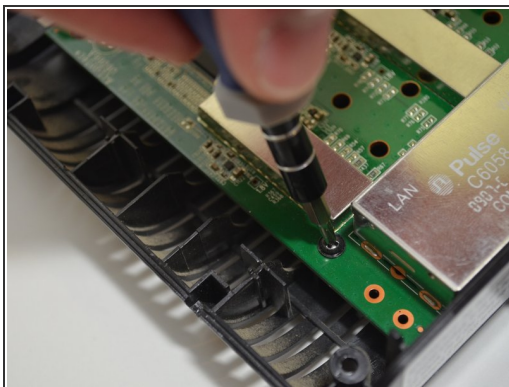
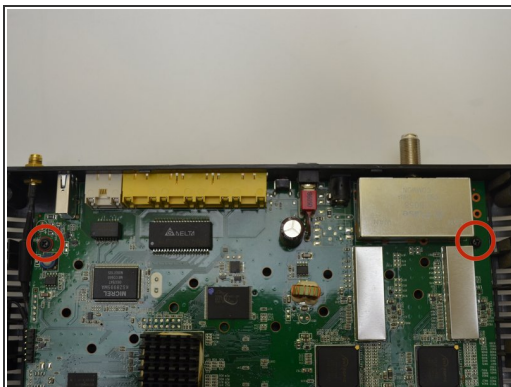
- Unscrew the five 10-mm screws on the bottom of the router using a Phillips #0 screwdriver.

Step 4



- Use a plastic-opening tool and pry the top casing from the bottom casing to expose the circuit board in the bottom half of the device.

Step 5



- Locate the two 10-mm screws on either side of the circuit board.
- Unscrew the two 10-mm screws using a Phillips #0 screwdriver.
- ⓘ Keep track of the red rubber washer you remove from underneath one of the screws.

Step 6



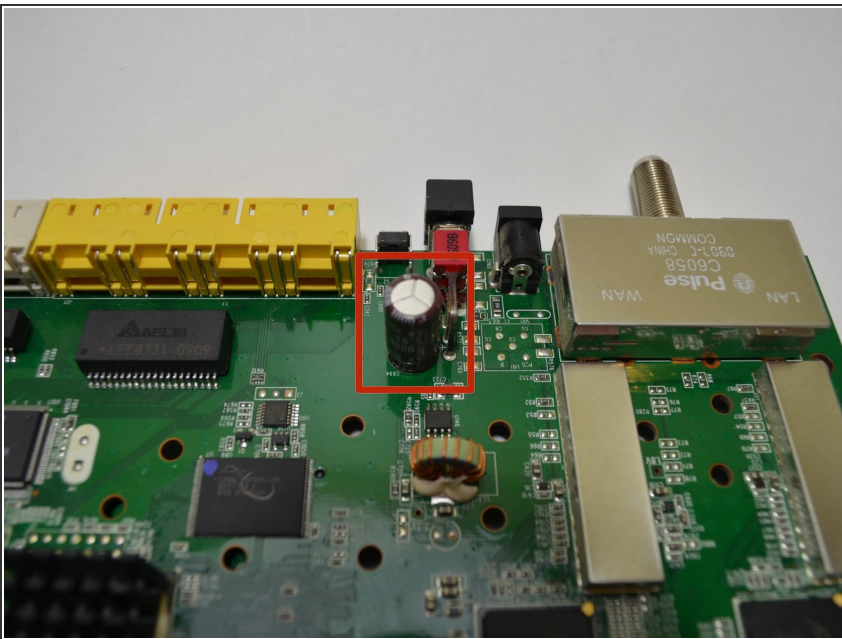
- Lift the front of the circuit board up from the bottom casing.

Step 7



- Pull the circuit board towards you until it is separate from the bottom casing.

Step 8 — Capacitor



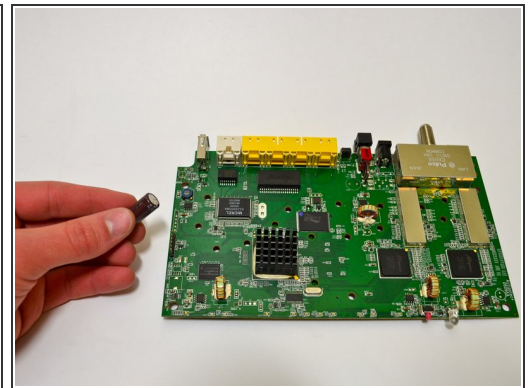
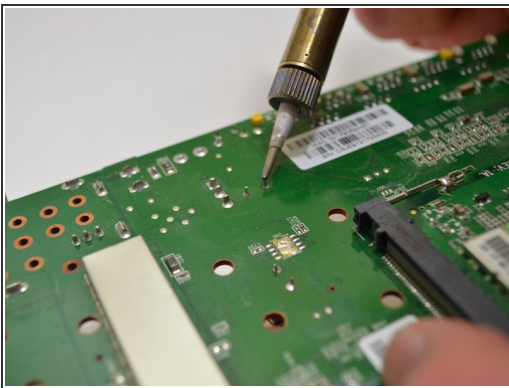
- Locate the capacitor.


Step 9



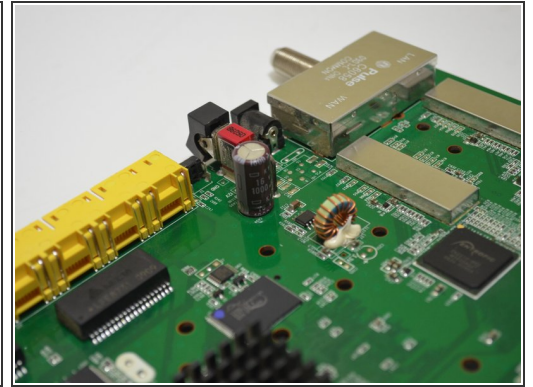
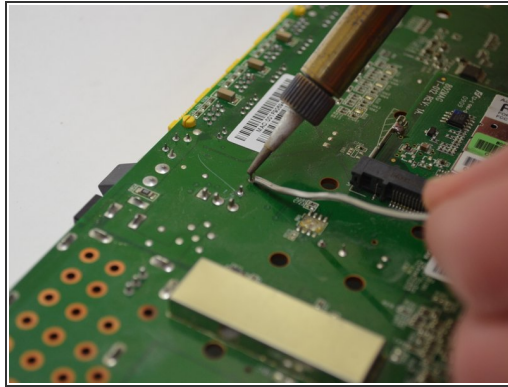
- Flip the circuit board over.
- Locate the two prongs on the flip side that are attached to the capacitor on the top side.

Step 10



- Touch the hot soldering iron to each prong in order to melt the solder around them.
 - Flip the circuit board and pull out the capacitor from its place while the solder is still hot.
-  For help with soldering techniques, click [here](#).

Step 11 — Reassembly



- Insert the new capacitor through the circuit board so that the prongs are exposed on the flip side.
- Heat the prongs up with the soldering iron and touch a soldering wire to the hot prongs to attach the capacitor to the board.

To reassemble your device, follow Steps 1-7 in reverse order.