



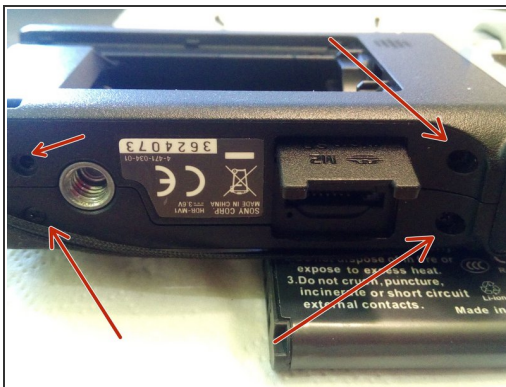
Video Camera Sony MV1 Disassembly

How to fix faulty focus on Sony MV1. I broke mine after it dropped on the ground, here is how I've fixed it.

Written By: Cafony

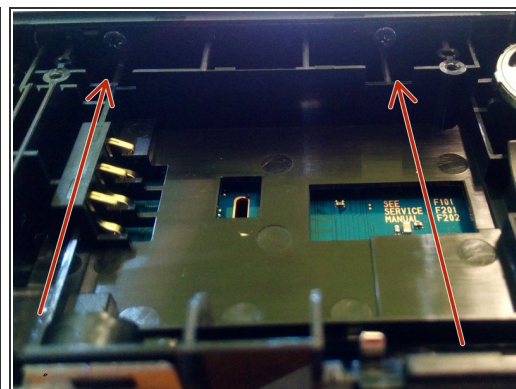
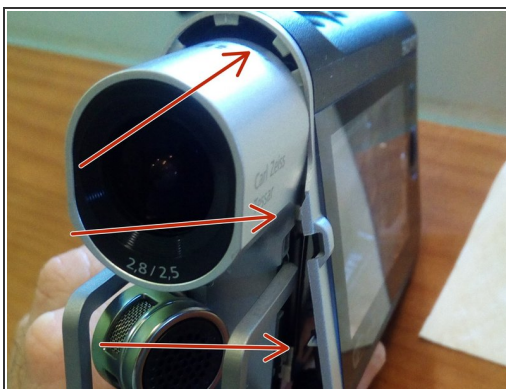
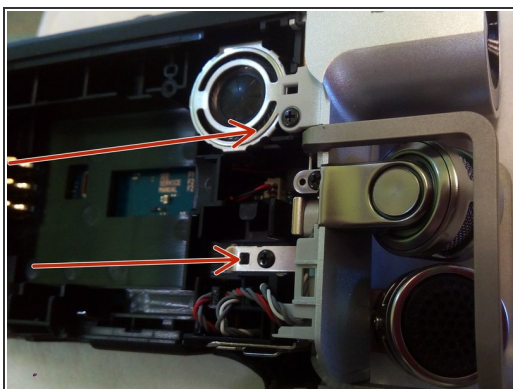


Step 1 — Remove back cover



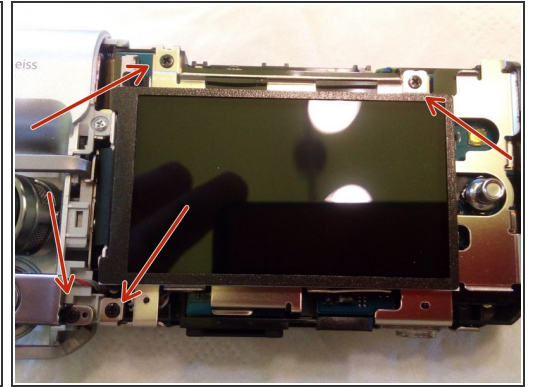
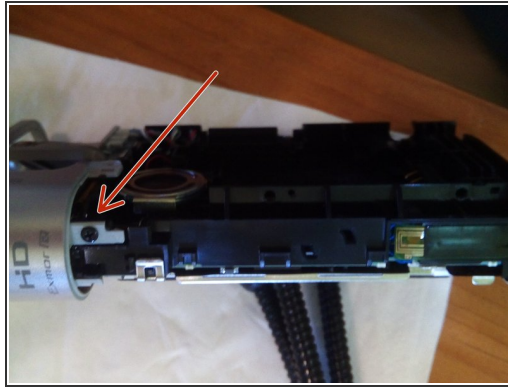
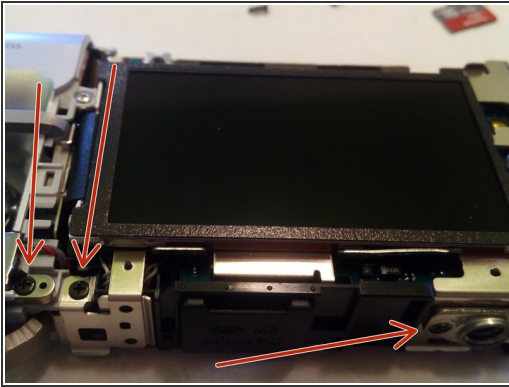
- Insert instructions here

Step 2 — Remove Screen Cover



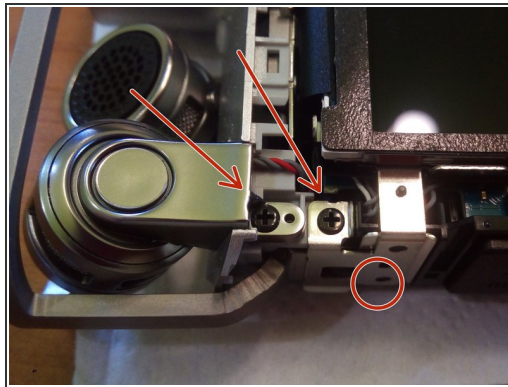
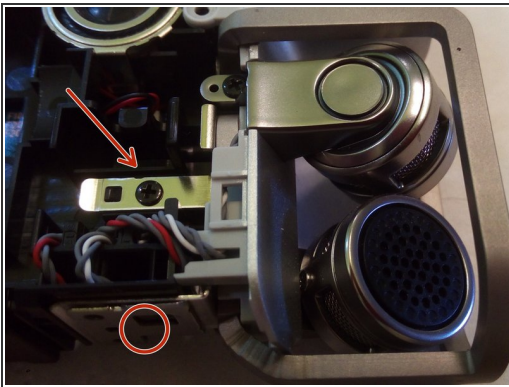
- Insert instructions here

Step 3 — Remove metal screen support



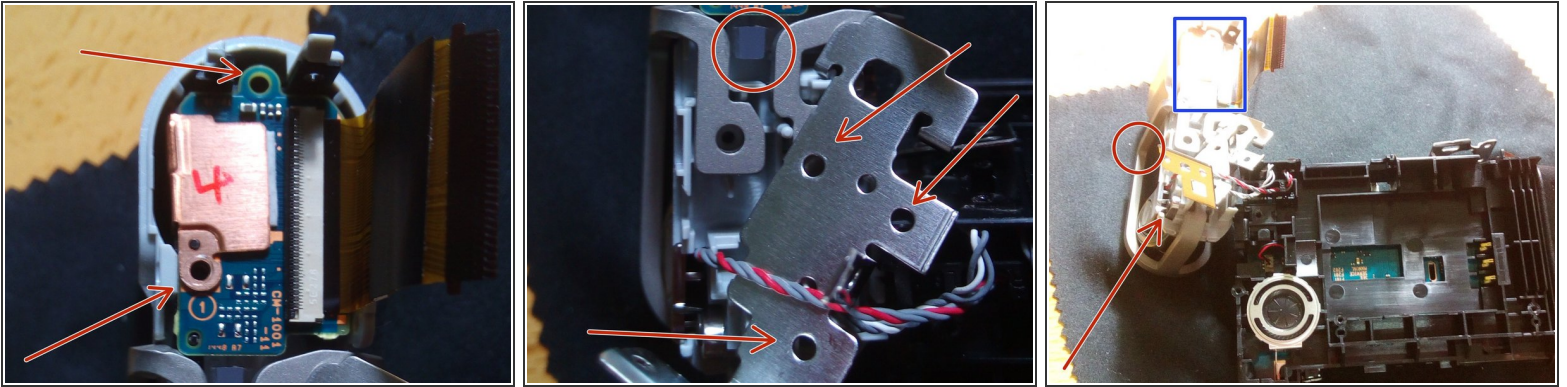
- Insert instructions here

Step 4 — Remove Mic/Lens support



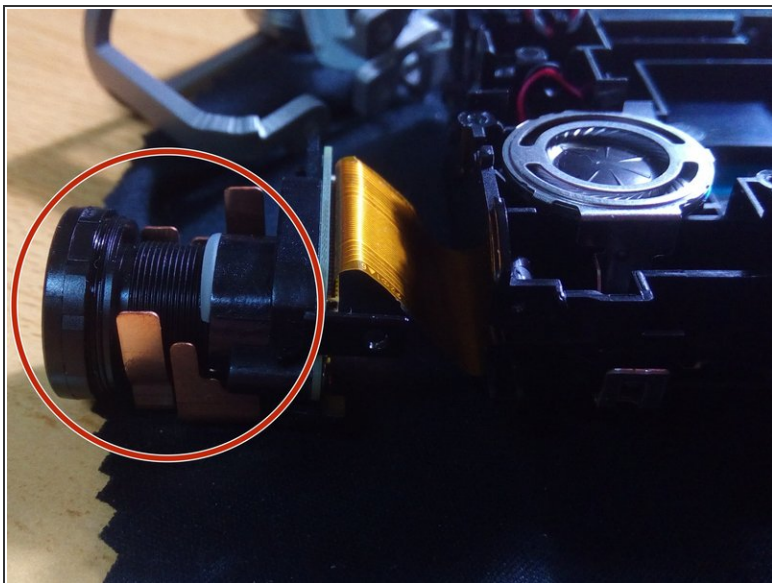
- Insert instructions here

Step 5 — Remove Lense



- 1 - Remove 2 screws on lense board.
- 2 - On second photo "cant see" the screws but remove 3, then gently in the circle remove recording plastic light.
- 3 - Remove screw from Microphone so you can remove metal protection to get out lens board.

Step 6 — Focus Lense manually



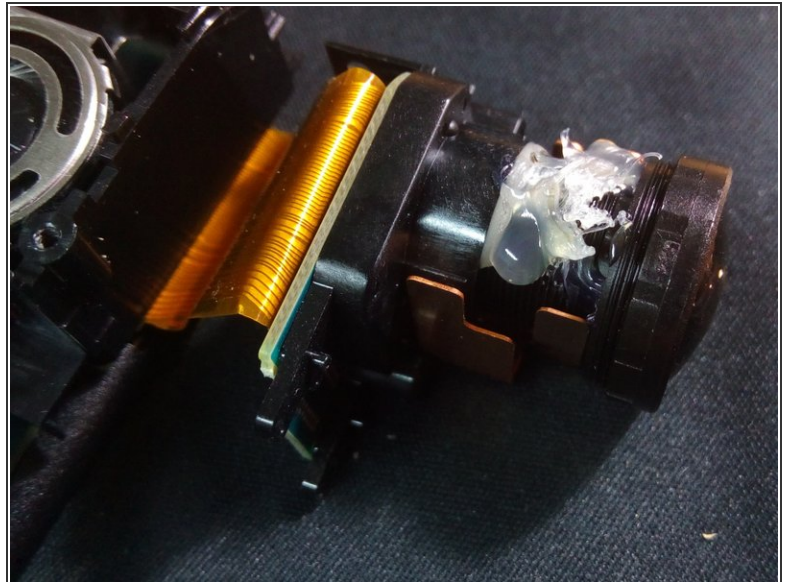
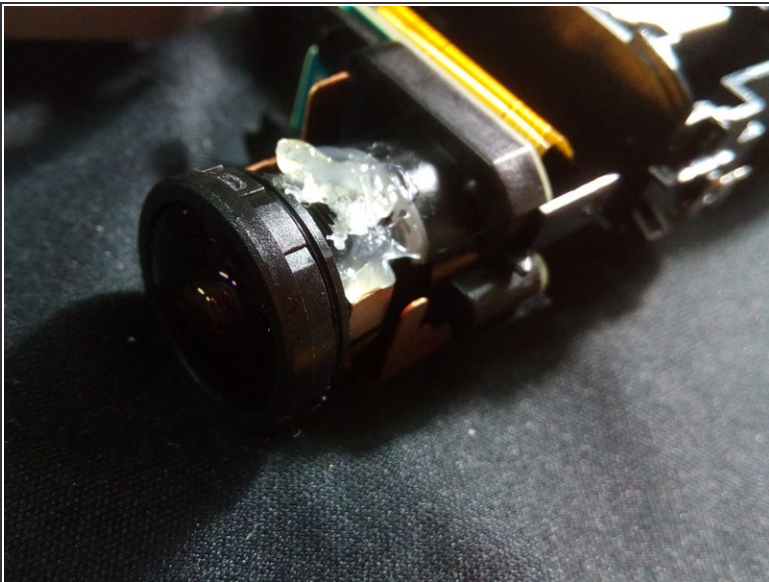
- 1 - The lense can be rotated manually untyl you get it on focus.
- 2 - With camera open insert batery, hold it by hand to make contact.
- 3 - Click power buton and start the camera.
- 4 - Look at screen and with other hand focus the lense.

Step 7 — Add battery and focus manually



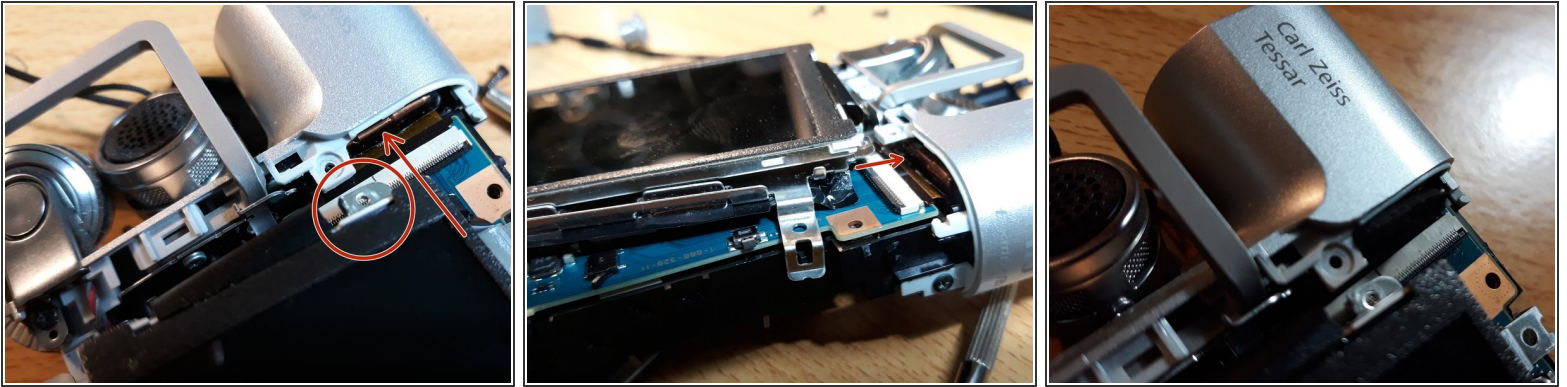
- Insert battery, hold power button. Check screen and focus lens manually. Enjoy !

Step 8 — Sony MV1 Hot glue the lens



- After you tune the "lens" you should get some hot glue on the lens, cause with time it will get out of place. I have to open my camera two times for this reason.

Step 9 — Sony MV-1 "Black Screen"



- With time the lens move back from original position.
- It start to make contact with the little metal base where the screw goes.
- With a metal file I remove some of the metal base of screw.
- Before assembly the camera put the battery in and try it!.
- Check if the screen works.

To reassemble your device, follow these instructions in reverse order.