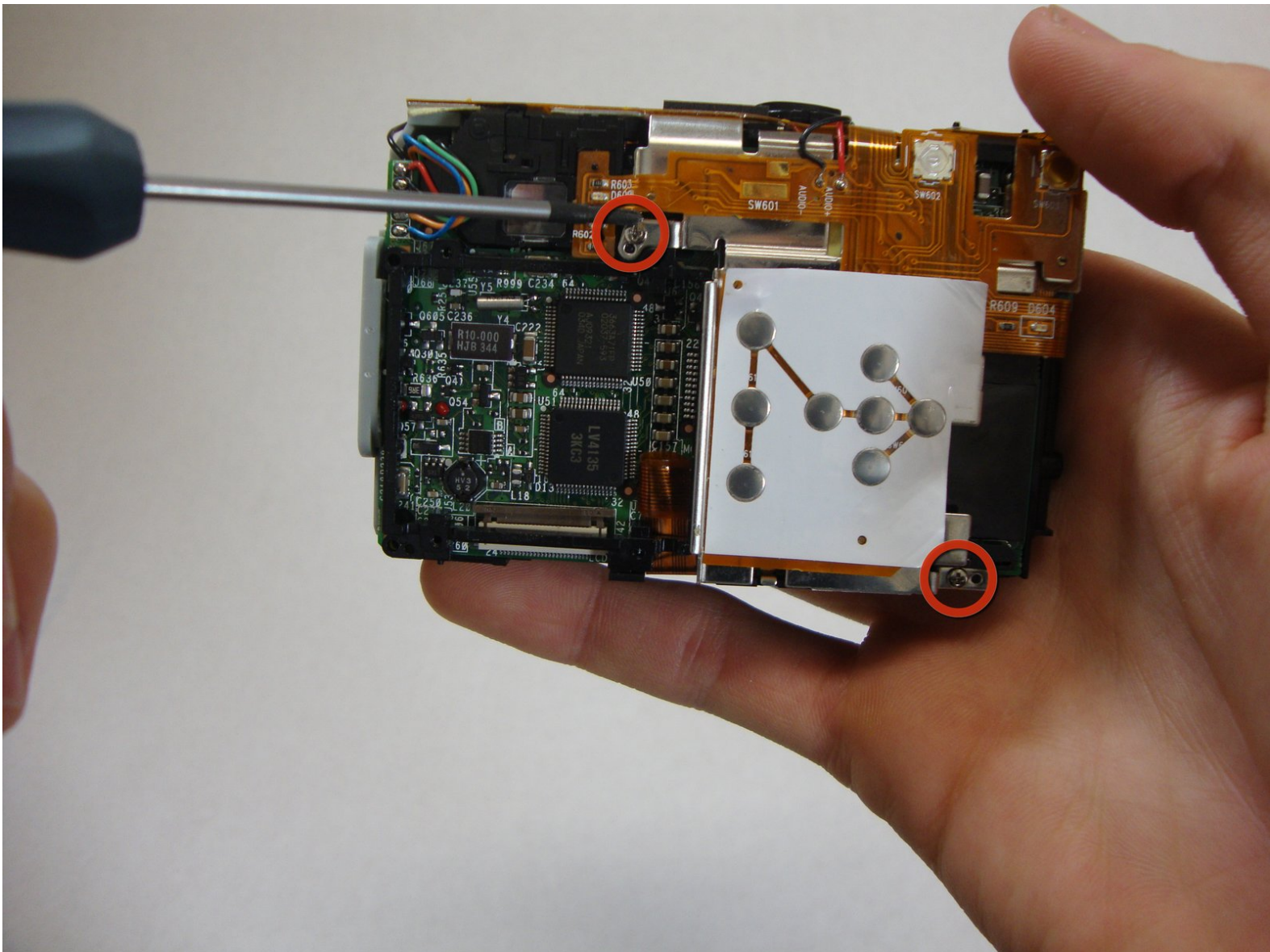




Viewfinder Mirror and Lens

This guide will show you how to install the viewfinder mirror and lens of the camera

Written By: Nick Oleskowicz



INTRODUCTION

This guide is meant to teach the reader to install a new viewfinder mirror and lens. If the lens or mirror are no longer working or broken, this guide will help the reader replace them with new ones.



TOOLS:

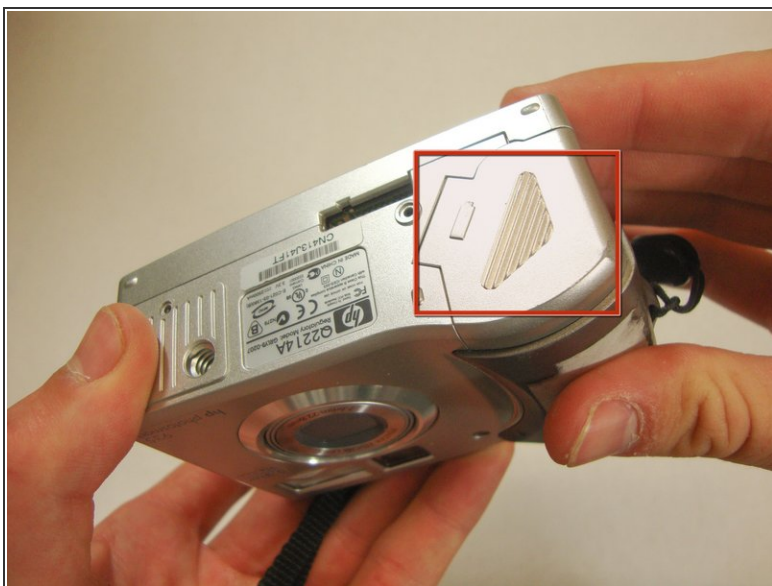
- [Tweezers](#) (1)
 - [Phillips #00 Screwdriver](#) (1)
-

Step 1 — Batteries



- Flip the camera over so the bottom is facing you.

Step 2



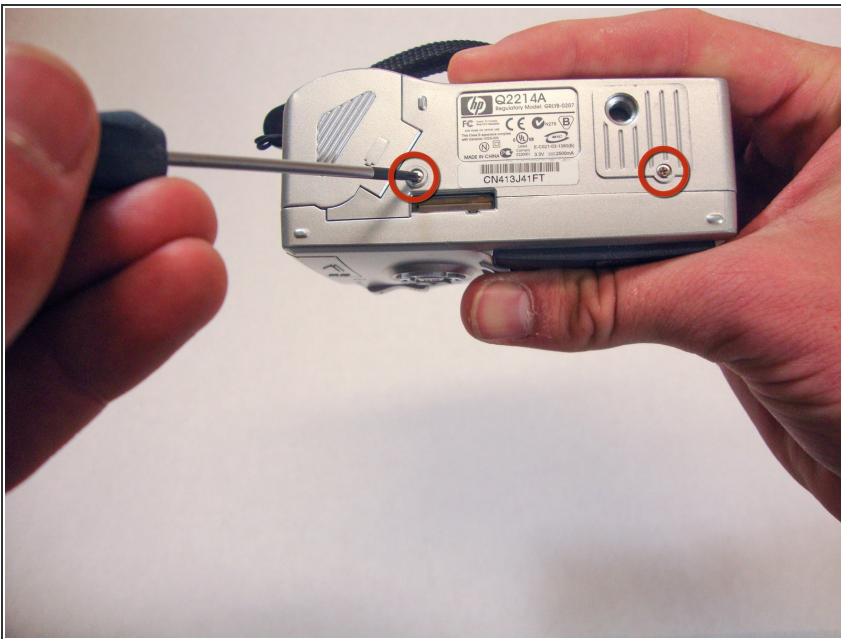
- Open the cover on the bottom by sliding it in the direction of the arrow.

Step 3



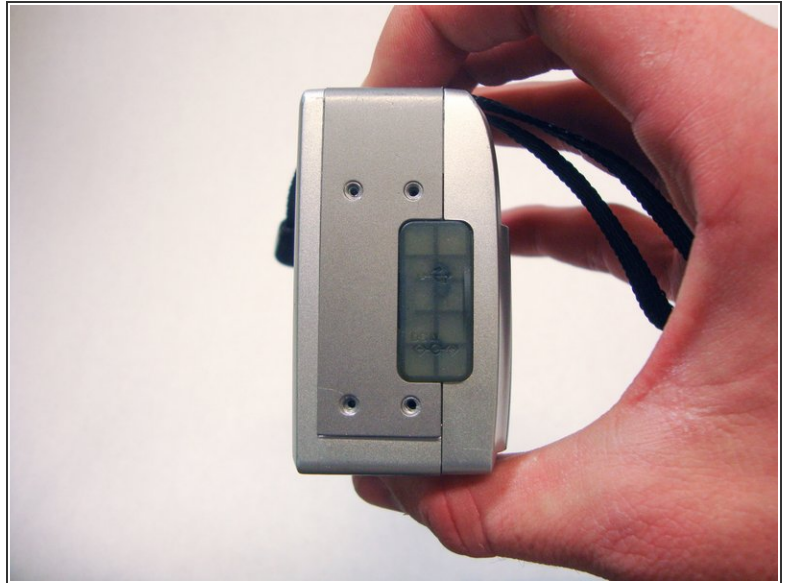
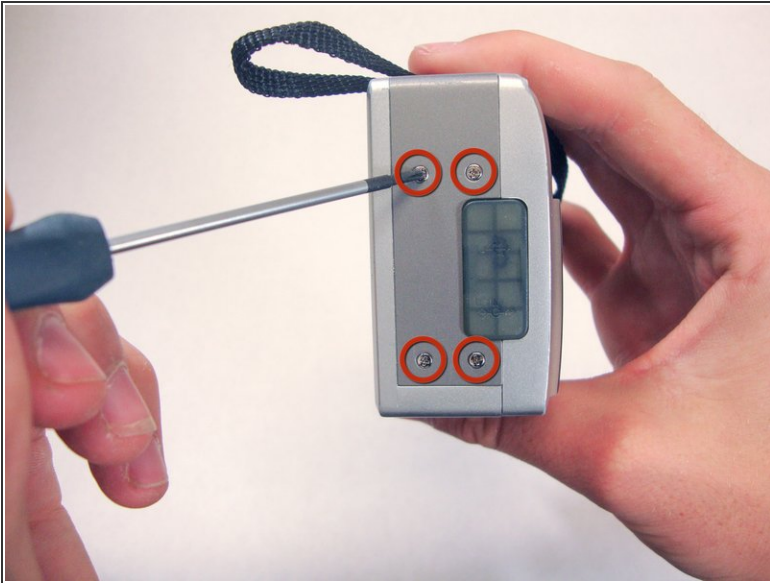
- Remove the batteries by pulling up on the top with your fingers.

Step 4 — Plastic Casing



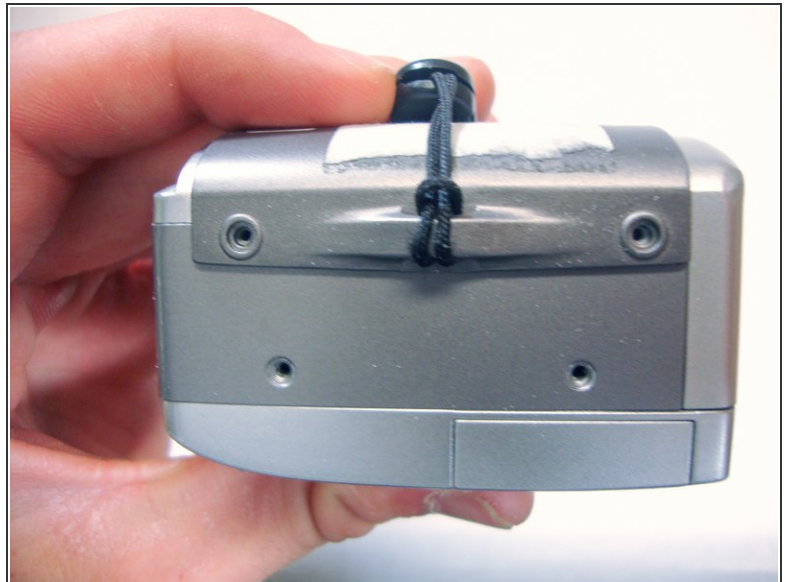
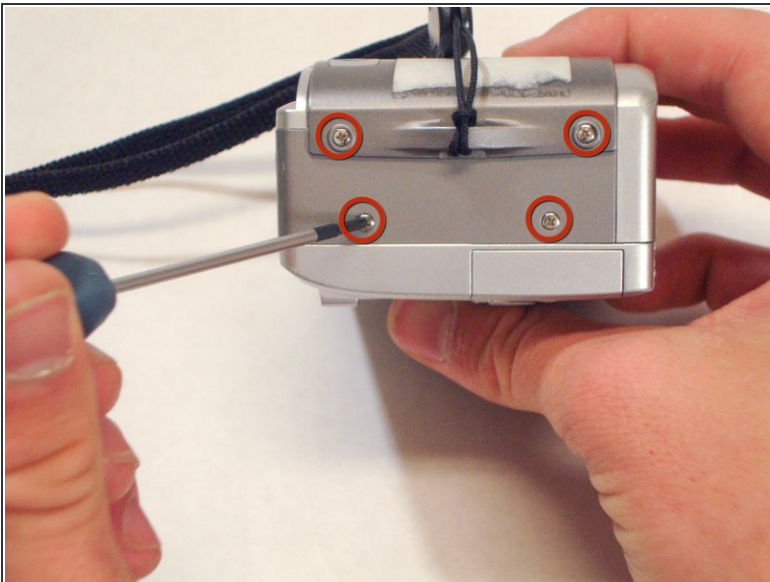
- Unless otherwise stated, use a phillips #00 screwdriver to remove screws.
- Remove the two 4.70mm screws in the bottom of the plastic casing.

Step 5



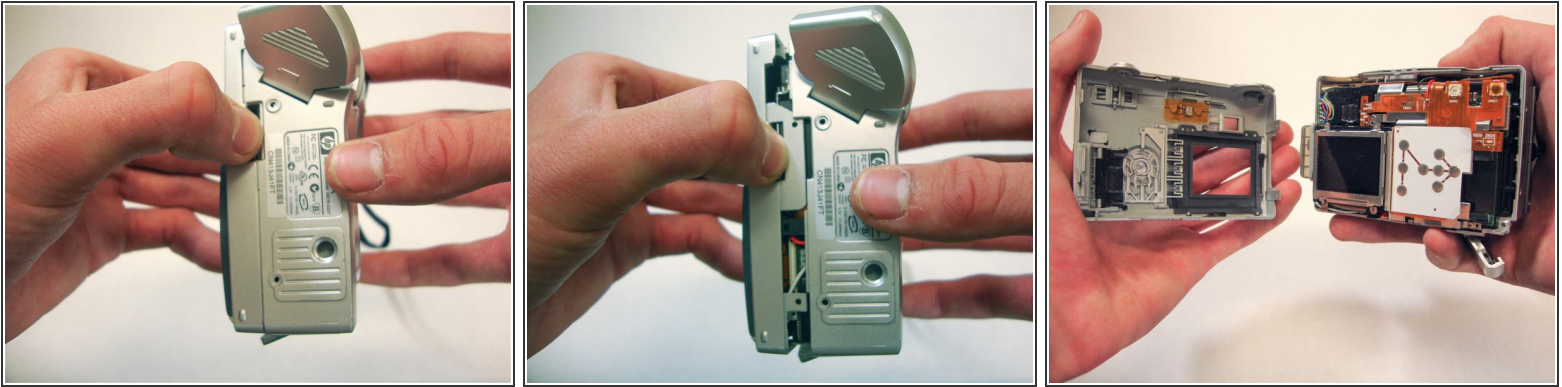
- Remove the four 4.70mm screws in the left side of the camera.

Step 6



- Now on the side with the strap, remove the other four 4.70mm screws.

Step 7

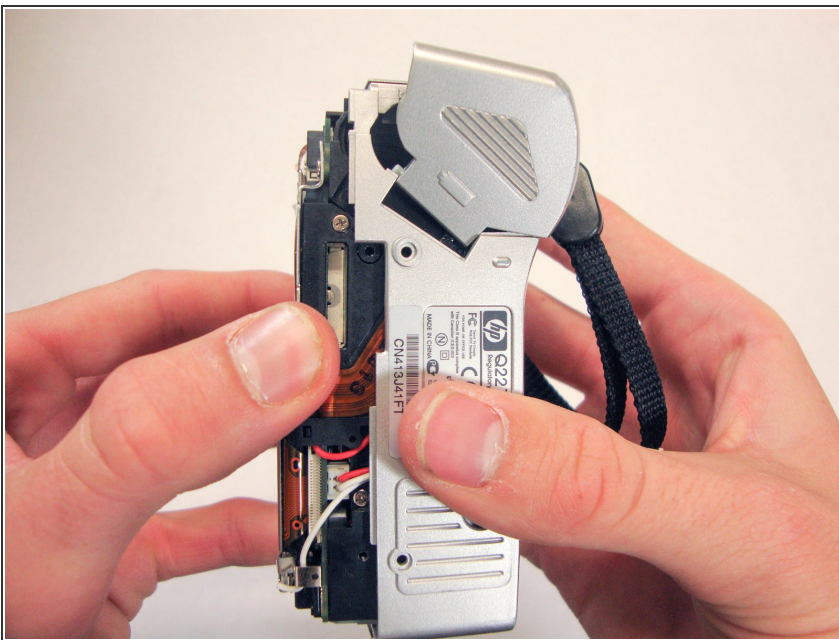


- Use your thumbs to pry the case apart.

i It is easiest to pry to case apart if your start at the bottom.

i The case should come apart with minimal effort. If it doesn't, you can use a tool such as a Spudger or Plastic Opening tool.

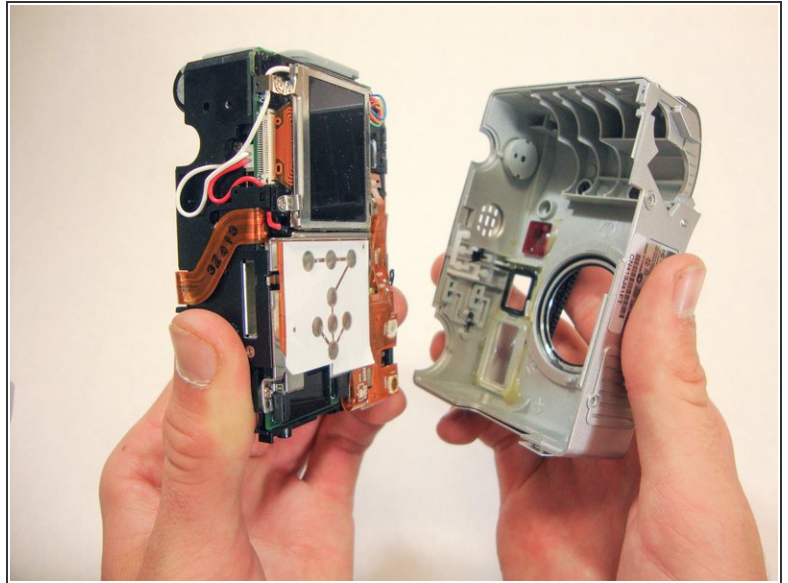
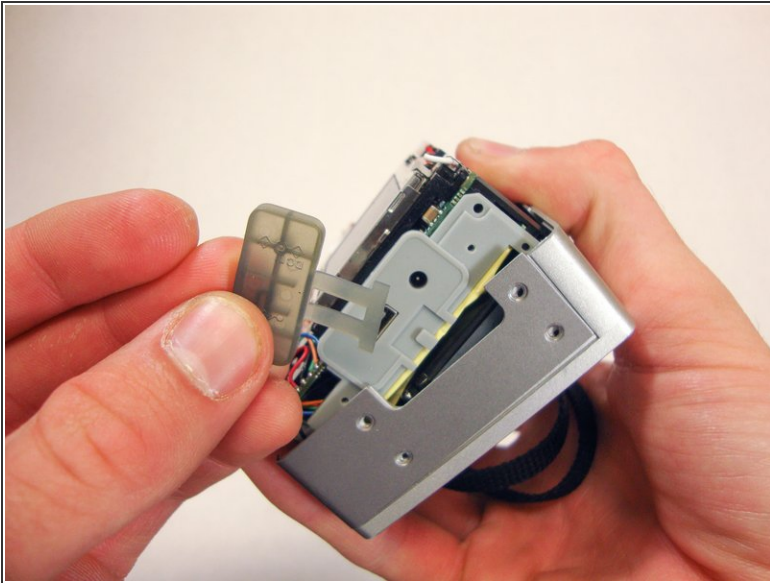
Step 8





⚠ This step requires a significant amount of force.

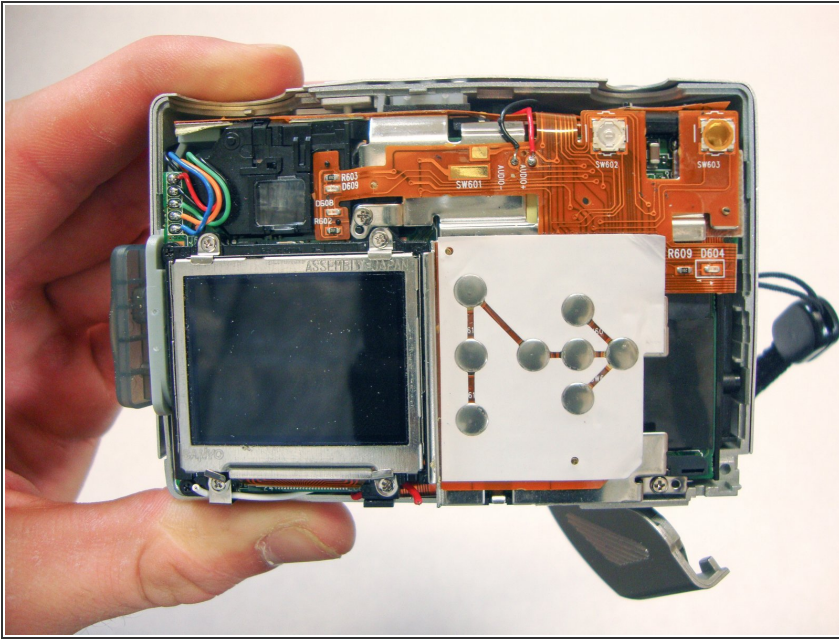
- Pull the bottom half of the inner camera out of case about half an inch. This may be difficult and force is necessary.

Step 9



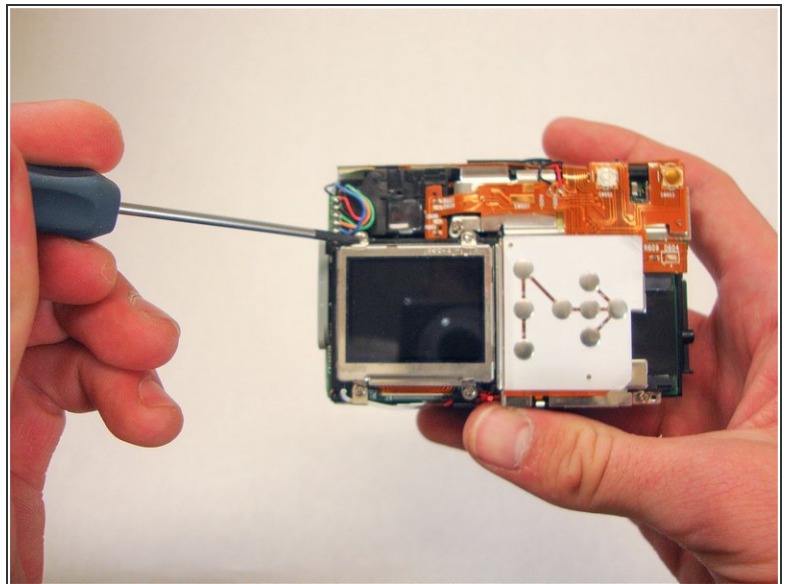
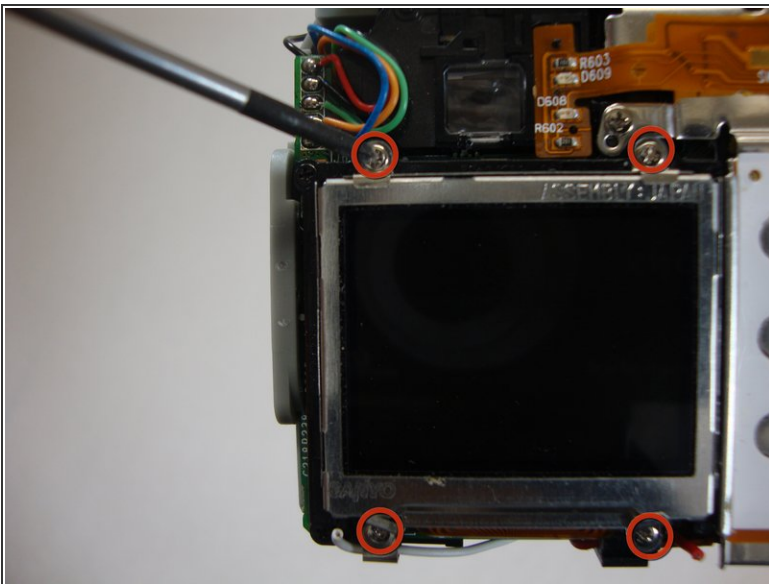
-  While pulling the camera out of the case, note the small soft plastic cover on the side of the camera. This cover will detach from the rest of the device.
- Once the bottom of the inner camera is pulled out about an inch and a half, pull the device out completely.
-  When completely removing the device from the case, use a firm grasp with your hands for stability and control.

Step 10 — LCD Screen



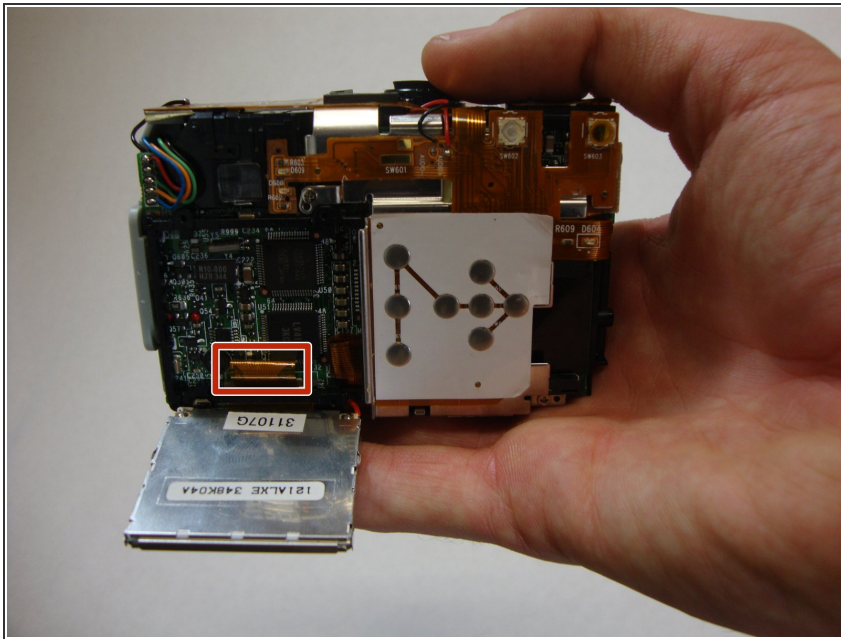
- Turn the camera so that the LCD screen is facing you.
- ★ If case is still on, remove it by following the Plastic Casing Installation Guide found in the previous steps.
- ⓘ You will not be able to complete this guide without removing the casing completely.

Step 11



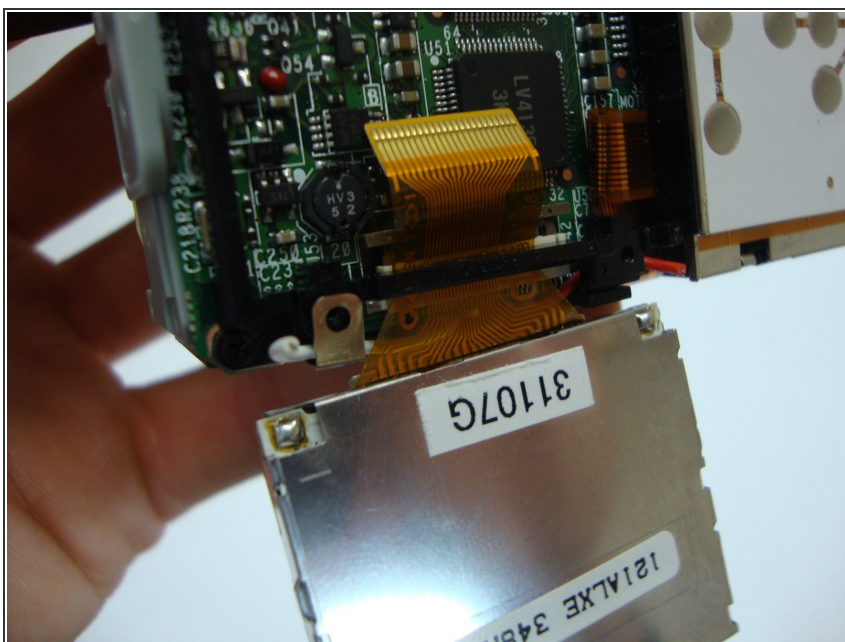
- Remove the four 4.40mm screws that hold the LCD screen in place to the frame.

Step 12



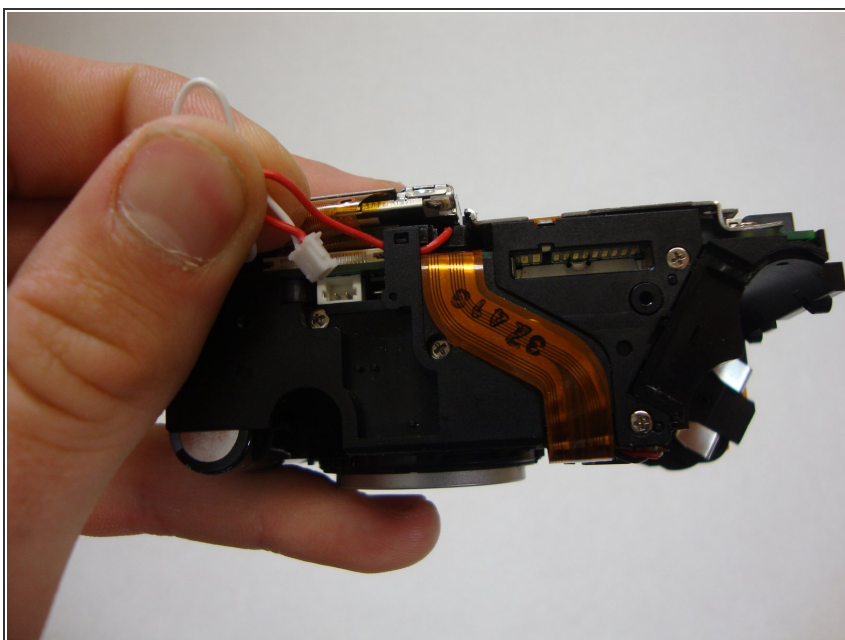
- Allow the LCD screen to flip down. This will expose the electric strip connecting the screen to the camera.

Step 13



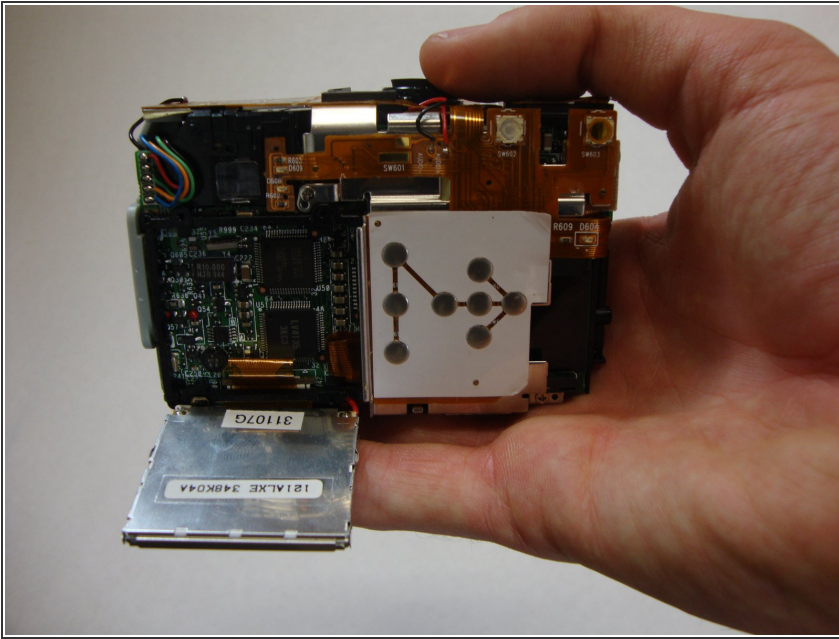
- ① Look for where the yellow electric strip is attached to the camera. There is a plastic grey bar and a white base holding this strip in place.
- Push the grey bar away from the white base. This will release the yellow electric strip and free the LCD screen from the camera.

Step 14



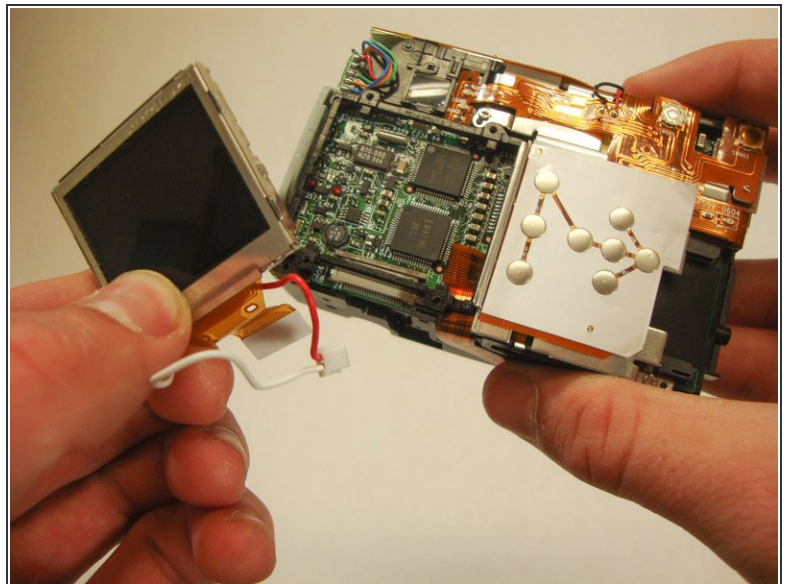
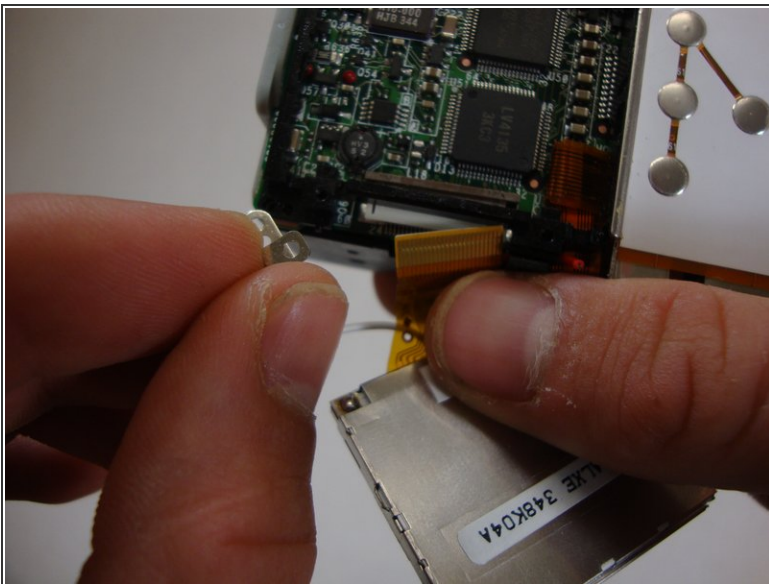
- Unplug the connected red and white wires. They will come out with the small white casing.

Step 15



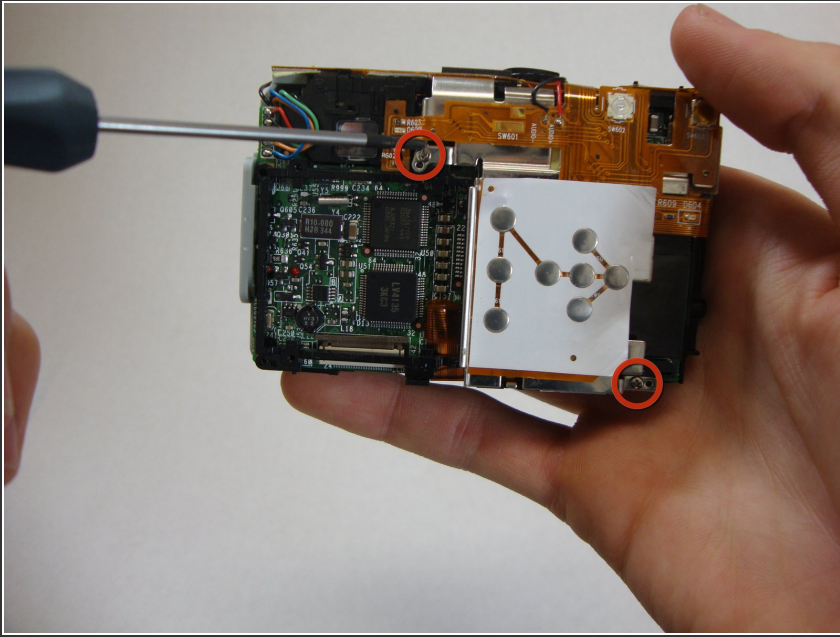
- Flip camera so that the lens is facing away from you. You should be looking at the LCD screen.

Step 16



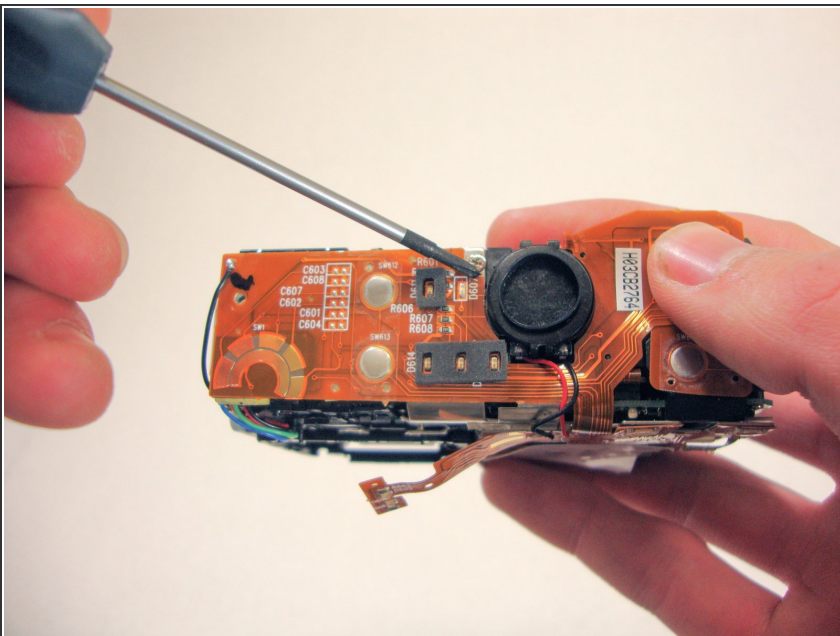
- Remove bottom left LCD mounting frame screw.
- Remove LCD screen from camera. Screen should come loose after screw is removed. Make sure electric strip comes out with screen.

Step 17 — Viewfinder Mirror and Lens



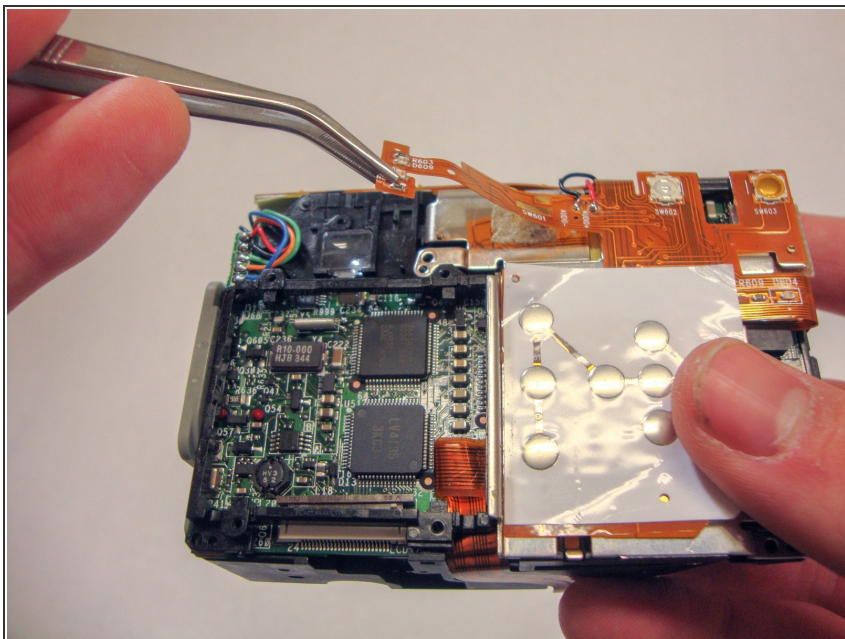
- Remove the two screws securing the electric strip casing on the back of the camera.

Step 18



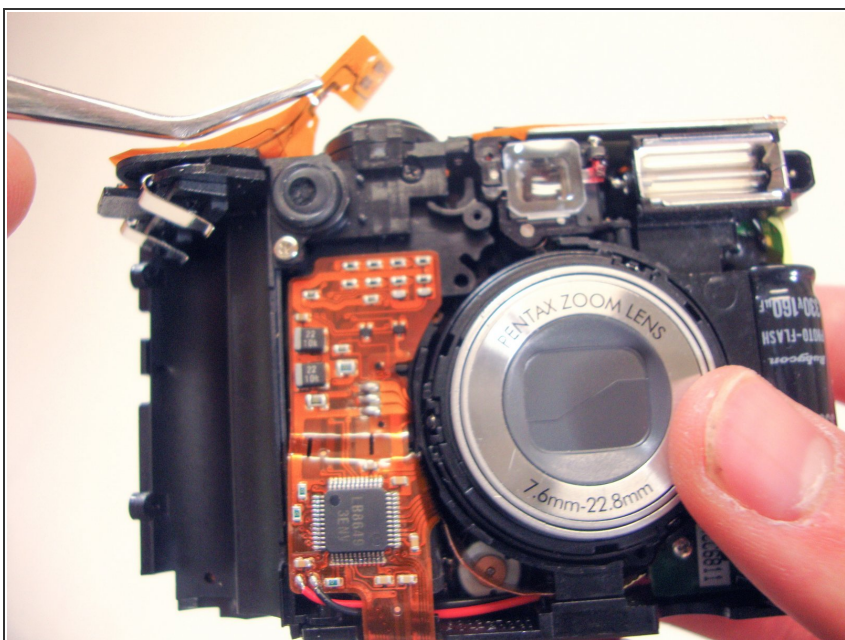
- Flip the camera over so that the top is facing you. This is the side with the main button.
- Remove screws securing the electric strip casing near the speaker

Step 19



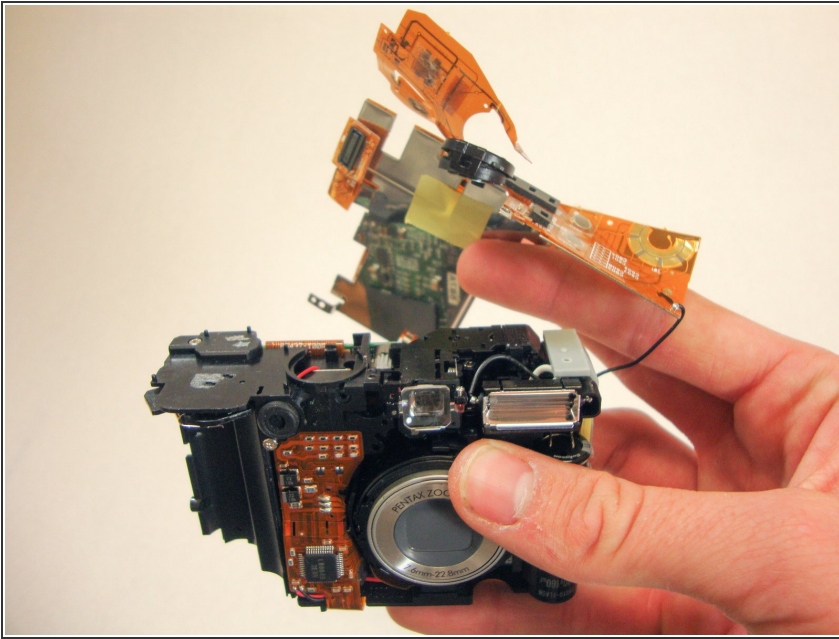
- Flip the camera over so that the back is facing you. This is the side where the LCD screen used to be.
- Pull the end of the electric strip off of the back of the camera with tweezers.

Step 20




- Pull the electric strip off of the top of the camera with tweezers.
- By now, you should have two ends of the electric strip detached from the camera.

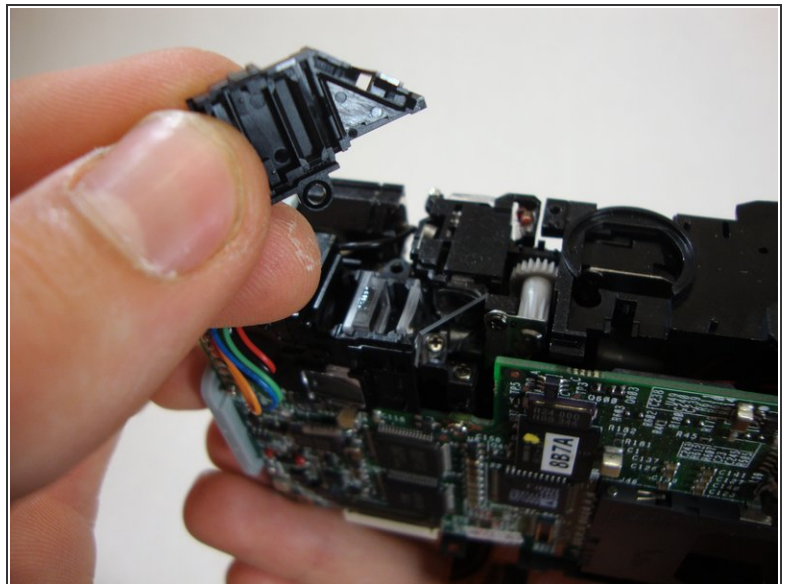
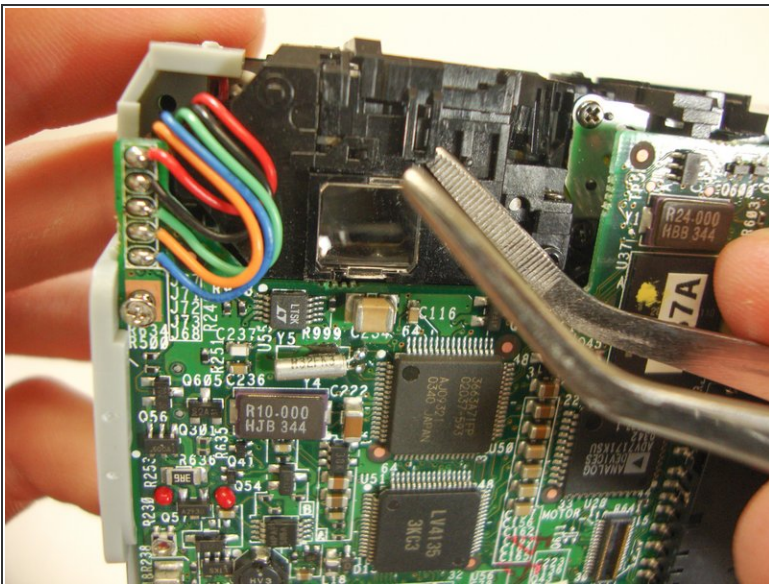
Step 21



- Using your fingers, fully detach the strip along with the casing. This should come off easily. Be careful not to rip or tear any of the electric strip.

 The black wire should not be broken or removed. This will damage the camera.

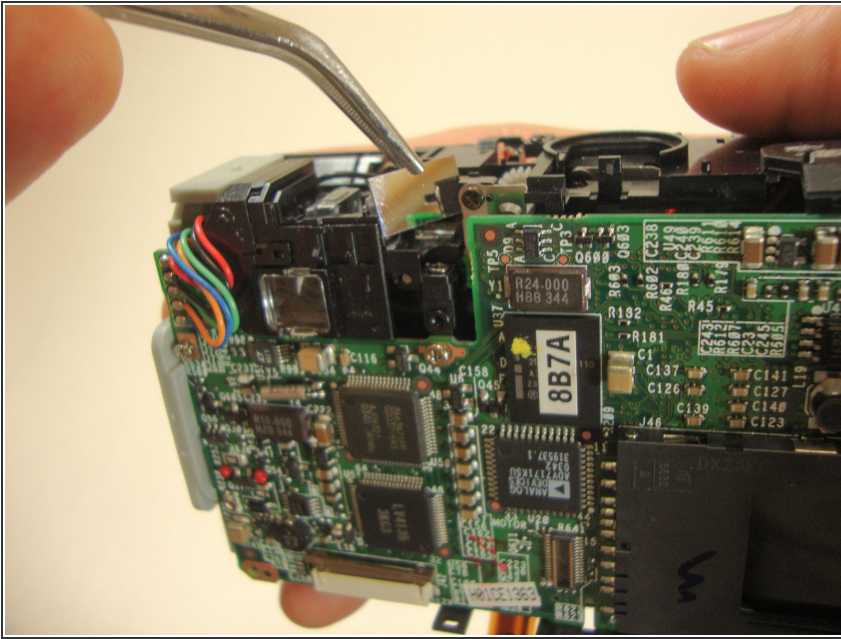
Step 22



- Orient the camera so that you are looking at the back of the camera. This is right above where the LCD screen used to be.
- Detach the clip of the viewfinder cover with the tweezers.
- Push up and remove the viewfinder cover.

This document was generated on 2019-09-18 11:08:48 PM (MST).

Step 23



- Remove the viewfinder mirror by pulling up on the mirror with tweezers.

To reassemble your device, follow these instructions in reverse order.