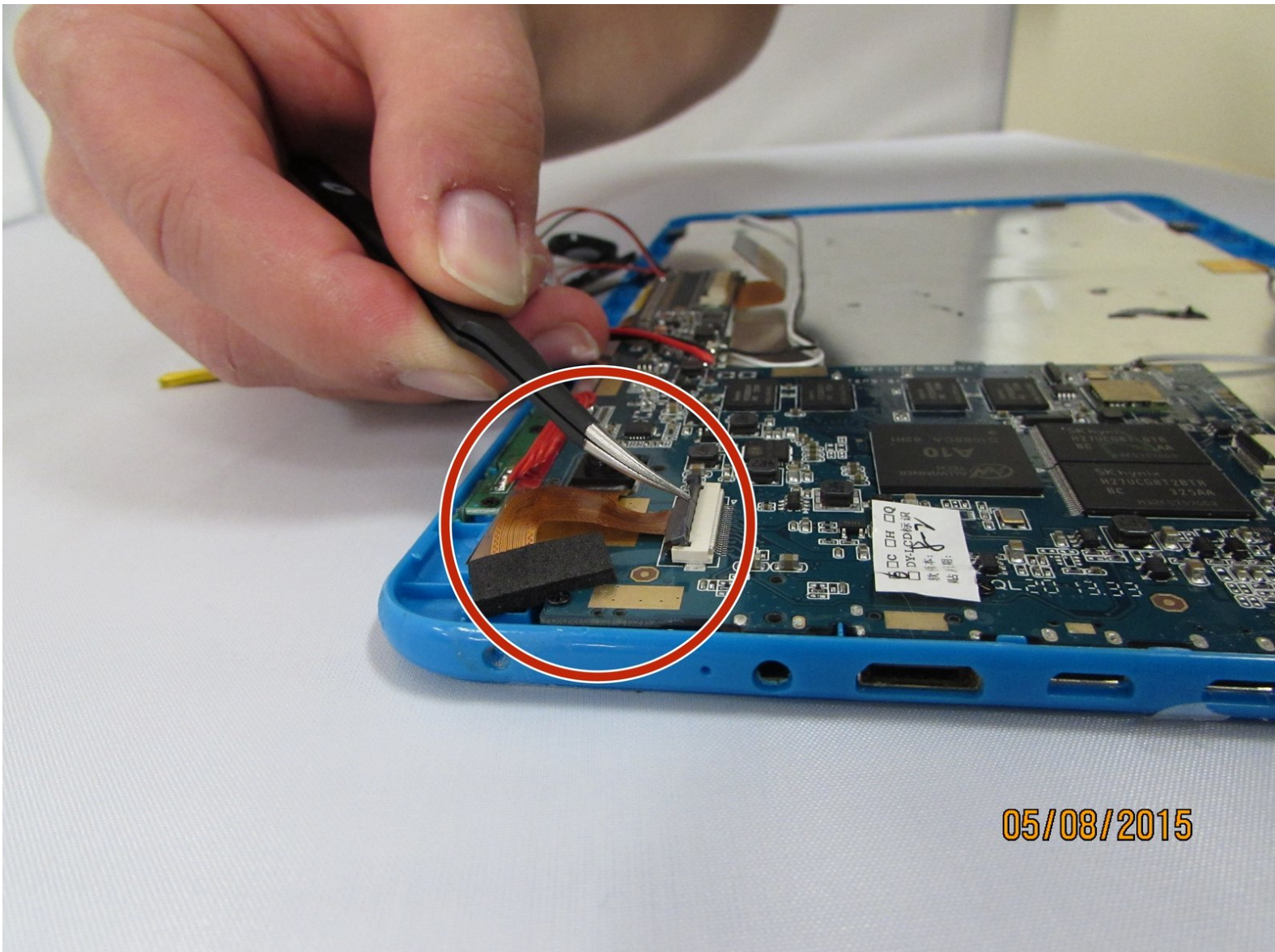




Visual Land Prestige 10 Front Facing Camera Replacement

This guide will teach you how to replace the camera housing in the Visual Land Prestige 10 Tablet

Written By: Connor Reese






TOOLS:

- [Magnetic Project Mat](#) (1)
- [Phillips #00 Screwdriver](#) (1)
- [iFixit Opening Tools](#) (1)
- [Spudger](#) (1)

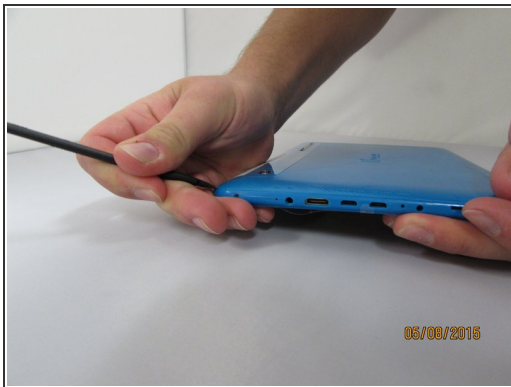
Step 1 — Back Case



- Remove the 3mm screws from bottom of tablet with the precision screwdriver and place on magnetic mat. label where they came from.

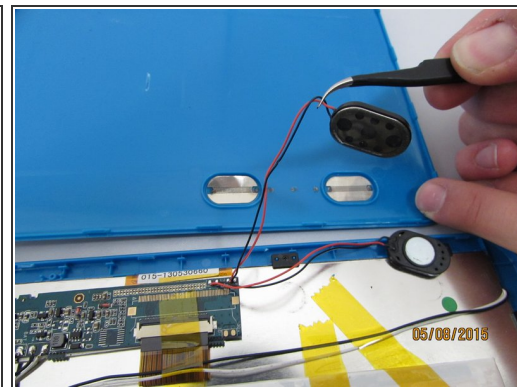
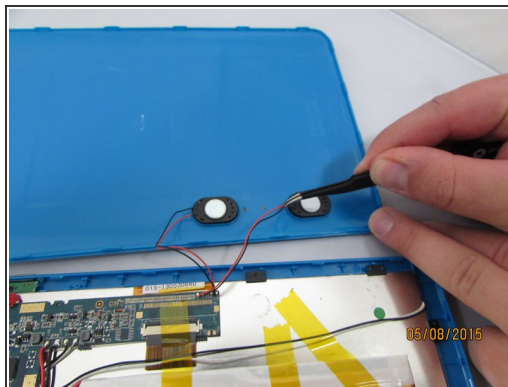
 All screws throughout this guide are the same 3mm size.

Step 2



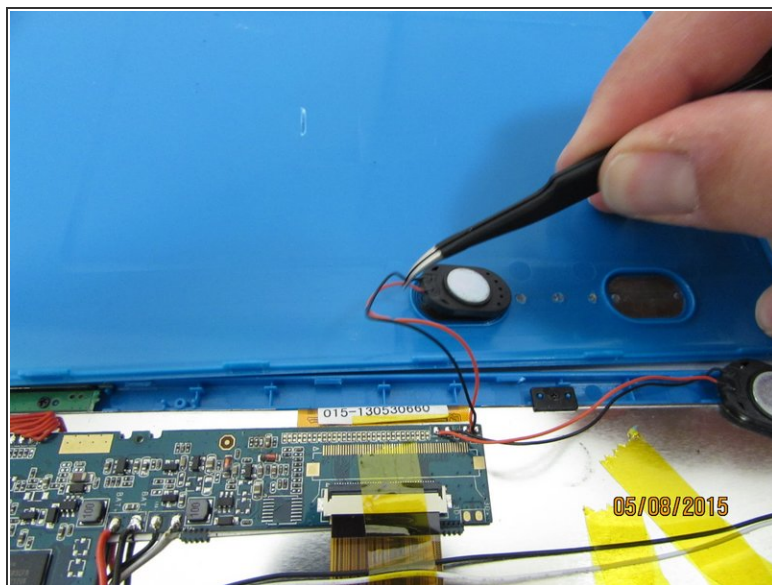
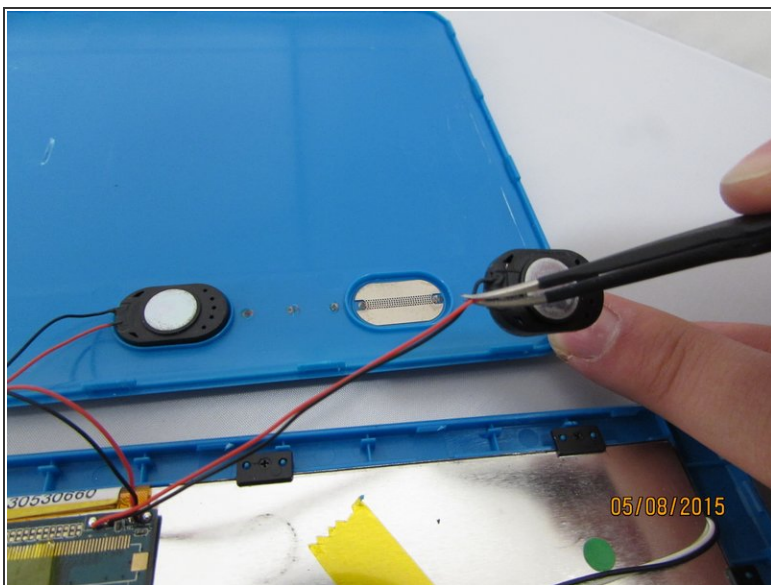
- Using the spudger, create a small opening to be used to open the back case.
- While holding the case open, insert the plastic opening tool to get a larger opening.
- Once you have a slight opening, insert the spudger and work around the edges, separating the back plate from the front.

Step 3



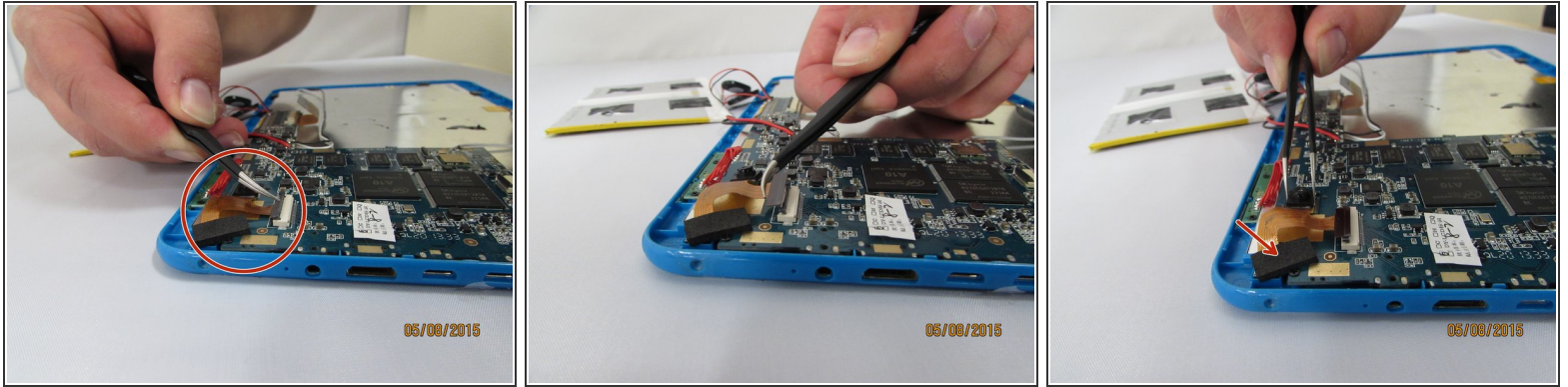
- now that the case is open, carefully remove the speakers and set aside.

Step 4



- Gently remove the speakers from the back case with tweezers and set the case aside.

Step 5 — Front Facing Camera



- Locate the Camera Housing. Gently grip and lift the small black tab until you feel an audible click.
- Gently remove the connector by pulling straight out, gripping the black connector head or as close as possible.
- Gently grip and pull up the front camera, covered by protective adhesive foam.
- Set aside the Camera housing.

To reassemble your device, follow these instructions in reverse order.