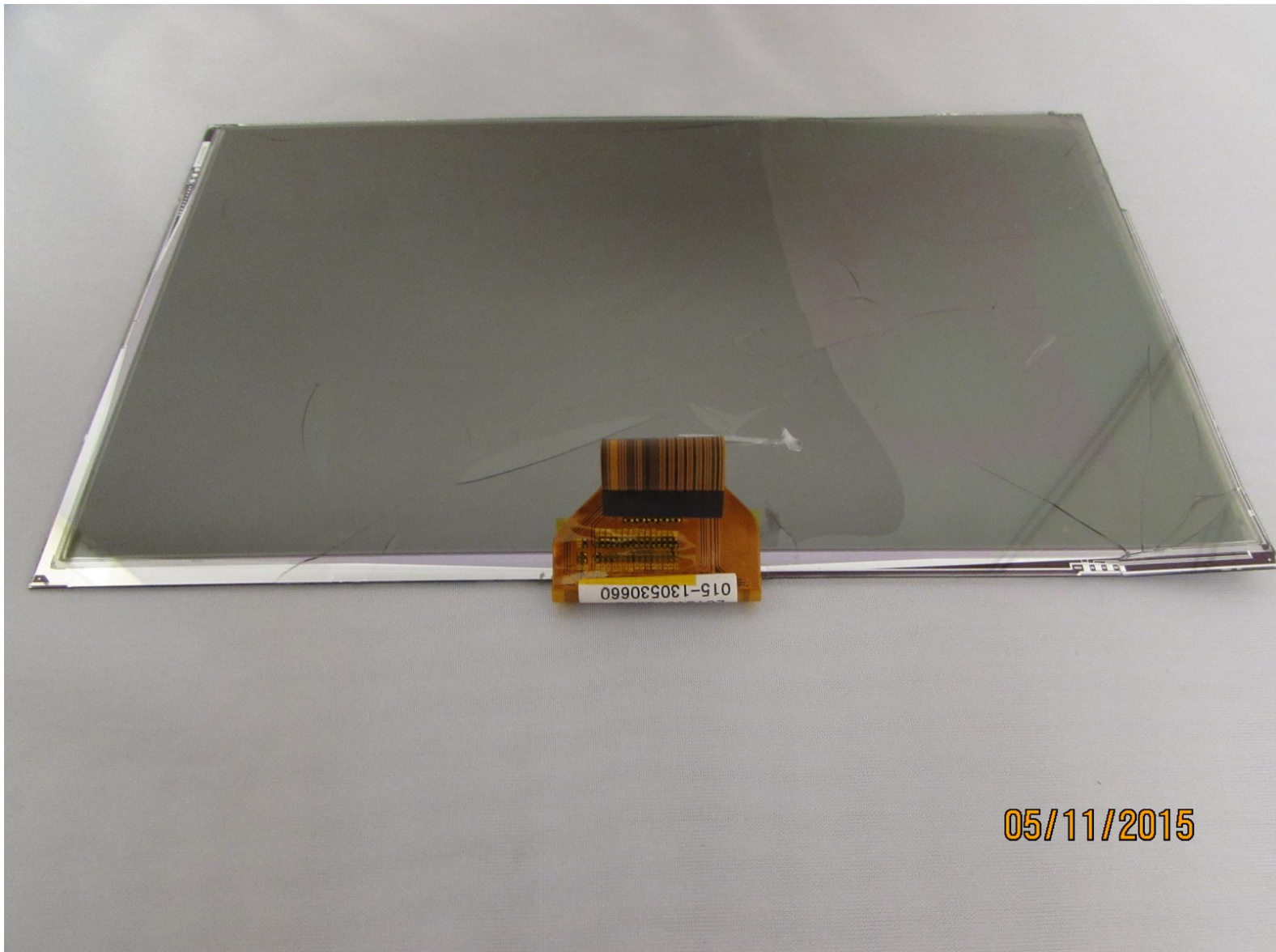




Visual Land Prestige 10 LCD Display Replacement

This guide will teach you how to replace the LCD display of the Visual Land Prestige 10 Tablet.

Written By: Connor Reese






TOOLS:

- [Magnetic Project Mat](#) (1)
- [Phillips #00 Screwdriver](#) (1)
- [iFixit Opening Tools](#) (1)
- [Soldering Iron](#) (1)
- [Spudger](#) (1)

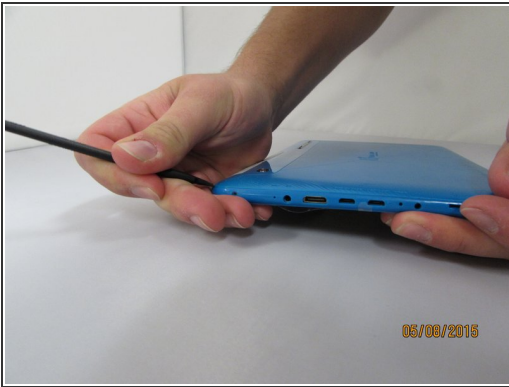
Step 1 — Back Case



- Remove the 3mm screws from bottom of tablet with the precision screwdriver and place on magnetic mat. label where they came from.

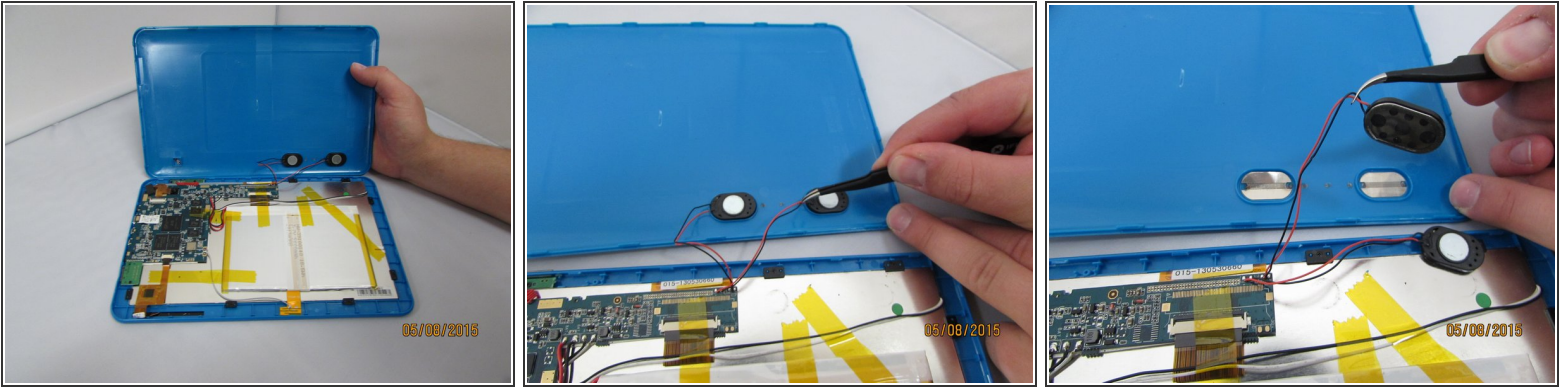
 All screws throughout this guide are the same 3mm size.

Step 2



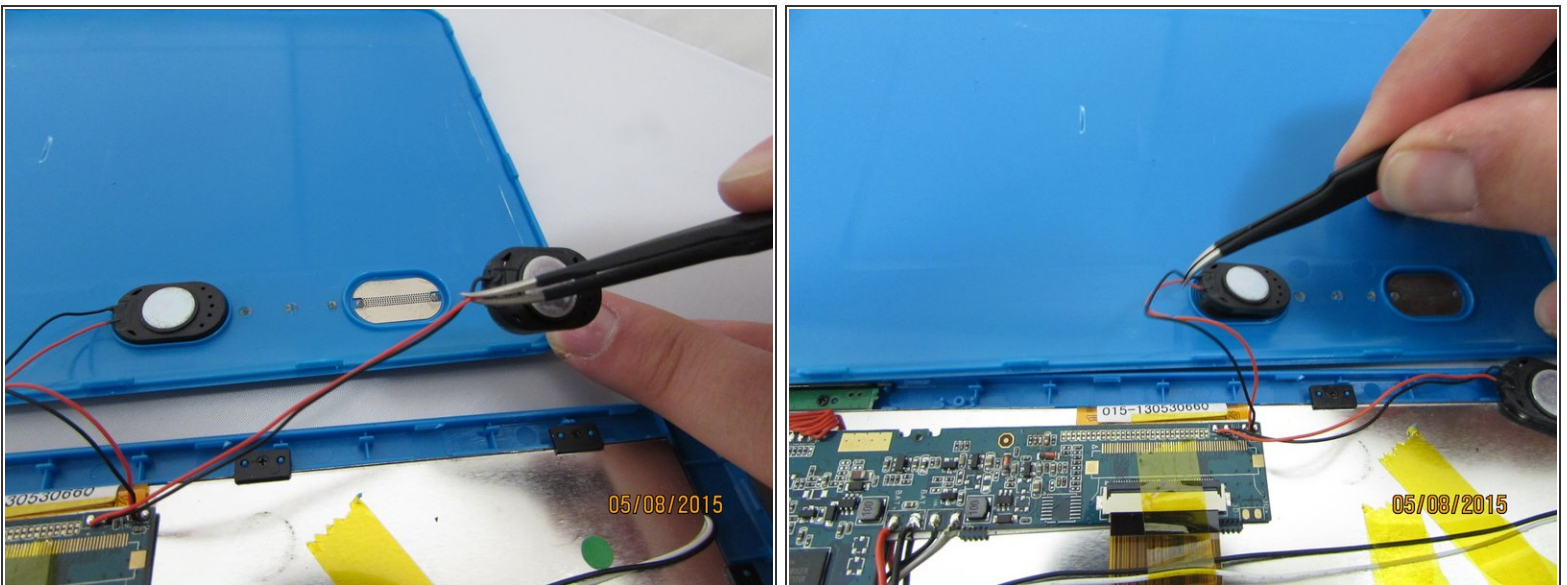
- Using the spudger, create a small opening to be used to open the back case.
- While holding the case open, insert the plastic opening tool to get a larger opening.
- Once you have a slight opening, insert the spudger and work around the edges, separating the back plate from the front.

Step 3



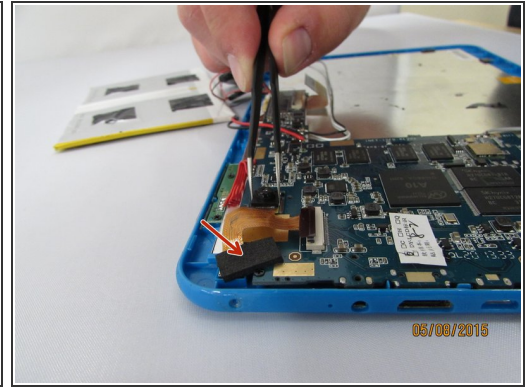
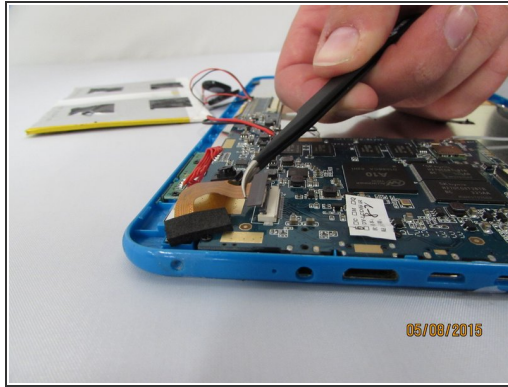
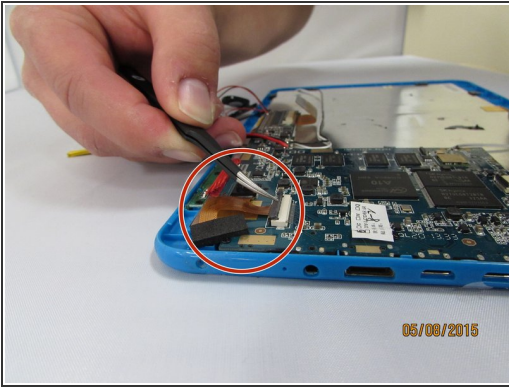
- now that the case is open, carefully remove the speakers and set aside.

Step 4



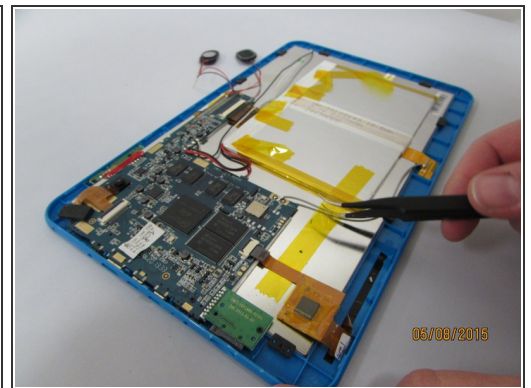
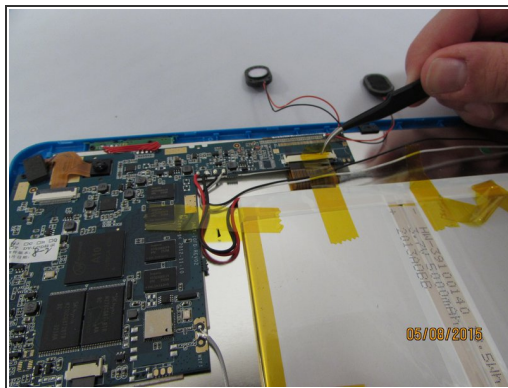
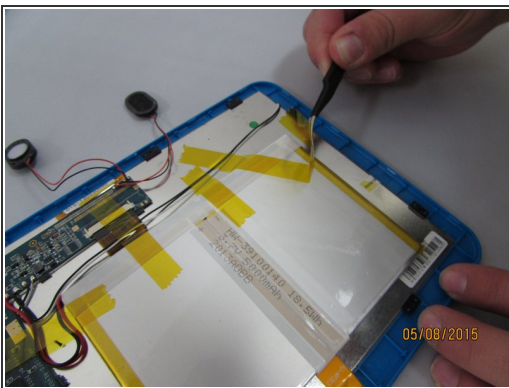
- Gently remove the speakers from the back case with tweezers and set the case aside.

Step 5 — Front Facing Camera



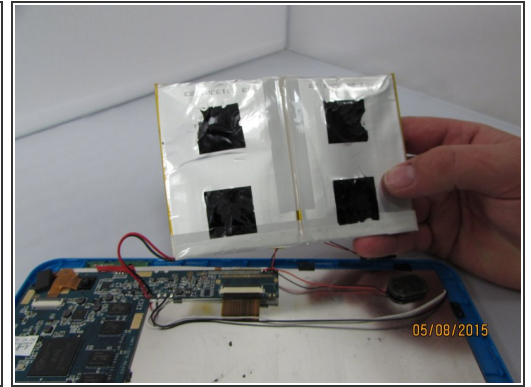
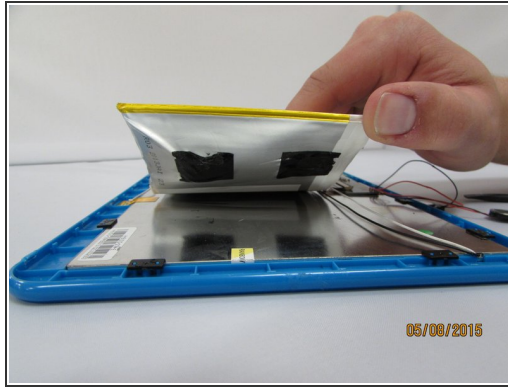
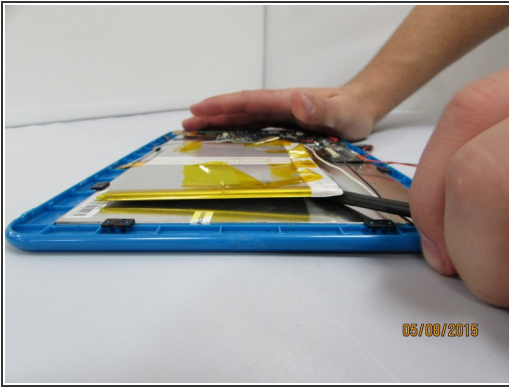
- Locate the Camera Housing. Gently grip and lift the small black tab until you feel an audible click.
- Gently remove the connector by pulling straight out, gripping the black connector head or as close as possible.
- Gently grip and pull up the front camera, covered by protective adhesive foam.
- Set aside the Camera housing.

Step 6 — Battery



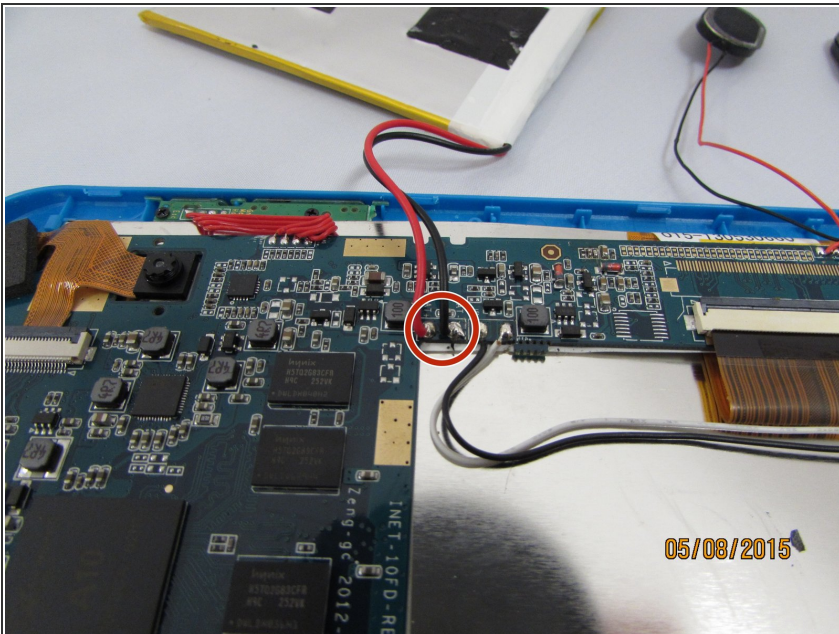
- Remove yellow tape from surrounding components.

Step 7



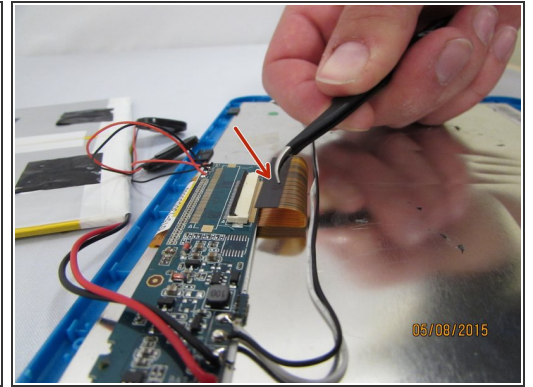
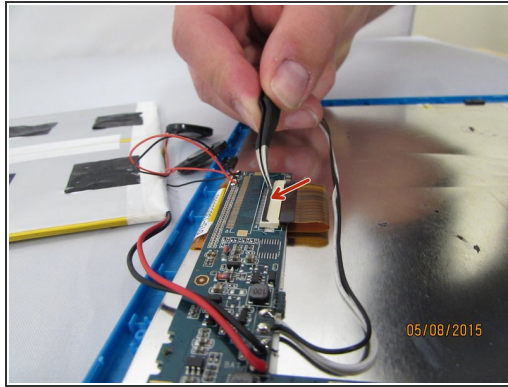
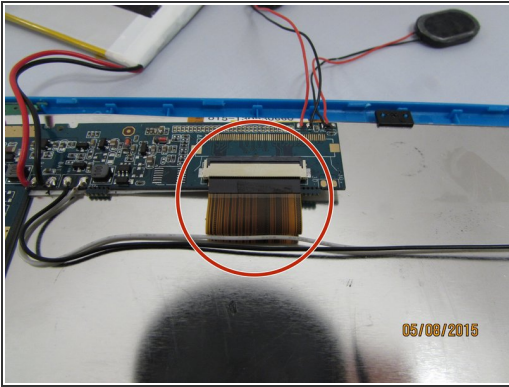
- insert the spudger and gently work around and underneath the battery.
- With the battery separated from the LCD Display, set it aside.
- ⓘ The battery is held down by very strong adhesive.

Step 8



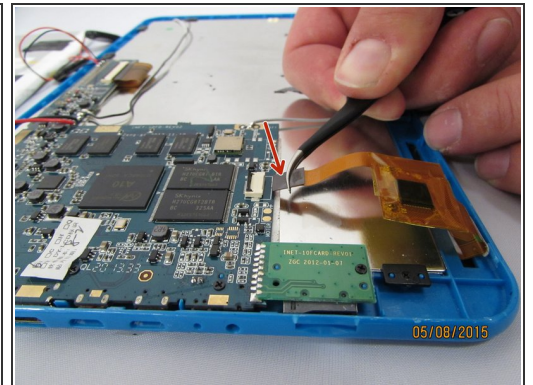
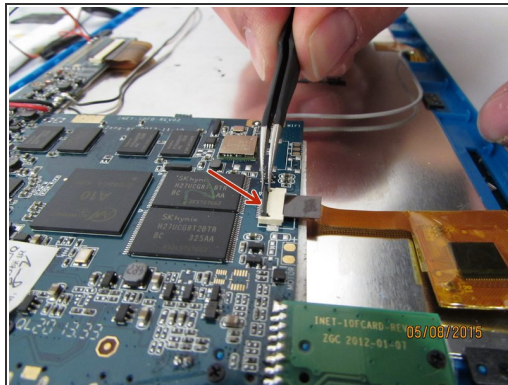
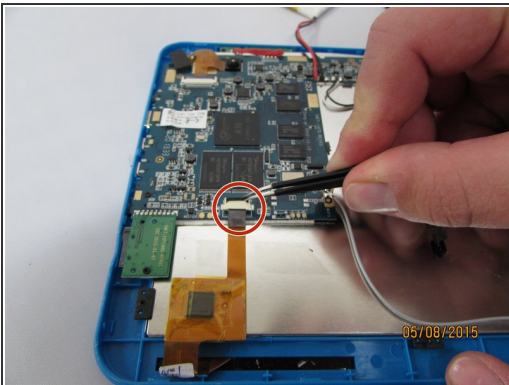
- Desolder and remove the 2 wires from the motherboard.
- ⚠ Use caution when desoldering to avoid damage to yourself or to the components.

Step 9 — Motherboard



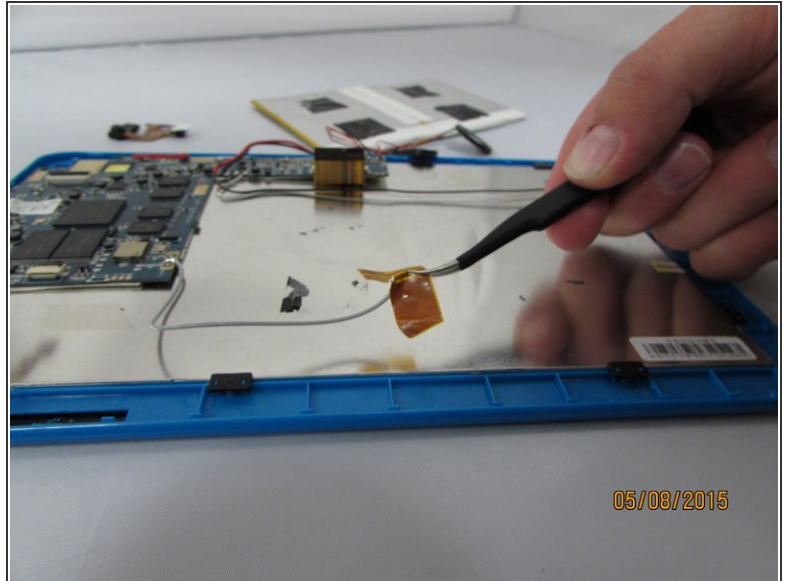
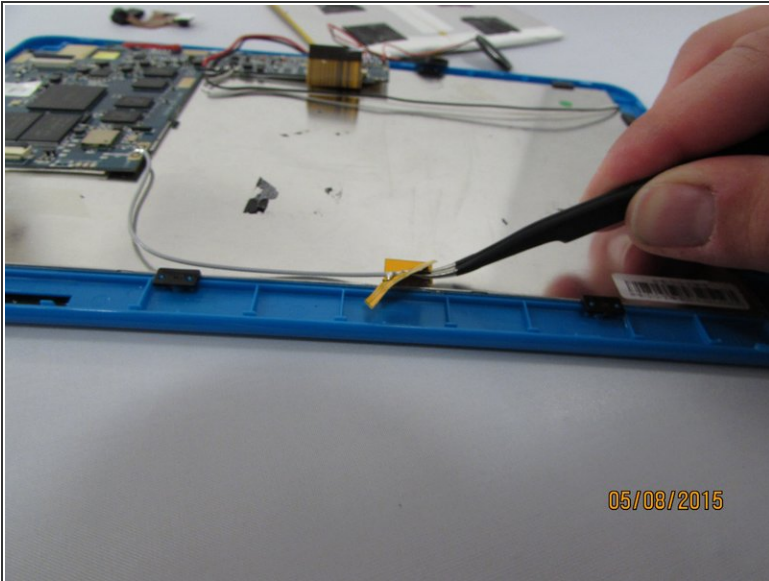
- Locate the LCD Connector.
- Using tweezers, grip the small black tab connected to the white plastic.
- Gently lift the tab towards you until it clicks.
- Remove the connector by pulling straight out, gripping the black connector head.

Step 10



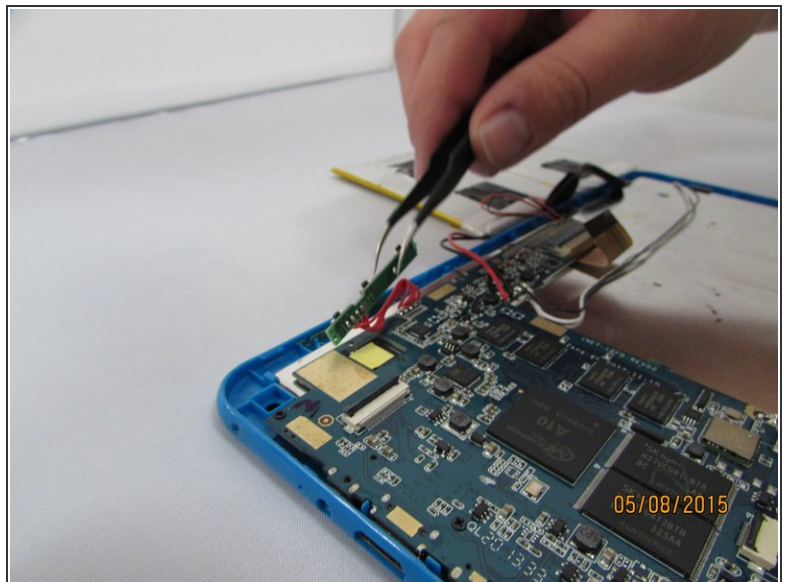
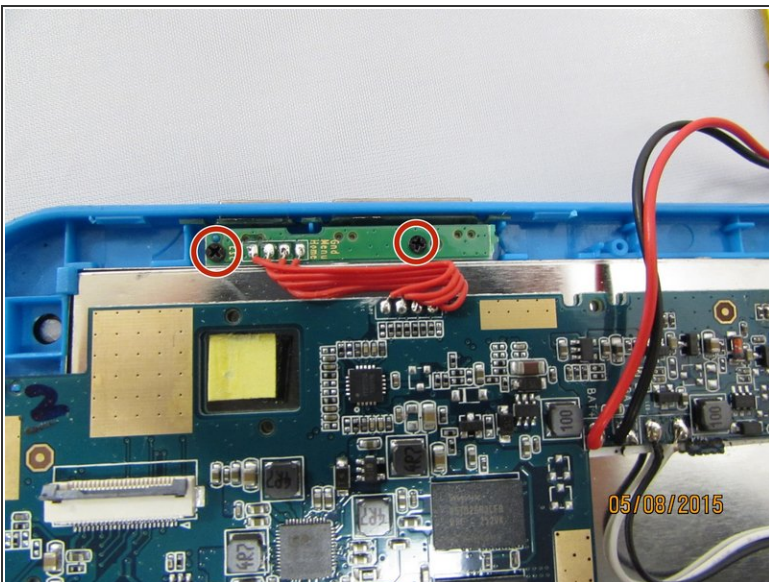
- Locate the Touchscreen connector and grip the forward-most black tab with the tweezers.
- Lift the tab towards you until you feel an audible click.
- Gently remove the connector by pulling straight out, gripping the black connector head.

Step 11



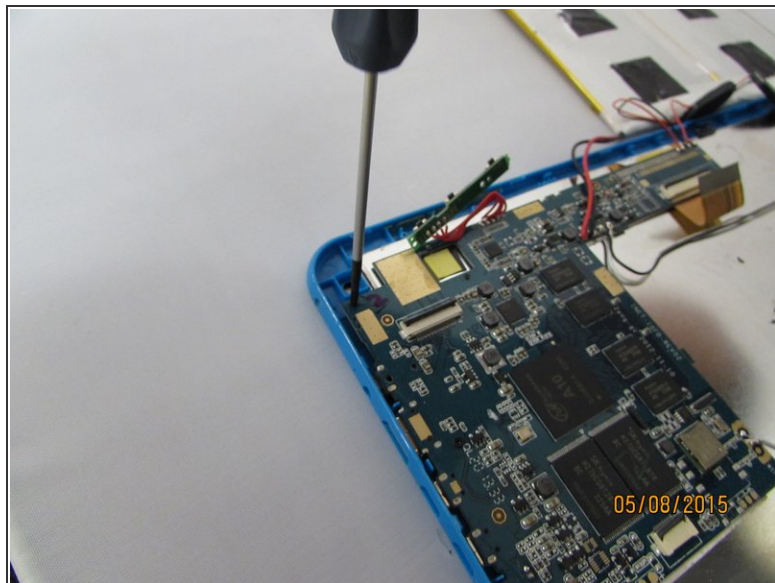
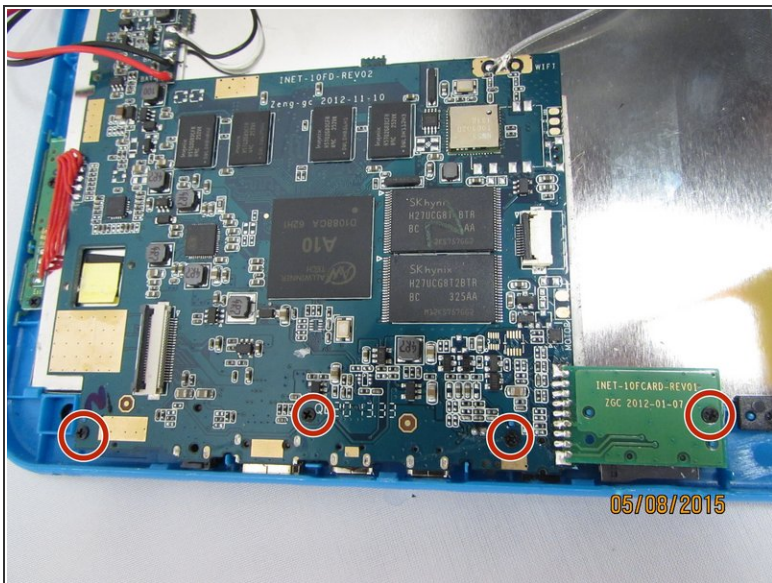
- Gently lift up the WiFi antenna and set aside.

Step 12



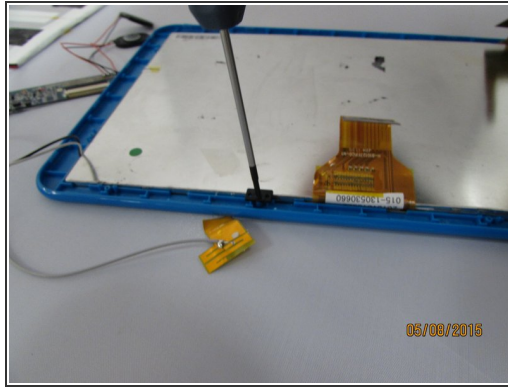
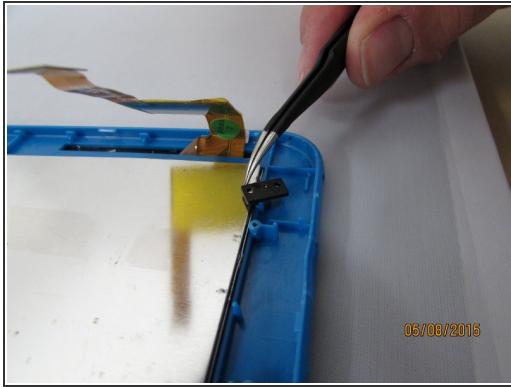
- Locate and remove the screws holding the volume and hold button controller. Set screws aside on magnetic mat and label them.
- Gently lift up on the controller and leave it hanging loose.

Step 13



- Remove screws located on motherboard.
- Place on magnetic mat and label them
- Gently remove the Motherboard and any wires connected to it and set it aside on a static free surface.

Step 14 — LCD Display



- Remove the screws and plastic tabs holding the LCD Display and place them on the magnetic mat. Label them.
 - Gently remove the LCD Display and backlight by lifting up the LCD Connector with your fingers.
 - Set aside the LCD Assembly.
- i** The LCD display and backlight are separated from one another. Be sure to remember how they are aligned when putting the device back together.

To reassemble your device, follow these instructions in reverse order.