



# Visual Land Prestige 7L Screen Replacement

This guide will show how to replace the front screen of your device. It does not directly address the replacement of the capacitive touchscreen located inside of the device.

Written By: Zach



---

## INTRODUCTION

If your device's front screen is broken or cracked, this guide will show you how to replace it.

---



### TOOLS:

- [Phillips #00 Screwdriver](#) (1)
  - [Spudger](#) (1)
-

## Step 1 — Back Panel




- Remove the two 8mm Phillips Head screws located at the bottom of your device.

## Step 2



- Insert the spudger between the two pieces of the case around the media ports and pry them apart.

 We found the best way to get the spudger inside the case was to insert it into the SD card slot. Be sure to only insert the spudger a shallow amount and be careful not to damage any of the inside of the device.

- Finish unsnapping each plastic piece holding the device together along the bottom.

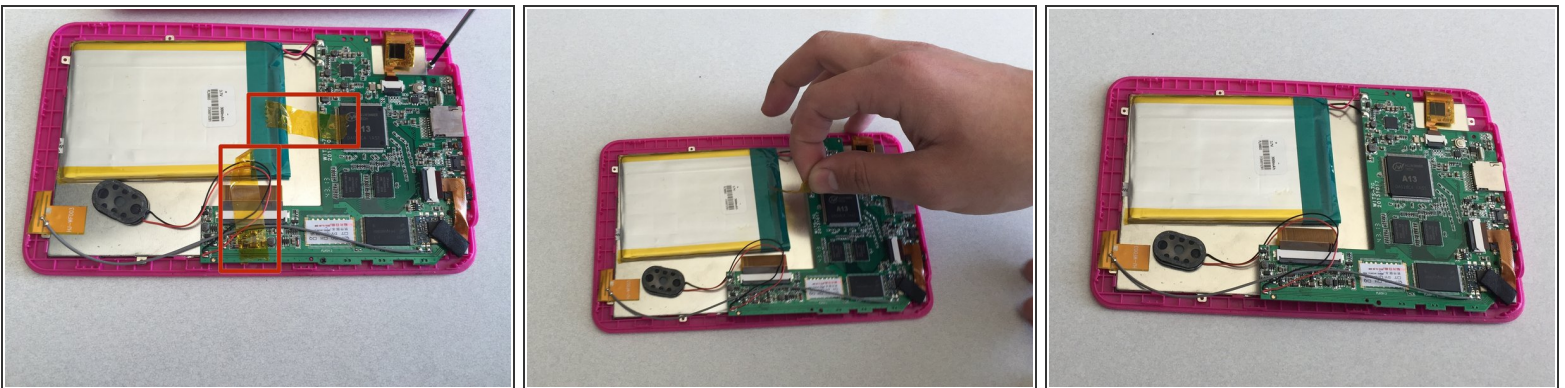


## Step 3



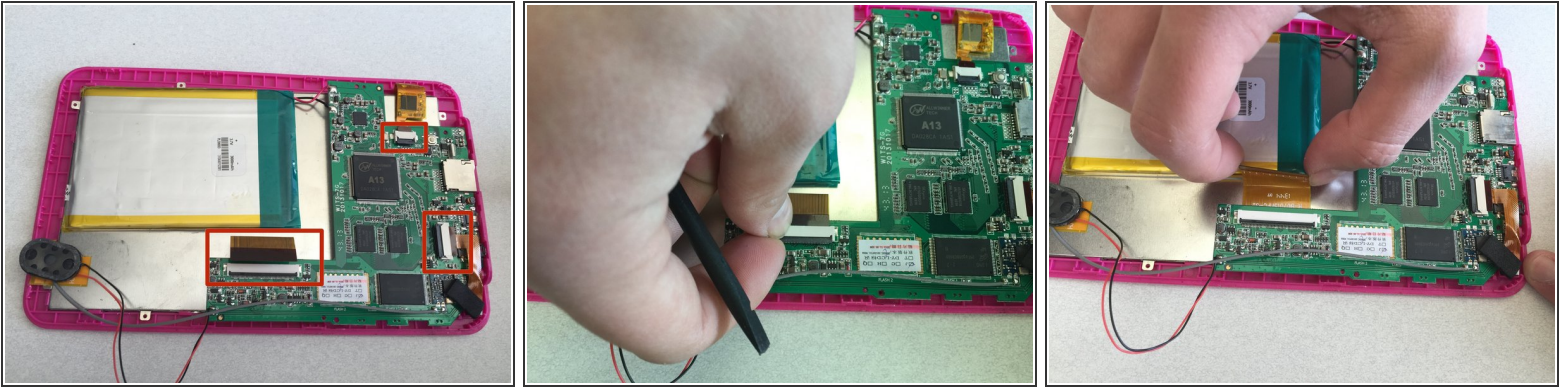
- Move the spudger down the rest of the case, separating each side, and finally the top.
- Pull the back off and place it to the side.
- ⓘ Without a back panel for protection, be sure place your device on the table screen-side down to avoid damaging the internal circuitry.

## Step 4 — Screen



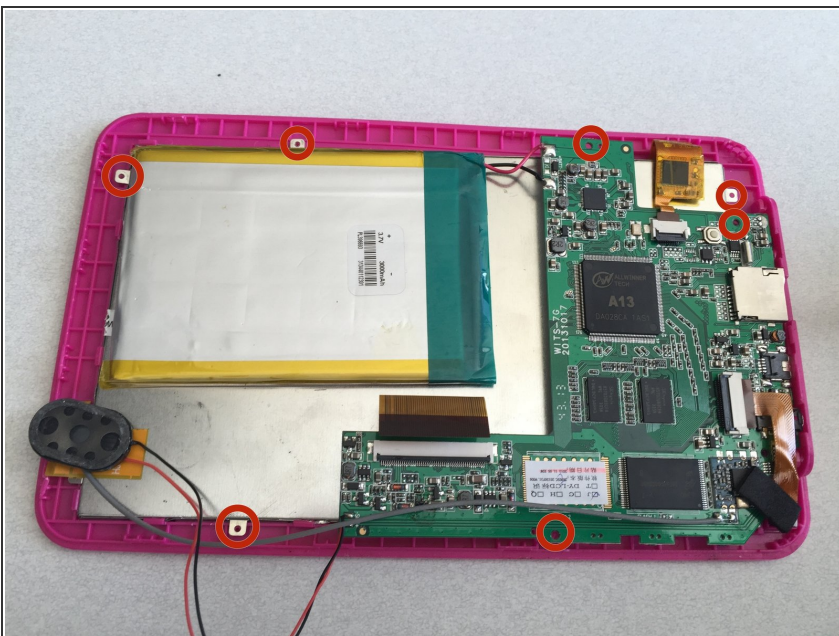
- Remove the tape holding the motherboard, wires, and connectors in place.

## Step 5



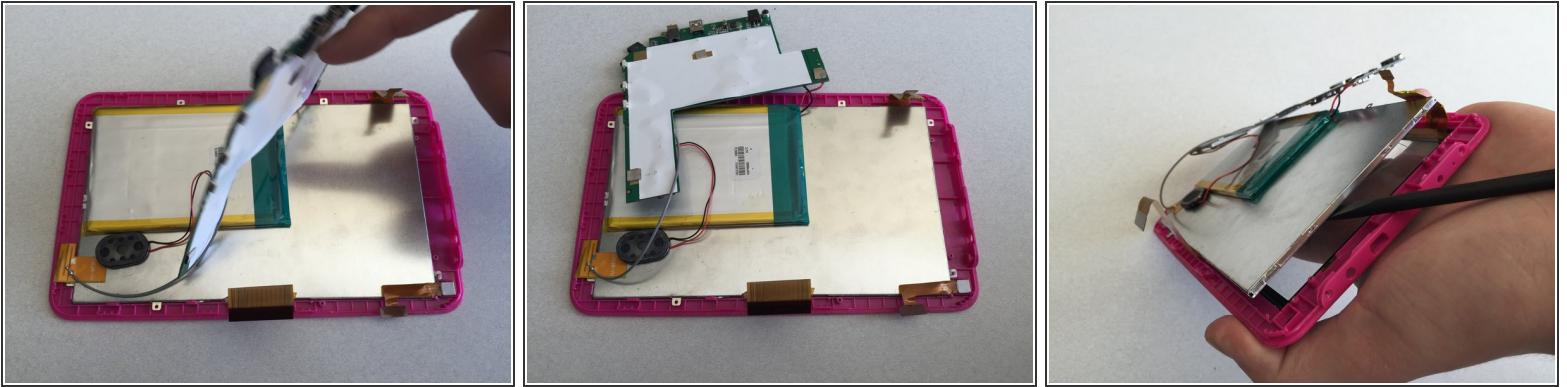
- Unclip the three connectors by gently pulling the rear panel up and away from the motherboard.
- ⓘ For more information on unclipping connectors see this [How To Guide](#)
- Pull out each of the gold connections.
- ⓘ The gold connections will disconnect from the motherboard, but not entirely from the device. Let them sit loosely where they are attached and be careful not to tear them when working in their proximity on the device.

## Step 6



- Remove the seven 4mm Phillips Head screws that hold the touchscreen panel and motherboard together.

## Step 7



- Gently flip over the motherboard and begin to use the spudger to pry away the touchscreen panel from the front screen.

To reassemble your device, follow these instructions in reverse order.