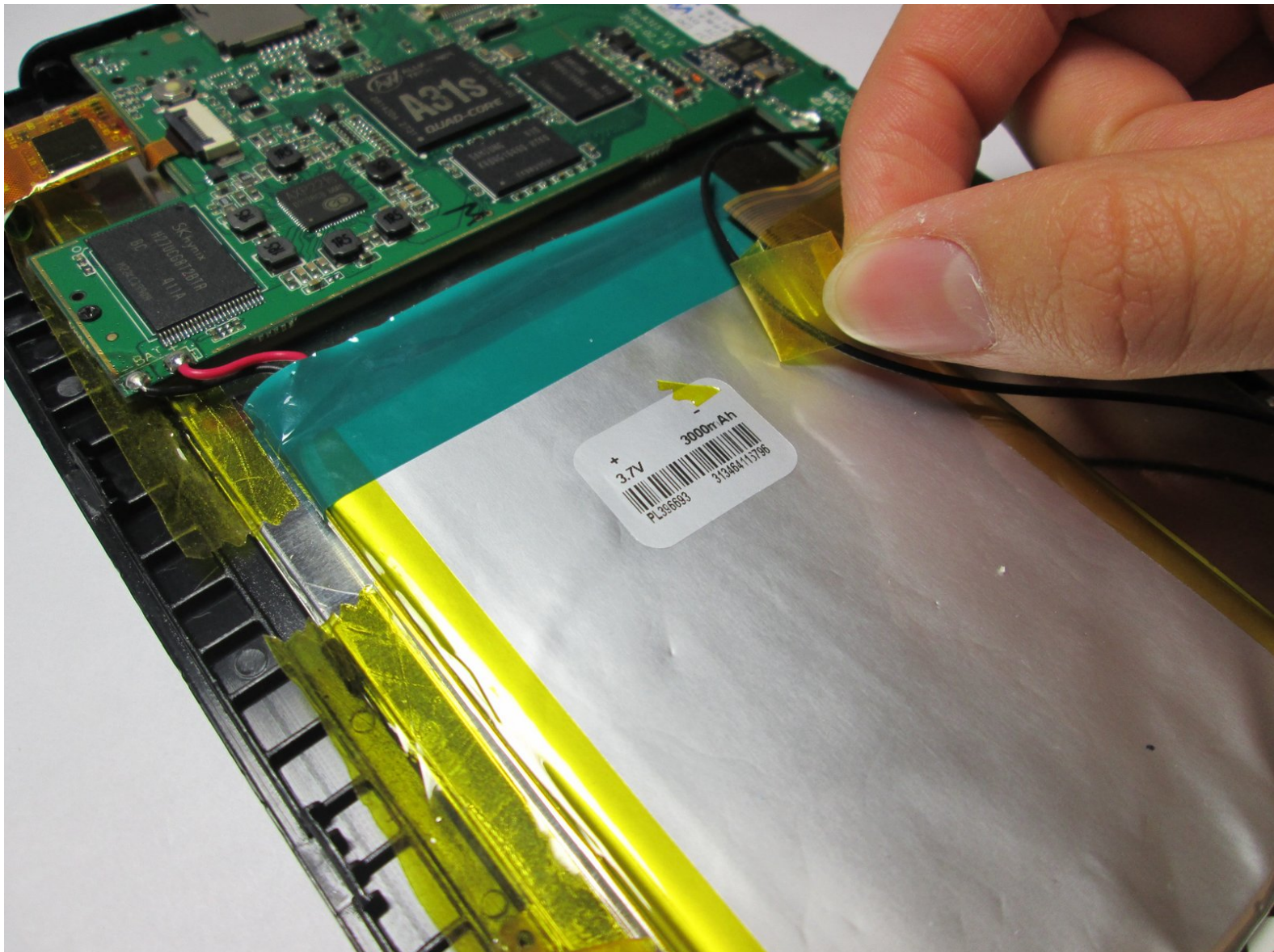




Visual Land Prestige Elite 7Q Battery Replacement

Replace the dead or failing battery on your Visual Land Prestige Elite 7Q.

Written By: Sabrina Scholten



INTRODUCTION

Complete the following guide to replace a dead or failing battery in the Visual Land Prestige Elite 7Q.



TOOLS:

- [iFixit Opening Tools](#) (1)
 - [Plastic Cards](#) (1)
 - [Portable Soldering Iron](#) (1)
 - [Phillips #000 Screwdriver](#) (1)
-

Step 1 — Battery



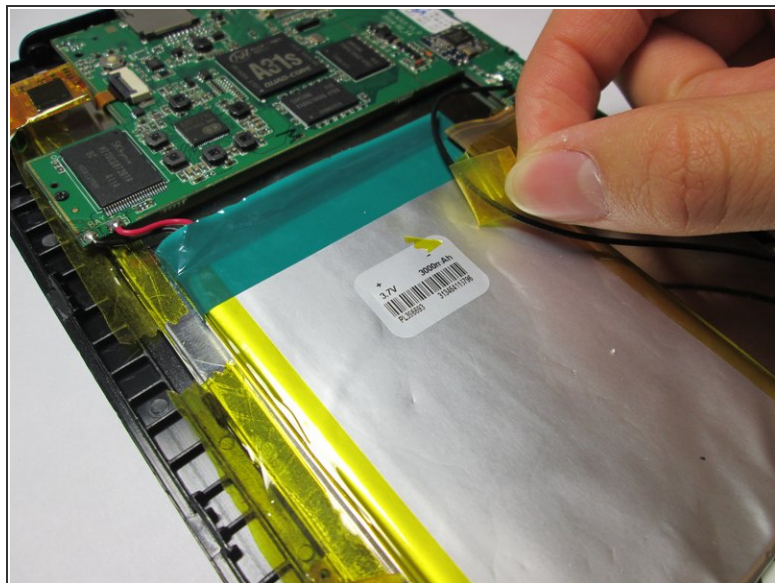
- At the bottom of the tablet, remove the two 3.6mm screws with a Phillips #000 screwdriver.

Step 2



- Wedge a plastic opening tool into the edges of the tablet to pry it open.

Step 3



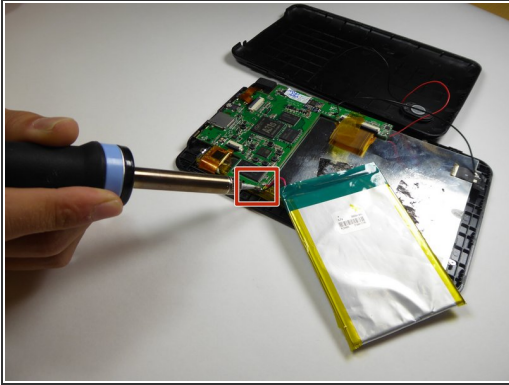
- Peel off the yellow tape holding down the battery.

Step 4



- Use a plastic card to loosen the battery from the tablet. Note that it will be sticky underneath the battery.

Step 5



⚠ Soldering iron gets hot. For information on how to use a soldering iron, click [here](#).

- Use a soldering iron to detach the battery wires from the motherboard.
- Replace the battery.

To reassemble your device, follow these instructions in reverse order.