



Visual Land Prestige Elite 7Q Digitizer / Front Screen Replacement

Replace the digitizer or front screen on your Visual Land Prestige Elite 7Q.

Written By: Sabrina Scholten



INTRODUCTION

Complete the following guide to replace a broken digitizer or front screen on your tablet.



TOOLS:

- [iFixit Opening Tools](#) (1)
 - [Metal Spudger Set](#) (1)
 - [Plastic Cards](#) (1)
 - [Phillips #000 Screwdriver](#) (1)
-

Step 1 — Digitizer / Front Screen



- At the bottom of the tablet, remove the two 3.6mm screws with a Phillips #000 screwdriver.

Step 2



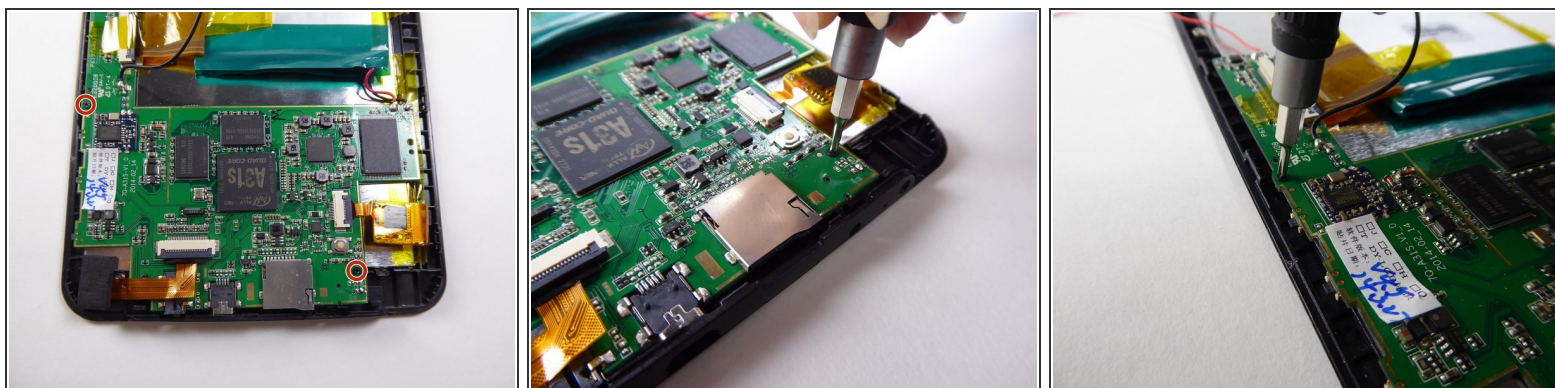
- Wedge a plastic opening tool into the edges of the tablet to pry it open.

Step 3



- Wedge a curved metal spudger under the speaker in order to remove it.
- ⓘ The speaker is held in place by an adhesive and can be difficult to remove.

Step 4



- Use a Phillips #000 screwdriver to remove the two 3.6mm screws.

Step 5



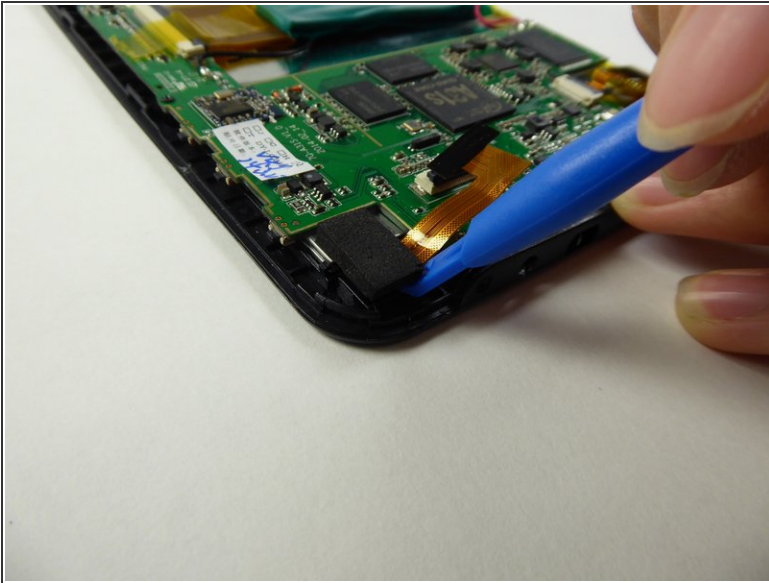
- Use a plastic opening tool to lift the black tab.

Step 6



- Carefully lift and remove the ribbon cable from the black tab.

Step 7



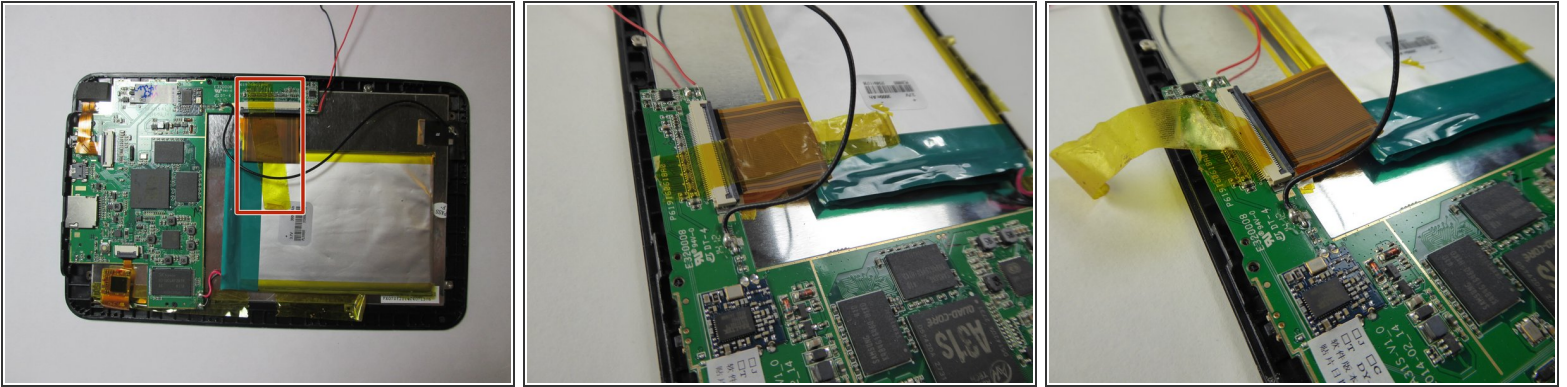
- Use a plastic opening tool to remove the camera.

Step 8



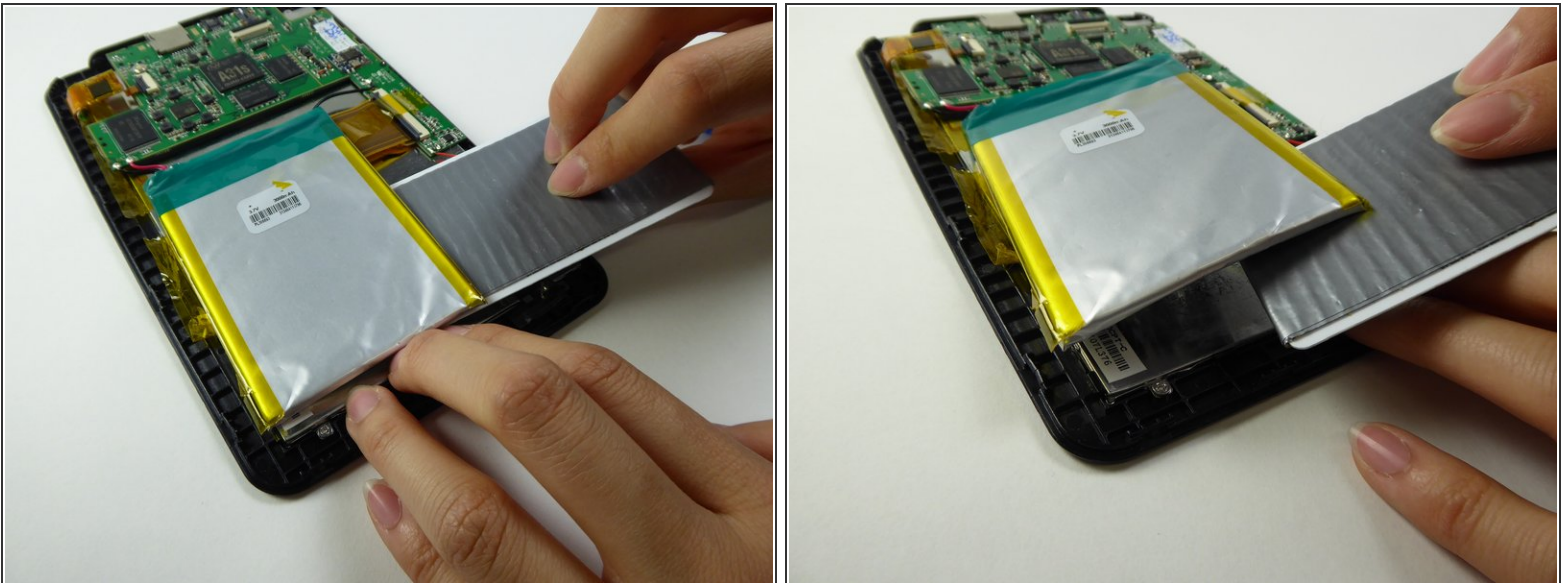
- Use a Phillips #000 screwdriver to remove the 3.6mm screw.

Step 9



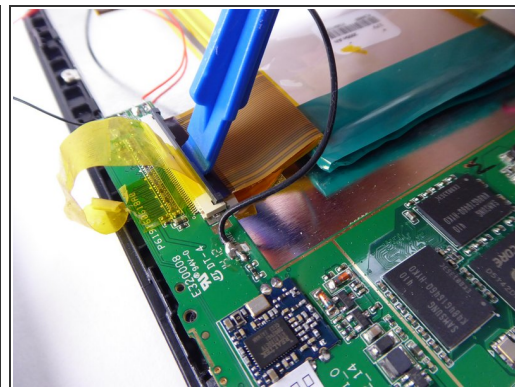
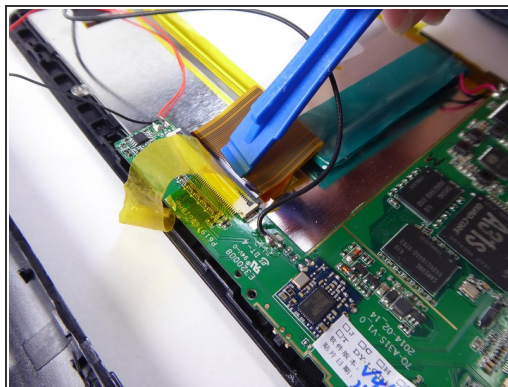
- Lift the tape holding down the battery.

Step 10



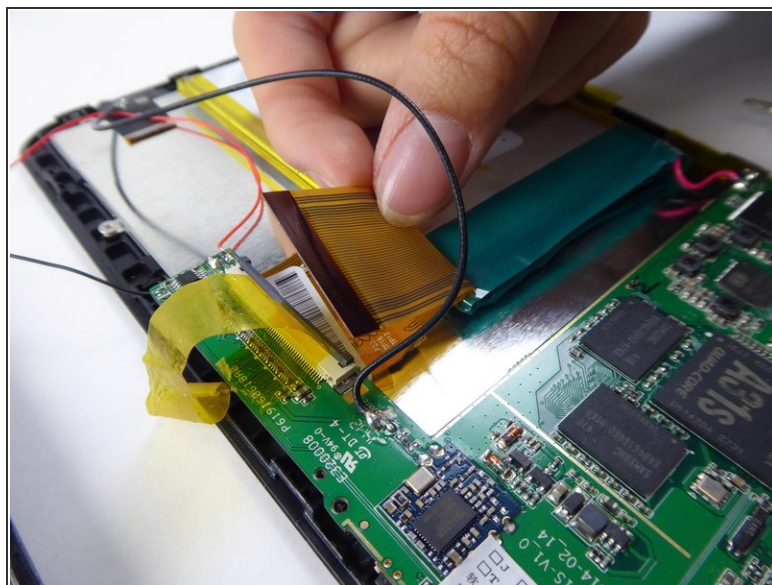
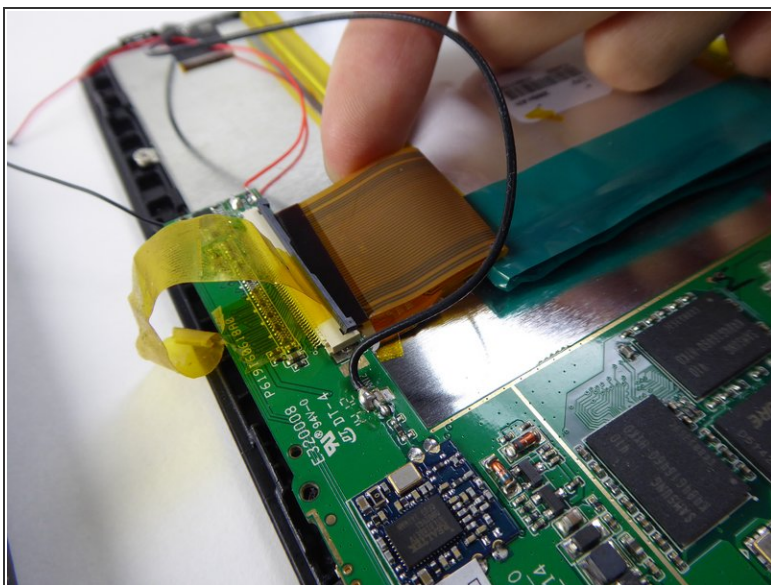
- Wedge a plastic card underneath the battery to remove it.

Step 11



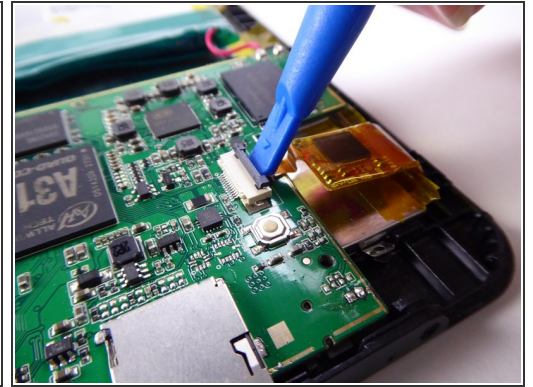
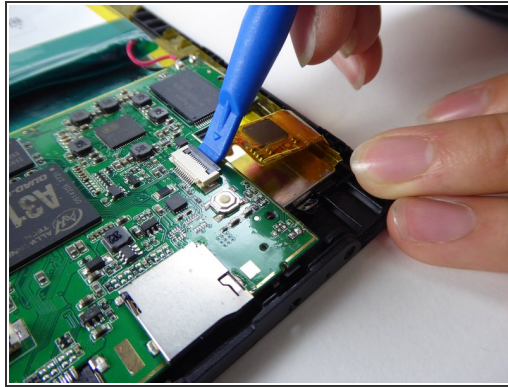
- Use a plastic opening tool to lift the black tab.

Step 12



- Carefully lift and remove the ribbon cable from the black tab.

Step 13



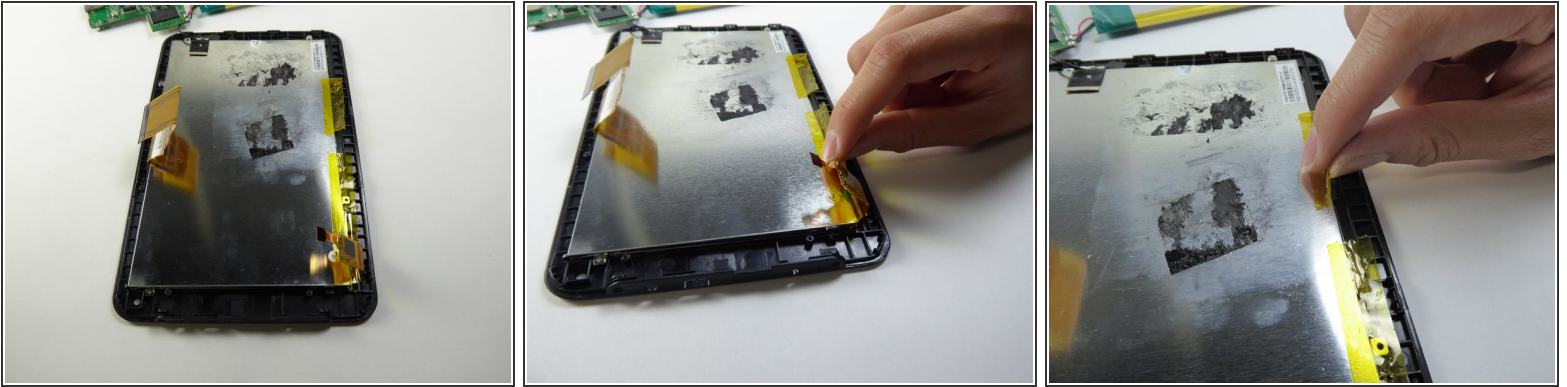
- Use a plastic opening tool to lift the black tab.

Step 14



- Safely remove the battery and motherboard from the tablet.

Step 15



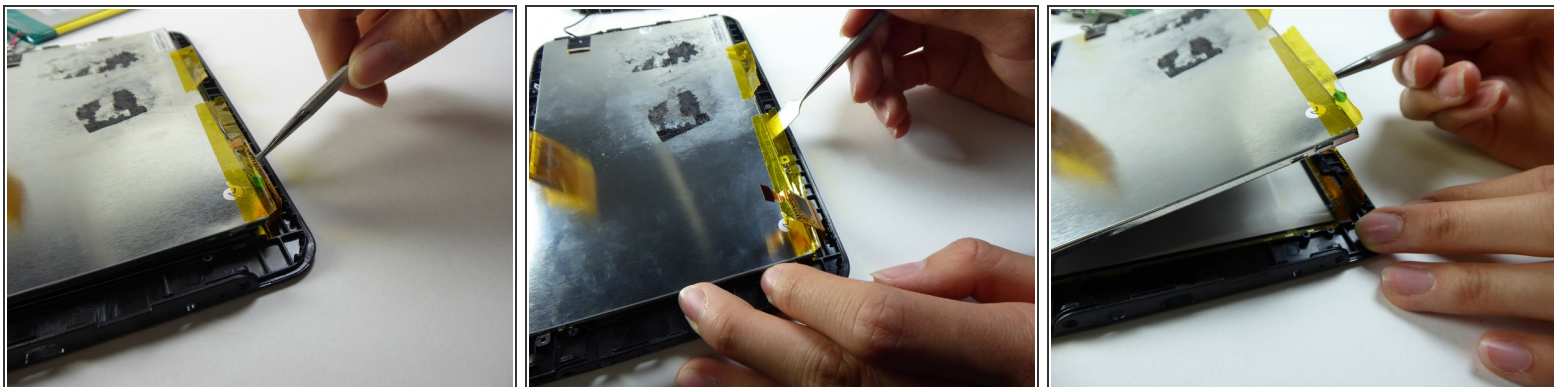
- Lift the tape on the sides.

Step 16



- Use a Phillips #000 screwdriver to remove the three 2.5mm screws.

Step 17



- Wedge a metal spudger underneath the LCD screen to remove it.

Step 18



- Replace the front screen to replace the digitizer.

To reassemble your device, follow these instructions in reverse order.