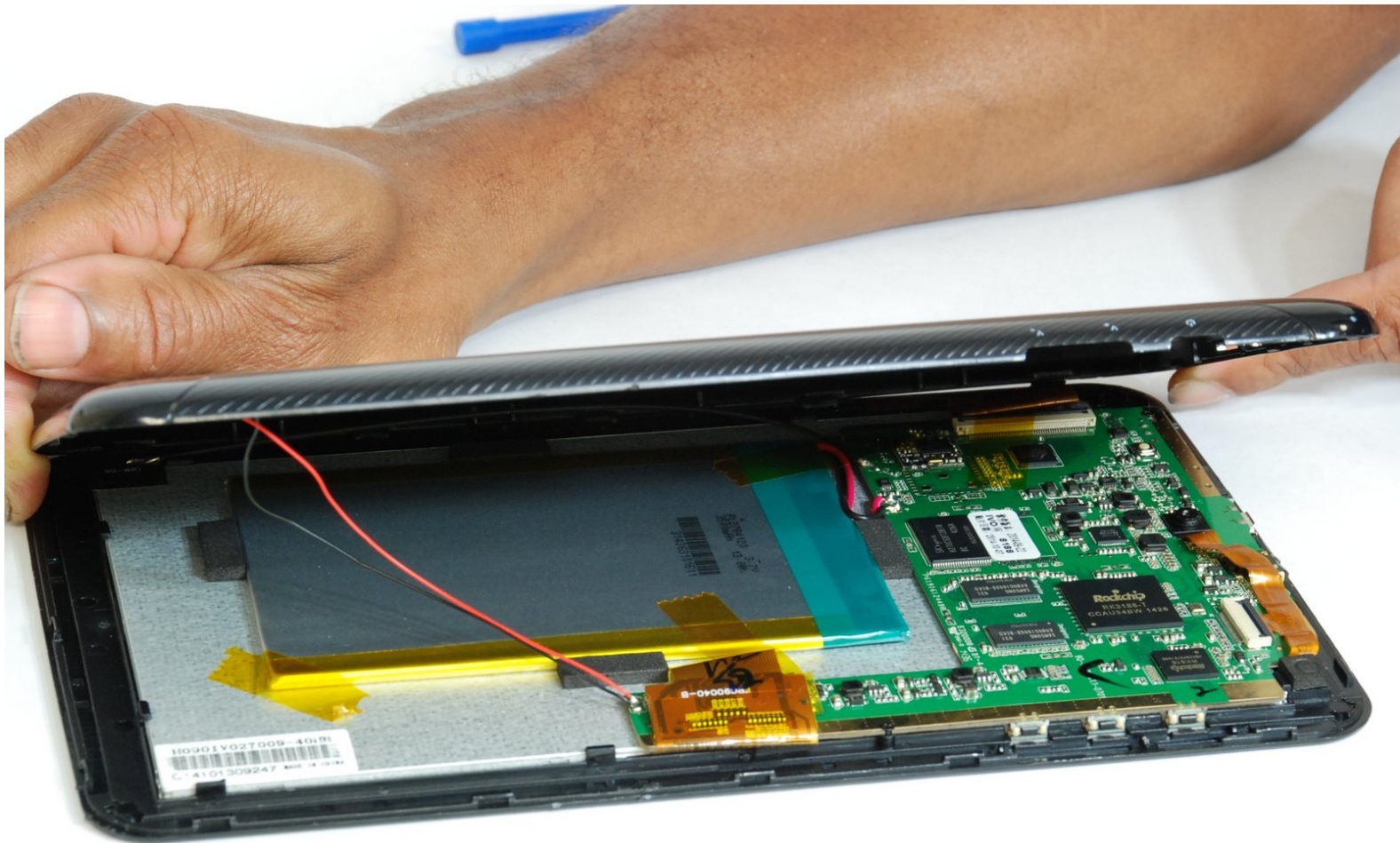




# Visual Land Prestige Elite 9Q Battery Replacement

In this guide you will be shown how to replace the battery in the Visual Land Prestige Elite 9Q.

Written By: LAWRENCE SMITH



---

## INTRODUCTION

Before starting this guide its important to note that the battery replacement requires soldering. Don't know how to solder? Don't worry! You can learn how right [here](#).

---

### TOOLS:

- [iFixit Opening Tools](#) (1)
  - [Tweezers](#) (1)
  - [Soldering Iron](#) (1)
-

## Step 1 — Battery



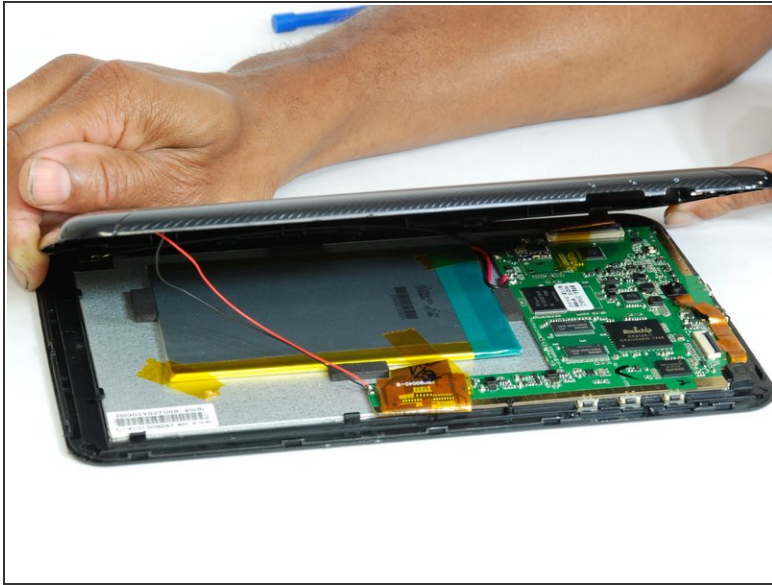
- Using the large plastic opening tool, start along a side of the device and apply light pressure in the seam between the top and bottom outer covers.
  - Maneuver the smaller plastic opening tool at the spot of the large opening tool and slowly slide along the edge.
- i** You should feel each plastic connection begin to loosen.*

## Step 2



- Move tool around each connection, and continue around the device until all connections have been loosened.
- ⚠ The user risks damaging the connections if tool is slid too fast.**

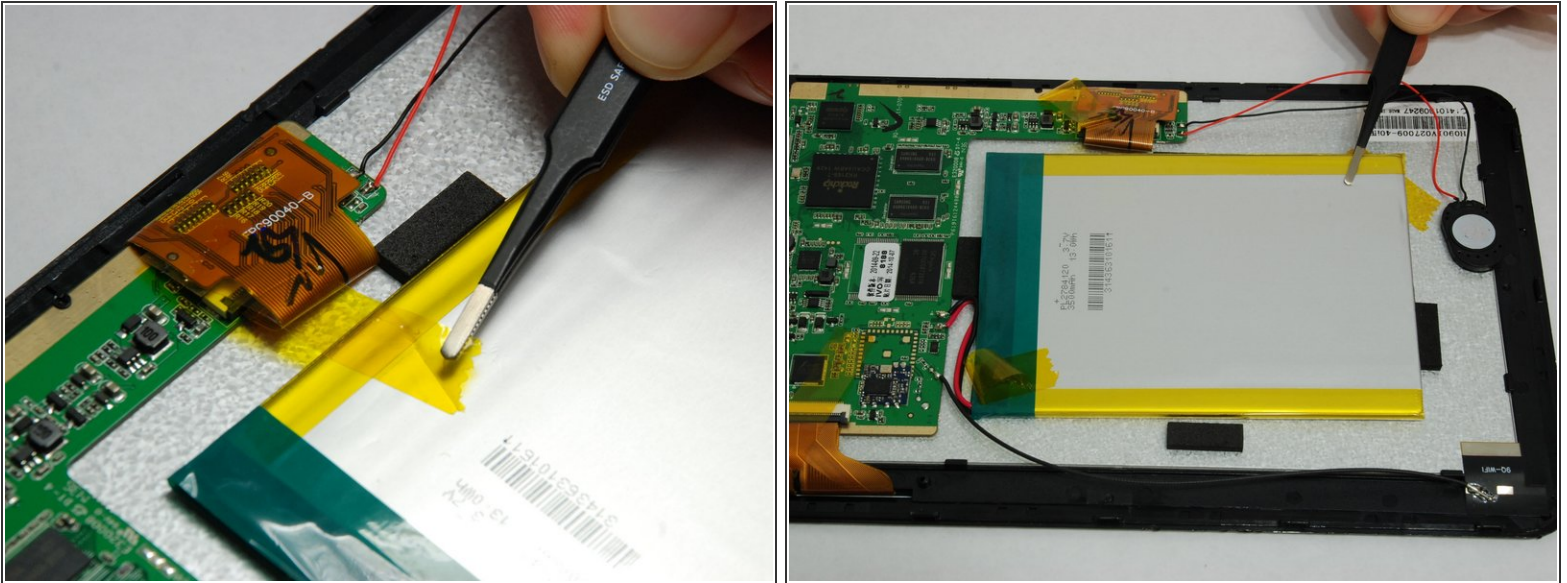
### Step 3



- Once all connections have been loosened and using a soft surface, place the device onto its screen, and lift gently on the outer casing.
- ⓘ *Open the casing and lay as shown keeping the speaker wires loose.*

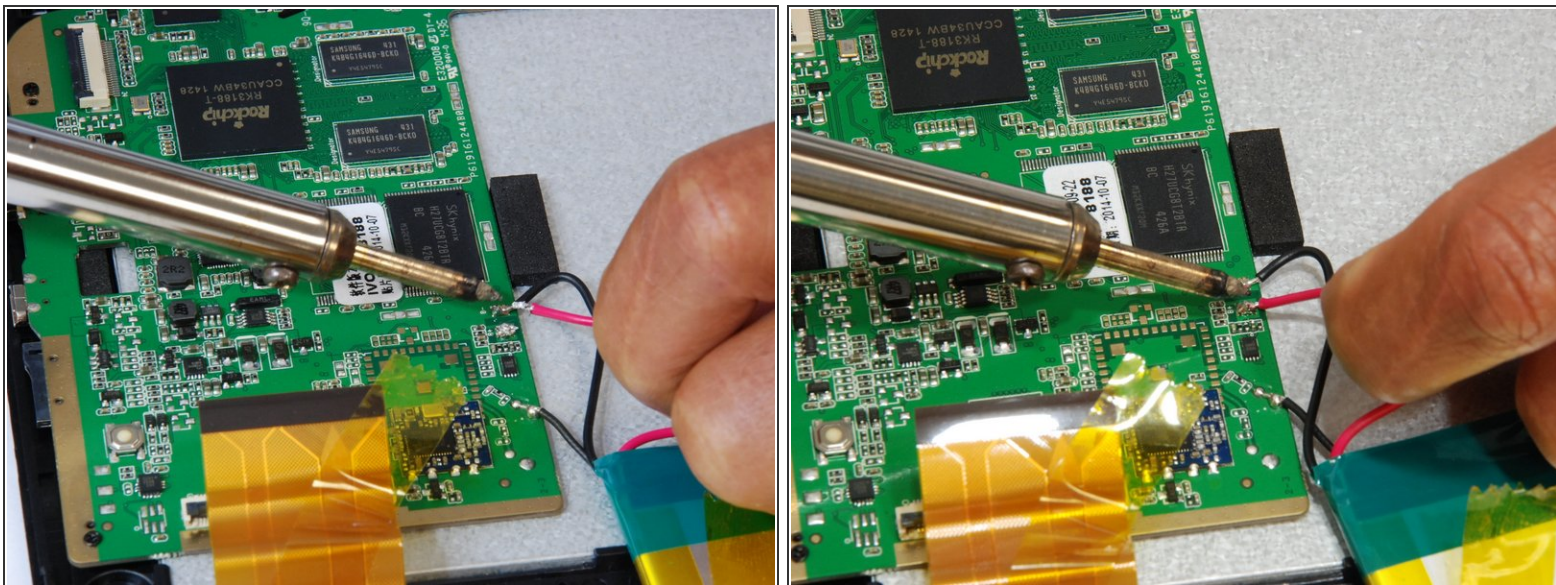


## Step 4



- Use wide tip tweezers to gently remove the three pieces of tape attached to battery.
- Once the tape has been removed, the battery will be free from the tablet except for the wired connections to the circuit board.
- ⚠ **Be careful not to severely damage the tape as this is what will hold the battery in place.**
- Mark where the positive (red) and negative (black) wires are on the circuit board.
- 📌 Markings will be used for reassembly.

## Step 5



- Before disconnecting battery, review [Soldering Tips](#) to ensure proper soldering.
- Use soldering iron to remove +(red) battery lead.
  - ⓘ *Touch the positive wire to a metal surface acting as a ground to discharge the battery. Depending on the charge level of the battery, it may take up to 30 seconds to insure that it is fully discharged.*
  - ⚠ *Ensure that the wires and solder do not touch each other, for this will damage the device*
- Remove the -(black) battery lead.
  - ☑ Remove and discard the old battery. Insert new battery and solder the positive and then the negative terminals to the circuit board.

To reassemble your device, follow these instructions in reverse order.