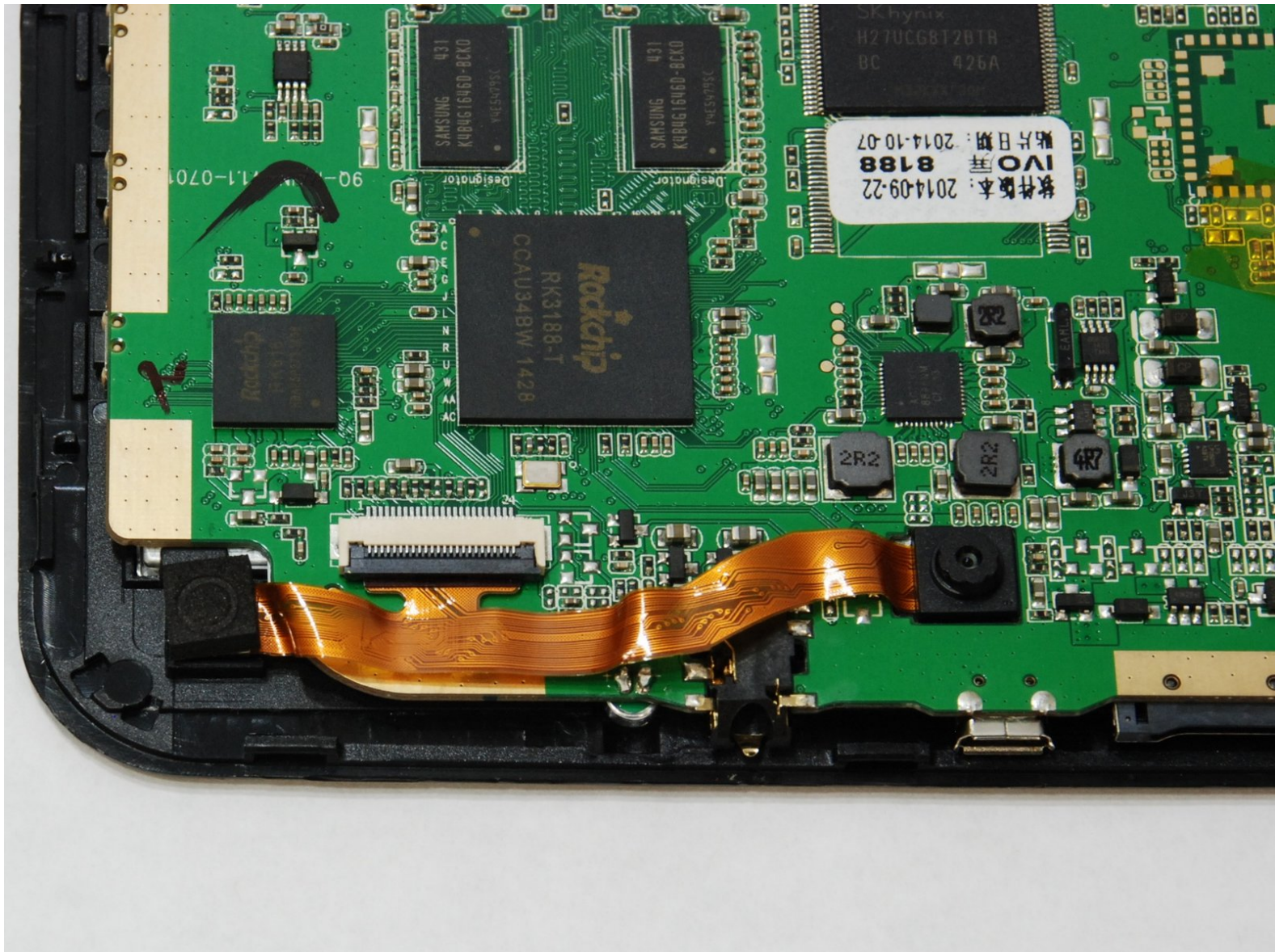




# Visual Land Prestige Elite 9Q Front and Rear Facing Camera Replacement

This guide will provide step-by-step instructions to help remove and replace the camera component.

Written By: Aaron



---

## INTRODUCTION

This guide demonstrates the proper way to remove the cameras in order to reconnect or replace them. This requires no soldering or screws.

---

### TOOLS:

- [iFixit Opening Tools](#) (1)
  - [Tweezers](#) (1)
-

## Step 1 — Front and Rear Facing Camera



- Using the large plastic opening tool, start along a side of the device and apply light pressure in the seam between the top and bottom outer covers.
  - Maneuver the smaller plastic opening tool at the spot of the large opening tool and slowly slide along the edge.
- i** You should feel each plastic connections begin to loosen.*

## Step 2



- Move tool around each connection, and continue around the device until all connections have been loosened.
- ⚠ The user risks damaging the connections if tool is slid too fast**

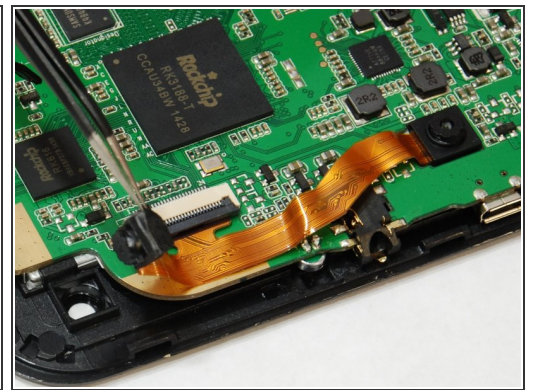
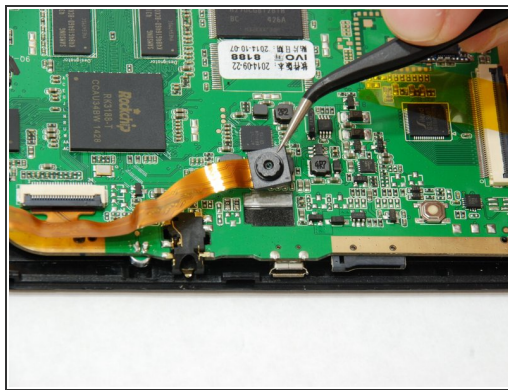
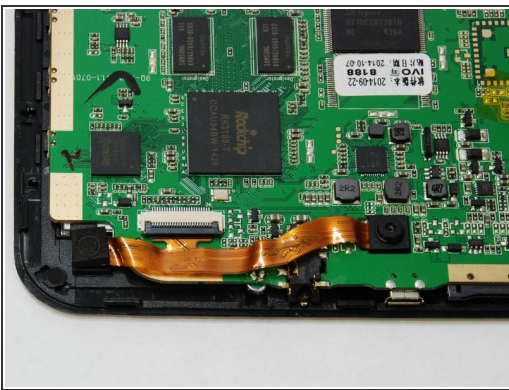


### Step 3



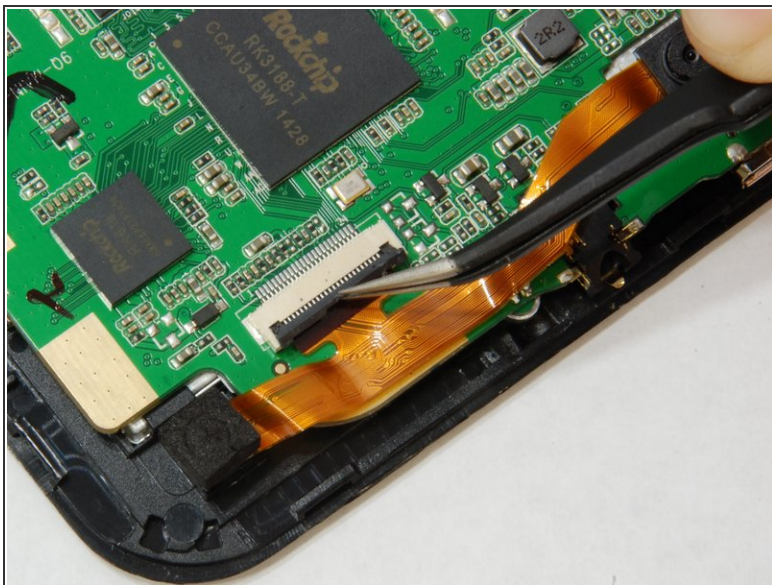
- Once all connections have been loosened and using a soft surface, place the device onto its screen.
- ❗ *Open the casing and lay as shown keeping the speaker wire loose, and the camera component is highlighted in red.*

### Step 4



- Using hook tweezers, gently separate the glued cameras away from the circuit board.
- ❗ *Allow each camera to rest on circuit board while proceeding to the ZIF (zero insertion force) on the circuit board.*
- ⚠ *Avoid touching camera lens with the tweezers.*

## Step 5



- Maneuver the hook tweezers to flip up the black hinged ZIF connector to disconnect camera module.
- After ZIF connector is flipped up, the camera module may be removed.

To reassemble your device, follow these instructions in reverse order.