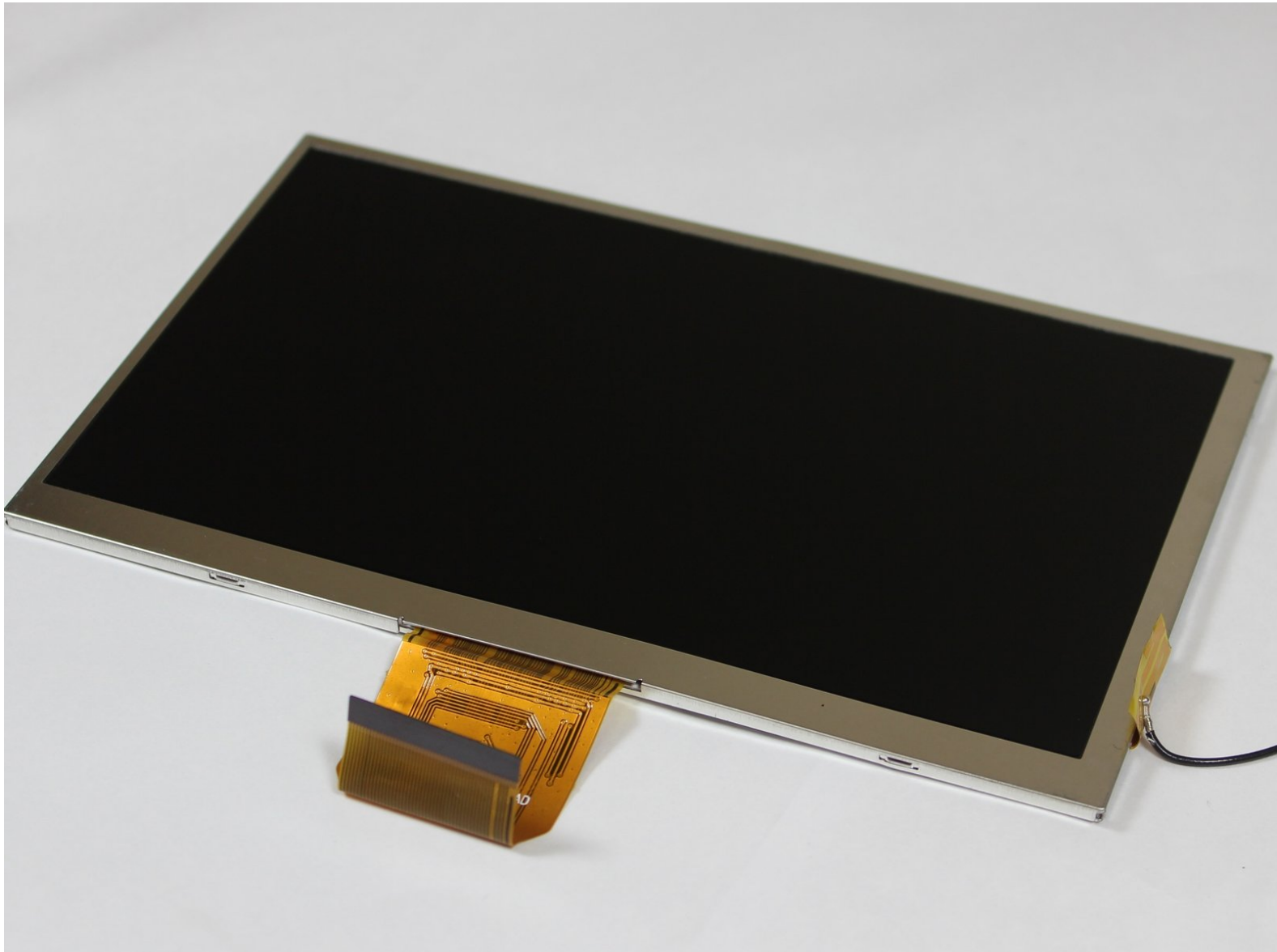




Visual Land Prestige Pro 7D LCD Display Replacement

Follow this guide to replace the LCD Display on your Prestige Pro 7D.

Written By: Matt Ferrari



INTRODUCTION

This guide will show you how to replace the LCD display if the screen breaks. Soldering and de-soldering will be necessary.



TOOLS:

- [Tweezers](#) (1)
 - [iFixit Opening Tools](#) (1)
 - [Phillips #00 Screwdriver](#) (1)
 - [Soldering Workstation](#) (1)
-


Step 1 — Back Panel



- Unscrew the two 4.0mm Phillips head screws found near the ports at the bottom of the device using a PH #00 screwdriver.

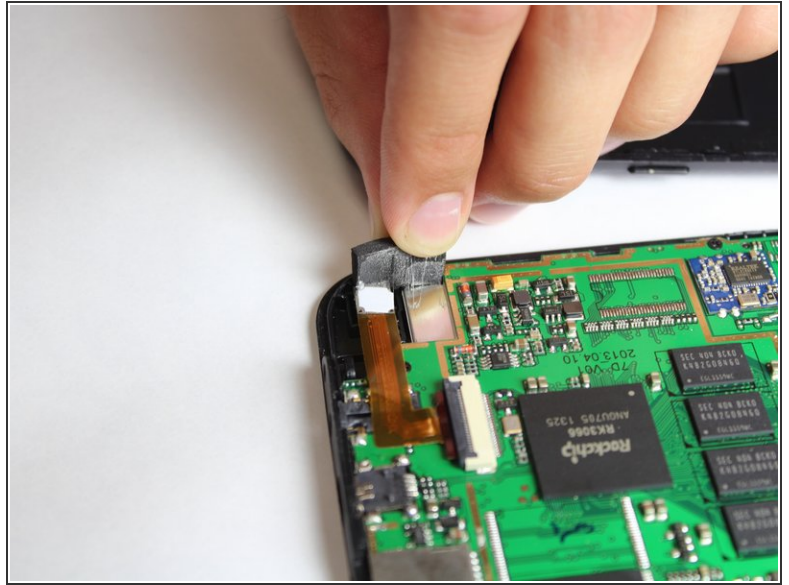
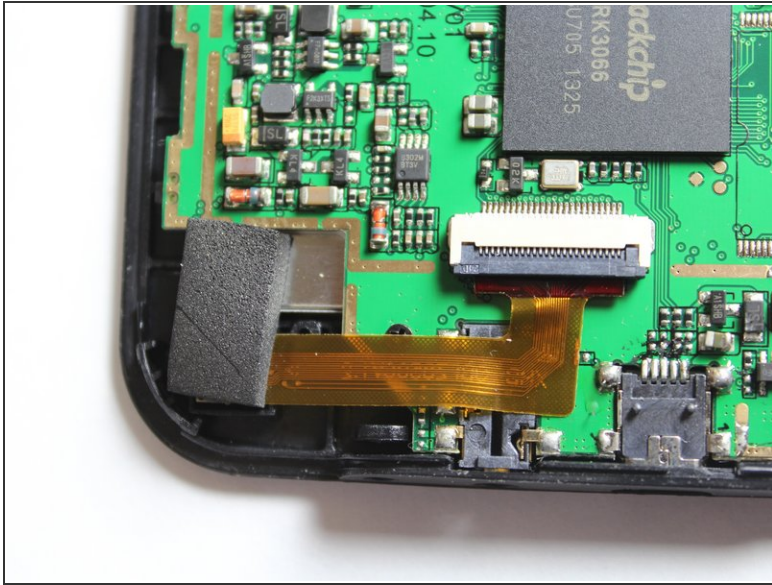
Step 2



 Be careful when taking the back panel off. The speaker is connected to both the front and back panels, and may get pulled out if you are not gentle when lifting the back panel away.

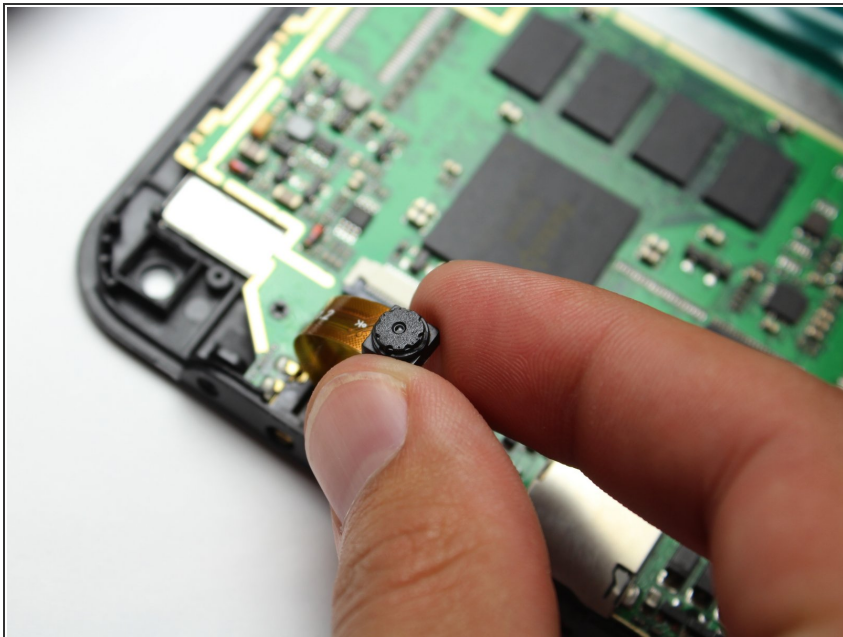
- Slide the plastic prying tool in between the front and back panel and pry them apart on all 4 sides.
 - It may be easiest to start on one of the sides, and work your way around the device. The bottom, with the ports, is the most difficult side and can be saved for last.
- ⓘ There are small latches that make this difficult. Moderate force may be required to separate the two panels.

Step 3 — Front-Facing Camera



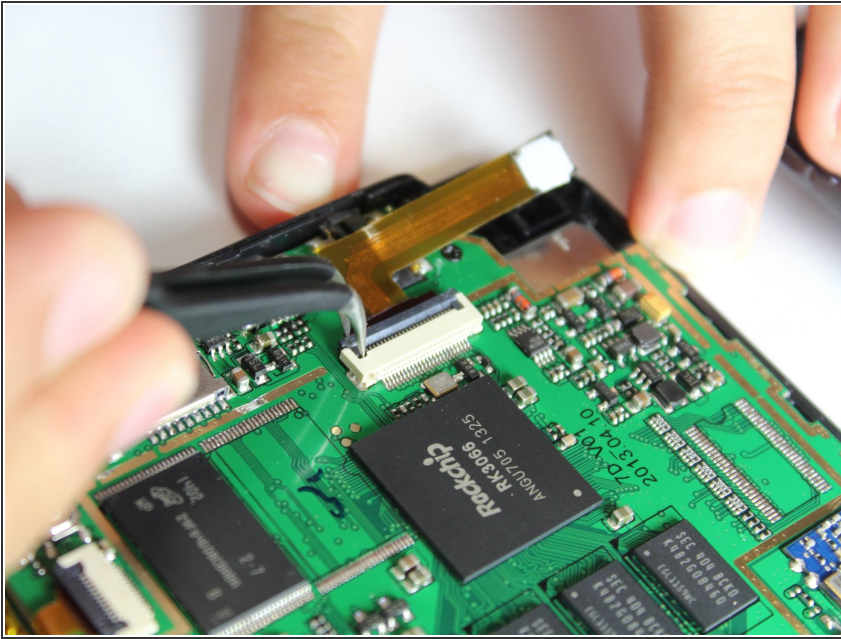
- Remove the black pad on the back of the camera by peeling it off.

Step 4



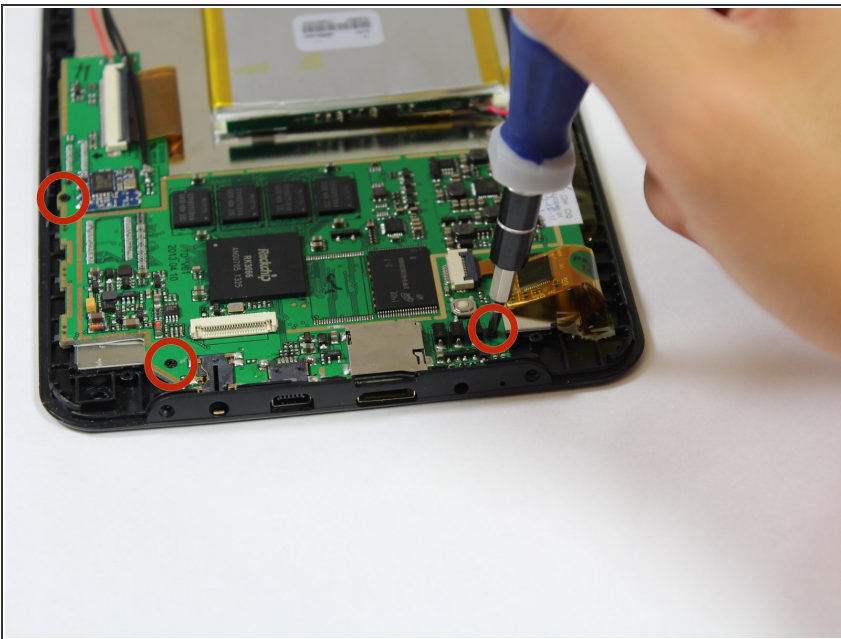
- With the bottom of the device facing away from you, pull the camera out of its black housing.
- ⓘ The camera will come right out when you lift with your fingers.

Step 5



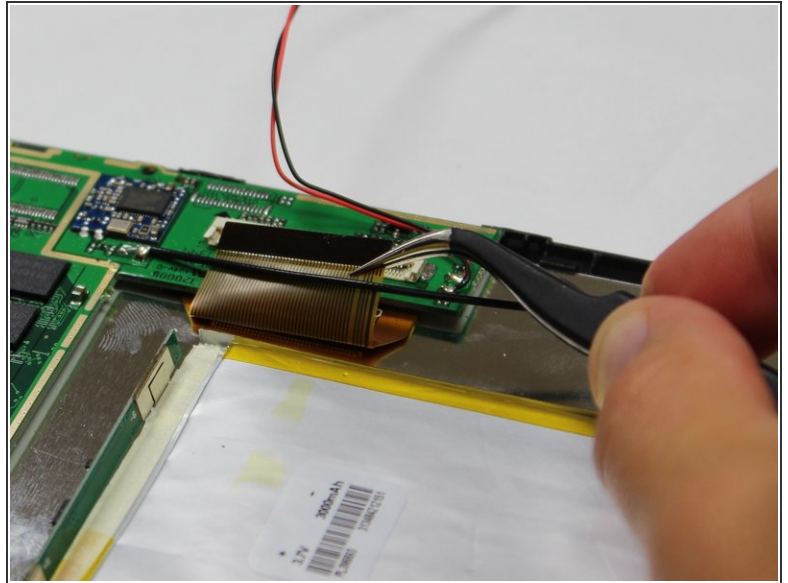
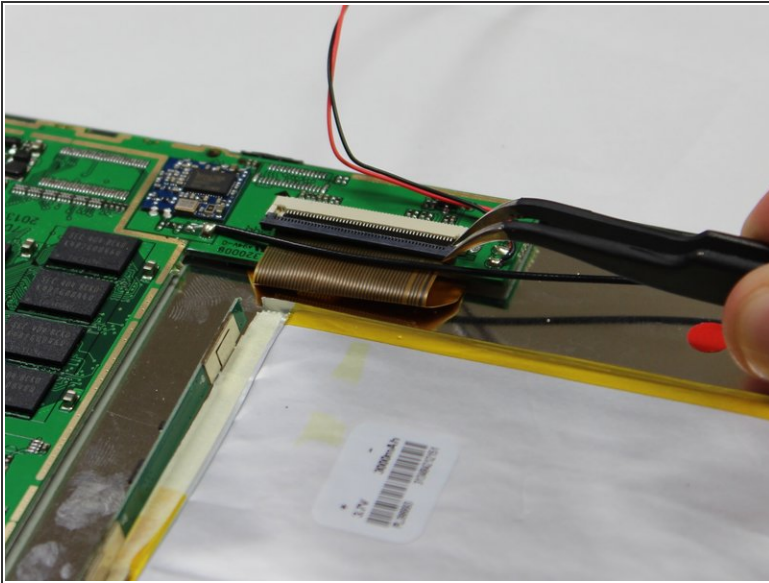
- Use the tweezers to lift the grey connector, connecting the camera ribbon to the circuit board, up from the beige housing. It should rotate up, and allow you to slide the ribbon out from under the connector.

Step 6 — Display



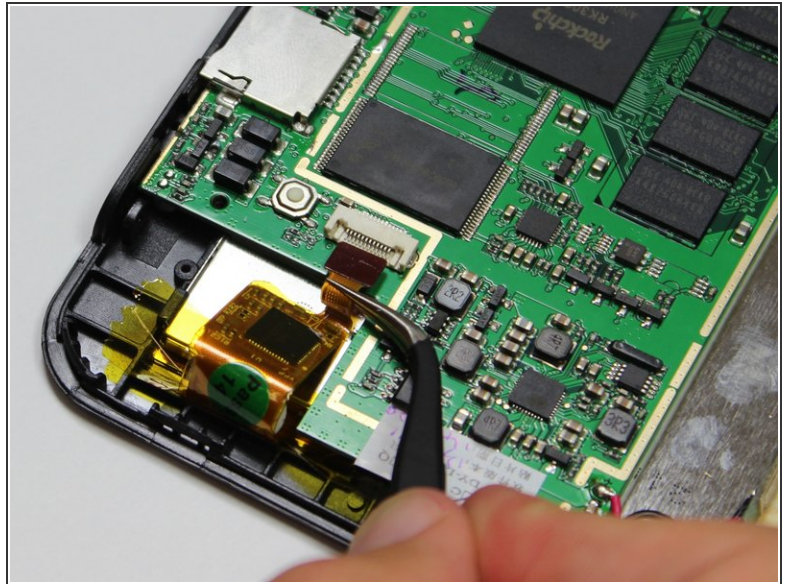
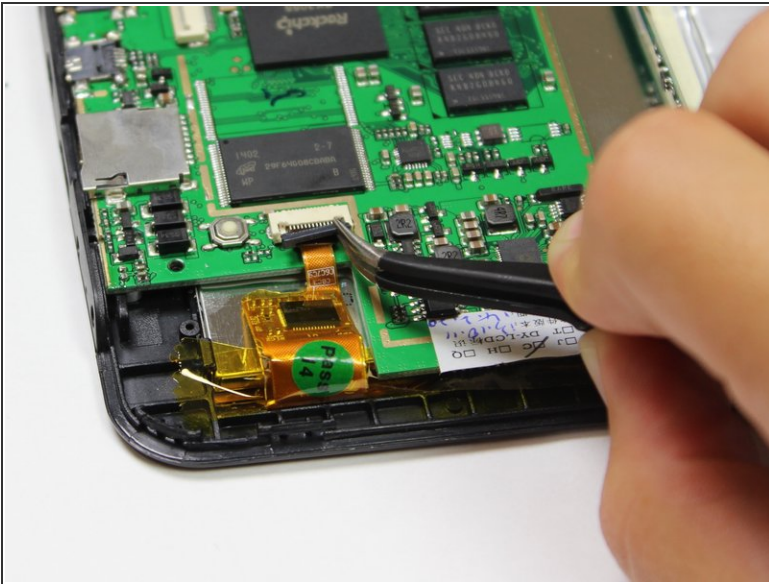
- Remove the three 4.0mm screws holding down the circuit board with the Phillips #00 screwdriver.

Step 7



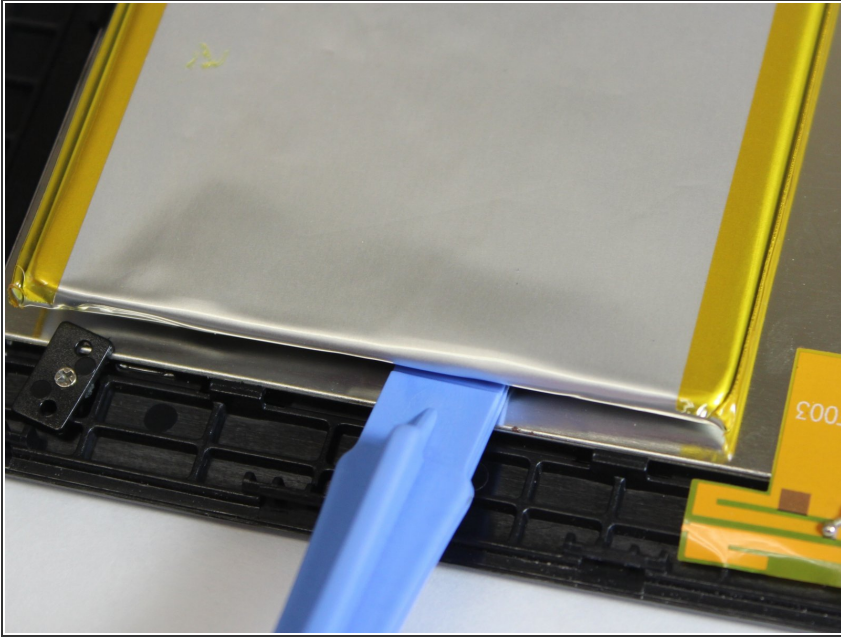
- Use the tweezers to lift the grey connector, located near the battery and speaker, up from the beige housing. It should rotate up, and allow you to slide the ribbon out from under the connector.

Step 8



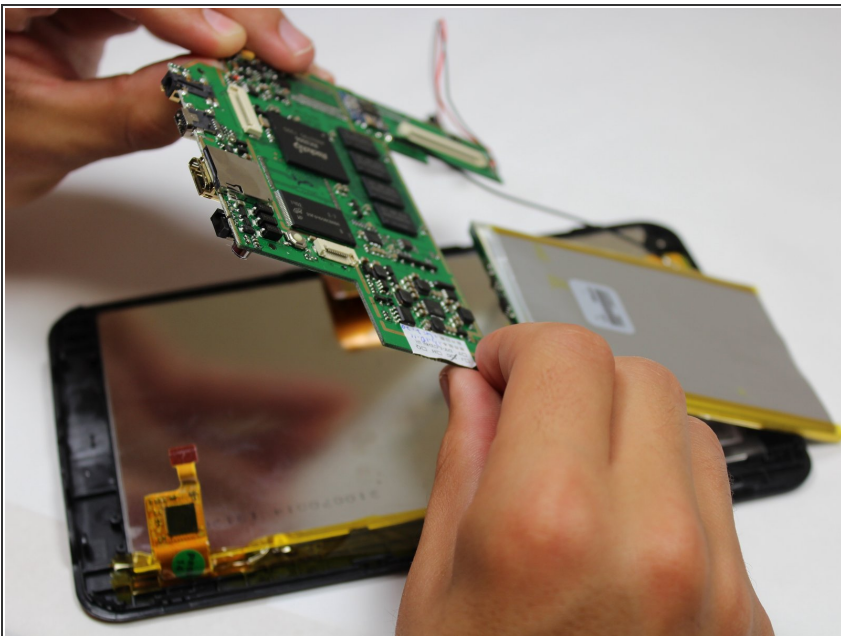
- Use the tweezers to lift the grey connector, located near the reset button, up from the beige housing. It should rotate up, and allow you to slide the ribbon out from under the connector.

Step 9



- Turn the device around, and use the large plastic opening tool to pry the battery off of the back of the silver LCD.
- ⓘ Do not worry if the battery bends while you are removing it. It is flexible, and you did not just break it.
- ⓘ Some of the glue holding the battery in place may stick to the back of the LCD.

Step 10



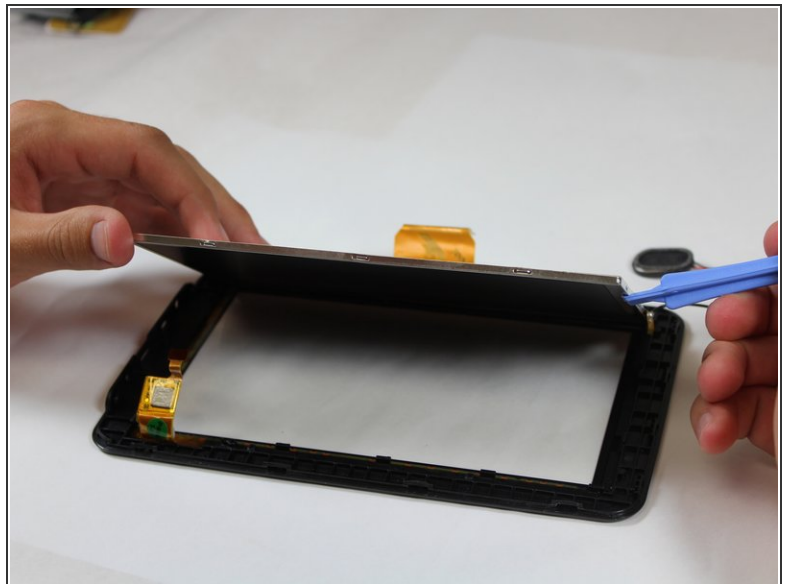
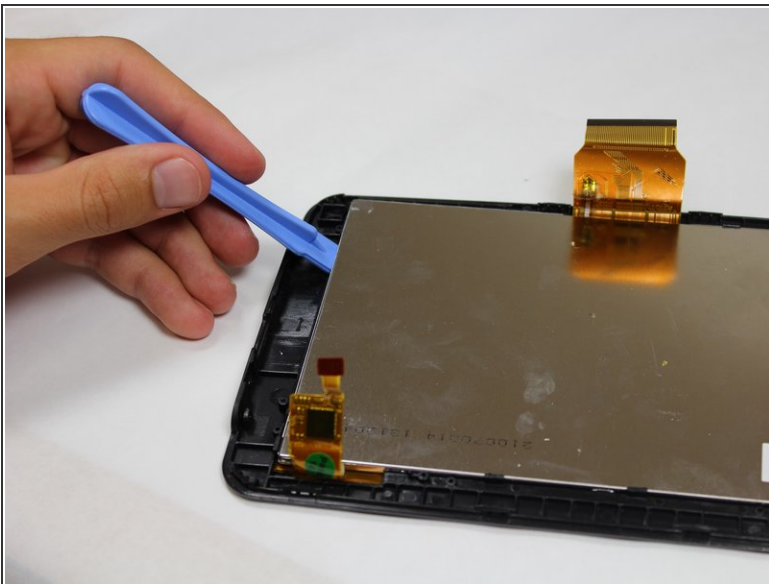
- Lift the circuit board and the battery off of the front panel.

Step 11



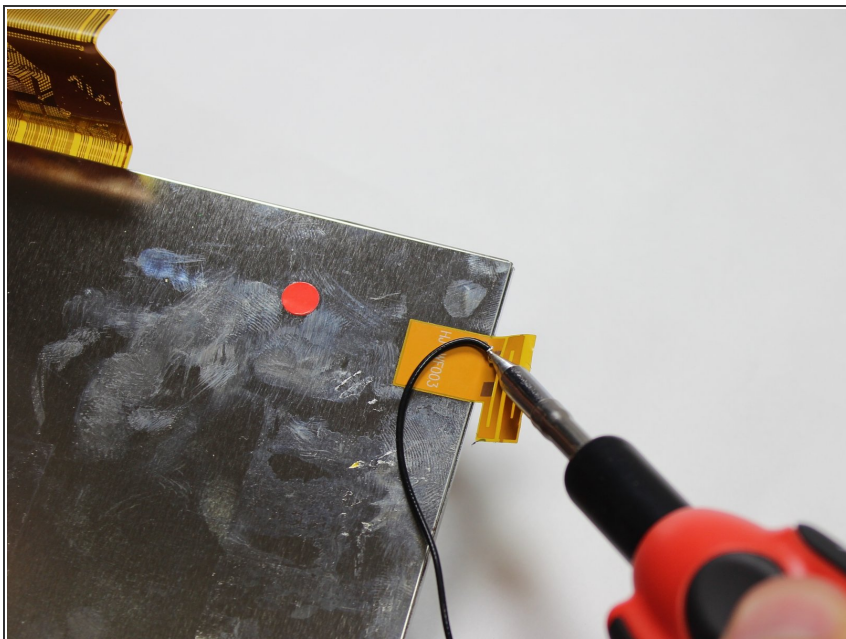
- Remove the two 3.0mm screws holding down the black tabs using the Phillips #00 screwdriver.
- ⓘ Each screw is holding a black tab down onto the silver LCD. When the screws are removed these black tabs will fall off.
- ☑ When putting the device back together, the screws go through the middle holes of the black tabs.

Step 12



- Use the Plastic Opening Tool to gently pry the black hooks away from the edges of the silver LCD. Then lift the LCD off of the front panel.
- ⓘ As the LCD is pried off of the front panel, some of the plastic hooks holding it to the front panel might catch on the edges of the LCD. Avoid this by gently bending the front panel outwards while removing the LCD.

Step 13



- ⚠ Soldering guns are hot and can easily damage you or the device.
- Desolder the black wire from the LCD.
 - For soldering information, see our guide: [How To Solder and Desolder Connections](#).

To reassemble your device, follow these instructions in reverse order.