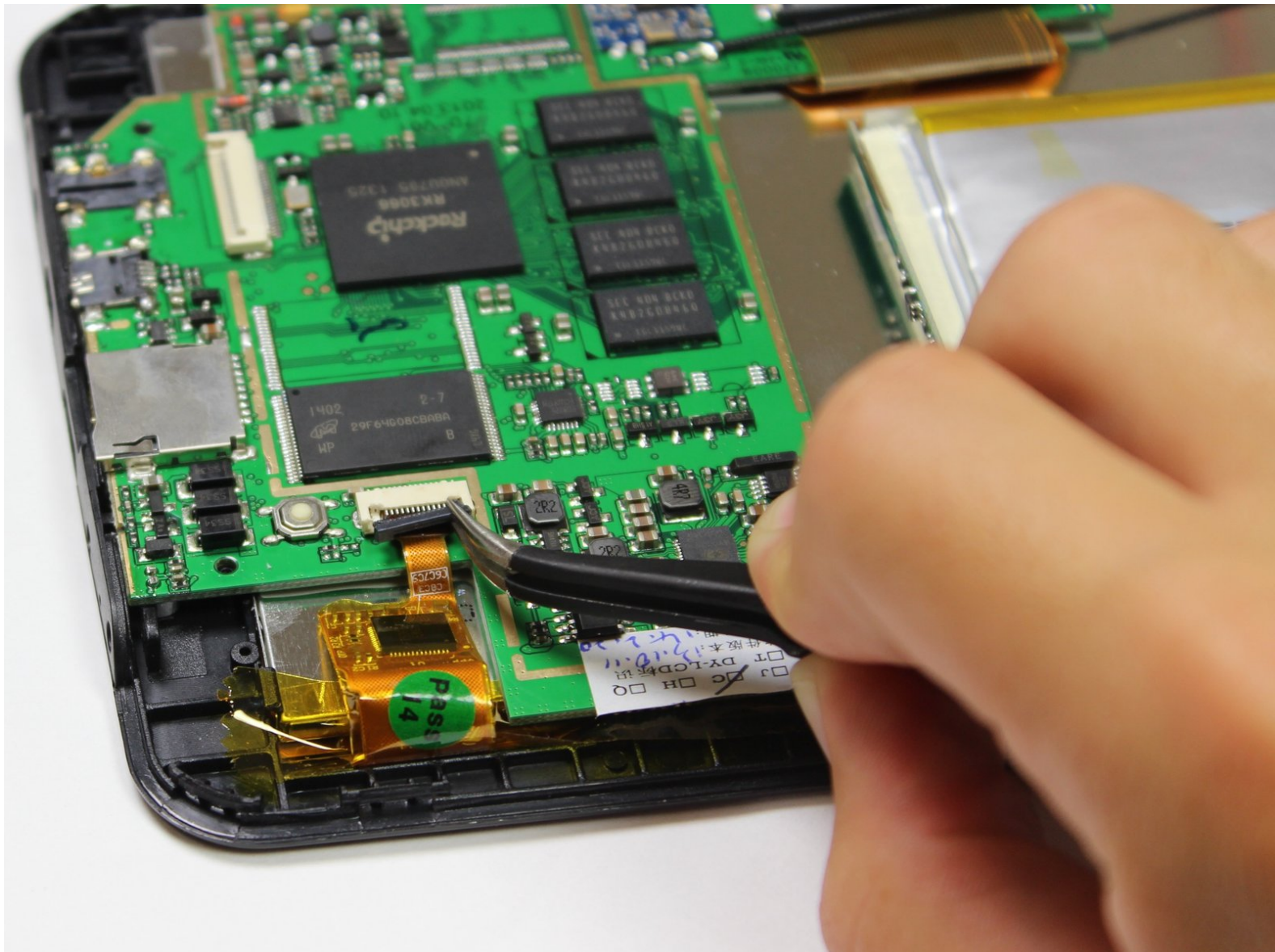




Visual Land Prestige Pro 7D Reset Button Replacement

Replace the reset button of the Visual Land Pro 7D to reset the device to the factory settings.

Written By: Jennifer Laybourn



INTRODUCTION

This repair is necessary if the reset button is broken, and you have forgotten your password or need to restore the device to factory settings. The repair involves soldering, but if you are proficient in soldering, it is very straight forward. If this will be your first time soldering, it is a good place to start!



TOOLS:

- [Phillips #00 Screwdriver](#) (1)
 - [iFixit Opening Tools](#) (1)
 - [Soldering Workstation](#) (1)
-


Step 1 — Back Panel




- Unscrew the two 4.0mm Phillips head screws found near the ports at the bottom of the device using a PH #00 screwdriver.

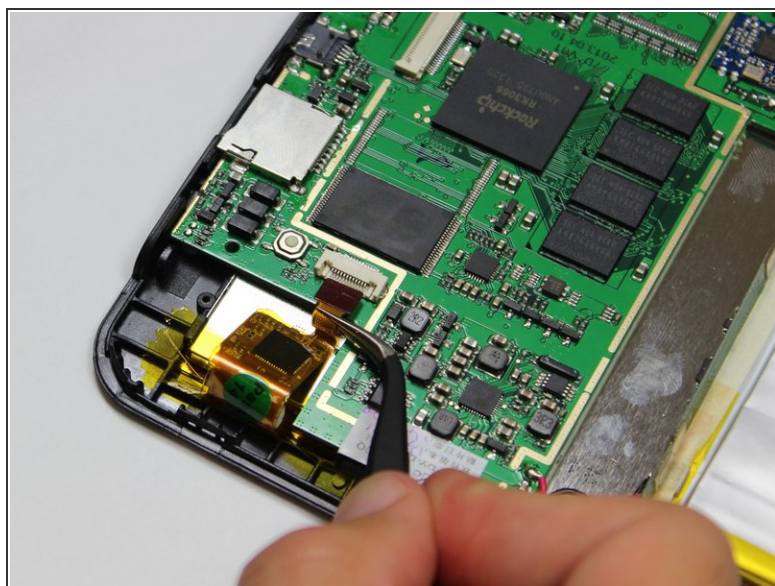
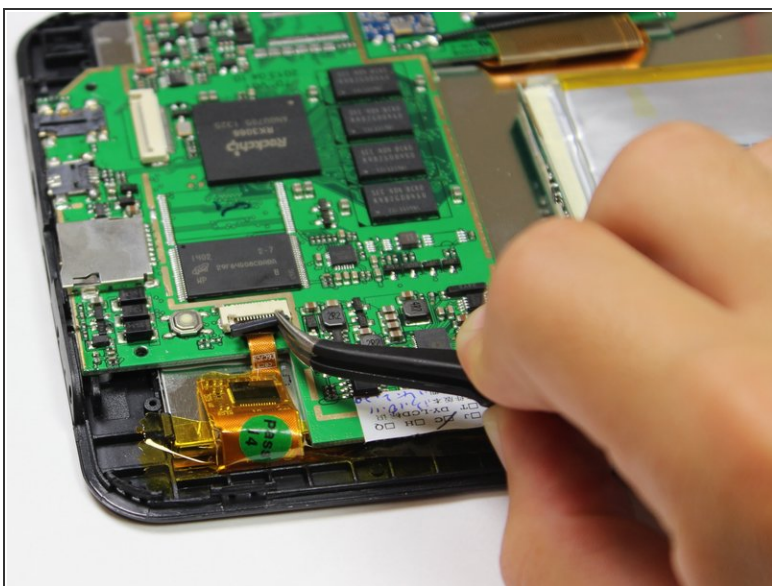
Step 2



 Be careful when taking the back panel off. The speaker is connected to both the front and back panels, and may get pulled out if you are not gentle when lifting the back panel away.

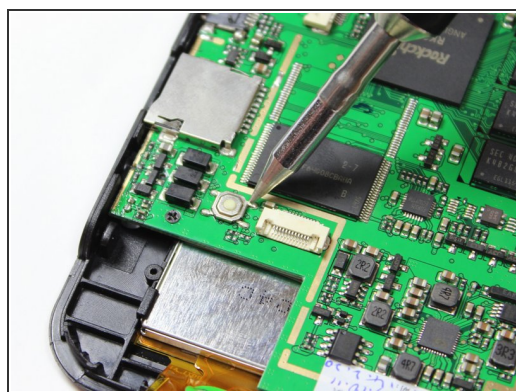
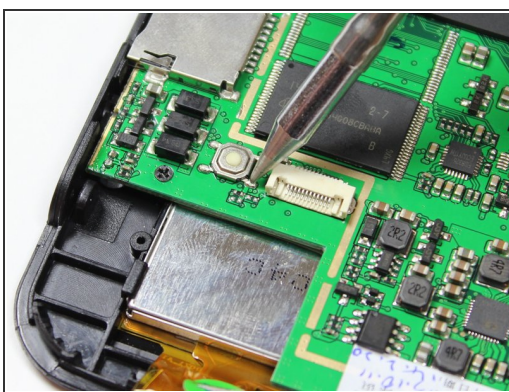
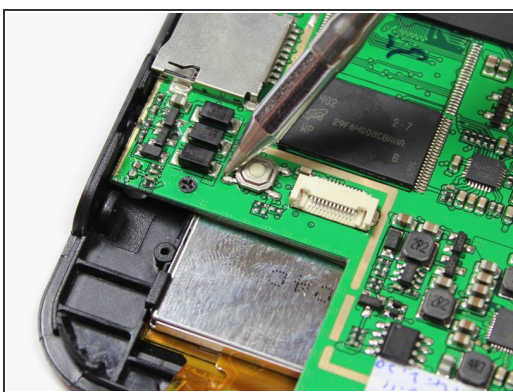
- Slide the plastic prying tool in between the front and back panel and pry them apart on all 4 sides.
 - It may be easiest to start on one of the sides, and work your way around the device. The bottom, with the ports, is the most difficult side and can be saved for last.
-  There are small latches that make this difficult. Moderate force may be required to separate the two panels.

Step 3 — Reset Button



- Use the tweezers to lift the grey connector, located next to the reset button, up from the beige housing. It should rotate up, and allow you to slide the ribbon out from under the connector.
- ⓘ Although not necessary for replacing the reset button, it is highly recommended to disconnect the ribbon. This ensures it will not get damaged during desoldering.

Step 4



⚠ Soldering guns are hot and can easily damage the device.

- Desolder the four side dots holding the reset button in place.
- ⓘ If this is your first time desoldering, here is a helpful guide to show you [How To Solder and Desolder Connections](#).

To reassemble your device, follow these instructions in reverse order.