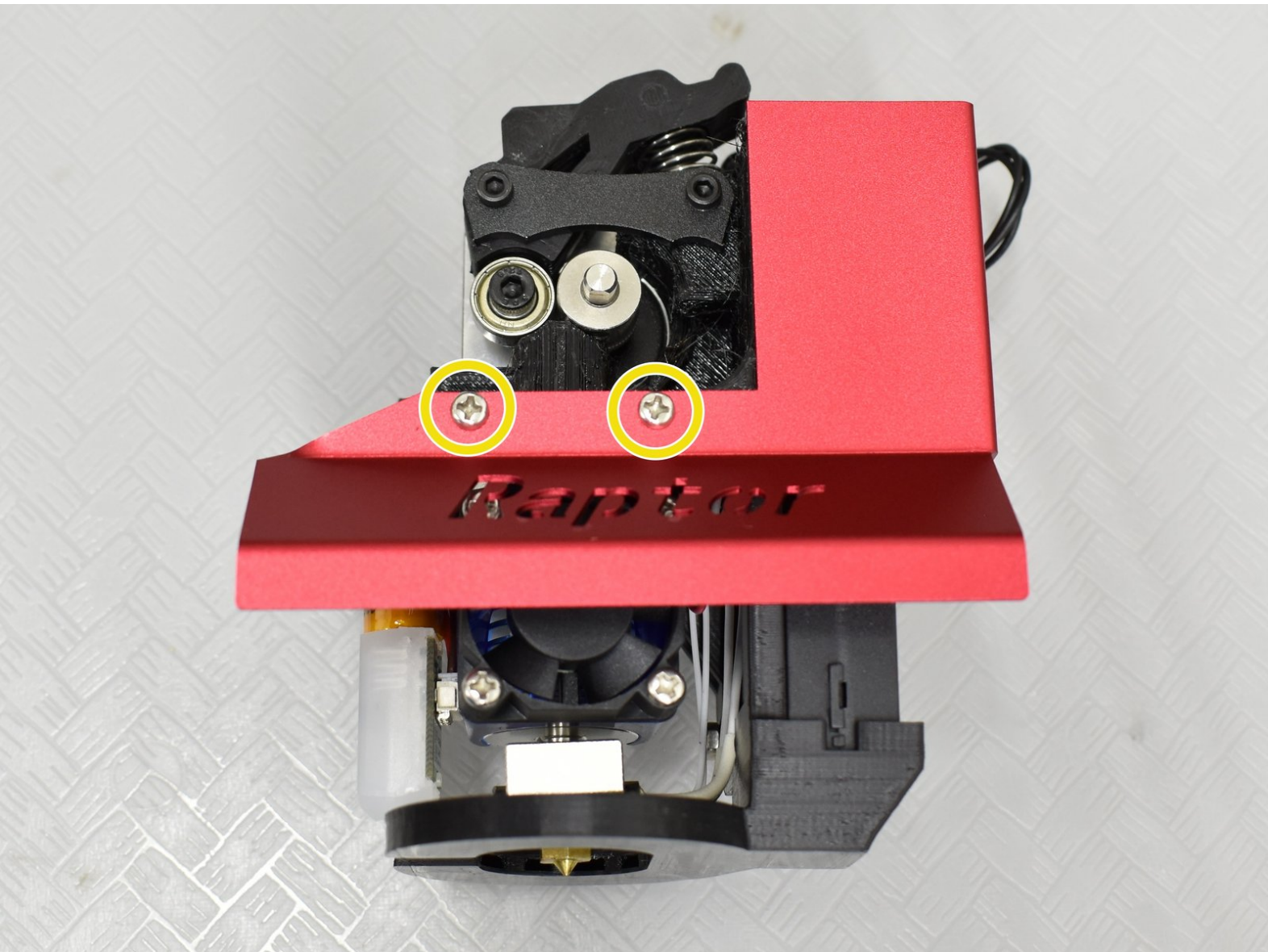




Vivedino Raptor 2 Hot End Removal

This guide outlines removing the hot end in your Vivedino Raptor 2 for repair or replacement.

Written By: Tiny Machines 3D

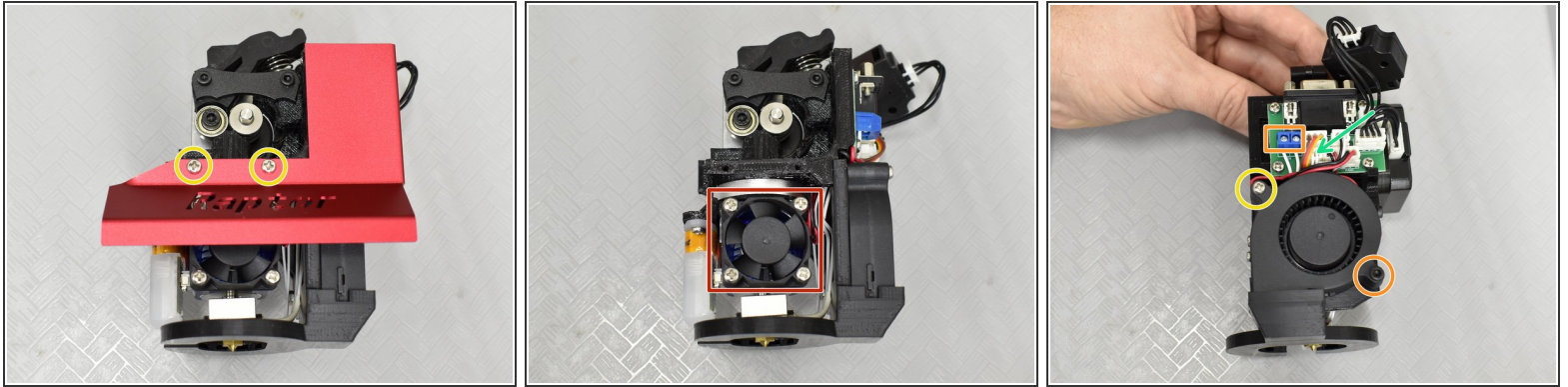






TOOLS:


- [2.5 mm Hex Key](#) (1)
 - [Phillips #1 Screwdriver](#) (1)
 - [1.5mm Flat Screwdriver](#) (1)
 - [Small Needle Nose Pliers](#) (1)
-





Step 1 — Teardown



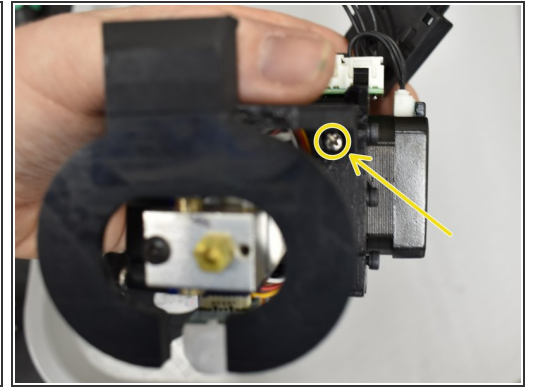
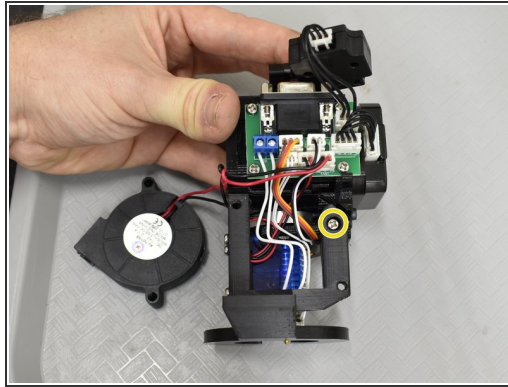
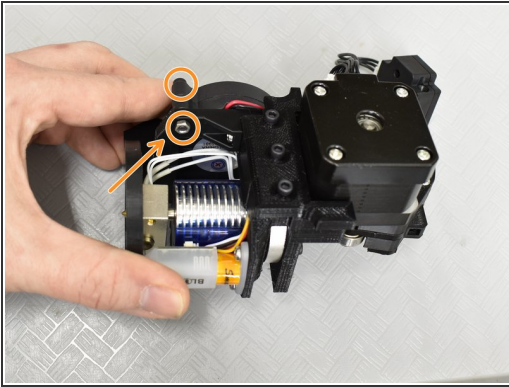
 Make sure all power cables to your 3D Printer are unplugged including wall plugs (A/C) and/or USB cables.

 Remove the Print Head Assembly and move to a well lighted clean area.

 Retain all parts and hardware for reassembly!

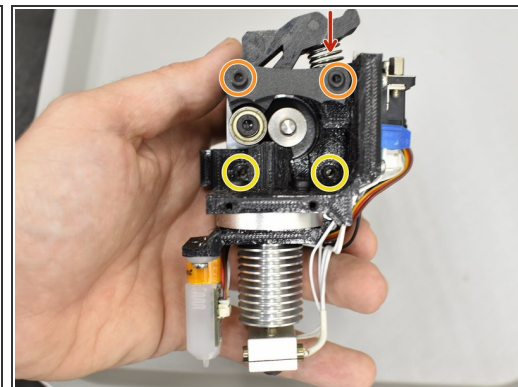
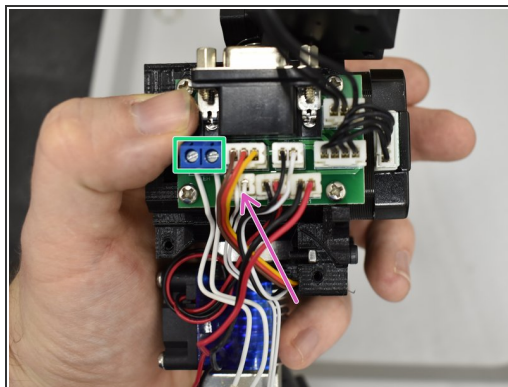
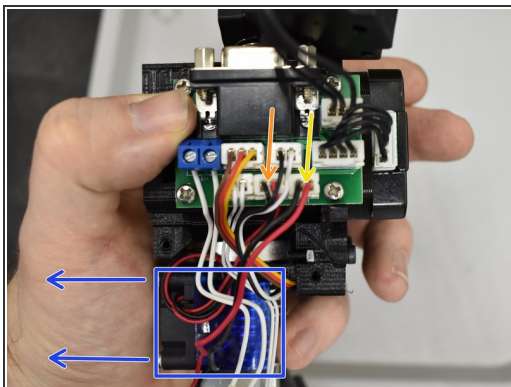
-  Use a #1 Phillips Screwdriver and remove the name plate.
-  DO NOT remove the hot end fan screws
-  Using a #1 Phillips and M2.5 hex, remove the screws securing the part cooler fan.
-  For the socket head screw, go to the next step.

Step 2 — Teardown



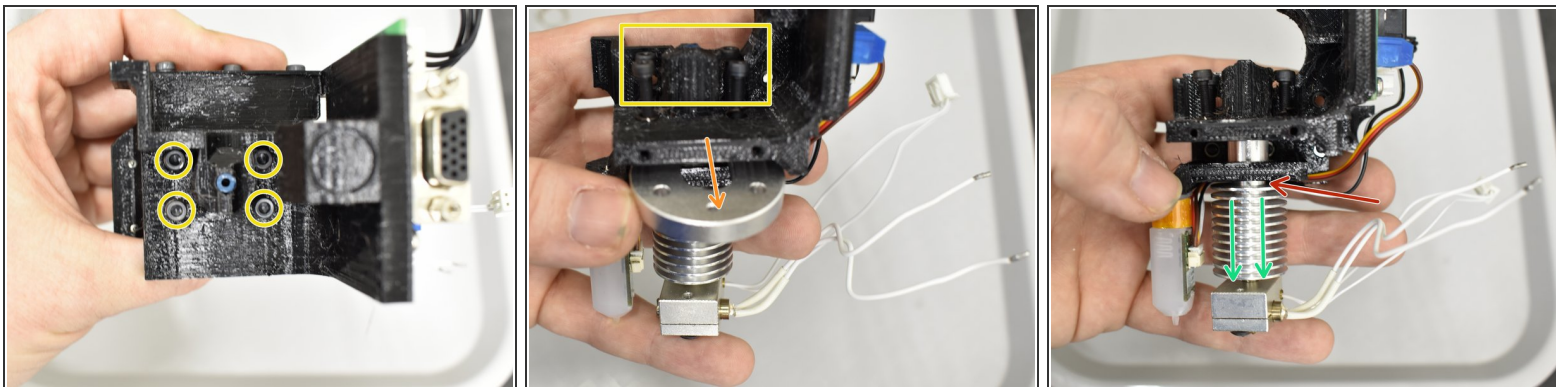
- Hold the nut with needle nose pliers and remove the socket head screw and nut.
- The final screw holding the part cooler duct on is accessed from underneath. Use a #1 phillips for this.

Step 3 — Teardown



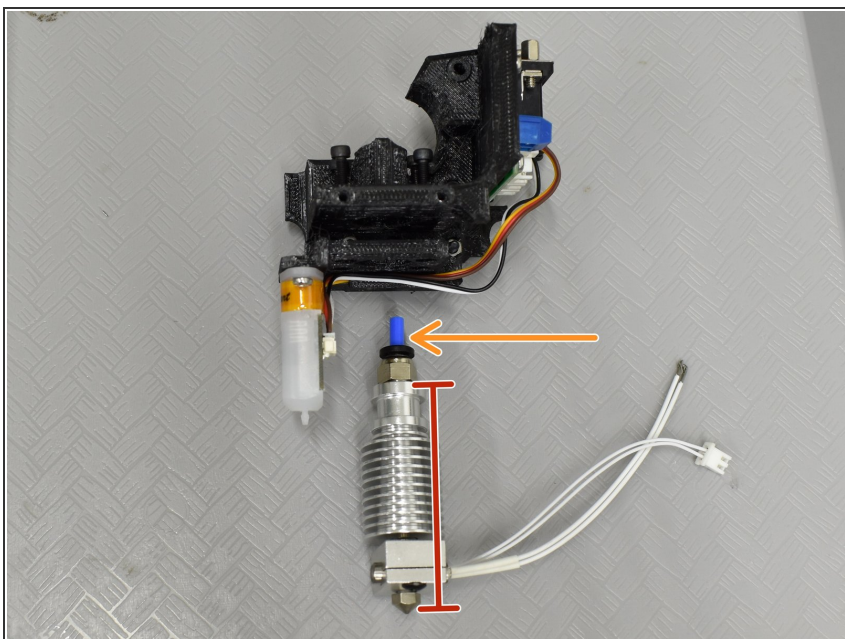
- Unplug the part cooler fan.
- Unplug the hot end fan.
- Remove the hot end fan and holder. Grab the fan with your thumb and index finger and pull it 180 degrees from the opening.
- Using a small flat tip screw driver, loosen the phoenix connector to release the heater wires.
- Unplug the thermistor connection.
- Remove the bottom 2 motor screws.
- Remove the 2 upper motor screws. They also hold the lever in place, which is under spring tension.
- Squeeze the lever down while removing or installing the upper 2 to help align the holes.

Step 4 — Teardown



- Loosen the 4 socket head cap screws with M2.5 hex until the horseshoe is loose.
- Remove the horseshoe.
- The hot end can now be removed by pulling it down and out of the printed body.
- If it is stubborn, you can gently pry between the top fin and printed mount with a flat screwdriver.

Step 5 — Measure and Rebuild



- Now is the time to repair or replace your hot end.
- ⓘ Important Reminder: If you change any components, note the length of a few things...
- The protrusion of ptfе tubing out the top.
- The length of the hot end. Any change here will affect Probe Z Offset and may cause issues if too long or too short.

To reassemble your device, follow these instructions in reverse order.

