



Volume Control Potentiometer Cleaning

THIS IS A TEMPORARY FIX. Is your Pioneer VSX-918V receiver have control problems? This guide will show you how to fix the problem without purchasing parts.

Written By: Nick



INTRODUCTION

Read me: Before attempting this repair, read the provided guide notes (and warnings) for critical information.

If your Pioneer VSX-918V Series receiver has developed control problems and would like to try and fix the problem without a new board, it may be possible to fix the problem without new parts. This guide will show you how to disassemble the receiver and use contact cleaner to clean the potentiometer as a cheap fix.

Guide warnings

- You will be working with high voltage equipment. I am not responsible for any attained injuries (or your stupidity).
- Use common sense when following this guide. **If you are questioning your ability to complete this repair, let a professional handle it.**
 - **Professionals: This is not a long term fix.** This is a fix a home user can attempt where the stakes are low and the worst that happens is the problem is not fixed or the board is required. These boards should be replaced if you are doing a professional repair.

Guide notes

- **There is NO GUARANTEE this will work. The repair lifetime is also not guaranteed.**
- While this fix may repair some units for life, abused units may not come back or fail again. If the potentiometer was damaged by the previous owner, it's best to order a board (or parts) and repair it with new components. While not covered in this guide, removing the front control PCB grants access to the connector(s).
- **This WILL NOT work 100% of the time. If this does not work, the board is damaged and needs to be repaired or replaced.**

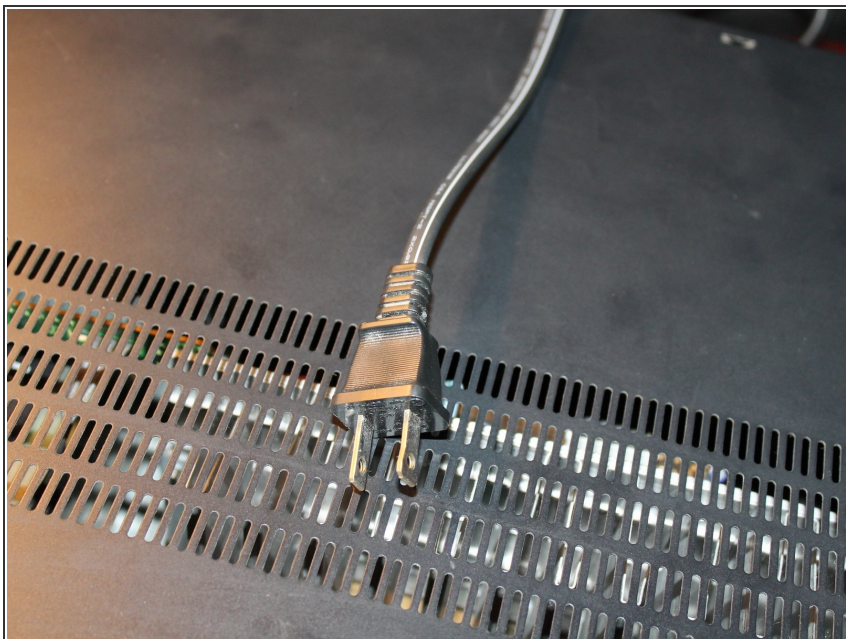
TOOLS:

- [Flathead Screwdriver](#) (1)
Note: Phillips bit used for disassembly.
- [Magnetic Project Mat](#) (1)
Used to sort screws. Optional.

PARTS:

- [DeoxIT](#) (1)
Recommended replacement for RadioShack control contact cleaner.
- [RadioShack Control Contact Cleaner](#) (1)
CAUTION: May not be available much longer.

Step 1 — Unplug the receiver



⚠ *In order to ensure there is no residual power, unplug the receiver for 48-72 hours.* This will kill off most of it and make service safer.

- Before working on the unit, disconnect the unit from the wall. Hold the power button in for 60 seconds to drain the capacitors.

Step 2 — Remove the bottom faceplate screws



- If present, remove this screw. ***This was not in my unit, but may be in yours.***
- Remove the two screws holding the faceplate on the receiver. Sort these individually as they are different.

Step 3 — Remove the side panel screws



- Remove the 2 screws from the left side of the receiver. They are both the same length.
- Remove the 1 screw on the right side of the receiver. While it appears to be the same, sort it separately.

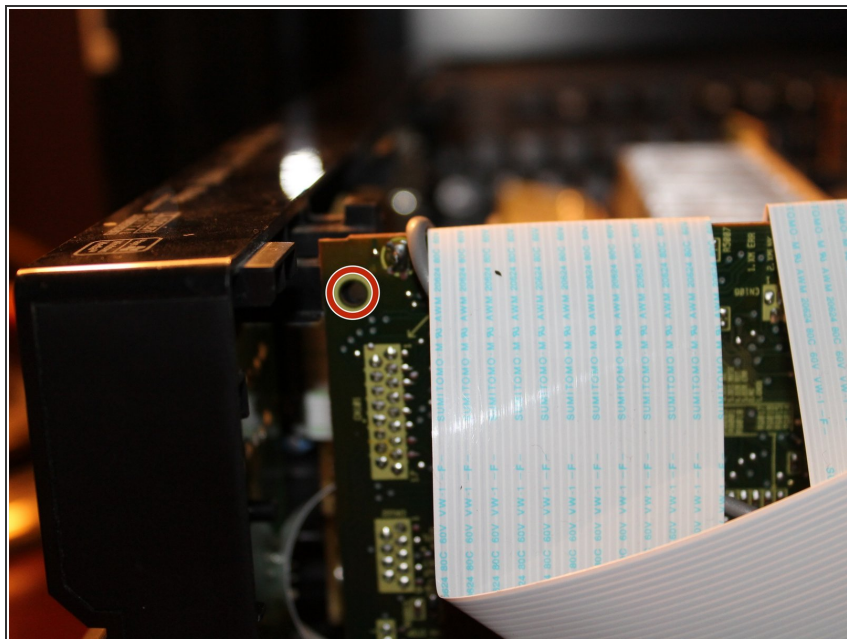
Step 4 — Remove the back screws



⚠ Exercise extreme caution with the receiver at this point! You will not be protected from shocks if you touch a charged component!

- Remove the 3 screws from the back of the receiver. Once these are removed, the cover will come off.

Step 5 — Remove the retention pin on the faceplate



⚠ If the clip in the faceplate is missing, it has been previously serviced. ***It is not essential, but try to keep it intact as the bezel will always be loose without it.***

- This pin is installed by the factory. To remove this pin, push it out from the back until it is loose. Remove the pin when it is loose.

Step 6 — Remove the faceplate screws



- After the clip from the faceplate is removed, remove the 2 screws that hold it to the chassis. Both screws are the same length.

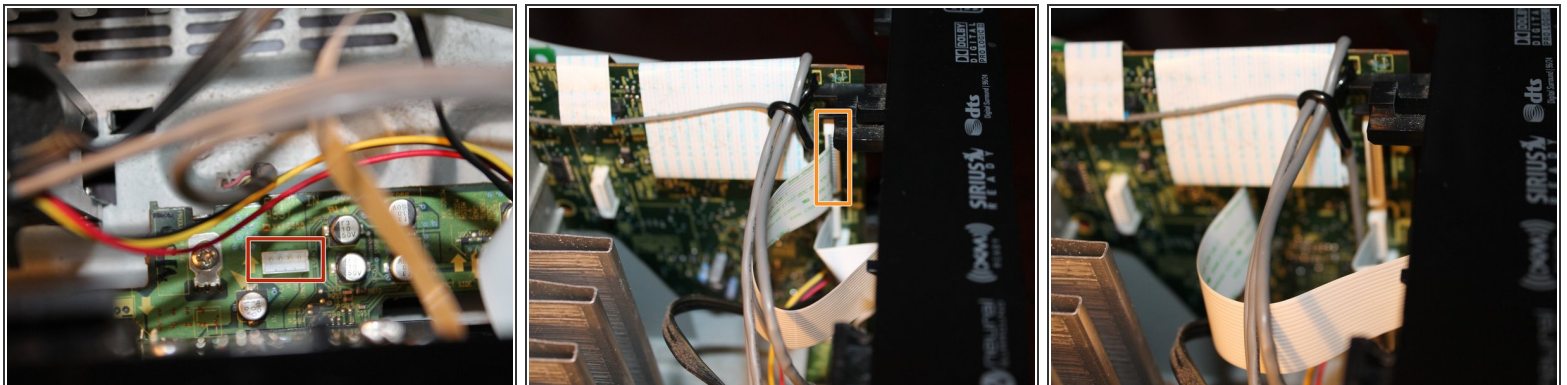
Step 7 — Remove the knob from the receiver



i First time removal can be tricky. Take your time on a unserviced receiver.

- Remove the control knob from the receiver. To do this, pull the knob off firmly. ***Too much pressure may result in a broken knob and potentiometer.***

Step 8 — Disconnect the front panel flex cables



! ***Special attention to the front panel is required on iPod Direct models.***

- ***iPod Direct*** For iPod Direct models, disconnect the wire that plugs into the board as shown in the 1st picture. The board will need to be removed soon.
- Disconnect the flatflex that connects the front panel display to the rest of the receiver.

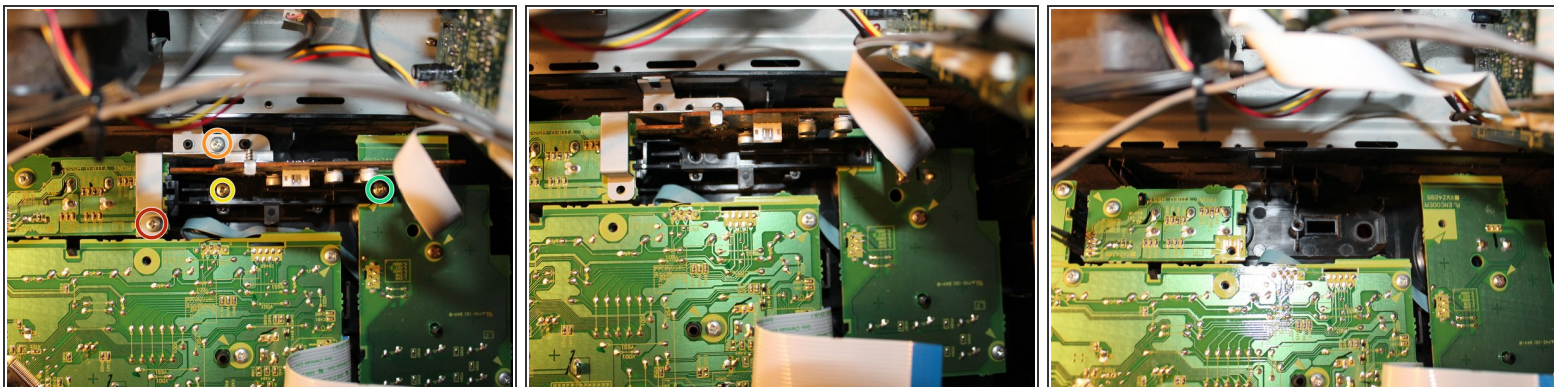
Step 9 — Unclip the faceplate



⚠ *Once the unit is reassembled, these zipties must be replaced. Failure to do this will result in protection mode errors.*

- Cut the zipties that hold the front panel wires on the fan. This will provide better component access.
- With the faceplate loose and all of the cables disconnected, unclip the faceplate one side at a time. Lay the faceplate flat on your workspace. ***Leave enough room to access the boards on the front panel.***

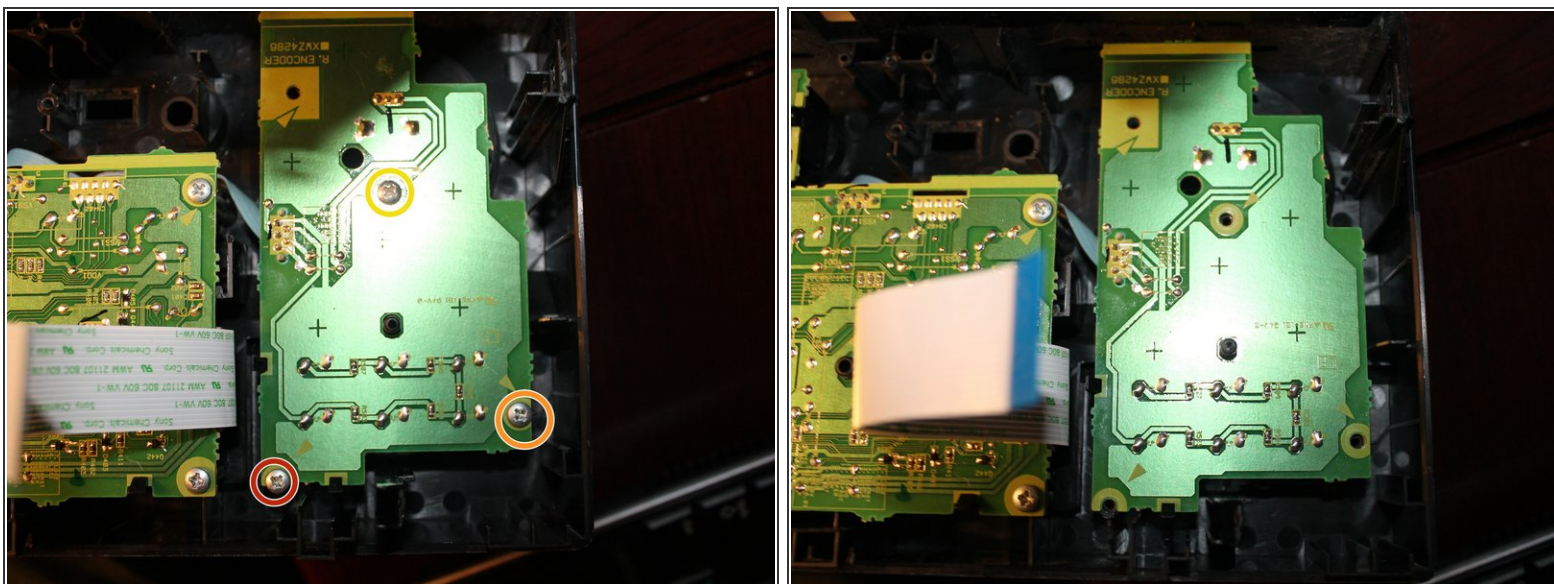
Step 10 — Remove the iPod Direct board



⚠ This procedure will be different for non iPod Direct receivers.

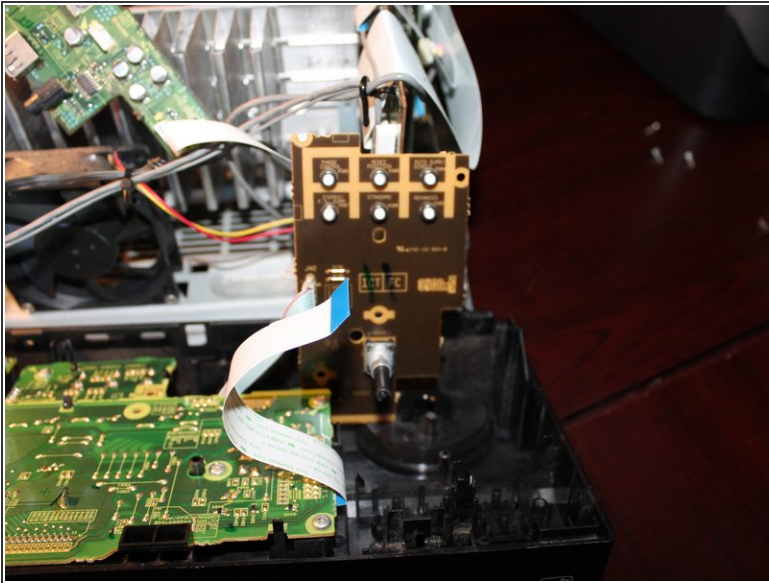
- **iPod Direct:** Remove all 4 marked screws. Remove the support bracket and PCB.
- **Non iPod Direct:** Remove the **Green** and **Red** screws. **No additional screws need to be removed.**

Step 11 — Remove the faulty control board



- **WARNING:** This screw is unique and only fits here. Sort it separately.
- Remove the 3 screws that hold the volume control board in the receiver's front faceplate.

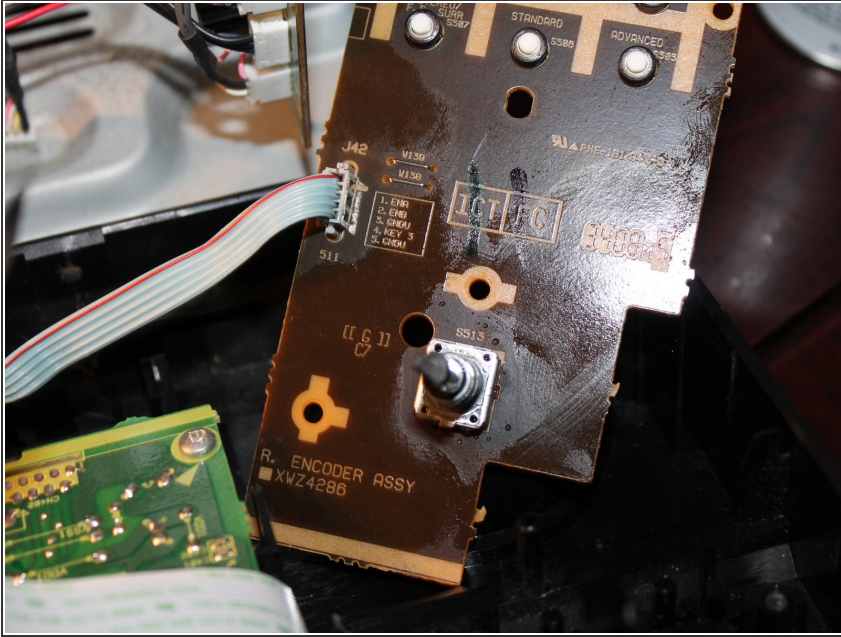
Step 12 — Spray contact cleaner into the potentiometer



⚠ A little contact cleaner goes a long way. If you need to use more than 1-2 sprays, the board may be beyond repair.

- With the control board loose from the front panel, spray contact cleaner into the potentiometer. Clean up any excess contact cleaner once you are done.

Step 13 — Wipe away any excess contact cleaner



- ✦ This fix may not be permanent and the problem may come back. Replace the board or potentiometer if this happens. **Let the switch dry for 1 hour before reassembly.**
- ⓘ If you do not have zipties available, tuck the wires in the fan so that they cannot easily move. This can be done as a short term solution comfortably.
- Wipe off any excess contact cleaner on the PCB. Reinstall the board once the contact cleaner is dry.

To reassemble your device, follow these instructions in reverse order.