



Vtech Emil the Panda

Emil is a talking baby-laptop which works with cards, that have holes which trigger the programs. When the spring sensors are oxidized, the cards can't work and the programs don't start. So you must deoxidize the contacts at the springs.

Written By: Schwarzstein



INTRODUCTION

When Emil won't work well, deoxidize the springs.

Emil is a talking baby-laptop which works with cards, that have holes which trigger the programs.

When the spring sensors are oxidized, the cards can't work and the programs don't start.

So you must deoxidize the contacts at the springs.



TOOLS:

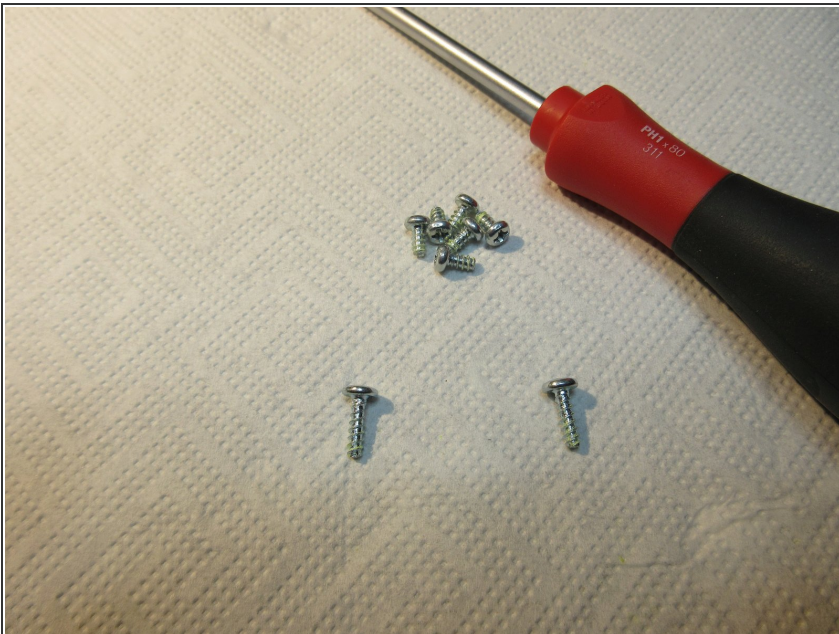
- [Phillips #1 Screwdriver](#) (1)
-

Step 1 — Vtech Emil the Panda



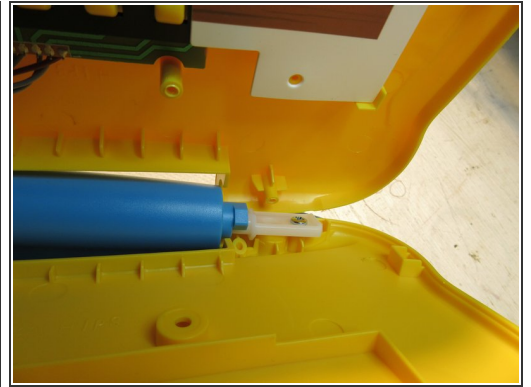
- First you must detach thes round yellow plugs which cover the screws.
- There are 6 short screws around the "display"
- ...and two longer screws under that "display"

Step 2



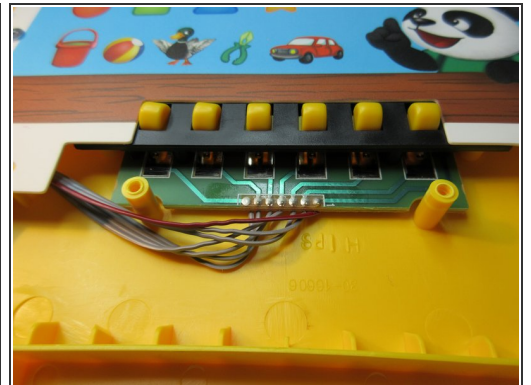
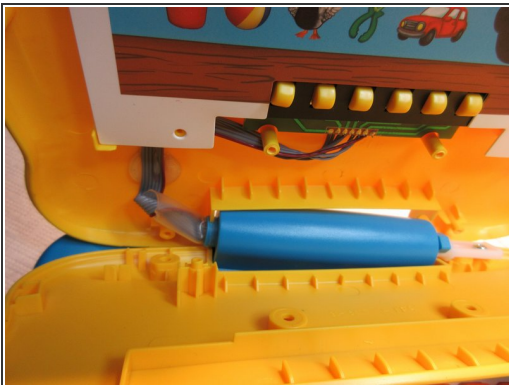
- Here a view of these screws

Step 3



- Now just pull it to open.
- Down there is a spring and a plastic part, look at the pictures

Step 4



- There you have these contact springs.

Step 5



- The springs are deoxidized with a electronics-cleaner-spray.
- After reassembling, Emil nnow knows every card and can talk and sing.
- Done. :)

To reassemble your device, follow these instructions in reverse order.