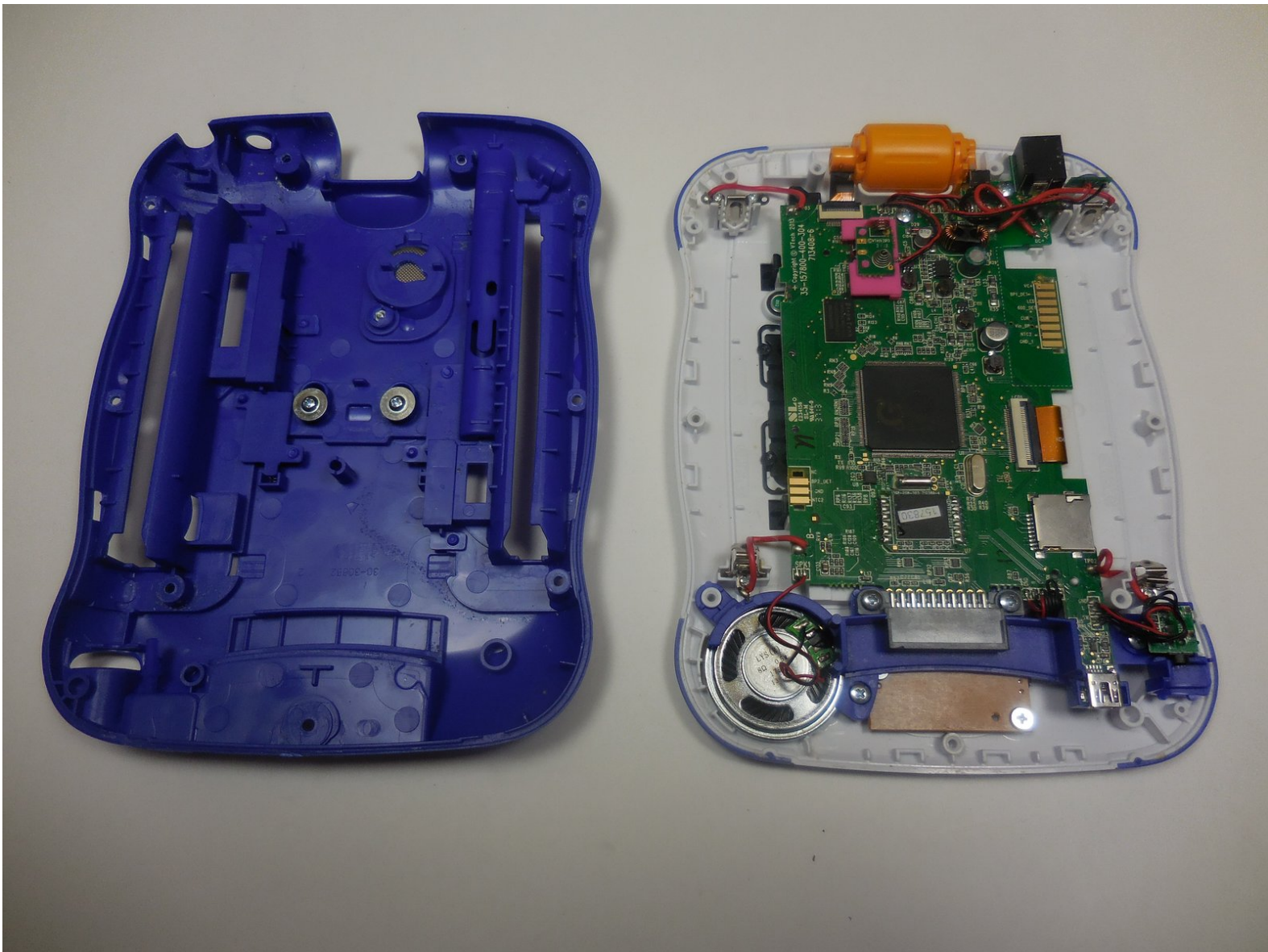




Vtech InnoTab 3 Rear Panel Disassembly

Instructions on how to open up the device and gain access to the motherboard for the Vtech InnoTab 3.

Written By: Brooke Livingston



INTRODUCTION

In order to make repairs to the Vtech InnoTab 3 it is necessary to know how to safely dissamble the device. This guide is relatively easy and allows you to access the guts of the device. Before you begin, make sure you have a PH00 screwdriver and a metal spudger



TOOLS:

- [Phillips #00 Screwdriver](#) (1)
 - [Metal Spudger](#) (1)
 - [Spudger](#) (1)
-

Step 1 — Rear Panel



- Slide the battery compartment door lock down.
 - While still holding the battery compartment lock down, slide the two battery doors outwards on either side of the device.
 - Carefully remove the batteries from the battery compartment.
- i** The standard option for the InnoTab 3 is four AA batteries. Vtech also offers a rechargeable battery online, but both battery options are removed from the device the same way.

Step 2



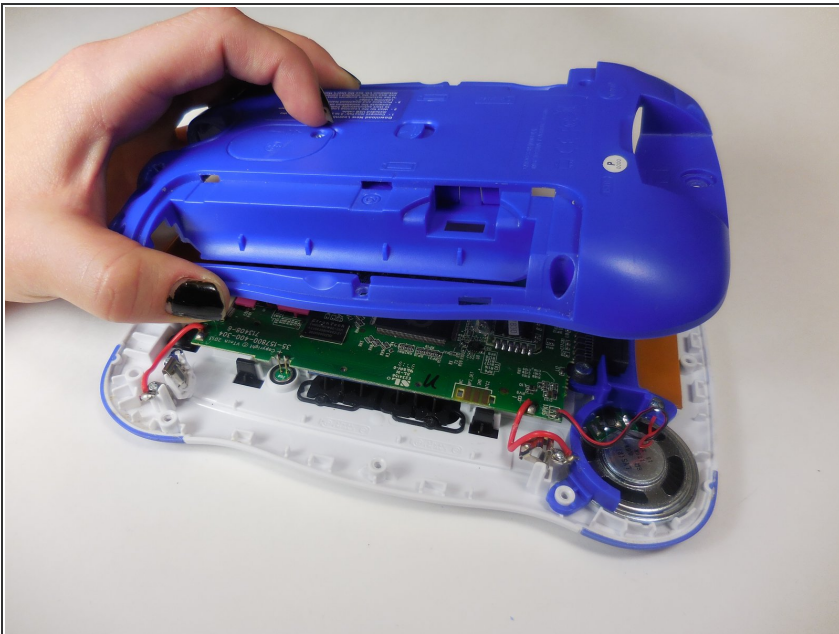
- Remove the six 7.6mm screws found in the battery compartment using a PH00 screwdriver.

Step 3



- ❗ There are three hidden screws on the back of the device, two at the top and one near the bottom.
- Using a nylon or metal spudger, remove the three caps that hide the screws.
- Remove the 5mm screw near the bottom and the two 7.6mm at the top using a PH00 screwdriver.

Step 4



- Carefully separate the back panel from the front panel revealing the motherboard connected to the front panel.

To reassemble your device, follow these instructions in reverse order.