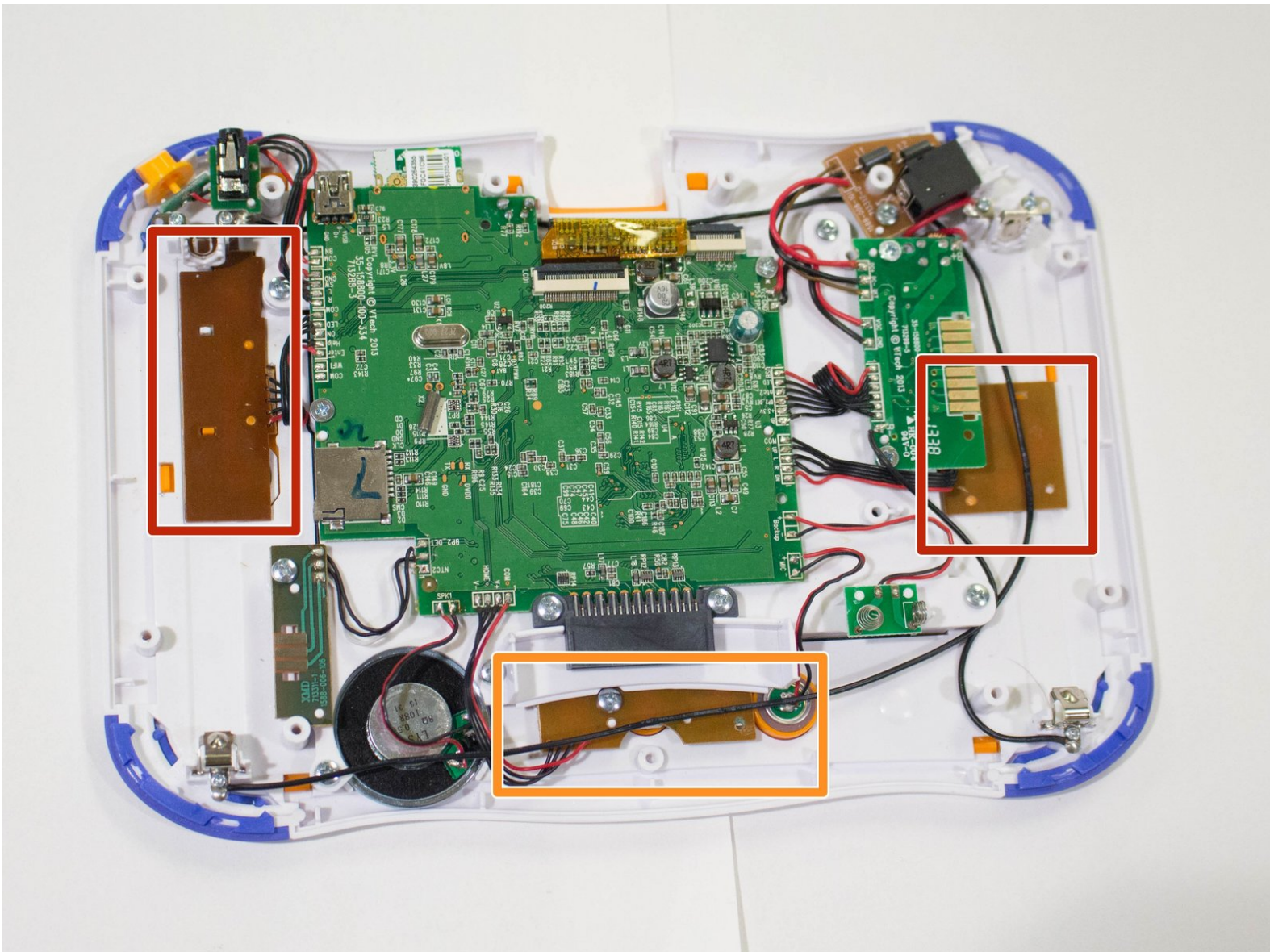




# Vtech InnoTab 3S Buttons Replacement

This guide contains information on how to properly replace the buttons in the Vtech InnoTab 3S.

Written By: Karina Garcia



# INTRODUCTION

Are the buttons no longer working on your tablet? This guide will walk you through replacing the buttons on the Vtech InnoTab 3S.

---

## TOOLS:

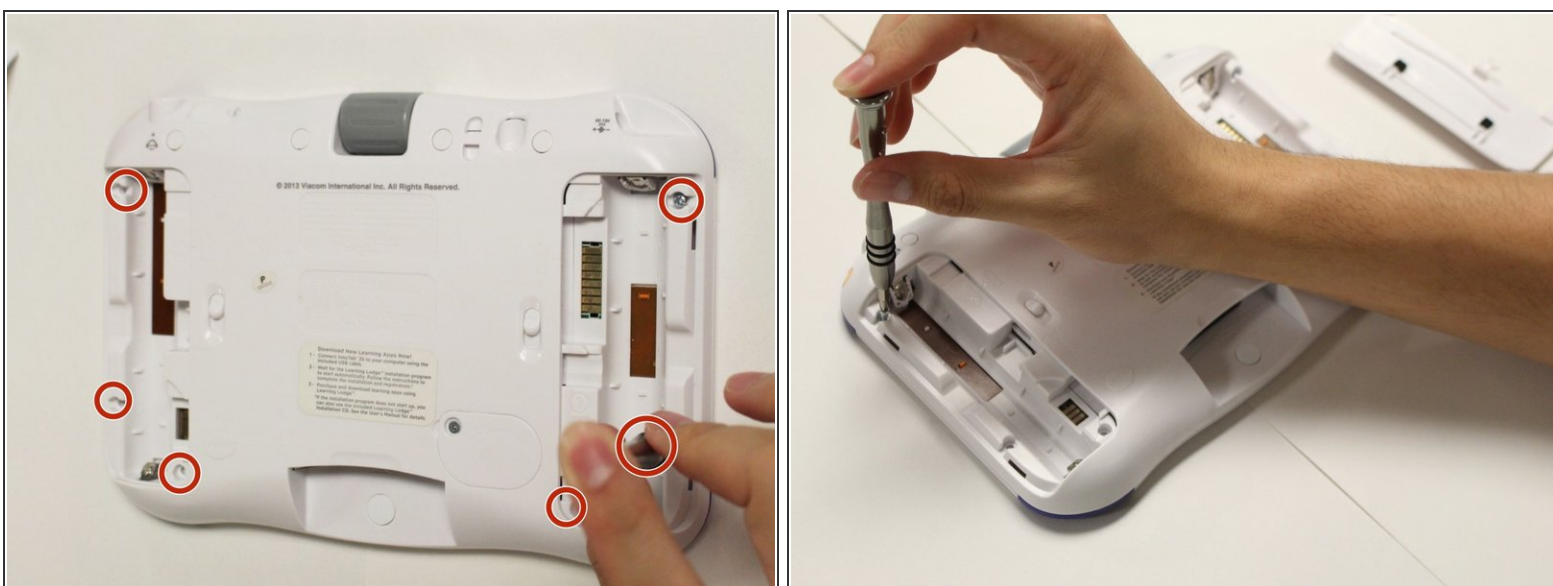
- [Metal Spudger](#) (1)
  - [Phillips #1 Screwdriver](#) (1)
  - [Phillips #00 Screwdriver](#) (1)
  - [Tweezers](#) (1)
-

## Step 1 — Rear Panel



- i** The battery compartment locks are located at the right and left of the battery compartments on the back of the device.
- While holding the battery compartment locks down, slide the two battery doors outwards from the sides of the device.
  - Carefully remove the batteries from the battery compartment.
- i** The standard battery options for the InnoTab 3S is four AA batteries. Vtech also offers a rechargeable battery online. Both battery options are removed from the device in the same way.

## Step 2



- Remove six 7 mm Phillips #1 screws from the interior of the battery compartment.

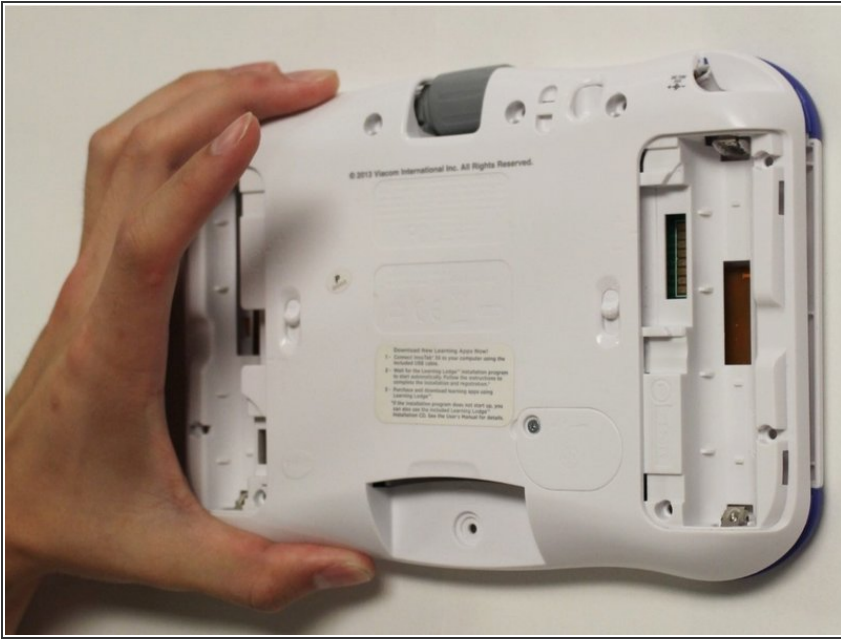
## Step 3



- ❗ There are 5 hidden 7mm screws on the back of the device. Four at the top of the device and one at the bottom. All are covered by a white cap.
- Using a nylon or metal spudger, remove the five caps that hide the screws.
- ⚠ Be careful not to scrape the plastic from the device using the spudger.
- ❗ When removing the caps, hold the spudger vertically compared to the orientation of the board to make removal easier. Also try to push in with your spudger pointing towards the bottom of the device.
- Remove the five 5mm Phillips #1 screws from the rear panel of the device.

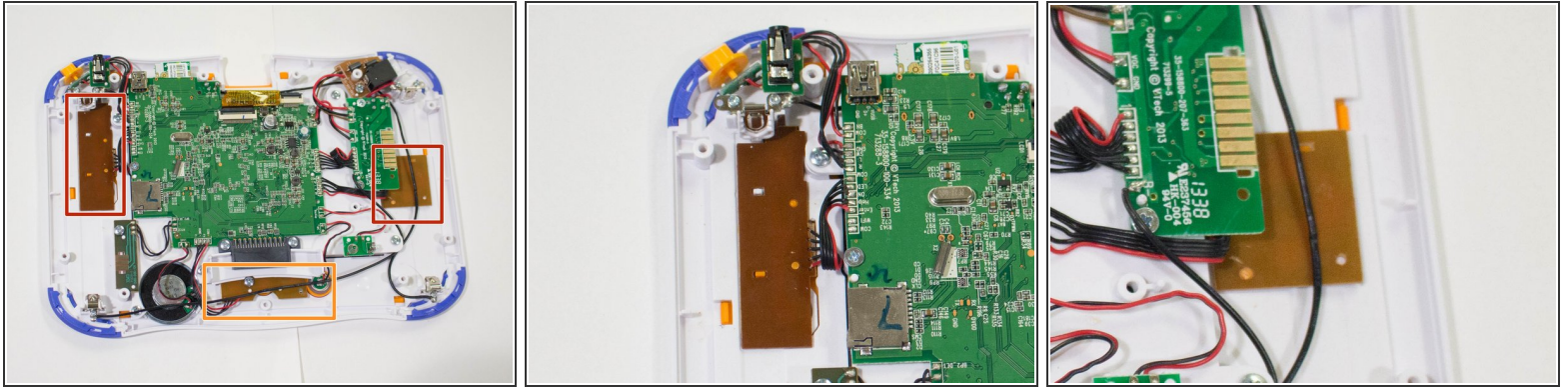


## Step 4



- Carefully remove the rear panel from the front panel of the device.
- ⓘ Once the rear panel is removed, you'll be able to see the motherboard and other components within the device.

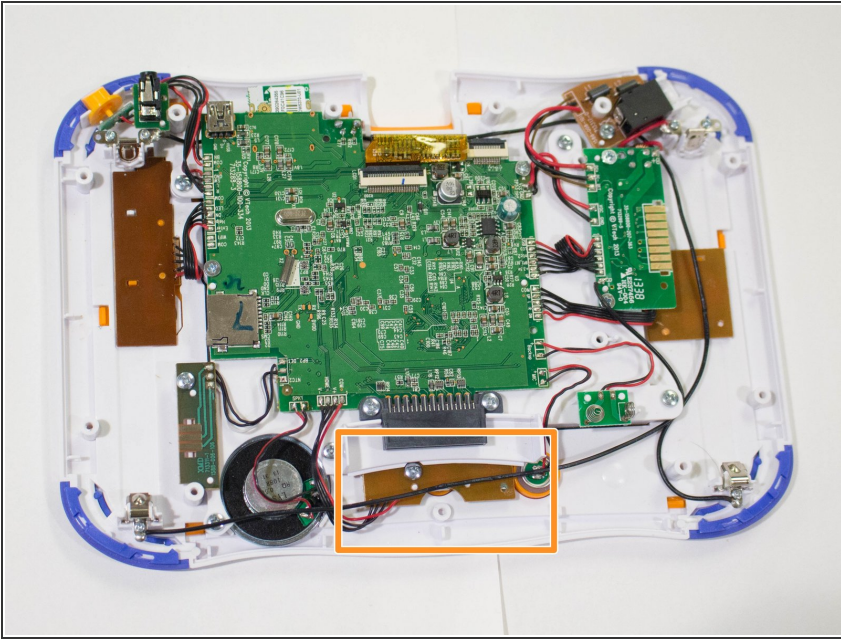
## Step 5 — Buttons



- i** The buttons on the InnoTab 3S are located in three areas. One on the left side of the tablet, one on the right side of the tablet, and one in the middle towards the bottom of the tablet.

  - Using a Spudger, gently lift the brown squares located on the left and right sides of the tablet to gain access to the buttons.
  - Replace the malfunctioning buttons and lower the brown squares back into place to secure the buttons to the device.
- i** Unlike the other two buttons, the buttons located in the middle towards the bottom of the device can not be accessed without further dismantling of the device.

## Step 6



- Remove the motherboard to access the lower buttons. To remove the motherboard please see our [Motherboard Guide](#)
- Now that the motherboard is removed, use a Spudger to gently lift the brown square at the bottom of the device.
- Replace the malfunctioning buttons and lower the brown square back into place to secure the buttons to the device.

To reassemble your device, follow these instructions in reverse order.