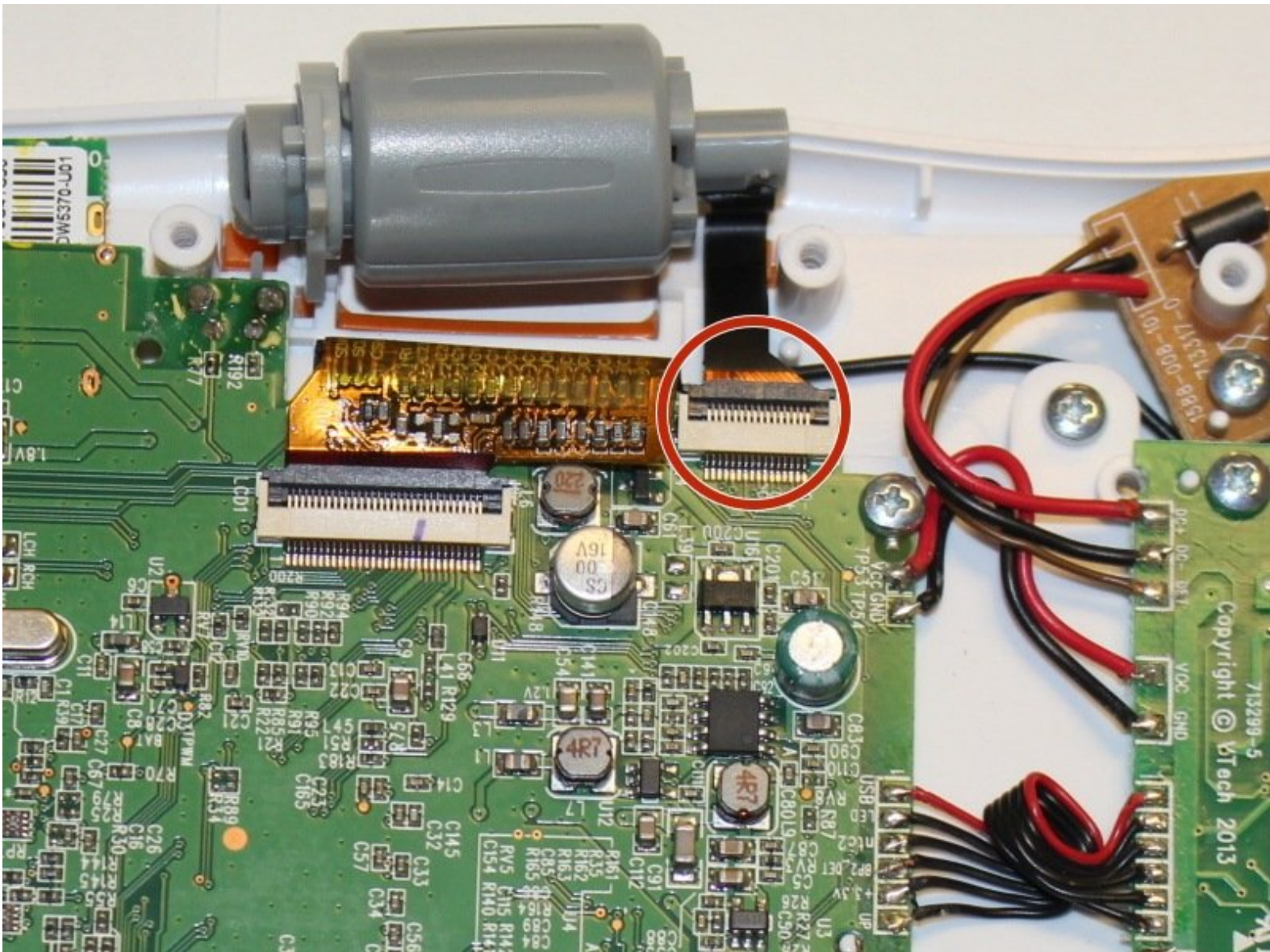




Vtech InnoTab 3S Camera Replacement

This guide contains information on how to properly replace the camera in the Vtech InnoTab 3S.

Written By: Karina Garcia



INTRODUCTION

Is the camera not working properly on your child's tablet? This guide will walk you through replacing the camera on the Vtech InnoTab 3S.



TOOLS:

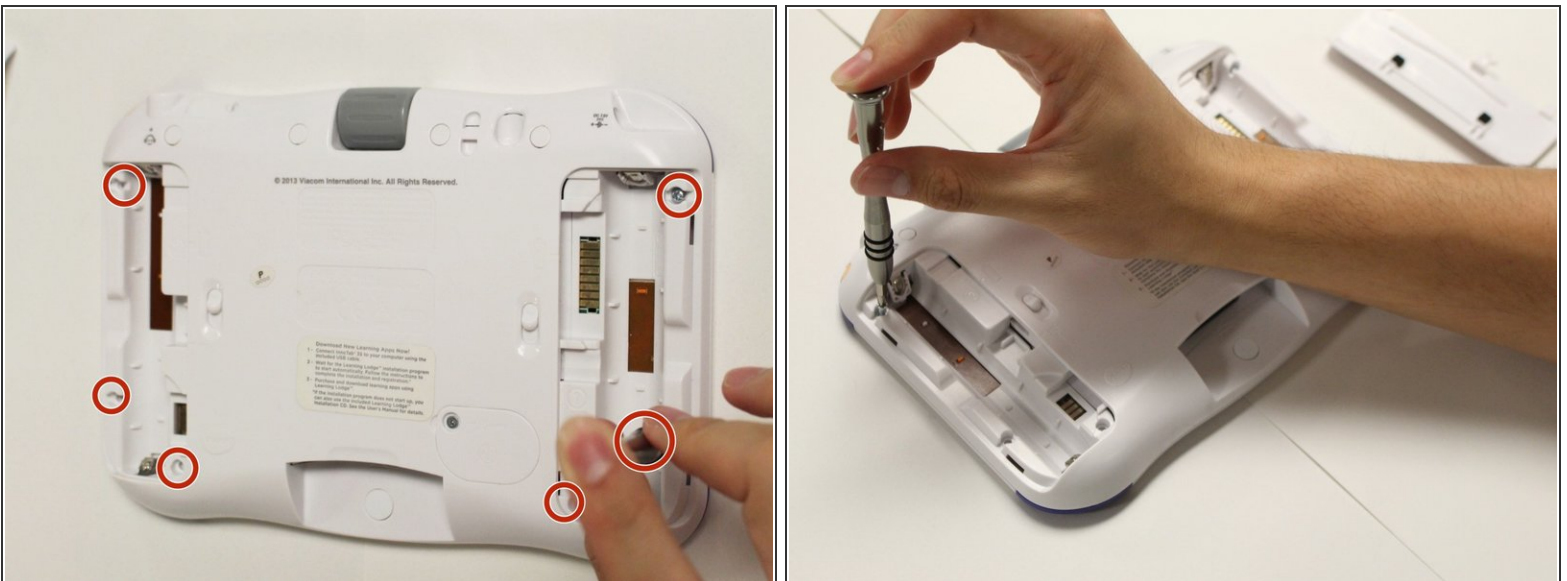
- [Metal Spudger](#) (1)
 - [Phillips #1 Screwdriver](#) (1)
-

Step 1 — Rear Panel



- i** The battery compartment locks are located at the right and left of the battery compartments on the back of the device.
- While holding the battery compartment locks down, slide the two battery doors outwards from the sides of the device.
 - Carefully remove the batteries from the battery compartment.
- i** The standard battery options for the InnoTab 3S is four AA batteries. Vtech also offers a rechargeable battery online. Both battery options are removed from the device in the same way.

Step 2



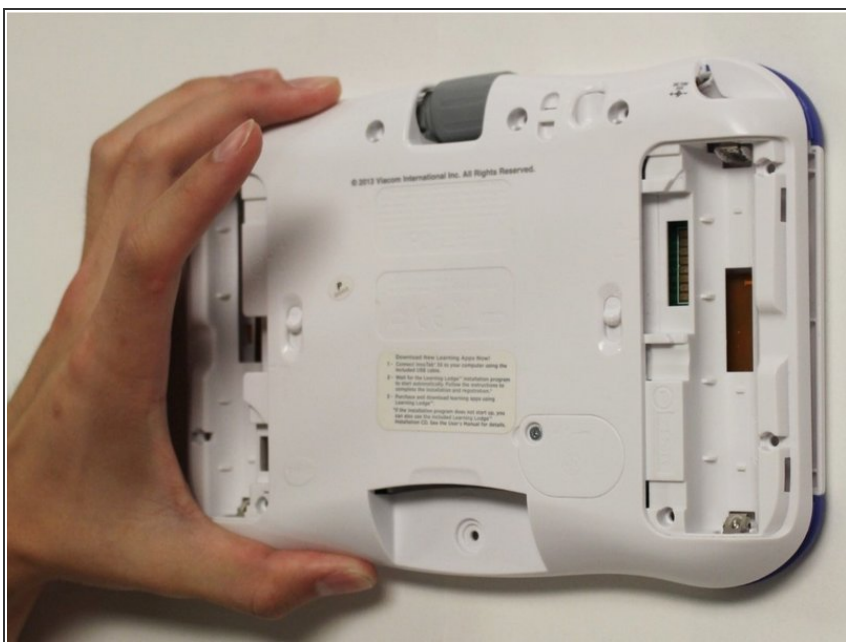
- Remove six 7 mm Phillips #1 screws from the interior of the battery compartment.

Step 3



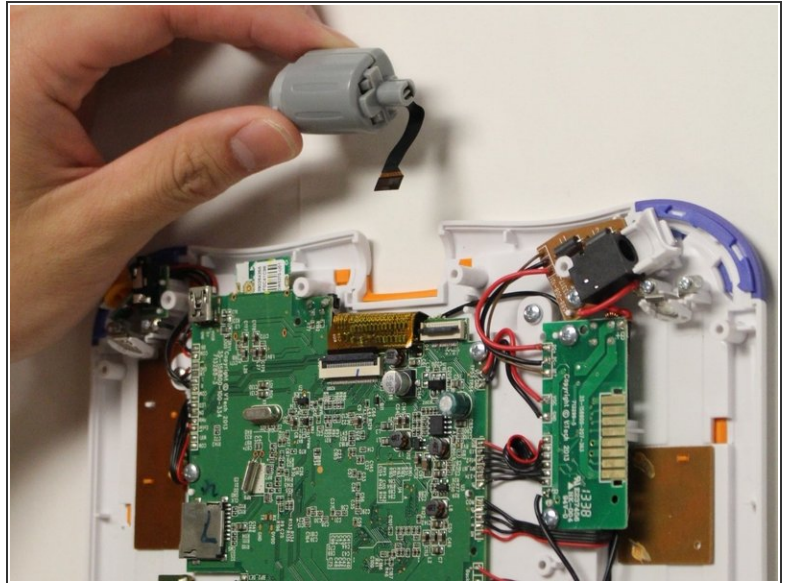
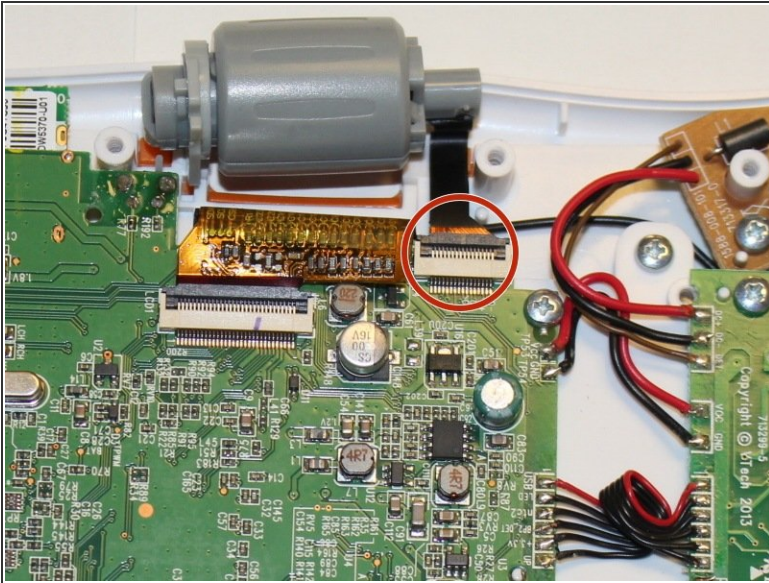
- ❗ There are 5 hidden 7mm screws on the back of the device. Four at the top of the device and one at the bottom. All are covered by a white cap.
- Using a nylon or metal spudger, remove the five caps that hide the screws.
- ⚠ Be careful not to scrape the plastic from the device using the spudger.
- ❗ When removing the caps, hold the spudger vertically compared to the orientation of the board to make removal easier. Also try to push in with your spudger pointing towards the bottom of the device.
- Remove the five 5mm Phillips #1 screws from the rear panel of the device.

Step 4



- Carefully remove the rear panel from the front panel of the device.
- ⓘ Once the rear panel is removed, you'll be able to see the motherboard and other components within the device.

Step 5 — Camera



- Using the tip of your finger, carefully pull the clip upwards to release the camera connection from the motherboard.
- ⓘ The connection between the motherboard and the camera is located at the near the top of the device.
- Remove the camera and the connecting wire from the the clip and attach the replacement cameras connection to the latch on the motherboard.
- Carefully lower the latch until you hear a click to secure the new camera to the device.
- ⚠ Pulling or tugging on the connection between the camera and the circuit board may cause damage to the connection.

To reassemble your device, follow these instructions in reverse order.