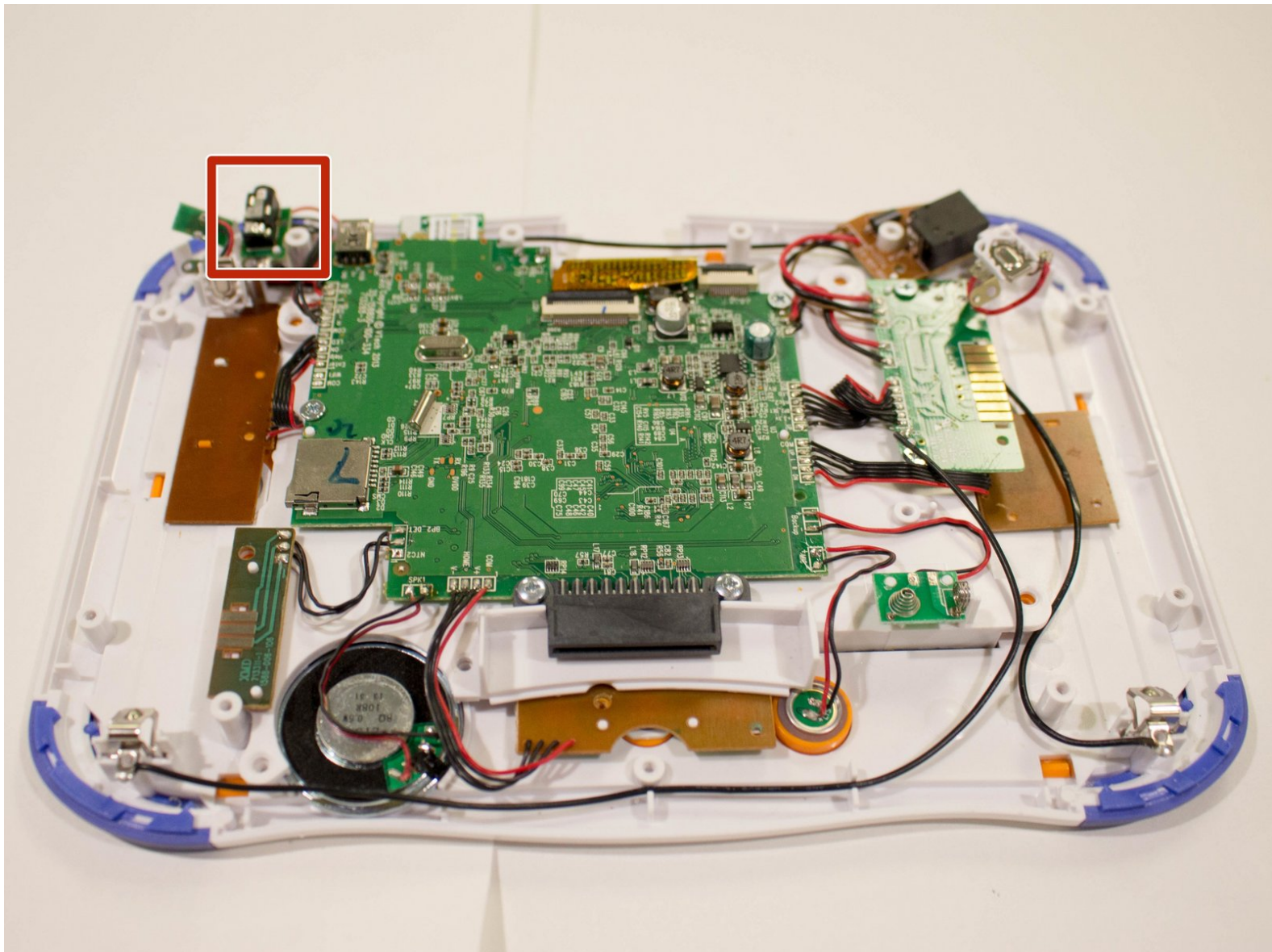




Vtech InnoTab 3S Headphone Port Replacement

This guide contains information on how to properly replace the headphone port on the Vtech InnoTab 3S.

Written By: Karina Garcia



INTRODUCTION



Headphones do not work when you plug them into the InnoTab? This guide will walk you through replacing the headphone port on your child's Vtech InnoTab 3S.

TOOLS:

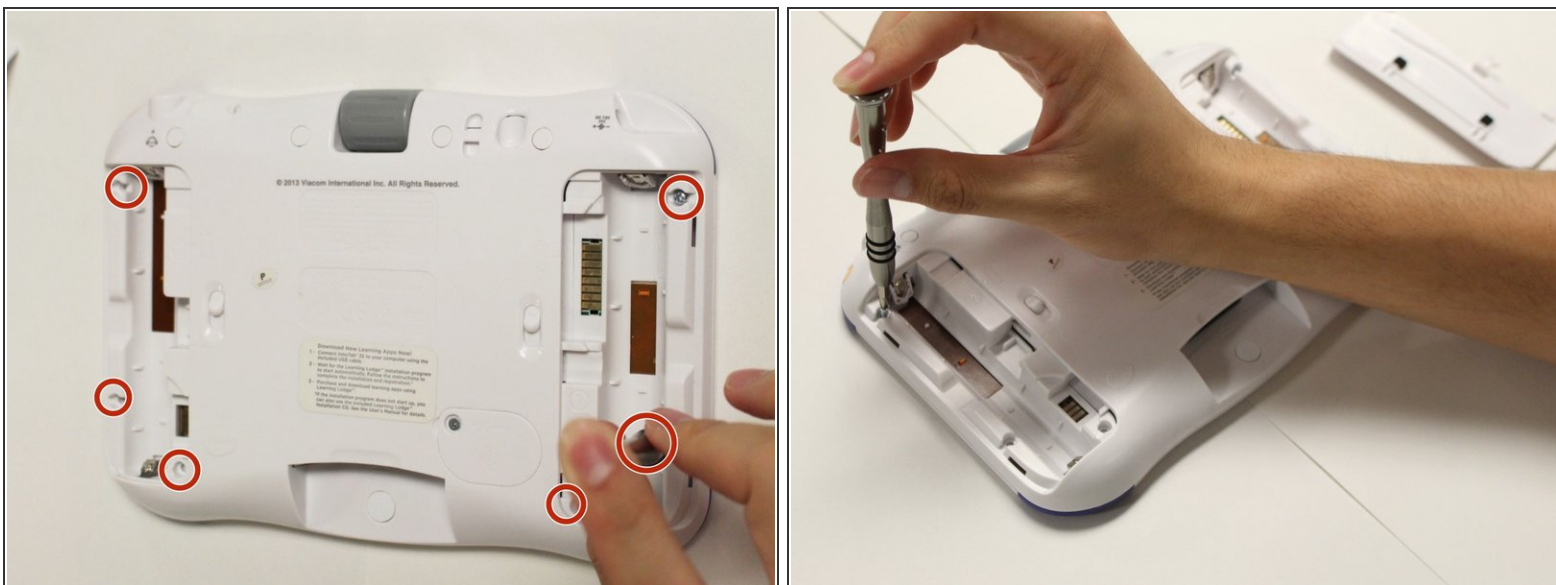
- [Metal Spudger](#) (1)
 - [Phillips #1 Screwdriver](#) (1)
 - [Tweezers](#) (1)
-

Step 1 — Rear Panel



-  The battery compartment locks are located at the right and left of the battery compartments on the back of the device.
- While holding the battery compartment locks down, slide the two battery doors outwards from the sides of the device.
- Carefully remove the batteries from the battery compartment.
-  The standard battery options for the InnoTab 3S is four AA batteries. Vtech also offers a rechargeable battery online. Both battery options are removed from the device in the same way.

Step 2



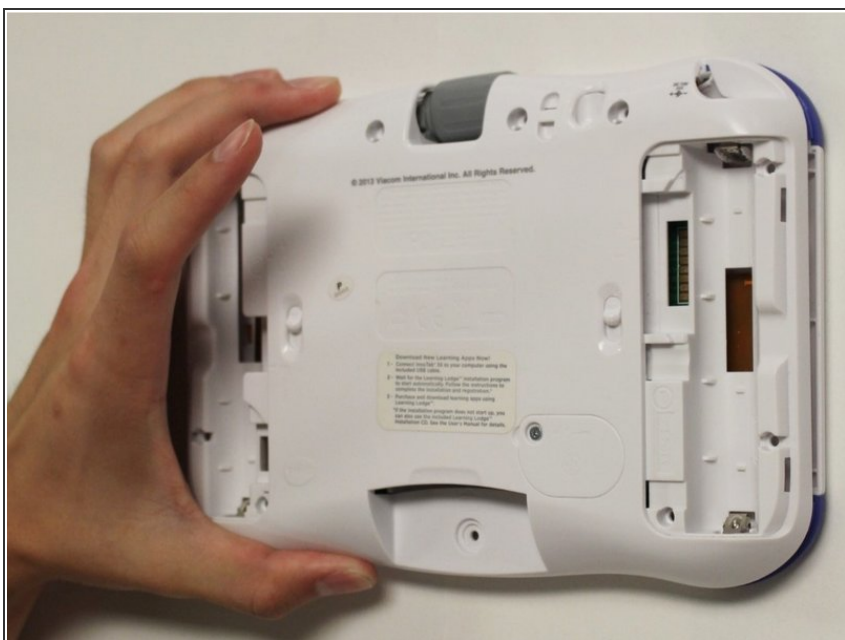
- Remove six 7 mm Phillips #1 screws from the interior of the battery compartment.

Step 3



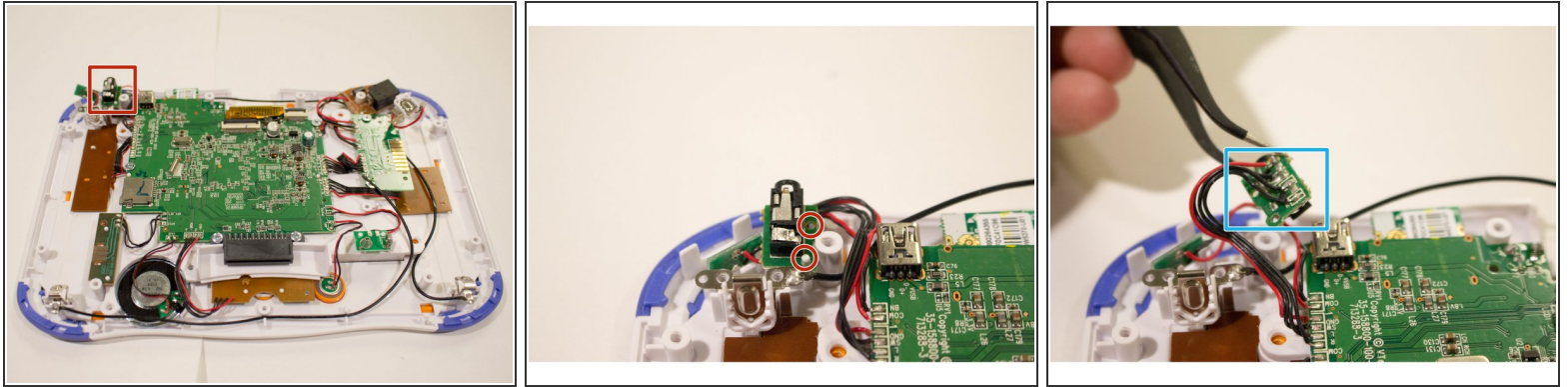
- ❗ There are 5 hidden 7mm screws on the back of the device. Four at the top of the device and one at the bottom. All are covered by a white cap.
- Using a nylon or metal spudger, remove the five caps that hide the screws.
- ⚠ Be careful not to scrape the plastic from the device using the spudger.
- ❗ When removing the caps, hold the spudger vertically compared to the orientation of the board to make removal easier. Also try to push in with your spudger pointing towards the bottom of the device.
- Remove the five 5mm Phillips #1 screws from the rear panel of the device.

Step 4



- Carefully remove the rear panel from the front panel of the device.
- ⓘ Once the rear panel is removed, you'll be able to see the motherboard and other components within the device.

Step 5 — Headphone Port



- ❗ The headphone port is located towards the top left side of the device.
- With tweezers remove the headphone port from its slot on the device.
 - ❗ The headphone port is fastened by two plastic poles. For easier removal lift the headphone port perpendicular to the device upwards.
- ⚠ Avoid damaging the plastic poles fastening the headphone port to the device. They are extremely fragile.
- Solder the wires securing the headphone port to the device.
 - ⚠ Avoid forceful movements when soldering to prevent damage to device components and personal injury.

To reassemble your device, follow these instructions in reverse order.