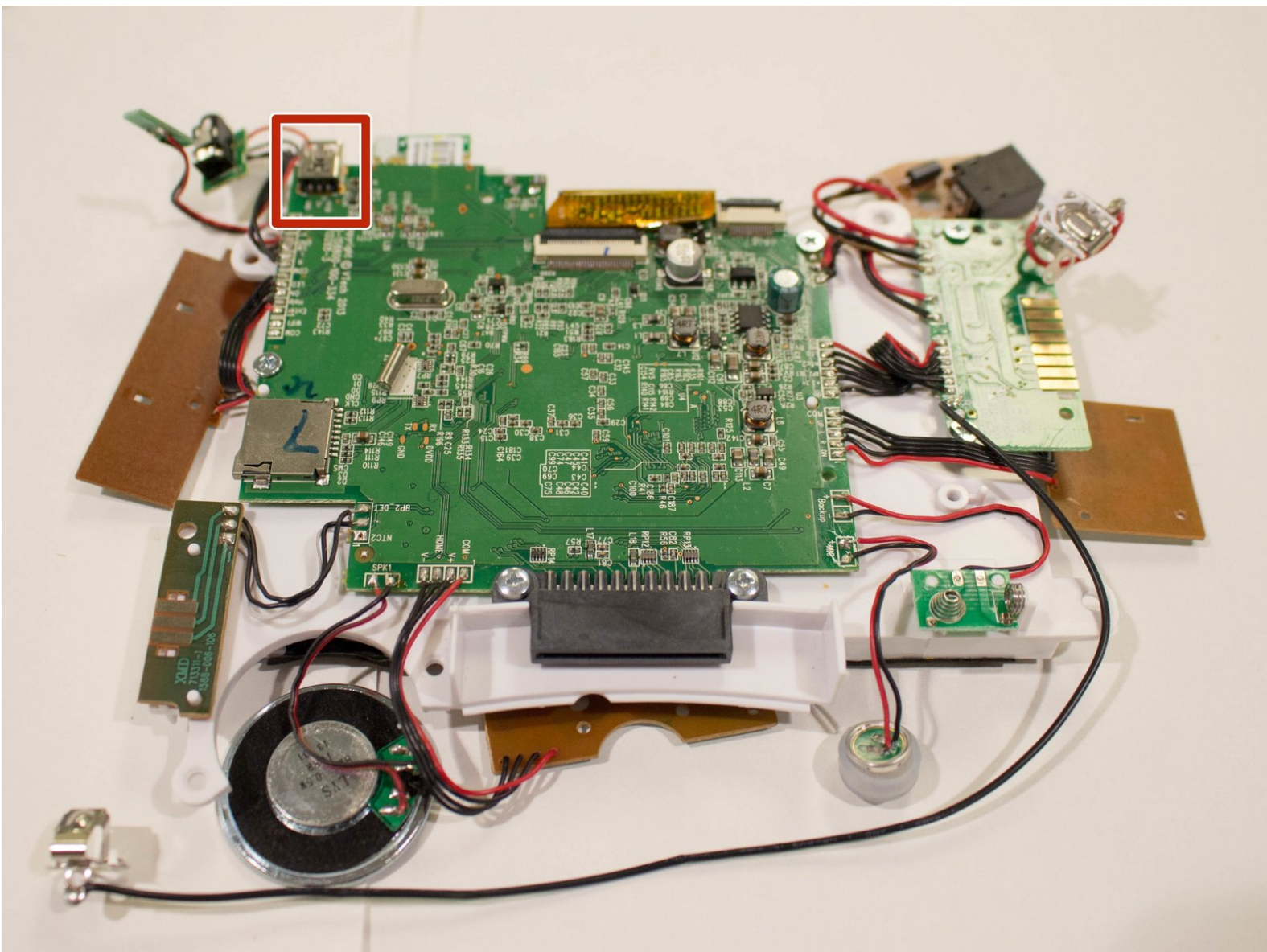




# Vtech InnoTab 3S USB Port Replacement

This guide contains instructions on how to safely locate and replace the USB port of the Vtech Innotab 3s.

Written By: taweewatchulikavit



# INTRODUCTION

This guide will walk you through replacing the USB port on your child's Vtech InnoTab 3S.

---

## TOOLS:

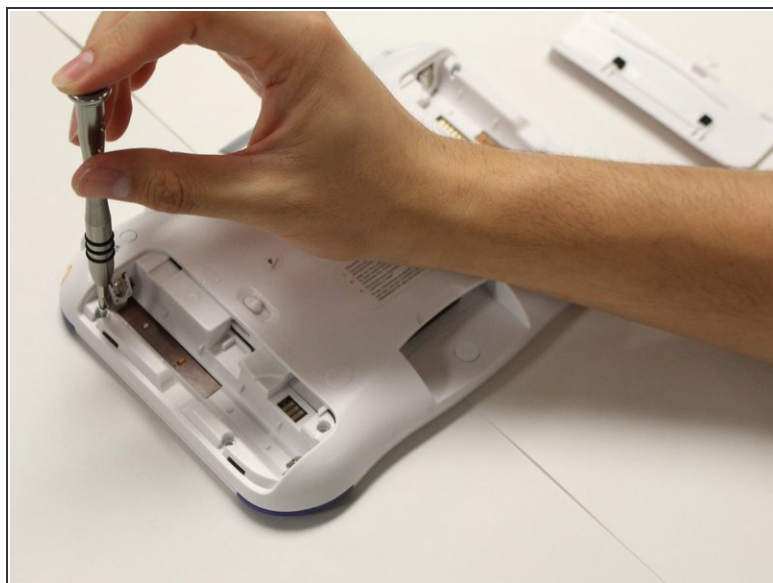
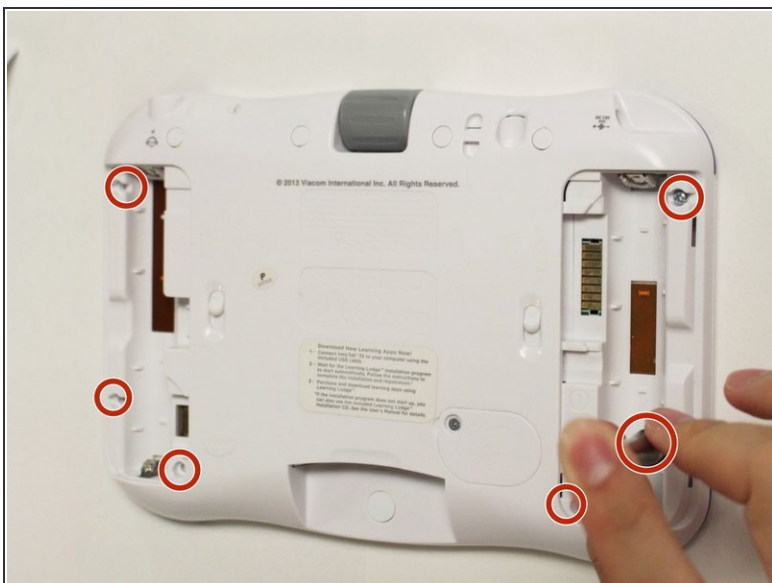
- [Solder](#) (1)
  - [Metal Spudger](#) (1)
  - [Phillips #1 Screwdriver](#) (1)
  - [Phillips #000 Screwdriver](#) (1)
  - [Tweezers](#) (1)
-

## Step 1 — Rear Panel



- i The battery compartment locks are located at the right and left of the battery compartments on the back of the device.
- While holding the battery compartment locks down, slide the two battery doors outwards from the sides of the device.
- Carefully remove the batteries from the battery compartment.
- i The standard battery options for the InnoTab 3S is four AA batteries. Vtech also offers a rechargeable battery online. Both battery options are removed from the device in the same way.

## Step 2



- Remove six 7 mm Phillips #1 screws from the interior of the battery compartment.

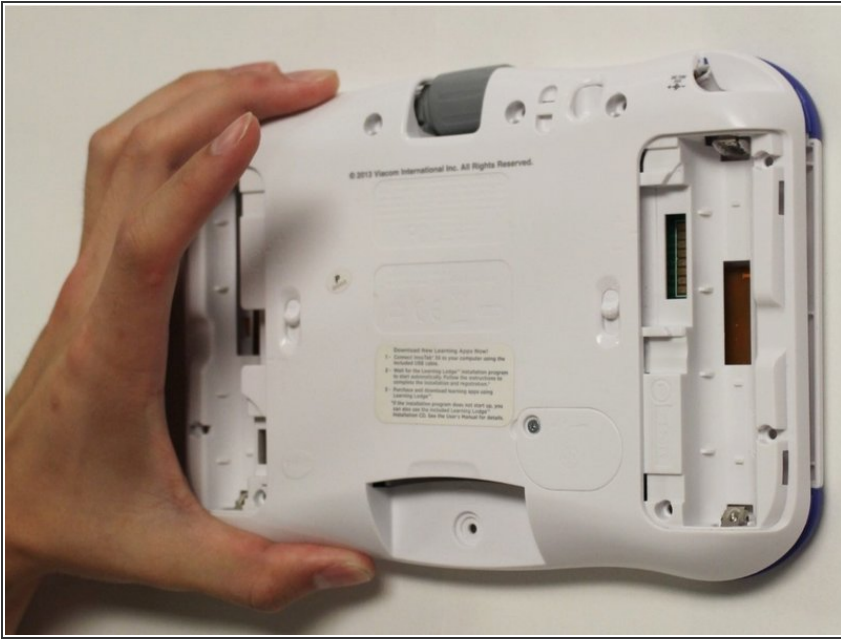
## Step 3



- ⓘ There are 5 hidden 7mm screws on the back of the device. Four at the top of the device and one at the bottom. All are covered by a white cap.
- Using a nylon or metal spudger, remove the five caps that hide the screws.
- ⚠ Be careful not to scrape the plastic from the device using the spudger.
- ⓘ When removing the caps, hold the spudger vertically compared to the orientation of the board to make removal easier. Also try to push in with your spudger pointing towards the bottom of the device.
- Remove the five 5mm Phillips #1 screws from the rear panel of the device.

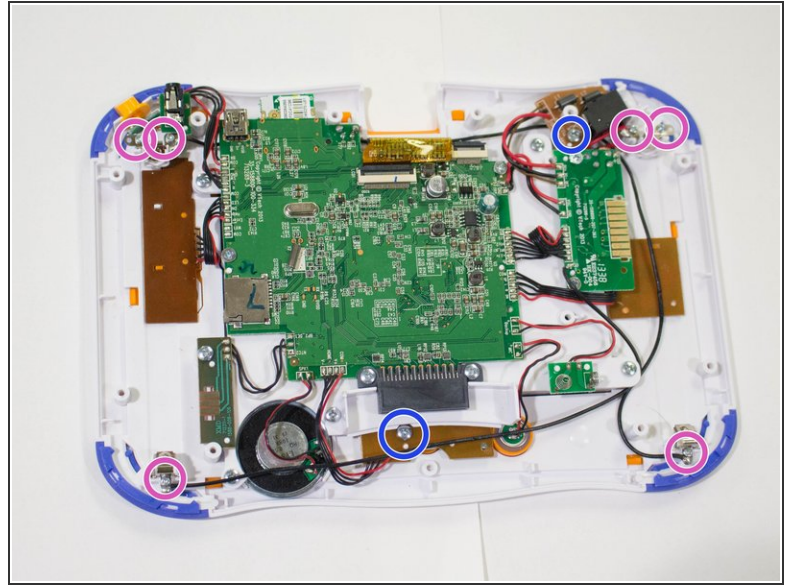
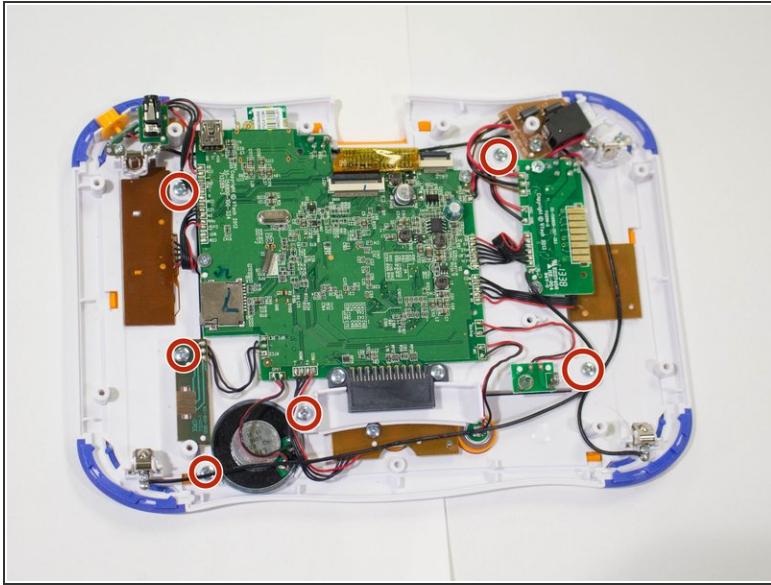



## Step 4



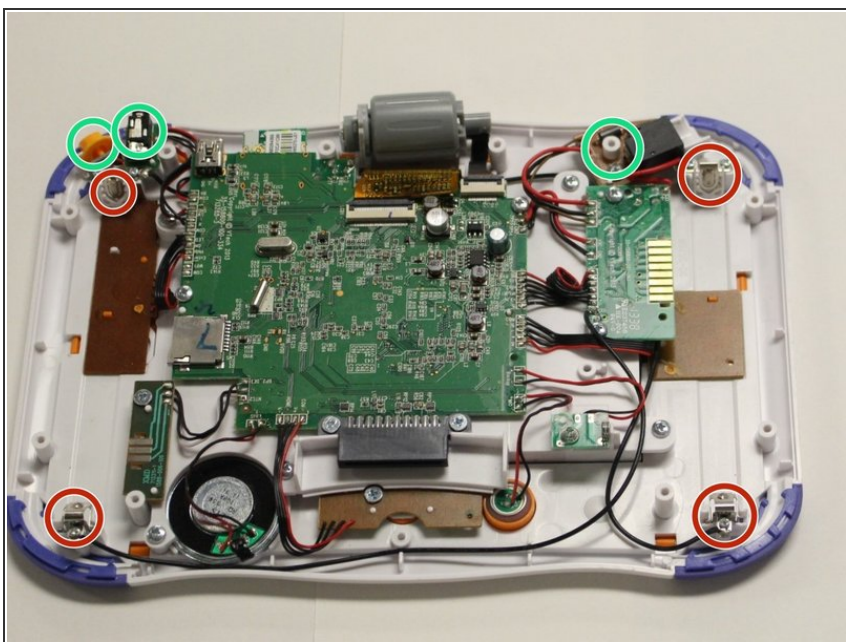
- Carefully remove the rear panel from the front panel of the device.
- ⓘ Once the rear panel is removed, you'll be able to see the motherboard and other components within the device.

## Step 5 — Motherboard



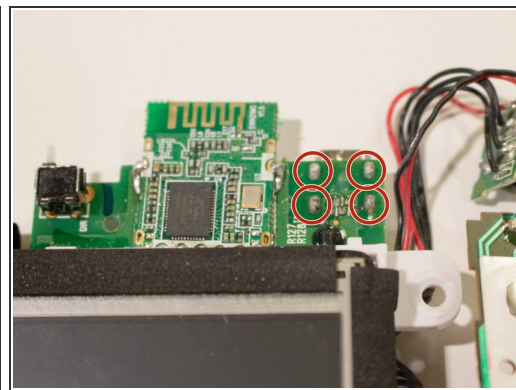
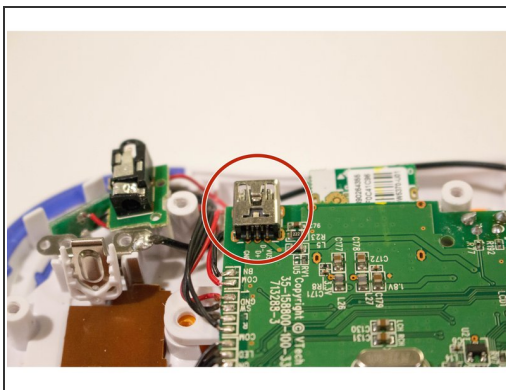
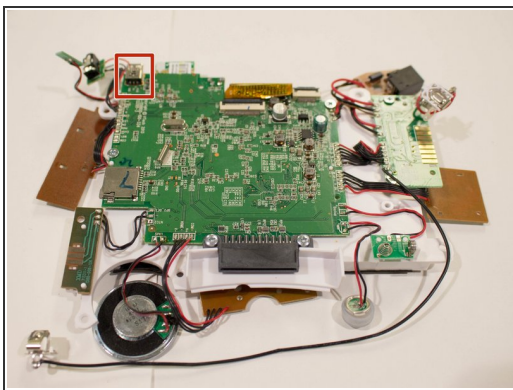
-  There are six 5mm screws securing the motherboard to the front panel of the device.
- Using a PH01 remove the screws that secure the motherboard to the front panel of the device.
  - Using the PH01 remove the 5mm screws securing the charger port and the buttons to the front panel.
  - Using the PH00 remove the six 3mm screws securing the battery clip.

## Step 6



- Using the tweezers remove the four battery clips at each corner of the device.
  - With the tweezers unsecure the charging port, headphone port and the light switch button from the front panel of the device.
  - Carefully lift the motherboard and device screen from the front panel of the device.
- ⚠ Avoid forceful movements when removing the motherboard to prevent damage of device components.

## Step 7 — USB Port



- i** The mini USB port is located near the top of the device and is secured by four metal prongs underneath the port.
- Facing the underside of the USB port, solder the metal prongs securing the USB port to the device.
- ⚠ Avoid forceful movements when soldering to prevent damage of device components and avoid personal injury.

To reassemble your device, follow these instructions in reverse order.