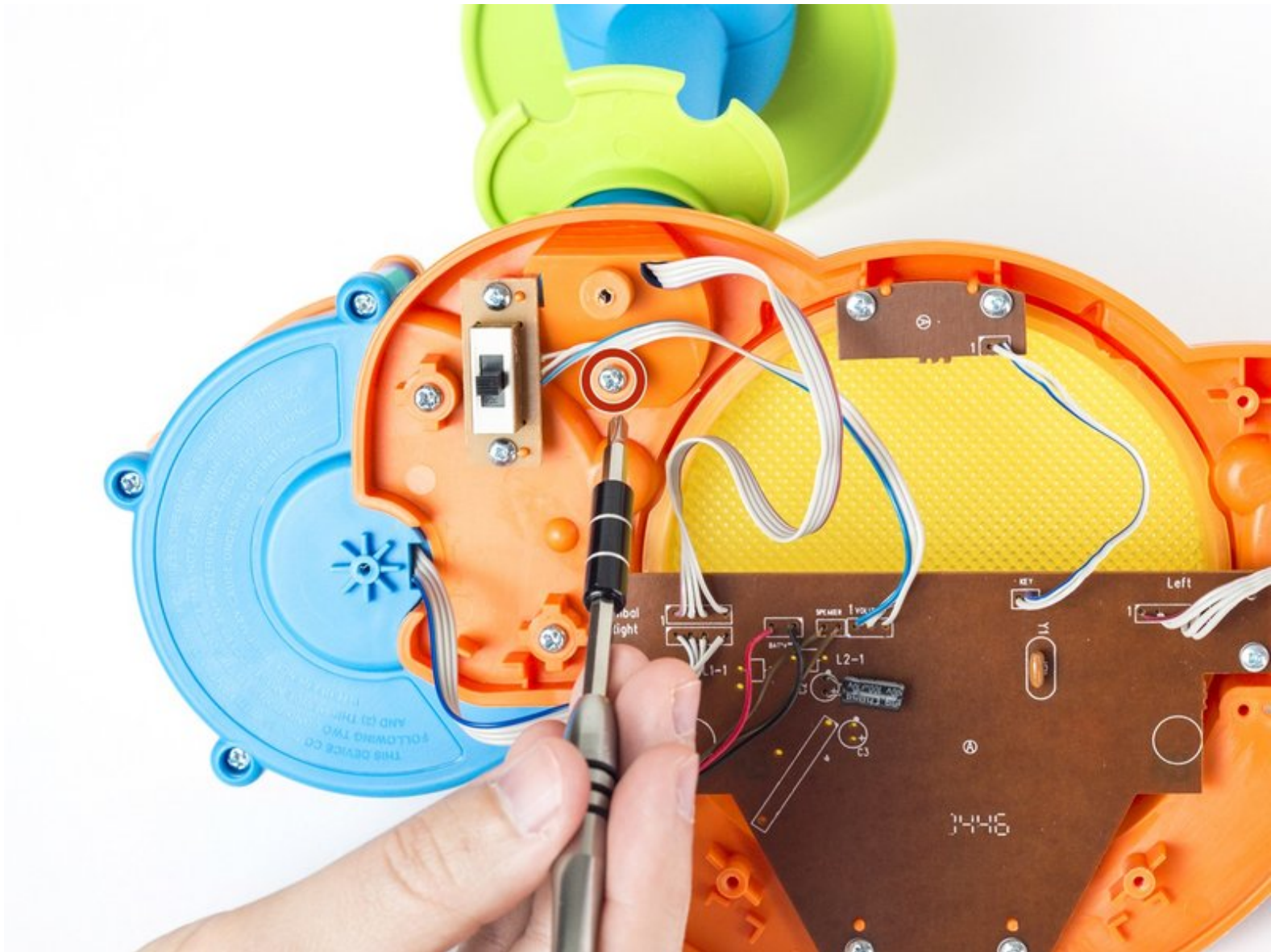




# Vtech Kidibeats Drum Set Green Cymbal Replacement

Replace the green cymbal in order to bring back proper safety and functionality to your drum set.

Written By: Aaron Klementowski



## INTRODUCTION

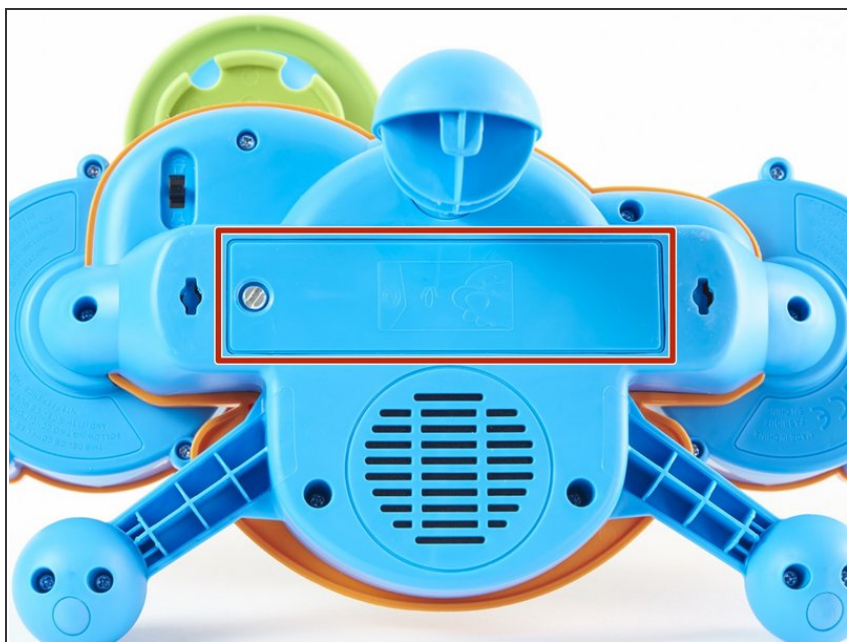
A broken or cracked cymbal can be very hazardous to small children. Additionally, a damaged cymbal could prevent the drum set from working properly. This guide is designed to show how to correctly replace the green cymbal in order restore your drum set to a safe and functioning condition.



### TOOLS:

- [Phillips #00 Screwdriver](#) (1)
  - [Phillips #2 Screwdriver](#) (1)
-

## Step 1 — Back Panel



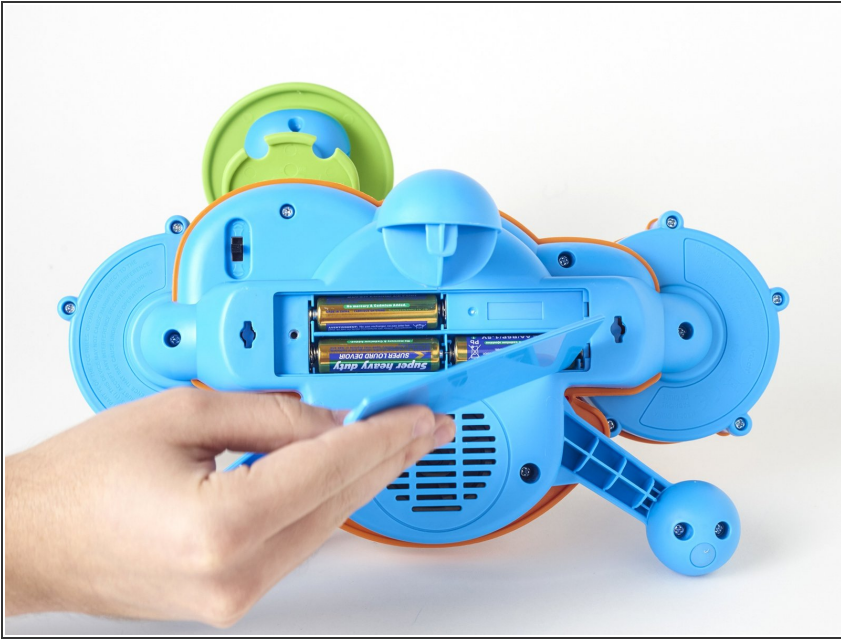
- Locate the battery panel that is centered between the three leg supports at the bottom of the drum set.

## Step 2



- To remove the battery panel, loosen the 10 mm panel screw using a flathead 4.0 screwdriver.
- ⓘ You can also use a small coin to loosen the screw.

### Step 3



- Using your fingers, pry open and remove the back battery panel.

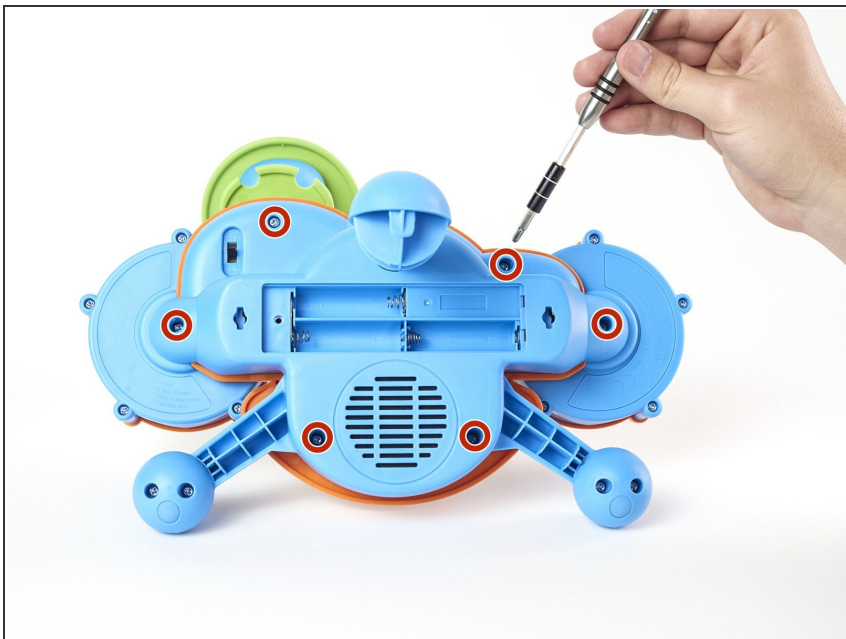
### Step 4



- Use your fingers to remove each battery from its housing.

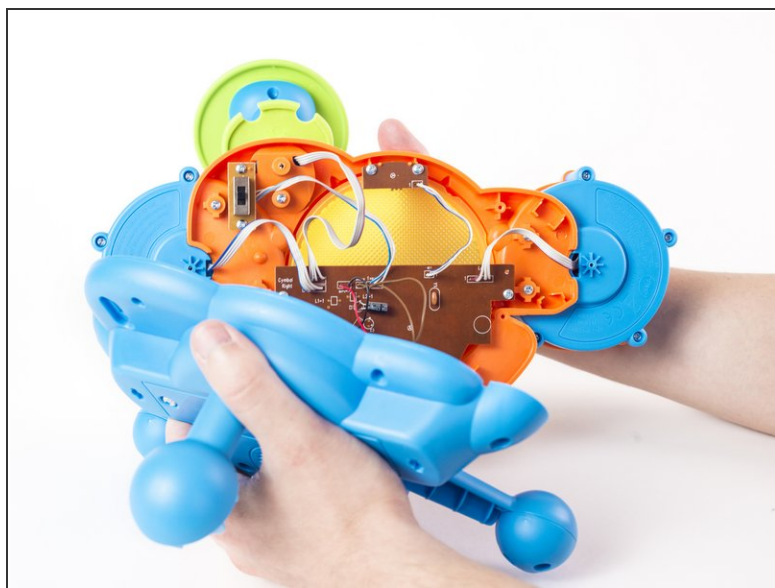


## Step 5




- Using a Phillips #2 screwdriver, loosen and remove the six 14 mm screws.

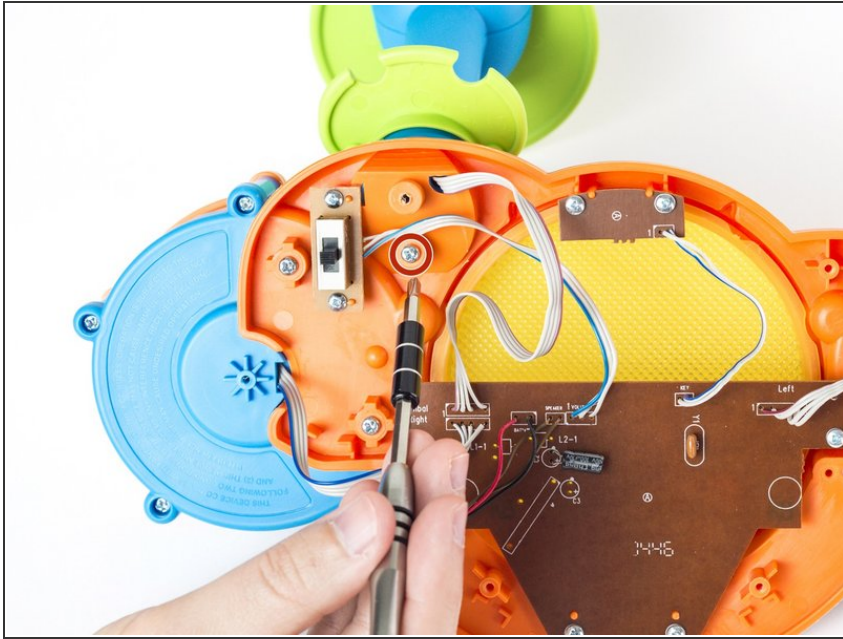
## Step 6



- With your hands, separate the bottom panel from the drum set.

 When removing the bottom panel, be careful not to pull too hard in order to prevent damaging the connections from the motherboard to the speaker and power source.

## Step 7 — Green Cymbal



- Use Phillips #2 screwdriver to loosen and remove the single 16 mm screw.

## Step 8



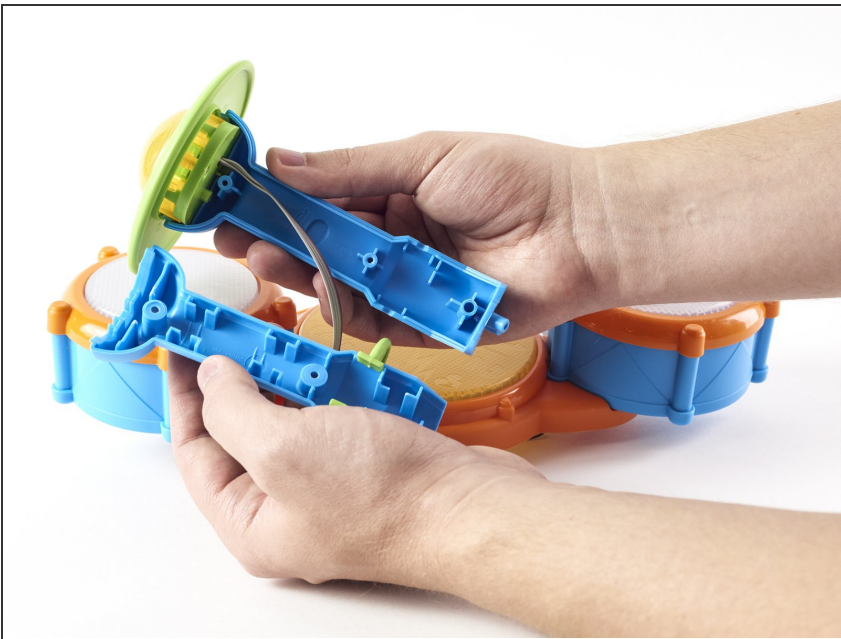
- Using your hands, remove the blue cymbal stand from the orange base.

## Step 9



- Loosen and remove the two 14 mm screws using a Phillips #2 screwdriver.

## Step 10



- Using your hands, separate the two halves of the blue cymbal stand.



## Step 11



- Using your hands, separate the green cymbal from the blue cymbal base.

## Step 12



- Using a Phillips #00 screwdriver, loosen and remove the three 12 mm screws located on the bottom of the green cymbal.



## Step 13



- Using your hands, separate the green cymbal from the green cymbal base.

## Step 14



- Using your hands, pull apart the green cymbal from the yellow light casing.

To reassemble your device, follow these instructions in reverse order.