



Vtech Kidibeats Drum Set Volume Switch Replacement

Replace your volume switch to restore sound to your drum set.

Written By: Aaron Klementowski



INTRODUCTION

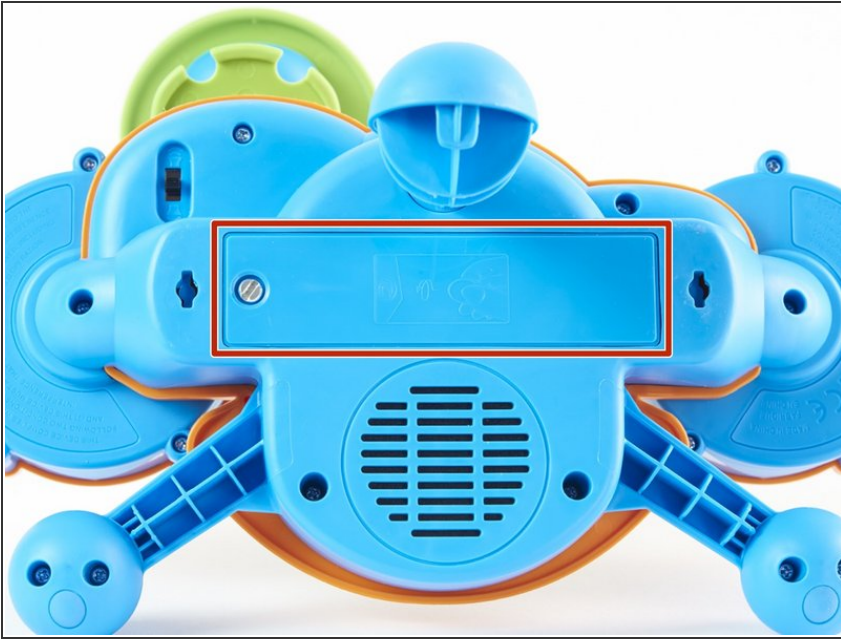
A faulty volume switch can often lead to distorted audio or even no audio at all. This guide is designed to show how to correctly replace the volume switch for your drum set in order to restore sound and proper function.



TOOLS:

- [Phillips #00 Screwdriver](#) (1)
 - [Phillips #2 Screwdriver](#) (1)
 - [Soldering Workstation](#) (1)
-

Step 1 — Back Panel



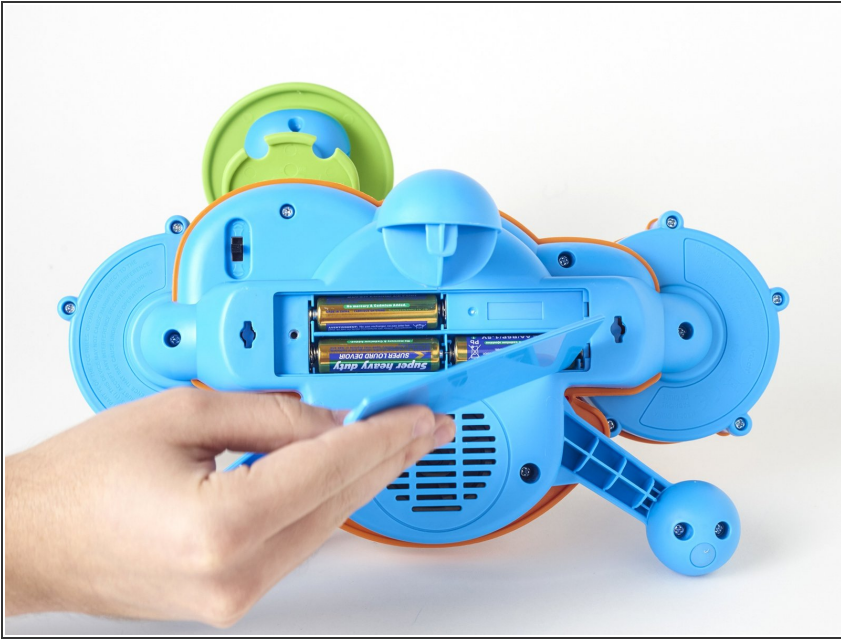
- Locate the battery panel that is centered between the three leg supports at the bottom of the drum set.

Step 2



- To remove the battery panel, loosen the 10 mm panel screw using a flathead 4.0 screwdriver.
- ⓘ You can also use a small coin to loosen the screw.

Step 3



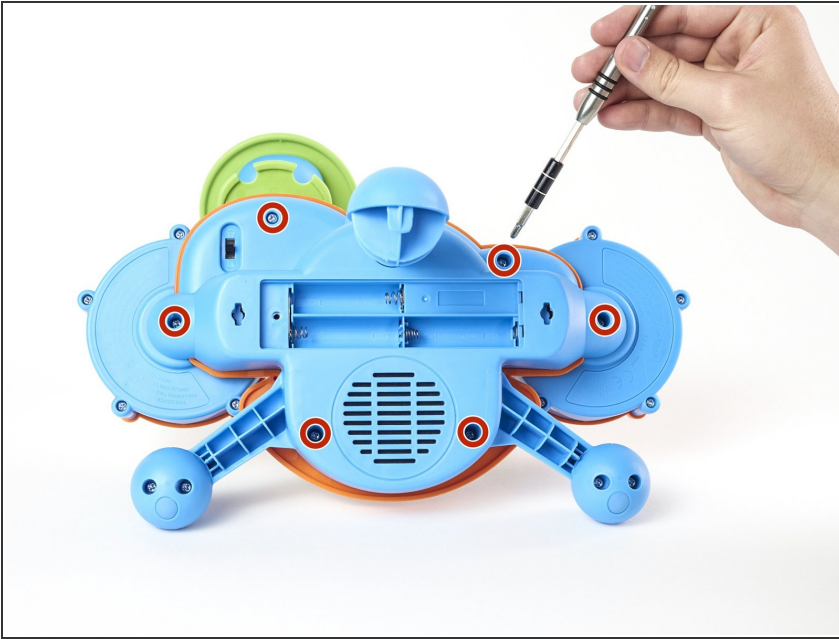
- Using your fingers, pry open and remove the back battery panel.

Step 4



- Use your fingers to remove each battery from its housing.

Step 5




- Using a Phillips #2 screwdriver, loosen and remove the six 14 mm screws.

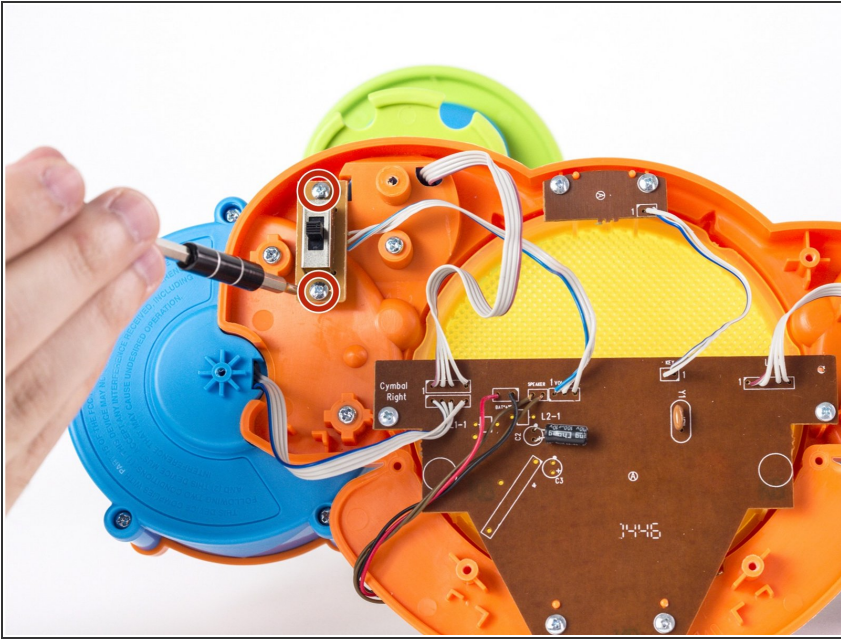
Step 6



- With your hands, separate the bottom panel from the drum set.

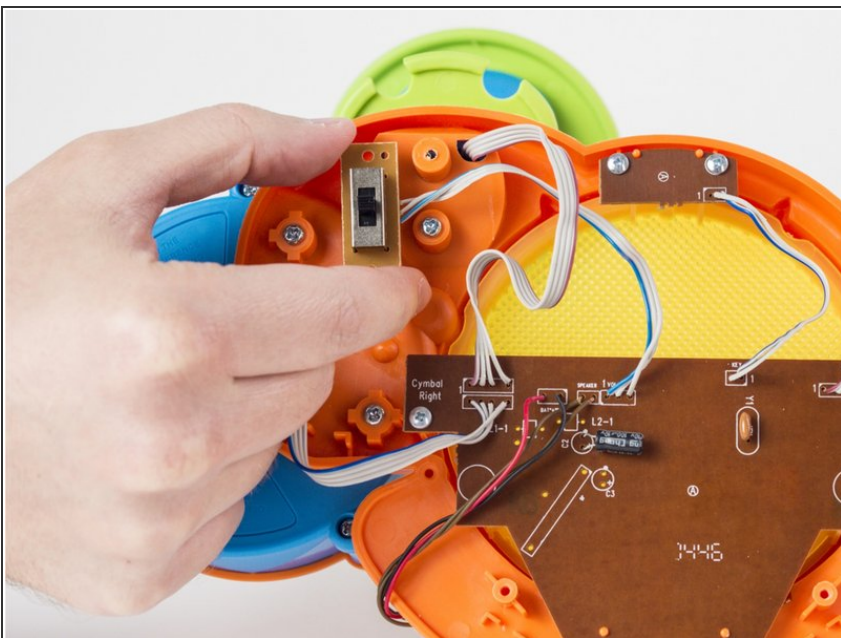
 When removing the bottom panel, be careful not to pull too hard in order to prevent damaging the connections from the motherboard to the speaker and power source.

Step 7 — Volume Switch



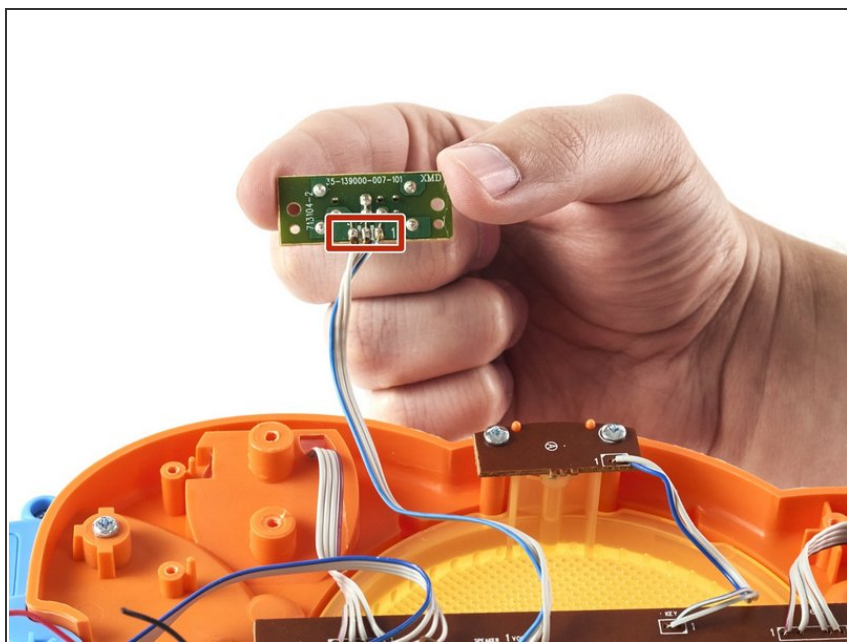
- Loosen and remove the two 8 mm screws using a Phillips #00 screwdriver.

Step 8



- Use your fingers to gently remove the volume switch from its setting.

Step 9



- Using a soldering kit, reheat the desolder connection points on the volume switch.
- ❗ To review soldering safety and techniques please visit [How To Solder and Desolder Connections](#).

To reassemble your device, follow these instructions in reverse order.