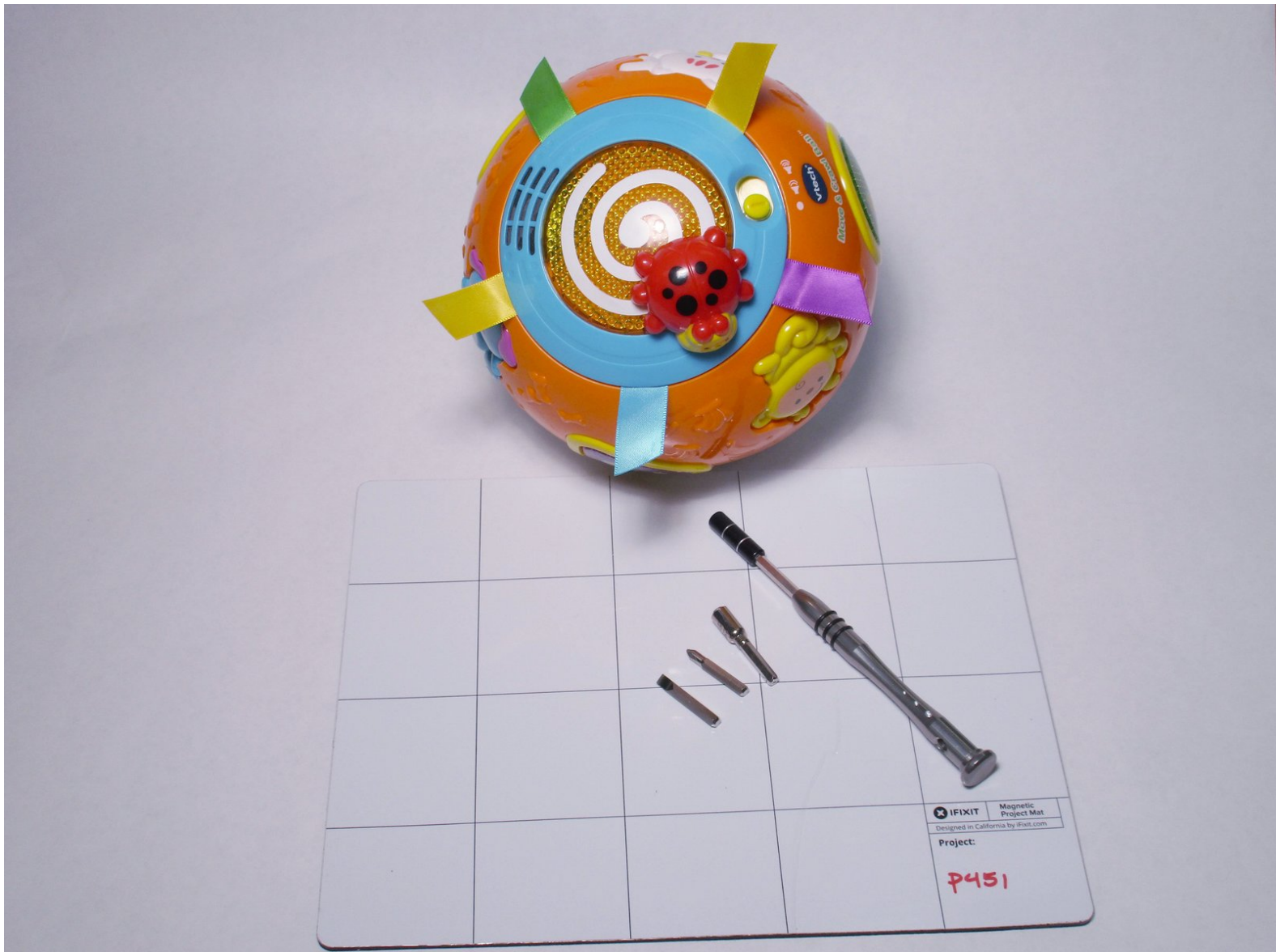




# Vtech Move and Crawl Ball Battery Replacement

This guide shows how to remove the cover and replace the batteries.

Written By: Taylor Smith



## INTRODUCTION

The main troubleshooting solution is to remove then reinstall the batteries, or replace dead batteries. This is also the first step in any other replacement for this toy.



### TOOLS:

- [Flathead Screwdriver](#) (1)



### PARTS:

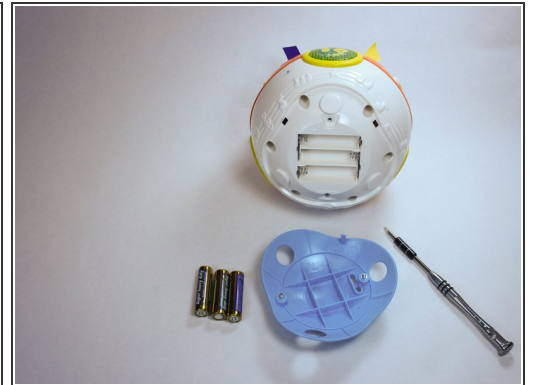
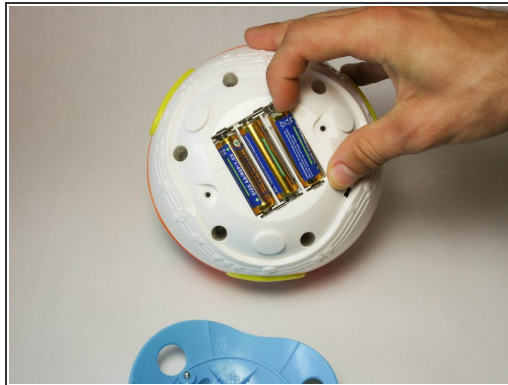
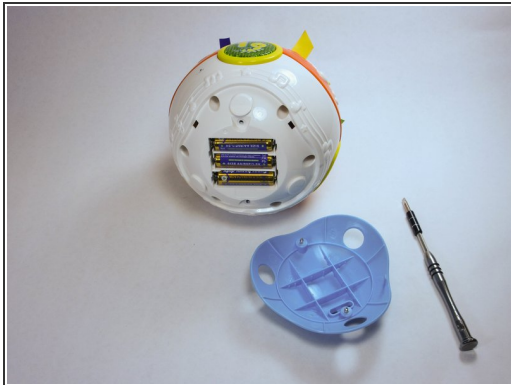
- [AA Batteries](#) (3)

## Step 1 — Battery



- There are two screws that require a 4.0mm flat head screwdriver. Twist them counter clockwise to remove. When you remove them they stay contained within the blue outer case.

## Step 2



- Pry the batteries out with your finger. When you replace them be sure to orient them correctly according to the markings in the slots. Match the plus symbol on the battery to the plus symbol in the slot.

To reassemble your device, follow these instructions in reverse order.