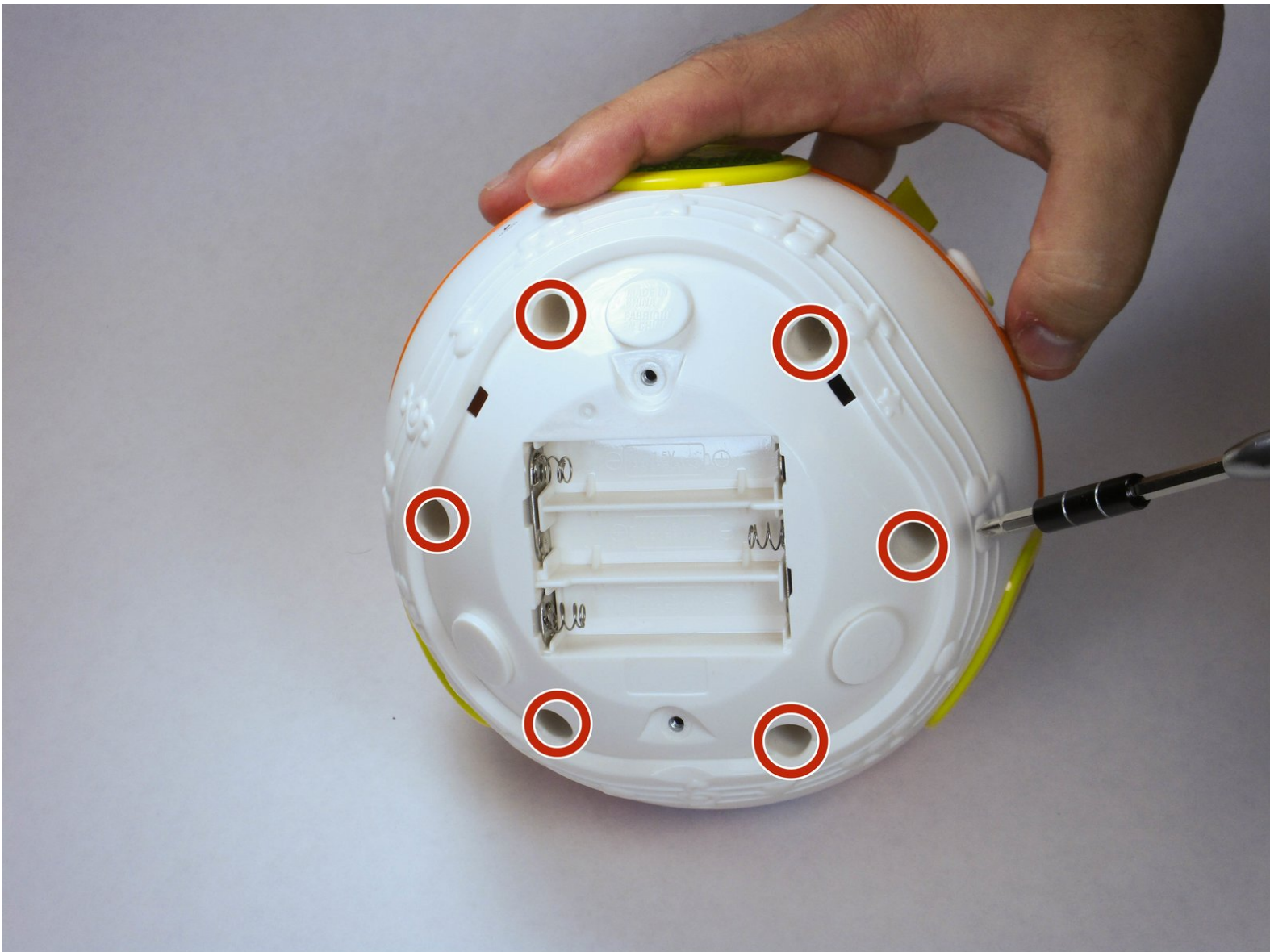




# Vtech Move and Crawl Ball Motor Replacement

This guide will help you through the process of replacing the motor in this device.

Written By: William Jones





## TOOLS:

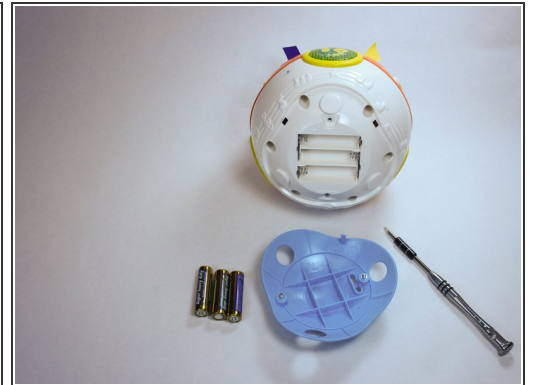
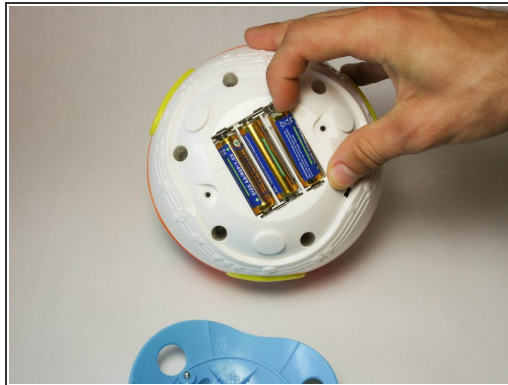
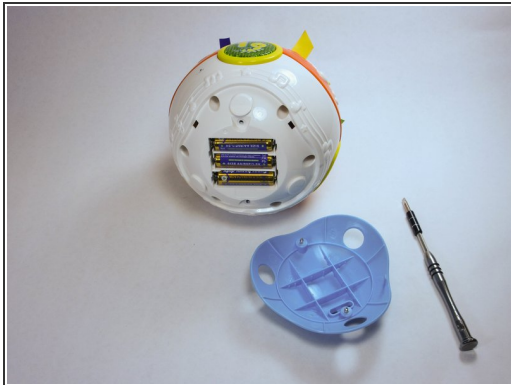
- [Flathead Screwdriver](#) (1)
  - [Soldering Iron](#) (1)
  - [Phillips #1 Screwdriver](#) (1)
-

## Step 1 — Battery



- There are two screws that require a 4.0mm flat head screwdriver. Twist them counter clockwise to remove. When you remove them they stay contained within the blue outer case.

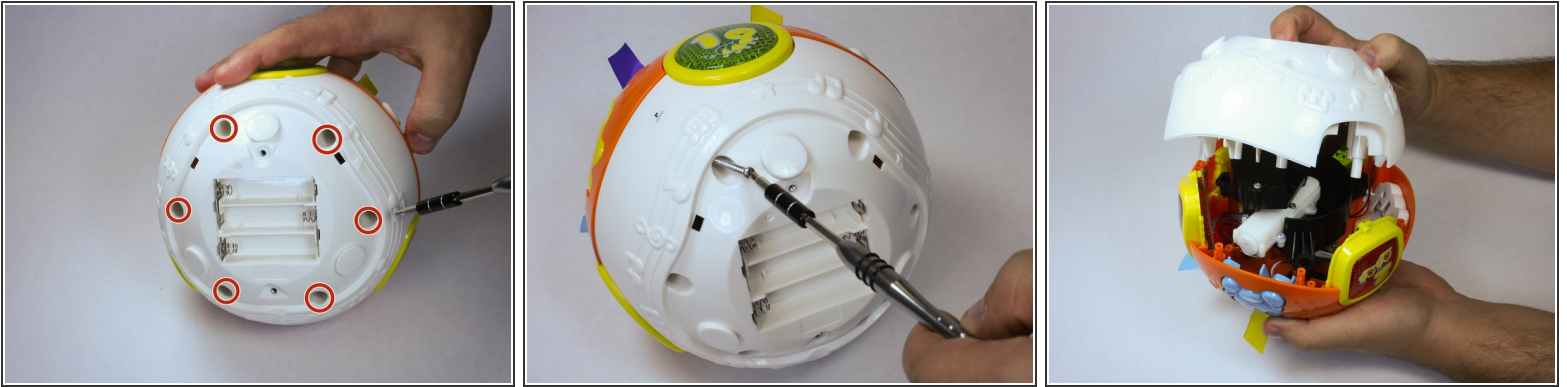
## Step 2



- Pry the batteries out with your finger. When you replace them be sure to orient them correctly according to the markings in the slots. Match the plus symbol on the battery to the plus symbol in the slot.

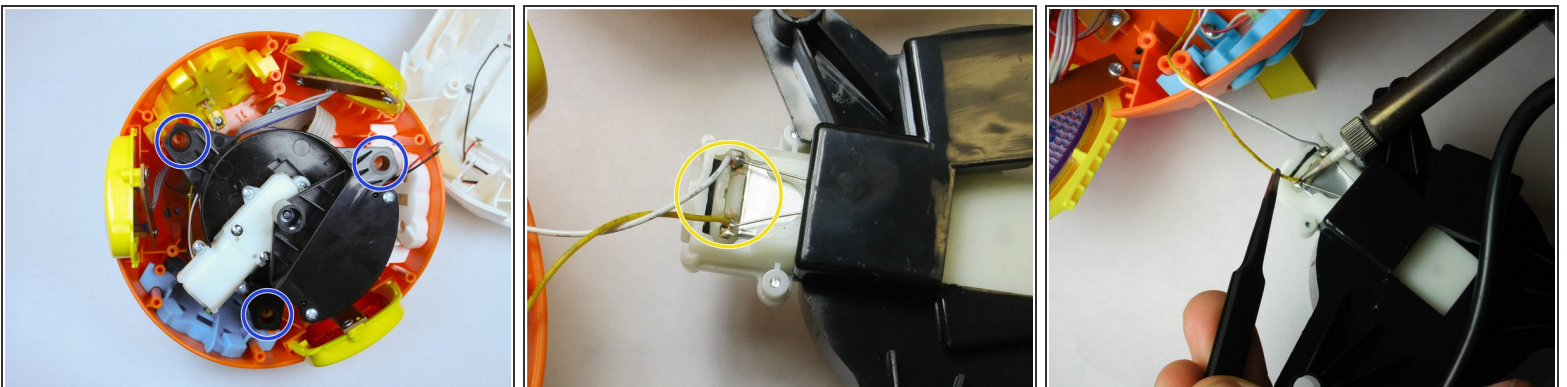


### Step 3 — Motor



- Remove 6 screws in order to pop off the outer shell and reach the inside components.

### Step 4



- Remove the motor by lifting it out of the shell, and find the attached wires at both ends: the circuit board and the motor itself. Use the soldering iron to remove the existing attachments by heating the solder joint with the solder iron tip while pulling on the wire.
- ⓘ Make sure the motor is aligned over the correct holes during reassembly.

To reassemble your device, follow these instructions in reverse order.