



Vtech Touch and Swipe Baby Phone Power Switch Replacement

The power switch may become sensitive or even unresponsive. This guide will show you how to realign the switch.

Written By: tellocordova





TOOLS:

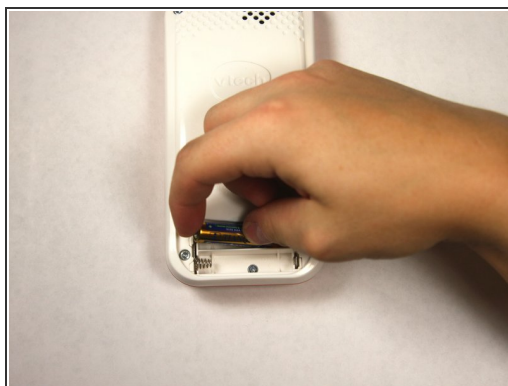
- [Phillips #1 Screwdriver](#) (1)
-

Step 1 — Battery



- Using a Phillips #1 screwdriver, remove the 4.8mm Phillips #1 screw on the battery cover by twisting the screwdriver counter-clockwise.

Step 2



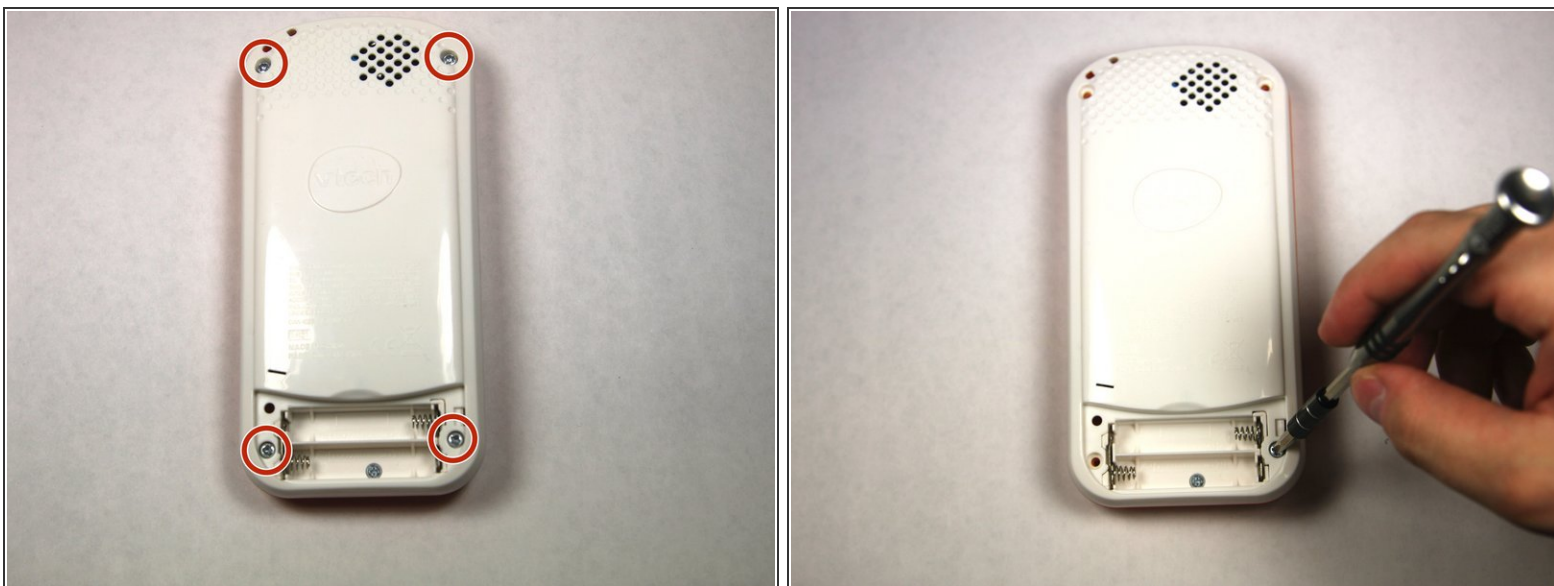
- Then simply remove the two AAA batteries by pulling on one end of the battery and lifting it straight out.

Step 3



- Take care when you want to close it. There is a notch.
- First you have to hook up that notch.
- Then firmly use a PH1 screwdriver to secure it.

Step 4 — Power Switch



- Remove 4 13.8mm screws holding the device back using a Phillips #1 screw driver.

Step 5



- Lift directly up to remove the switch and lay the wire down to the side.
- Once the switch has been taken out you can remove the switch's casing.

To reassemble your device, follow these instructions in reverse order.